


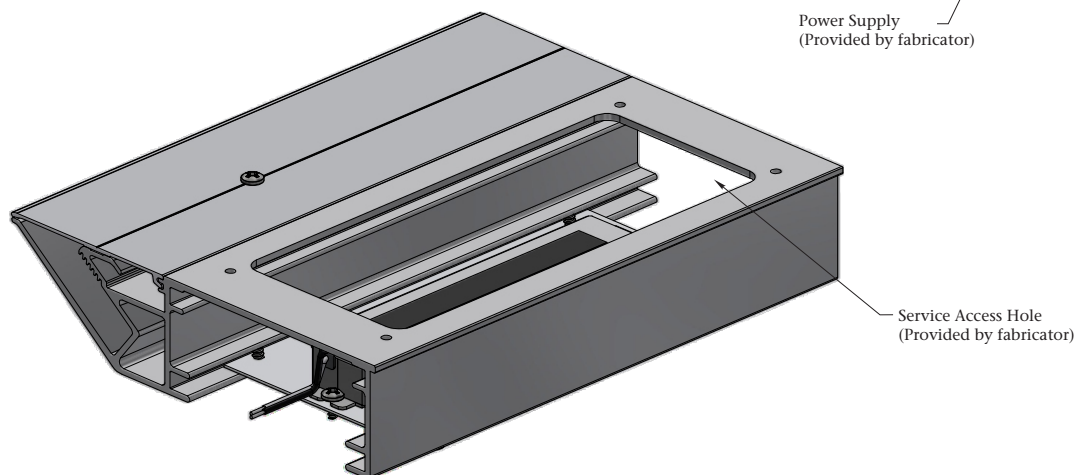
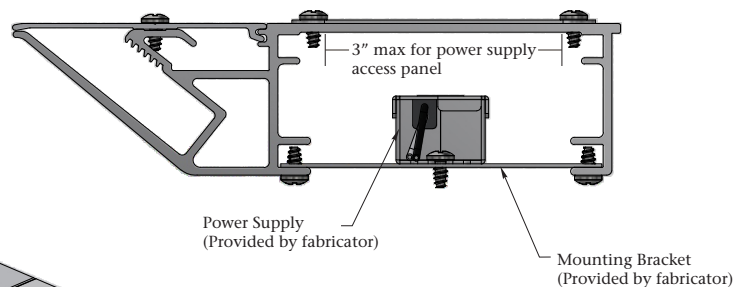
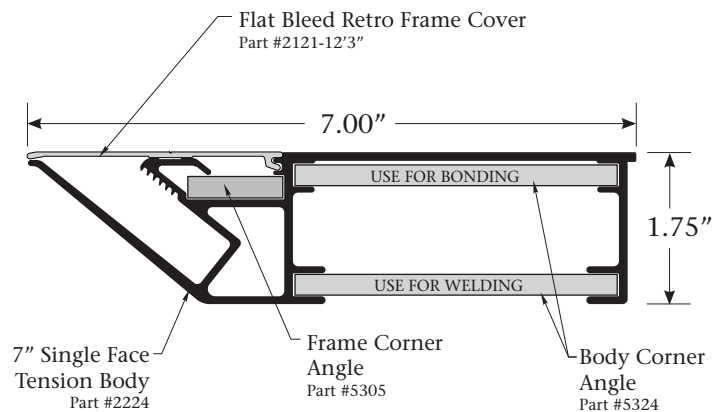


NEW PRODUCT UPDATE: 7" Single Face Tension Body

	Part Number	Part	Length	Finish
	2224	7" Single Face Tension Body	24'-6"	Mill
	2121-12'-3"	Flat Bleed Retro Frame Cover	12'-3"	Mill
	5324	7" Single Face Tension Body Corner Angle (3-11/16" x 1-3/4" x 1-3/4" x 1/4")		Mill

Features & Benefits

- 1 piece **body** and bleed tension **frame** combination
- Access panel can be fabricated to allow access to the power supply without servicing through the face
- Uses Flat Bleed Retro Frame Cover, Part #2121-12'3"
- Structurally designed and engineered to utilize gussets and back braces
- Can be **kerf** cut to create custom shapes
- Ideal for LED applications



Note: The 7" Single Face Tension Body requires Tension Tool, Part #5135