

2



1

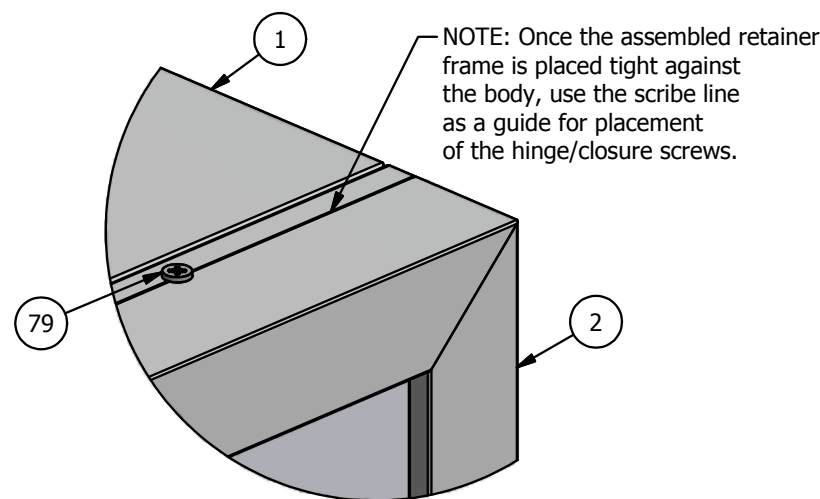
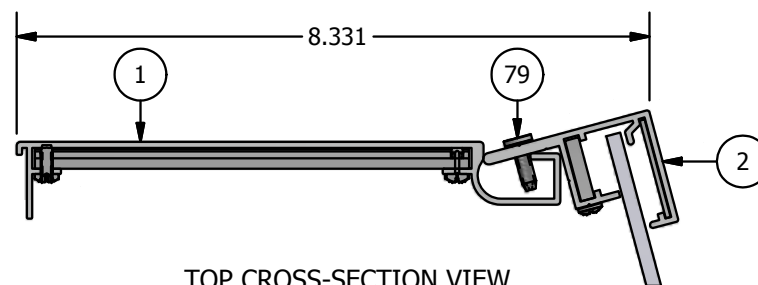
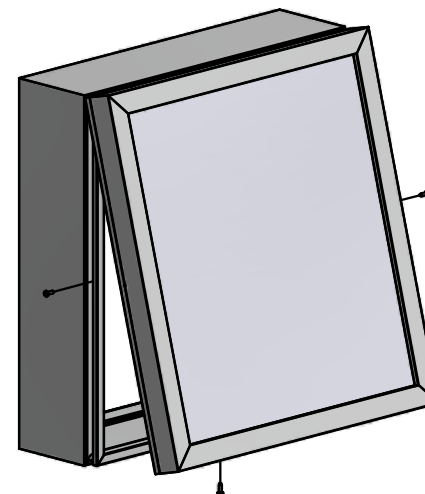
## PARTS LIST

ITEM	PART #	DESCRIPTION	NOTES
1	2027	Flat Single Face Body	Assembly
2	2052	Flat 1-1/2" Retainer	Assembly
79	5178	Hinge Screw - #10 x 5/8" pancake head	Pre-drill 5/32" pilot hole every 36" - Top only
80	5178	Closure Screw - #10 x 5/8" pancake head	Pre-drill 5/32" pilot hole every 48" - Sides & Bottom

**NOTE: PRE-CUT KITS ARE NOT PRE-DRILLED.**

(Holes shown in this drawing are for reference only.  
Drilling of pilot holes are to be done by fabricator.)

Ship To:  
Sales Order #



DETAIL A

THIS DRAWING WAS CREATED AT NO CHARGE TO ASSIST YOU IN VISUALIZING OUR PROPOSAL. THE DRAWING HEREIN IS THE PROPERTY OF SIGNCOMP. PERMISSION TO COPY OR REVISE THIS DRAWING OR TO USE THIS DRAWING FOR PRODUCTION IS STRICTLY PROHIBITED AND CAN ONLY BE COPIED, REVISED OR USED FOR PRODUCTION WITH THE EXPRESSED WRITTEN PERMISSION OF SIGNCOMP.

Part Name: Flat Single Face Body &amp; Flat 1-1/2" Retainer - Assembly

Part Number: K2027/2052

Date: 6/10/2015

Drawing By: SBreihof

Sheet: 1 of 1

Size: A

SignComp

B

B

A

A

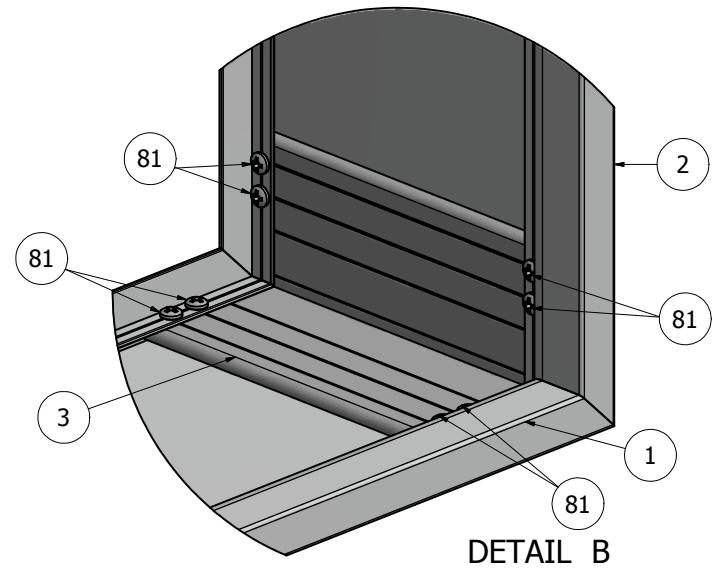
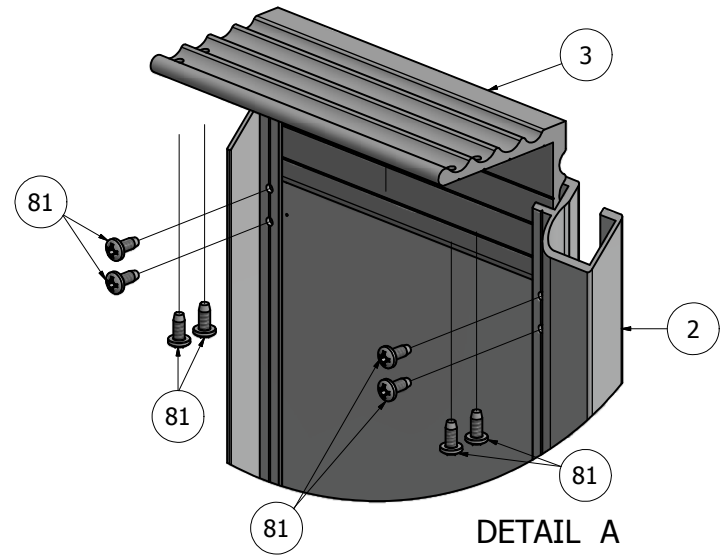
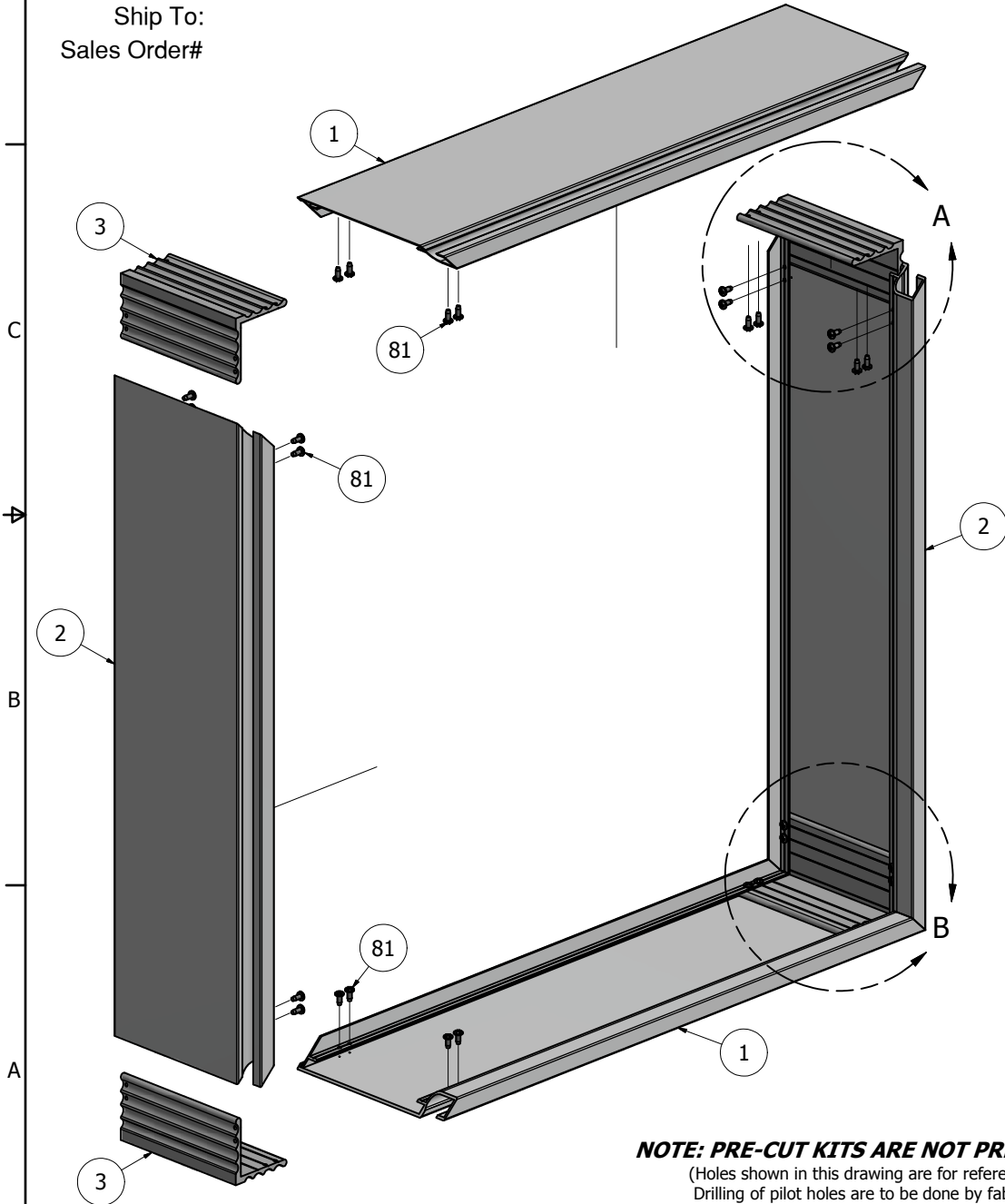
2



1

PARTS LIST			
ITEM	PART #	DESCRIPTION	NOTES
1	2027	Flat Single Face Body	Top & Bottom
2	2027	Flat Single Face Body	Sides
3	5327	Flat Single Face Body Corner Angle	One (1) per corner
81	5199	Flat Single Face Corner Angle Screw	Pre-drill 1/8" pilot hole

Ship To:  
Sales Order#



**NOTE: PRE-CUT KITS ARE NOT PRE-DRILLED.**  
(Holes shown in this drawing are for reference only.  
Drilling of pilot holes are to be done by fabricator.)

THIS DRAWING WAS CREATED AT NO CHARGE TO ASSIST YOU IN VISUALIZING OUR PROPOSAL. THE DRAWING HEREIN IS THE PROPERTY OF SIGNCOMP. PERMISSION TO COPY OR REVISE THIS DRAWING OR TO USE THIS DRAWING FOR PRODUCTION IS STRICTLY PROHIBITED AND CAN ONLY BE COPIED, REVISED OR USED FOR PRODUCTION WITH THE EXPRESSED WRITTEN PERMISSION OF SIGNCOMP.

DRAWING BY:	SBreihof	8/14/2013	<b>SignComp</b>	
Centroid X:	0.000 in	TITLE		
Centroid Y:	0.000 in	Flat Single Face Body - Assembly		
Principal Moments Ix:	0.000 in <sup>4</sup>	PART NO		
Principal Moments Iy:	0.000 in <sup>4</sup>	Section Modulus Ix:	0.000 in <sup>3</sup>	REV
Section Modulus Iy:	0.000 in <sup>3</sup>	Section Modulus Iy:	0.000 in <sup>3</sup>	<b>K2027</b>
SHEET 1 OF 1				

2



1

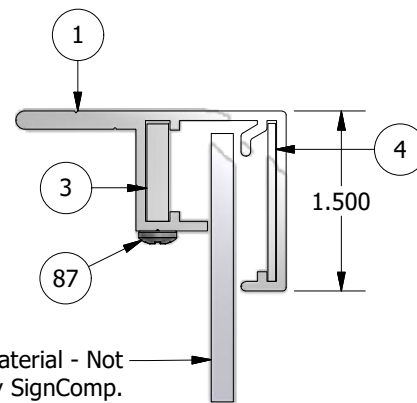
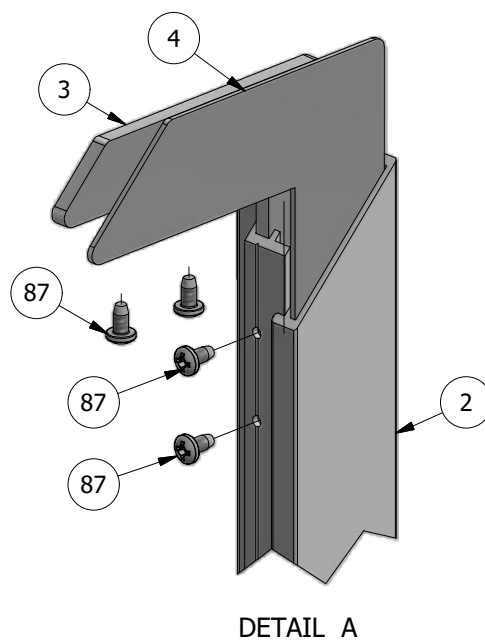
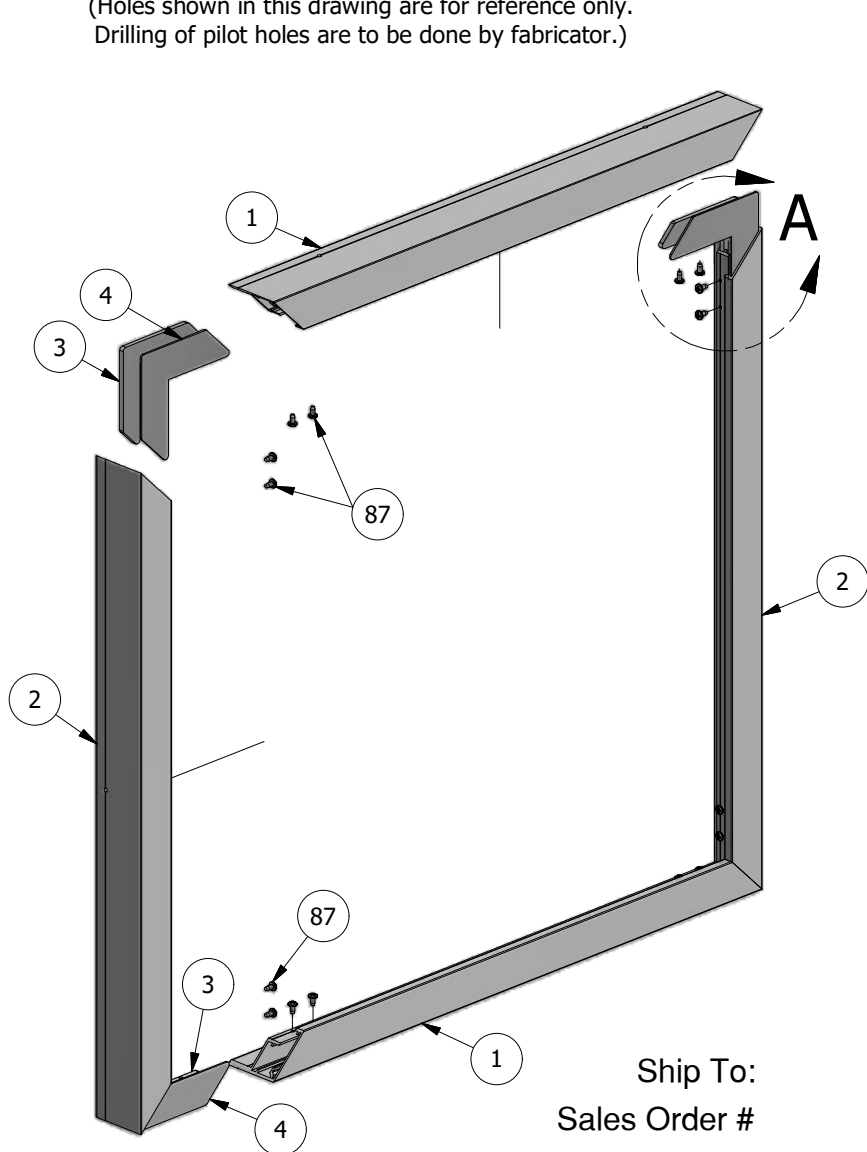
## PARTS LIST

ITEM	PART #	DESCRIPTION	NOTES
1	2052	Flat 1-1/2" Retainer	Top & Bottom
2	2052	Flat 1-1/2" Retainer	Sides
3	5213	Flat 1-1/2" Frame Corner Bracket	
4	5213	Flat 1-1/2" Frame Corner Key	
87	5195	Flat Frame Corner Bracket Screw	#8 x 5/16" - Pre-drill 1/8" holes Four(4) per corner

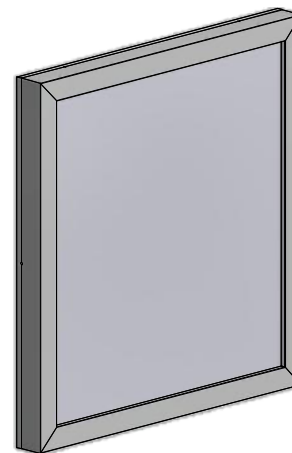
### NOTE: PRE-CUT KITS ARE NOT PRE-DRILLED.

(Holes shown in this drawing are for reference only.  
Drilling of pilot holes are to be done by fabricator.)

B



CROSS-SECTION VIEW



B

A

THIS DRAWING WAS CREATED AT NO CHARGE TO ASSIST YOU IN VISUALIZING OUR PROPOSAL. THE DRAWING HEREIN IS THE PROPERTY OF SIGNCOMP. PERMISSION TO COPY OR REVISE THIS DRAWING OR TO USE THIS DRAWING FOR PRODUCTION IS STRICTLY PROHIBITED AND CAN ONLY BE COPIED, REVISED OR USED FOR PRODUCTION WITH THE EXPRESSED WRITTEN PERMISSION OF SIGNCOMP.

Part Name: Flat 1-1/2" Retainer

Part Number: 2052

Revision:

Date: 5/22/2015

Drawing By: SBreihof

Sheet: 1 of 1

Size: A

# SignComp

2



1

Ship To:  
Sales Order #