

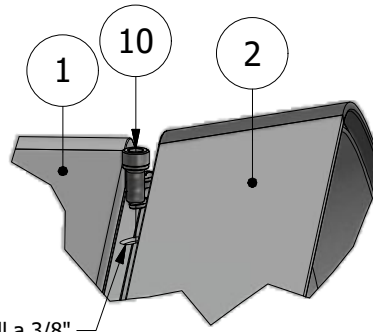
| PARTS LIST | | | |
|------------|---------------|---|------------------------|
| ITEM | PART # | DESCRIPTION | NOTES |
| 1 | K2005/4150 | Wide Body w/ 6in Radius Corners | Assembly |
| 2 | K2086/95/4255 | Tension Frame II & Bleed Cover w/ 6in Radius Corners & Covers | Assembly |
| 10 | 5170 | Hinge Screw | Drill 3/8" pilot hole |
| 11 | 5180 | Closure Screw | Drill 5/16" pilot hole |

NOTE: PRE-CUT KITS ARE NOT PRE-DRILLED.
 (Holes shown in this drawing are for reference only.
 Drilling of pilot holes are to be done by fabricator.)

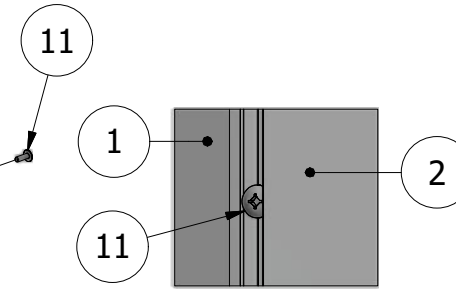
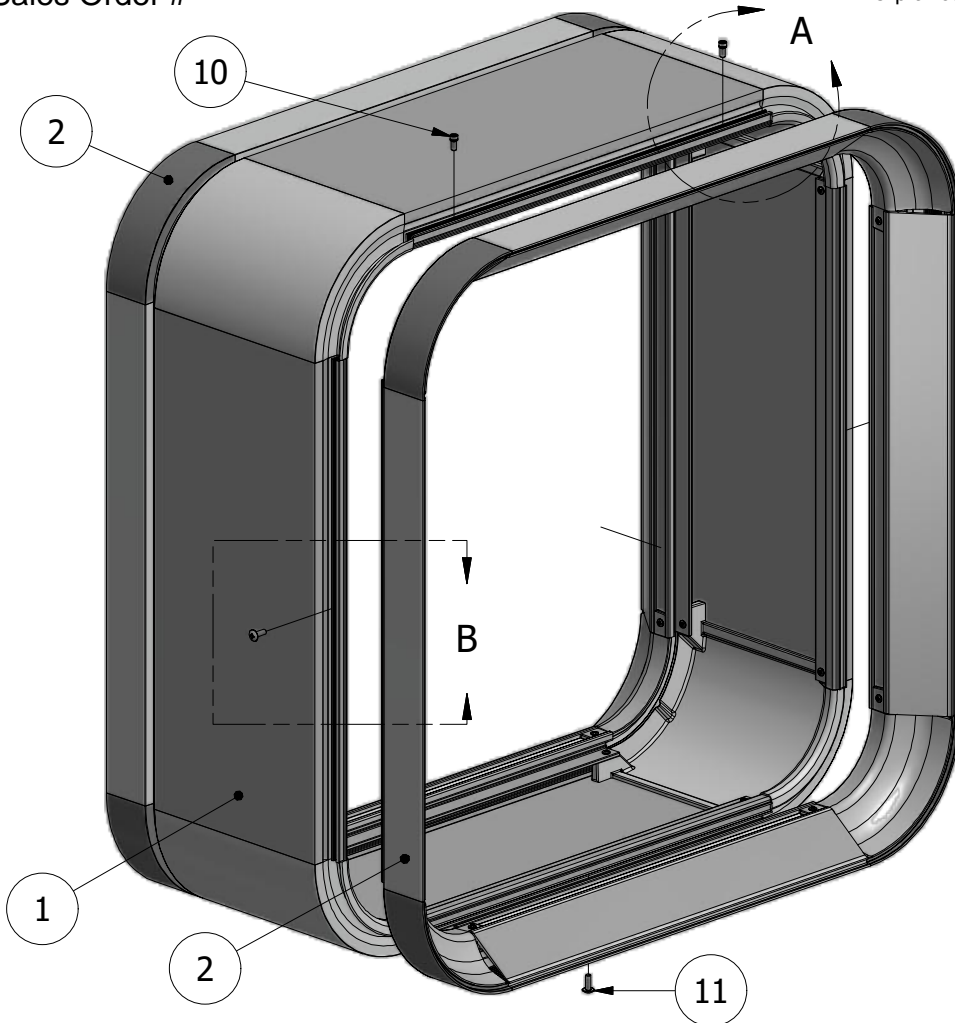
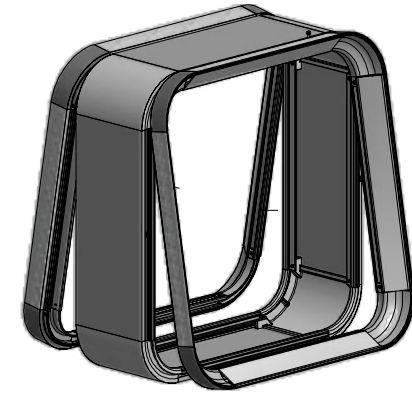
Ship To:
 Sales Order #

***NOTE:** Drill a 3/8" oversized hole for the head of the hinge screw to slip through.

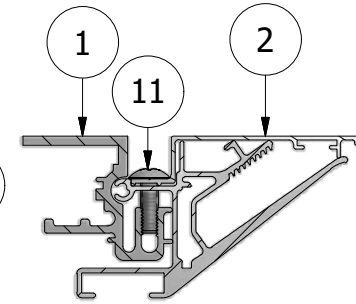
***NOTE:** IT IS RECOMMENDED THAT THE FRAME BE ASSEMBLED ON THE BODY, THEN RATCHET STRAPPED TO CHECK FOR SQUARE, BEFORE THE FRAME IS WELDED OR MECHANICALLY FASTENED.



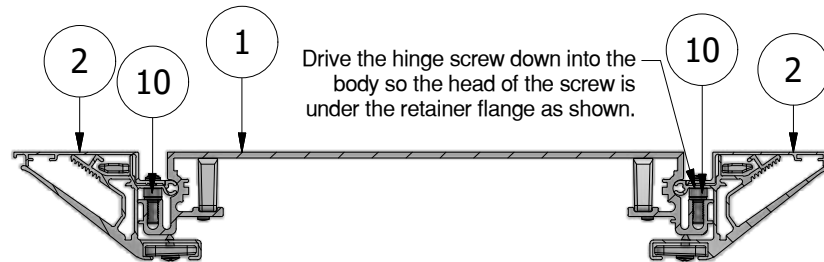
DETAIL A
 HINGED



DETAIL B
 FRAME CLOSED



DETAIL B
 CROSS-SECTION



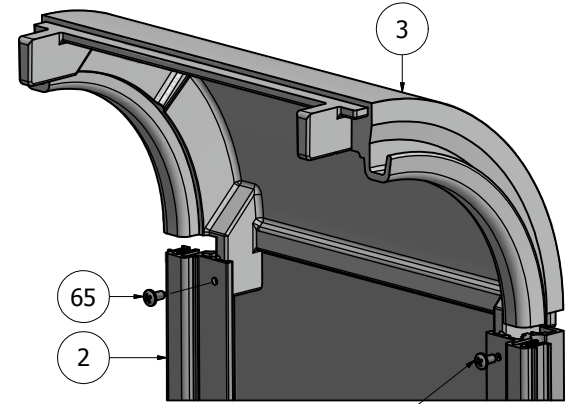
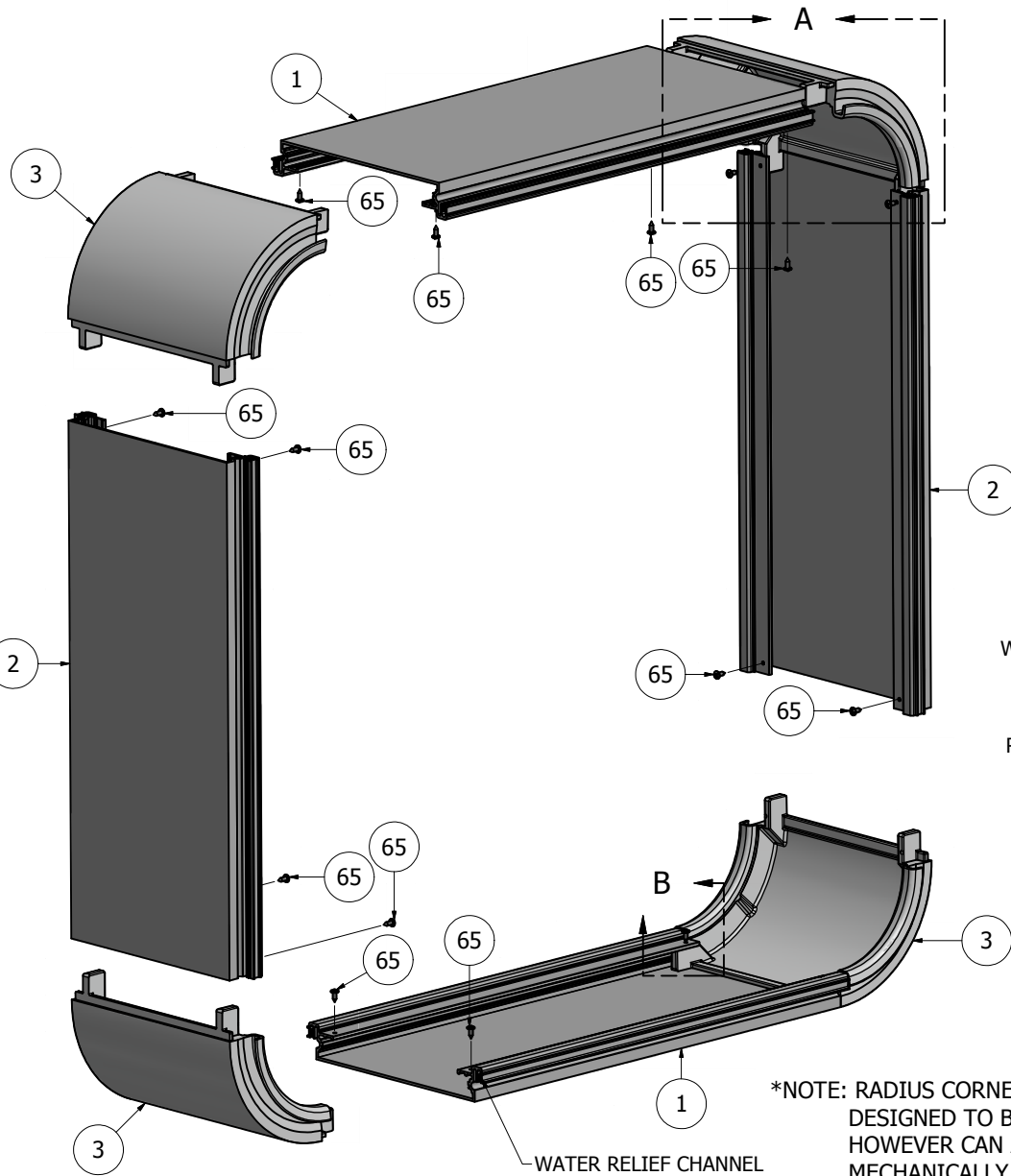
TOP CROSS-SECTION

THIS DRAWING WAS CREATED AT NO CHARGE TO ASSIST YOU IN VISUALIZING OUR PROPOSAL. THE DRAWING HEREIN IS THE PROPERTY OF SIGNCOMP. PERMISSION TO COPY OR REVISE THIS DRAWING OR TO USE THIS DRAWING FOR PRODUCTION IS STRICTLY PROHIBITED AND CAN ONLY BE COPIED, REVISED OR USED FOR PRODUCTION WITH THE EXPRESSED WRITTEN PERMISSION OF SIGNCOMP.

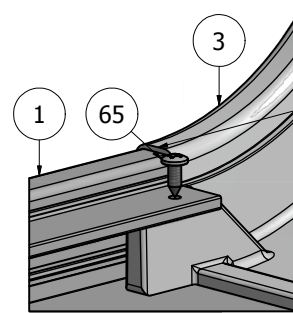
Project Name: Wide Body w/ Tension Frame II & Bleed Cvr-6" Rad. Corners
 Sign Company: KWB/86/95/4528
 Revision: 5/22/2019
 Drawing By: SBreihof
 Sheet: 1 of 1
 Size: A

| PARTS LIST | | | |
|------------|-------|-----------------------------|------------------------|
| ITEM | PART# | DESCRIPTION | NOTES |
| 1 | 2005 | Wide Body | Top & Bottom |
| 2 | 2005 | Wide Body | Sides |
| 3 | 4150 | Wide Body 6in Radius Corner | |
| 65 | 5218 | Radius Corner Screw | Drill 5/32" pilot hole |

Ship To:
Sales Order#

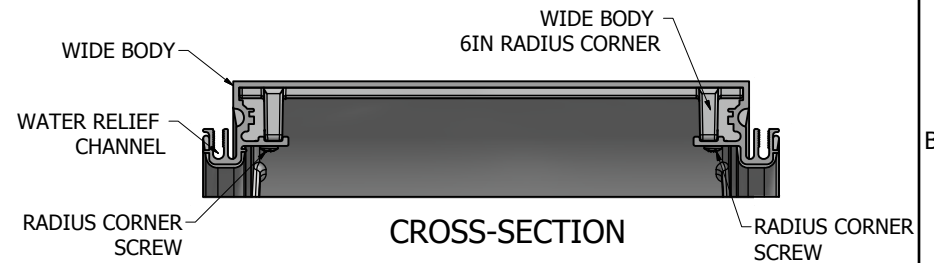


DETAIL A



DETAIL B

Caulk the joints where the Radius Diecast Corners and the Extrusion meet, yet making sure the water relief channel is not blocked, allowing the water to flow.



CROSS-SECTION

NOTE: PRE-CUT KITS ARE NOT PRE-DRILLED.

(Holes shown in this drawing are for reference only. Drilling of pilot holes are to be done by fabricator.)

THIS DRAWING WAS CREATED AT NO CHARGE TO ASSIST YOU IN VISUALIZING OUR PROPOSAL. THE DRAWING HEREIN IS THE PROPERTY OF SIGNCOMP. PERMISSION TO COPY OR REVISE THIS DRAWING OR TO USE THIS DRAWING FOR PRODUCTION IS STRICTLY PROHIBITED AND CAN ONLY BE COPIED, REVISED OR USED FOR PRODUCTION WITH THE EXPRESSED WRITTEN PERMISSION OF SIGNCOMP.

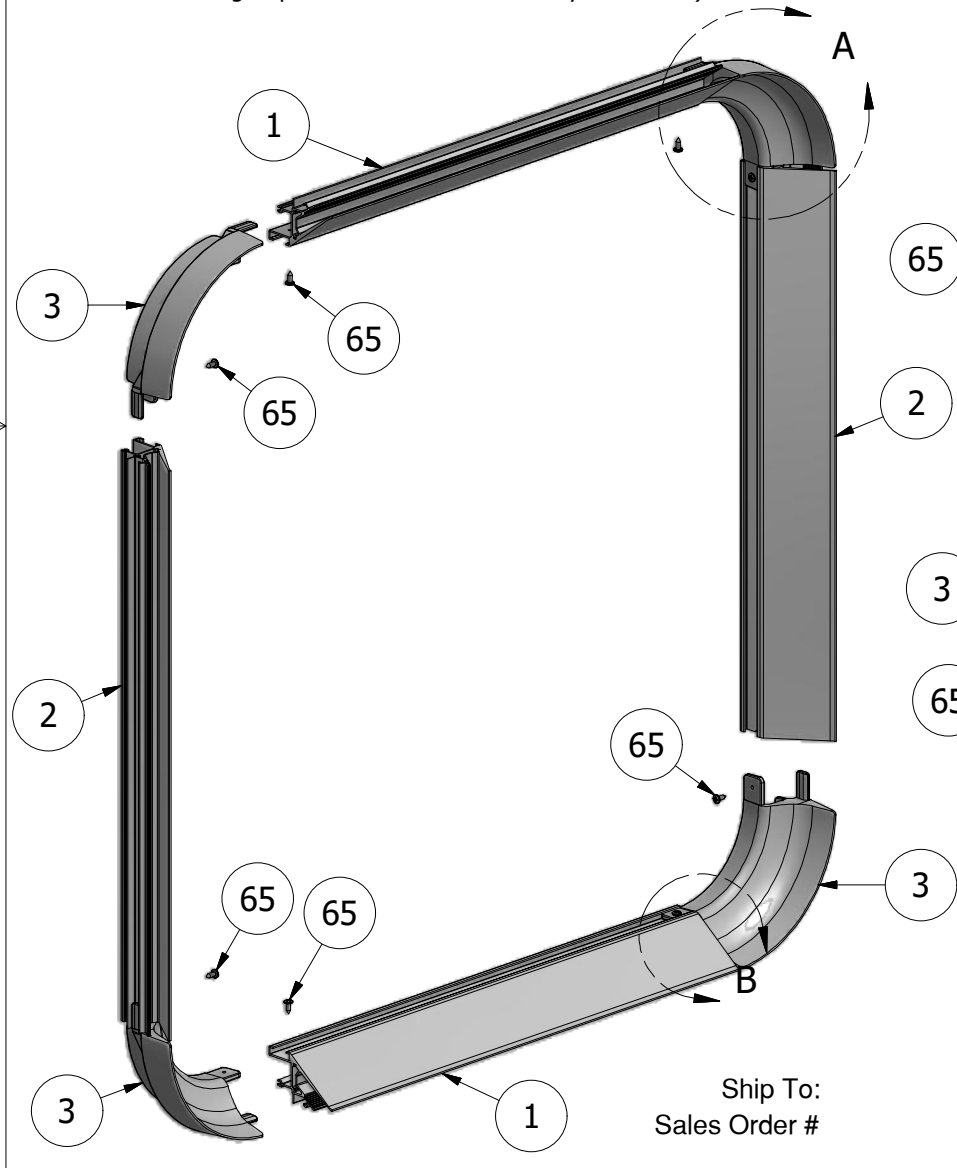
| | | | | |
|-----------------------|-----------------------|--|-------------------|-----|
| DRAWN | SBreihof | 10/23/2012 | SignComp | |
| Centroid X: | 0.000 in | TITLE | | |
| Centroid Y: | 0.000 in | Wide Body w/ 6in Radius Corners - Assembly | | |
| Principal Moments Ix: | 0.000 in ⁴ | DWG NO | KWB - 4150 | REV |
| Principal Moments Iy: | 0.000 in ⁴ | | | |
| Section Modulus Ix: | 0.000 in ³ | | | |
| Section Modulus Iy: | 0.000 in ³ | | | |

*NOTE: RADIUS CORNERS ARE DESIGNED TO BE WELDED, HOWEVER CAN ALSO BE MECHANICALLY ASSEMBLED.

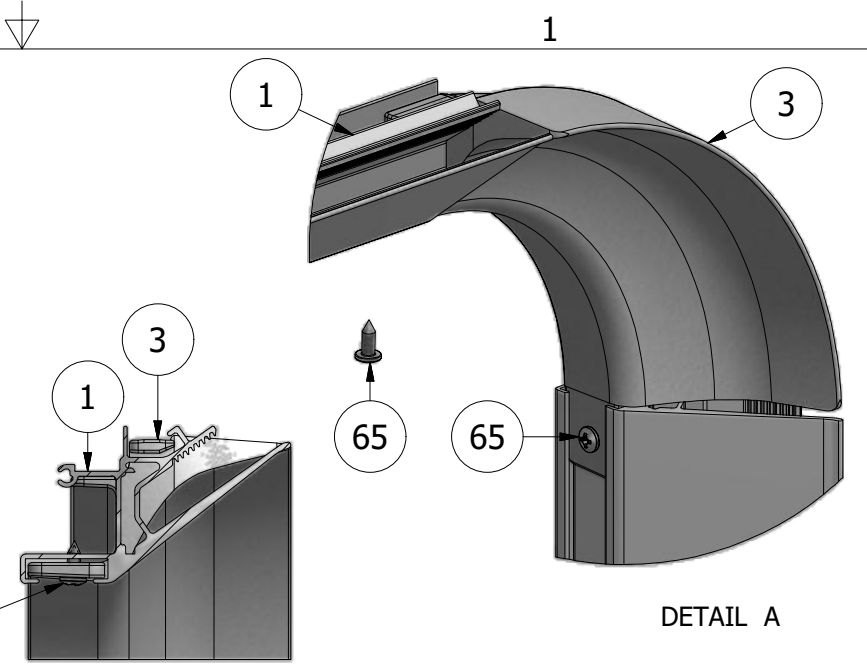
| PARTS LIST | | | |
|------------|--------|------------------------------------|------------------------|
| ITEM | PART # | DESCRIPTION | NOTES |
| 1 | 2086 | Tension Frame II | Top & Bottom |
| 2 | 2086 | Tension Frame II | Sides |
| 3 | 4255 | 6in Tension Frame II Radius Corner | All 4 Corners |
| 65 | 5218 | Radius Corner Screw | Drill 5/32" pilot hole |

NOTE: PRE-CUT KITS ARE NOT PRE-DRILLED.

(Holes shown in this drawing are for reference only.
Drilling of pilot holes are to be done by fabricator.)

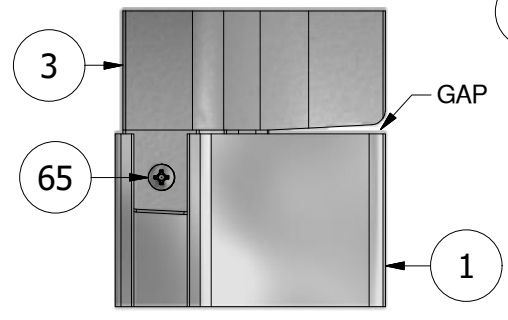


Ship To:
Sales Order #

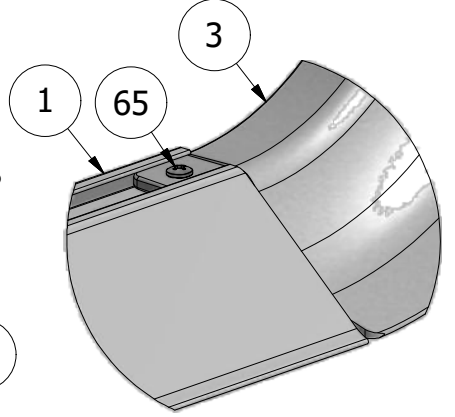


CROSS-SECTION VIEW

***NOTE: GAPS ARE REQUIRED FOR PROPER ASSEMBLY.**



DETAIL B-2



DETAIL B-1

***NOTE: IT IS RECOMMENDED THAT THE FRAME BE ASSEMBLED ON THE BODY, THEN RATCHET STRAPPED TO CHECK FOR SQUARE, BEFORE THE FRAME IS WELDED OR MECHANICALLY FASTENED.**

THIS DRAWING WAS CREATED AT NO CHARGE TO ASSIST YOU IN VISUALIZING OUR PROPOSAL. THE DRAWING HEREIN IS THE PROPERTY OF SIGNCOMP. PERMISSION TO COPY OR REVISE THIS DRAWING OR TO USE THIS DRAWING FOR PRODUCTION IS STRICTLY PROHIBITED AND CAN ONLY BE COPIED, REVISED OR USED FOR PRODUCTION WITH THE EXPRESSED WRITTEN PERMISSION OF SIGNCOMP.

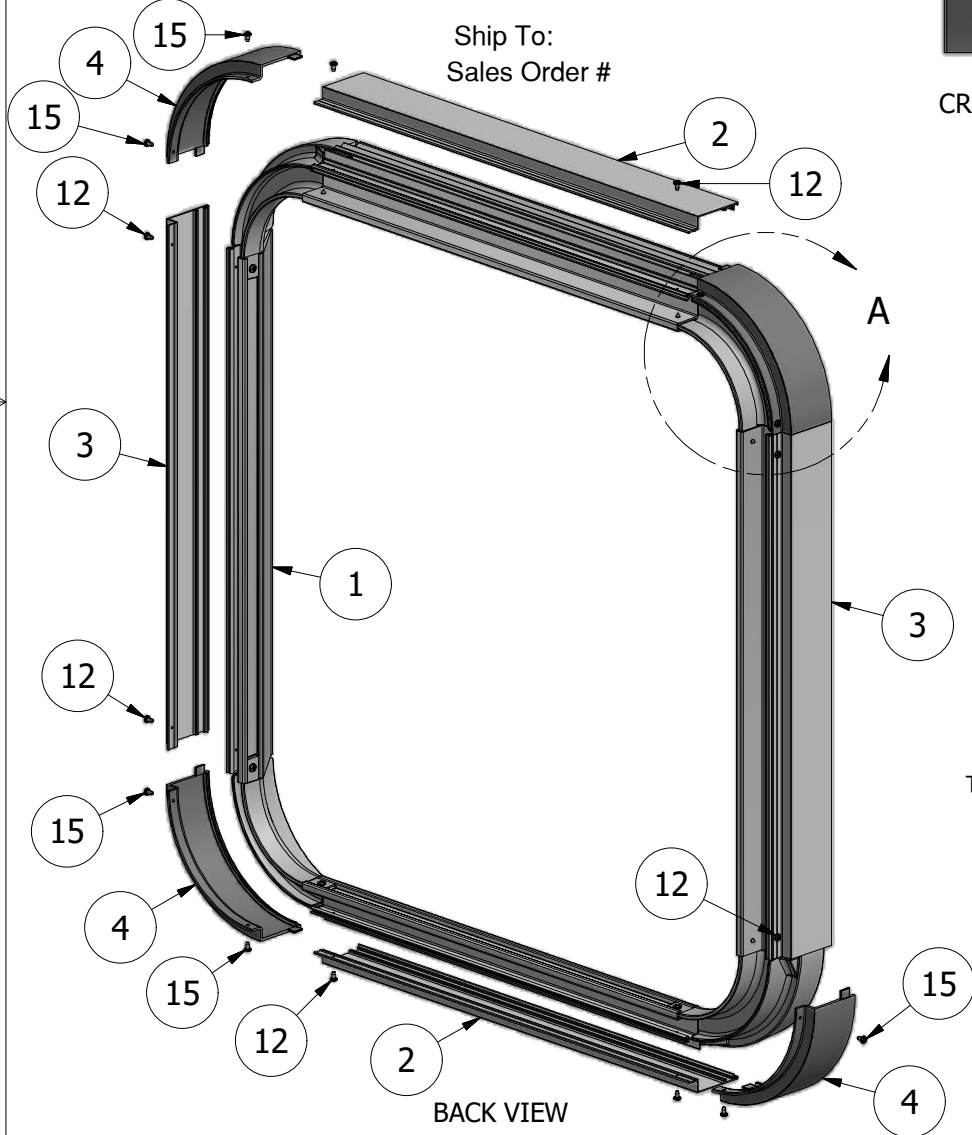
| | |
|---------------|--|
| Project Name: | Tension Frame II with 6" Rad. Corners - Assembly |
| Sign Company: | K2086-4255 |
| Part #: | |
| Revision: | |
| Date: | 5/14/2019 |
| Sheet: | 1 of 1 |
| Size: | A |
| Drawing By: | SBreihof |



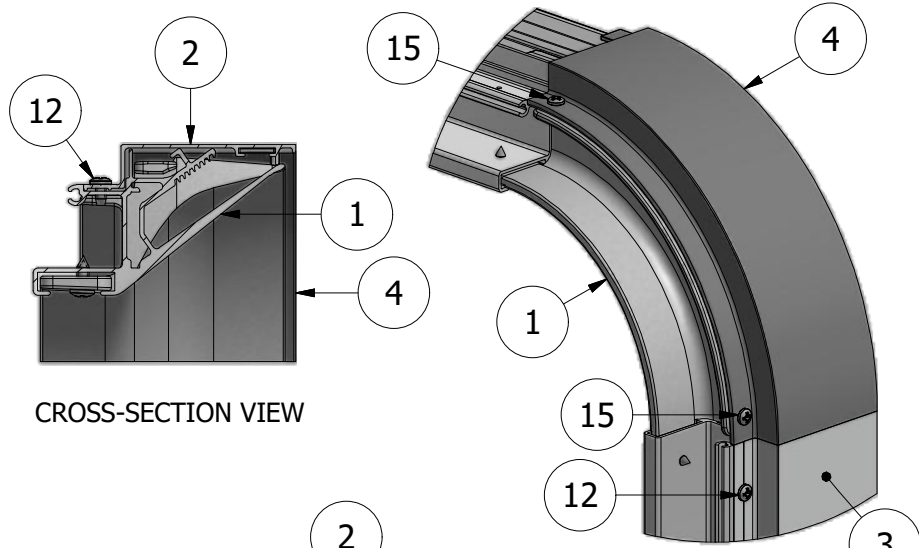
PARTS LIST

| ITEM | PART # | DESCRIPTION | NOTES |
|------|------------|--|----------------------|
| 1 | K2086/4255 | Tension Frame II w/ 6in Radius Corners | Assembly |
| 2 | 2095 | Bleed Tension Frame Cover | Top & Bottom |
| 3 | 2095 | Bleed Tension Frame Cover | Sides |
| 4 | 4265P | 6in Bleed Tension Frame Radius Cover | |
| 12 | 5195 | Cover Screw | Pre-drill 3/32" hole |
| 15 | 5195 | Radius Corner Cover Screw | Pre-drill 3/32" hole |

Ship To:
Sales Order #

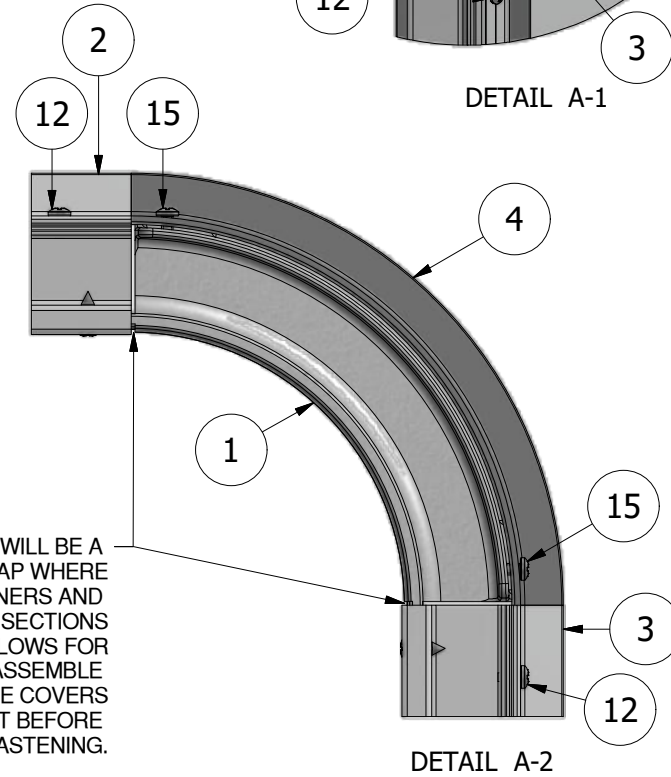


BACK VIEW



CROSS-SECTION VIEW

DETAIL A-1



DETAIL A-2

***NOTE:** THERE WILL BE A CONSISTANT GAP WHERE THE RADIUS CORNERS AND TENSION FRAME SECTIONS MEET. THIS ALLOWS FOR THE FRAME TO ASSEMBLE SQUARE AND THE COVERS TO FIT TIGHT BEFORE FASTENING.

NOTE: PRE-CUT KITS ARE NOT PRE-DRILLED.
(Holes shown in this drawing are for reference only.
Drilling of pilot holes are to be done by fabricator.)

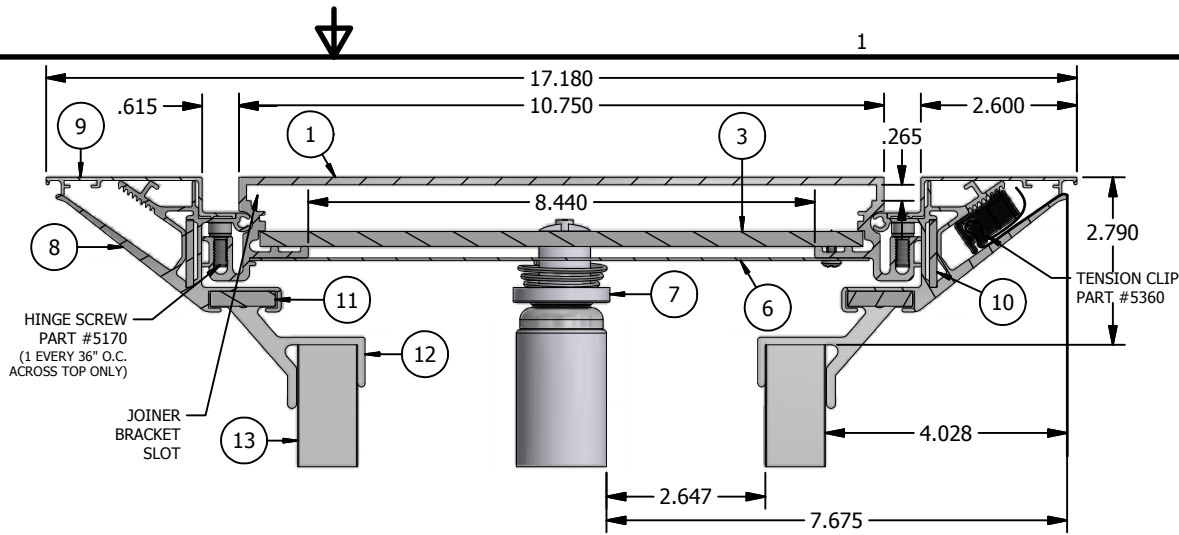
THIS DRAWING WAS CREATED AT NO CHARGE TO ASSIST YOU IN VISUALIZING OUR PROPOSAL. THE DRAWING HEREIN IS THE PROPERTY OF SIGNCOMP. PERMISSION TO COPY OR REVISE THIS DRAWING OR TO USE THIS DRAWING FOR PRODUCTION IS STRICTLY PROHIBITED AND CAN ONLY BE COPIED, REVISED OR USED FOR PRODUCTION WITH THE EXPRESSED WRITTEN PERMISSION OF SIGNCOMP.

| | | | |
|-----------------|--|-----------------|----------------------|
| SignComp | Project Name: Tension Frame II and Bleed Cover - 6" Rad. Covers - Assembly | Sheet: 1 of 1 | Size: A |
| | Sign Company: K2086-95-4265P | Date: 5/14/2019 | Drawing By: SBreihof |

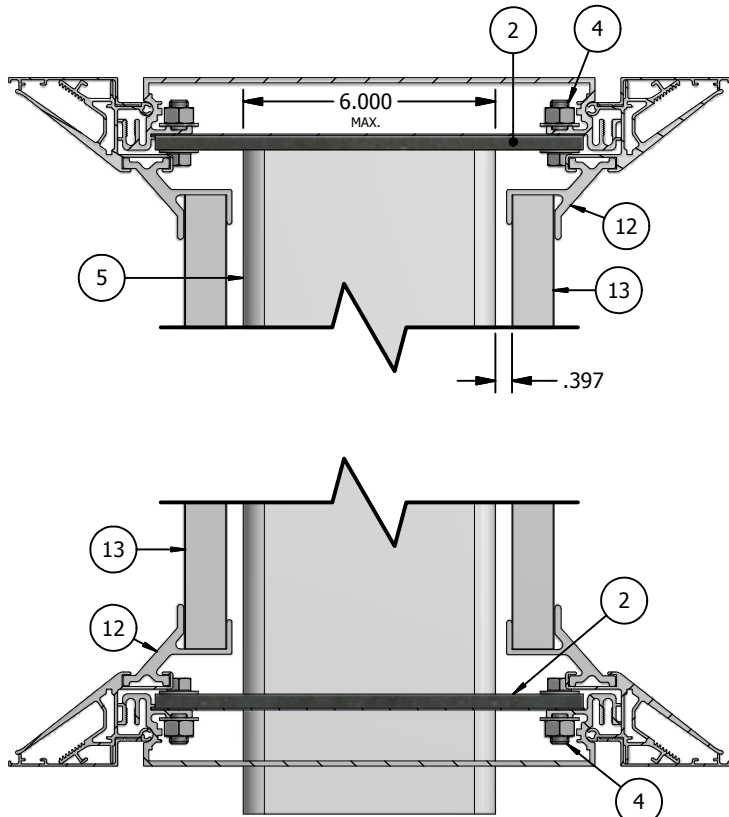
| ITEM | PART # | DESCRIPTION |
|------|----------|--------------------------------------|
| 1 | 2005 | Wide Body |
| 2 | | WB Support Mounting Plate - By Other |
| 3 | 5312 | Wide Body Corner Angle |
| 4 | | Main Support Plate Bolt Assembly |
| 5 | | Main Support - By Other |
| 6 | 5116 | Raceway Cover - Blank |
| 7 | Lamp End | Lamp & Socket |
| 8 | 2086 | Tension Frame II |
| 10 | 5210 | Corner Key |
| 11 | 5305 | Frame Corner Angle |
| 12 | 5352 | Small Frame Brace |
| 9 | 2095 | Bleed Tension Frame Cover |
| 13 | 2177 | Small Frame Support Tube |

NOTE:

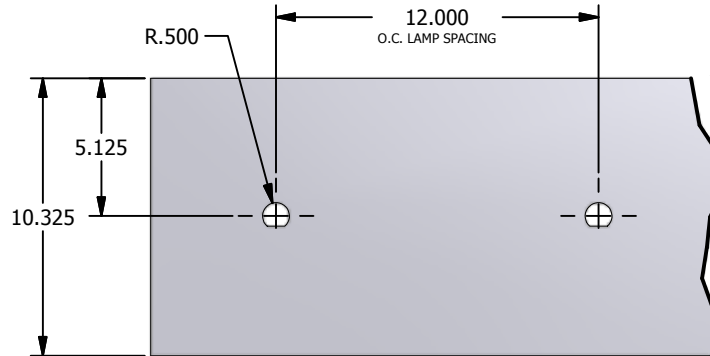
All structural detailing for sign construction is the sole responsibility of the sign contractor. All details shown here should be considered as **DESIGN INTENT ONLY**. The sign fabricator shall provide engineering drawings stamped by a licenced structural engineer.



SECTION VIEW - ELECTRICAL



SECTION VIEW - STRUCTURAL



RACEWAY D-PUNCH DETAIL

NOTES:

1. ADD 1" TO SIZE OF CABINET (VERTICAL OR HORIZONTAL) WHEN THE SIZE OF THE CABINET IS THE SAME SIZE AS THE NOMINAL LAMP LENGTH.
2. SIGNCOMP DOES NOT SUPPLY THE BALLAST(S).
3. SIGNCOMP DOES NOT SUPPLY MAIN SUPPORT.

THIS DRAWING WAS CREATED AT NO CHARGE TO ASSIST YOU IN VISUALIZING OUR PROPOSAL. THE DRAWING HEREIN IS THE PROPERTY OF SIGNCOMP. PERMISSION TO COPY OR REVISE THIS DRAWING OR TO USE THIS DRAWING FOR PRODUCTION IS STRICTLY PROHIBITED AND CAN ONLY BE COPIED, REVISED OR USED FOR PRODUCTION WITH THE EXPRESSED WRITTEN PERMISSION OF SIGNCOMP.

Project Name: **WB w/ Tension Frame II & Cover - Cross Sect.** Revision: **9/17/2014** Date: **9/17/2014** Drawing By: **SBreihof** Sheet: **1 of 1** Size: **A**

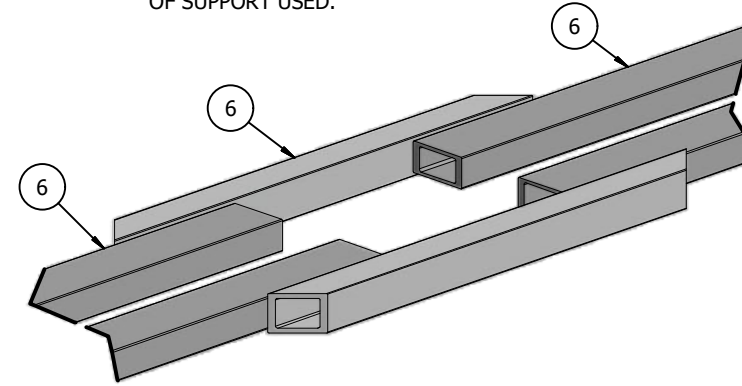
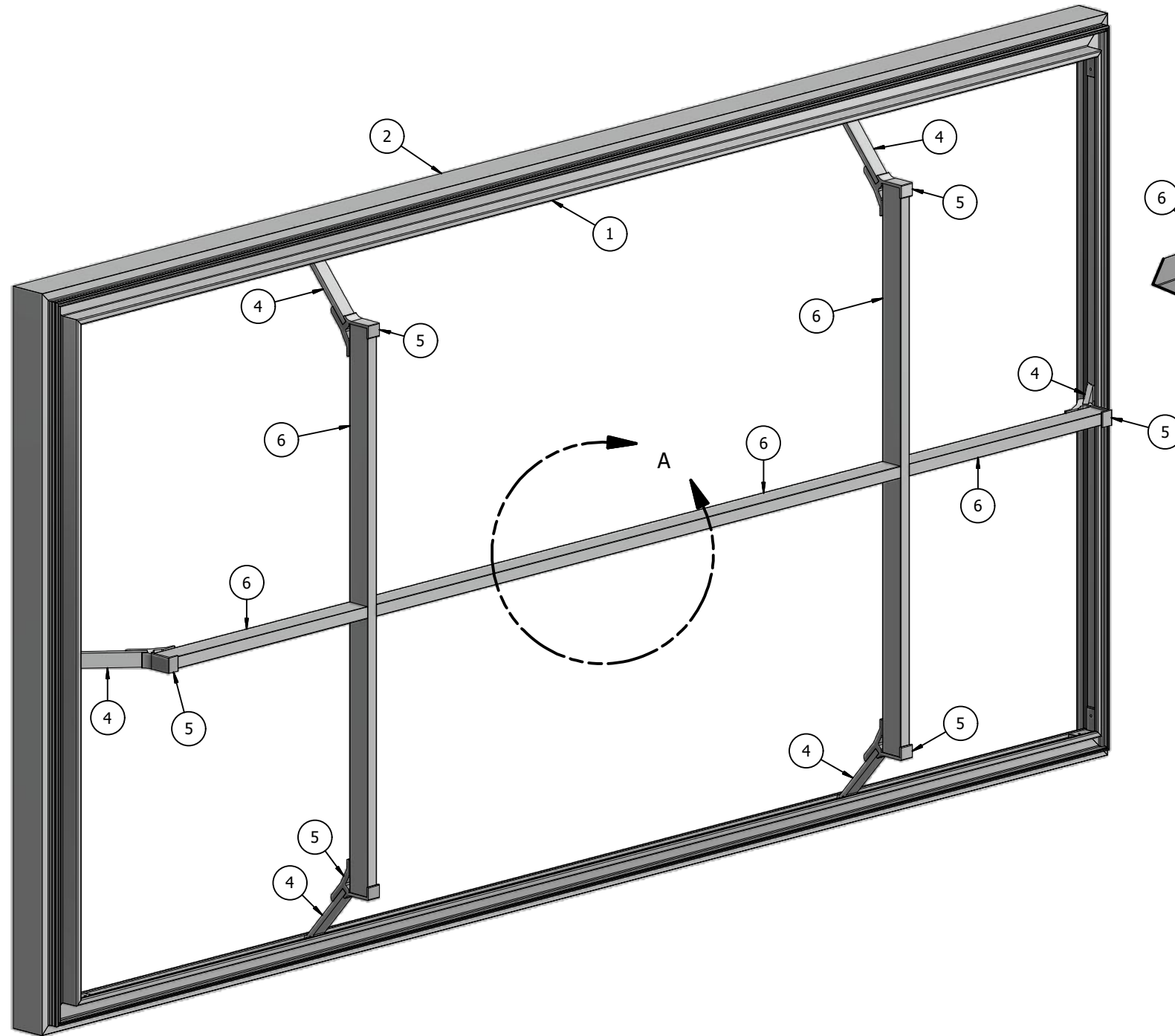
SignComp

WIDE BODY ONLY

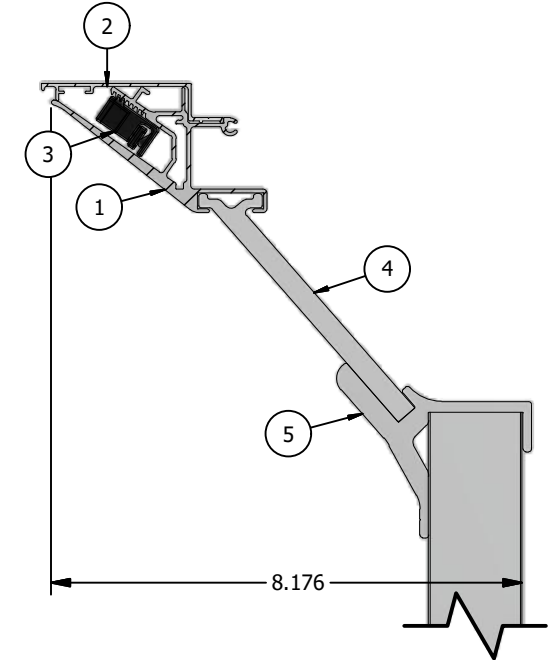
| ITEM | PART # | DESCRIPTION |
|------|-------------|-------------------------------|
| 1 | 2086 | Tension Frame II |
| 2 | 2095 | Bleed Tension Frame Cover |
| 3 | 5360 | Tension Clip |
| 4 | 5357 - Arm | 2 Piece Frame Brace - Arm |
| 5 | 5357 - Yolk | 2 Piece Frame Brace - Yolk |
| 6 | 2175 | Frame Support Tube - Vertical |

NOTE: THE DETAIL BELOW SHOWS THE FRAME SUPPORT SYSTEM AS IT WOULD APPEAR IN A CABINET, WITH THE CENTER OF THE HORIZONTAL SUPPORTS CUT OUT AND BUILT OUT AROUND WHERE THE MAIN SUPPORT WOULD RUN. THIS DETAIL WOULD VARY DEPENDING ON THE SIZE OF SUPPORT USED.

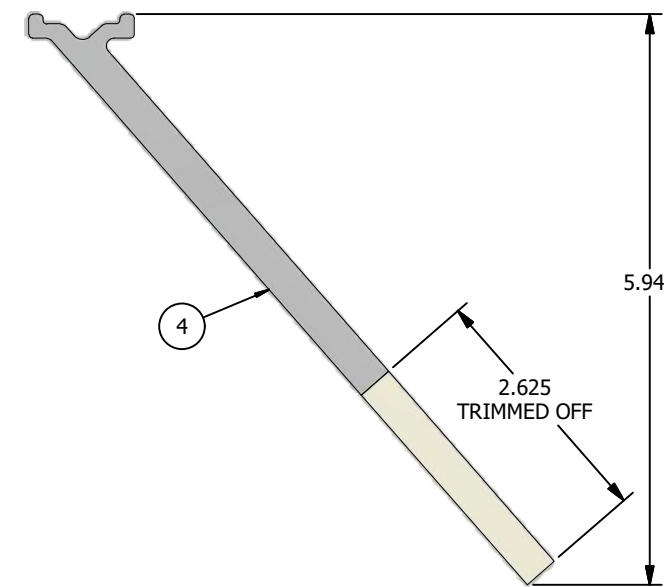
NOTE: All structural detailing for sign construction is the sole responsibility of the sign contractor. All details shown here should be considered as **DESIGN INTENT ONLY**. The sign fabricator shall provide engineering drawings stamped by a licenced structural engineer.



DETAIL A



FRAME CROSS-SECTION VERTICAL BRACING



PART #5357 - ARM TRIMMING DETAILS

NOTE: IN AN LED APPLICATION, IT IS IMPORTANT TO GET THE FRAME SUPPORTS RECESSED AS FAR BACK INTO THE CABINET AS POSSIBLE, SO IT'S NOT TO IMPEDE THE LIGHT PATH OF THE LEDS.

THIS DRAWING WAS CREATED AT NO CHARGE TO ASSIST YOU IN VISUALIZING OUR PROPOSAL. THE DRAWING HEREIN IS THE PROPERTY OF SIGNCOMP. PERMISSION TO COPY OR REVISE THIS DRAWING OR TO USE THIS DRAWING FOR PRODUCTION IS STRICTLY PROHIBITED AND CAN ONLY BE COPIED, REVISED OR USED FOR PRODUCTION WITH THE EXPRESSED WRITTEN PERMISSION OF SIGNCOMP.

SignComp
 Project Name: **Compression Bracing-5357 LEDs**
 Sign Company: **2086**
 Date: **6/26/2019**
 Drawing By: **SBreihof**
 Sheet: **1 of 1**
 Size: **B**