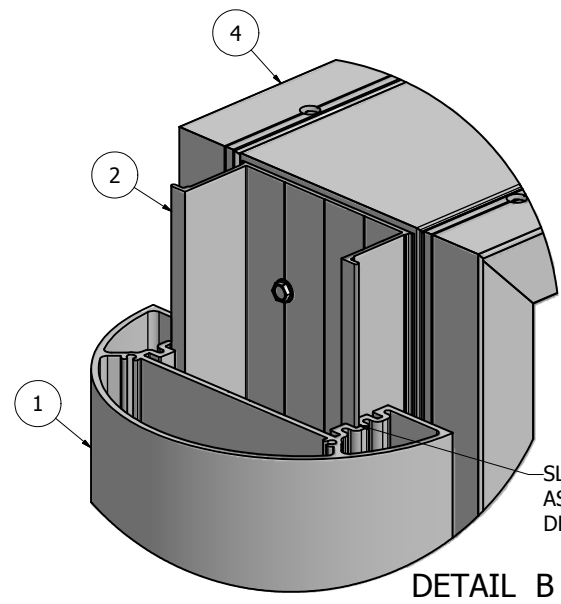
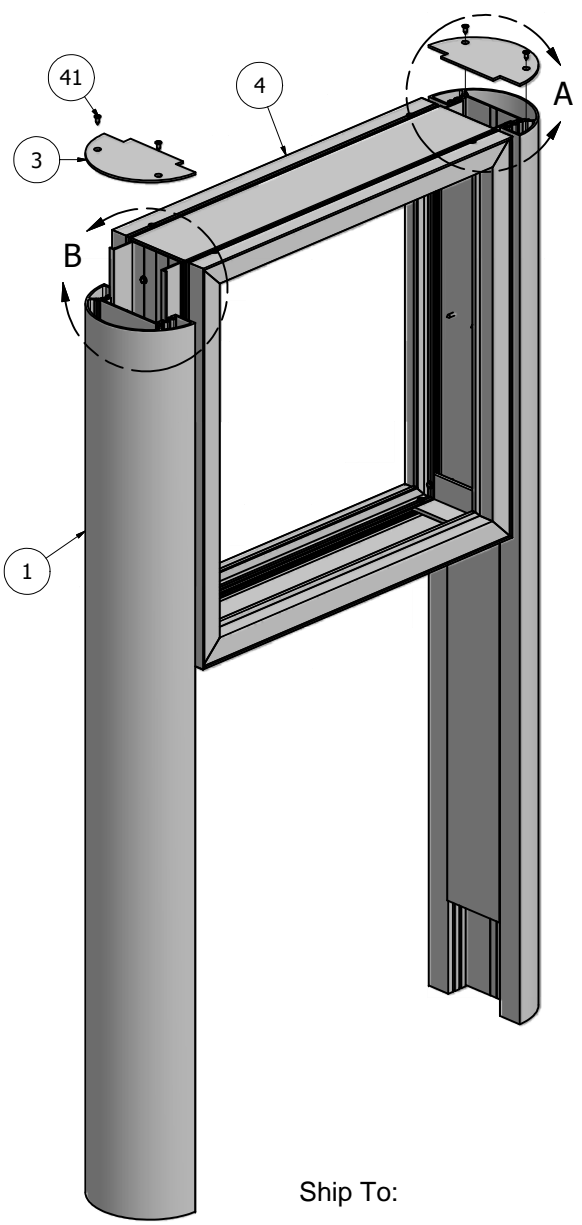
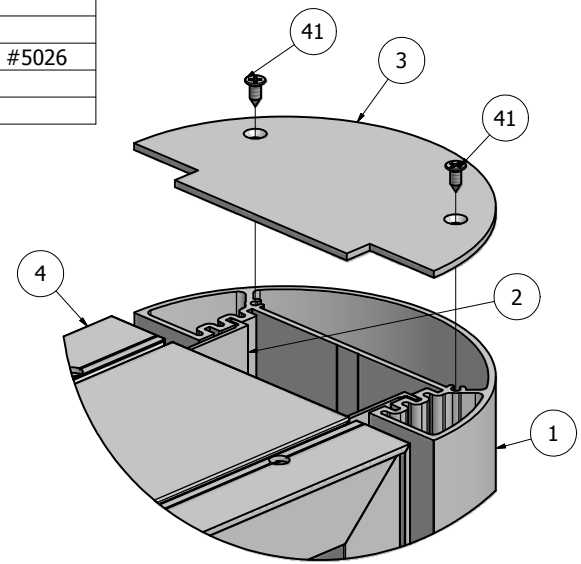


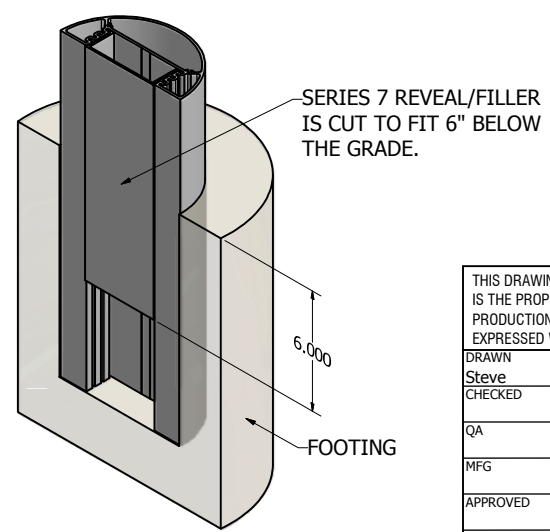
Parts List			NOTES
ITEM	PART #	DESCRIPTION	
1	K1500-50	Series 7 Radius Post Assembly	
2	1550	Series 7 Reveal	Attached to body
3	Post Cap	Series 7 Radius Post Cap	Zero Reveal Part #5020, 1/2" Reveal Part #2024, 1" Reveal Part #5026
41	5040	Cap Screw	2 - #10 x 1/2" counter sunk phillips head screws
4	K1592-50-1632	Series 7 Hinge Body - Bleed Retainer - Assembly	Slide assembly into post



SLIDE BODY/CABINET ASSEMBLY INTO THE DESIRED REVEAL POSITION.

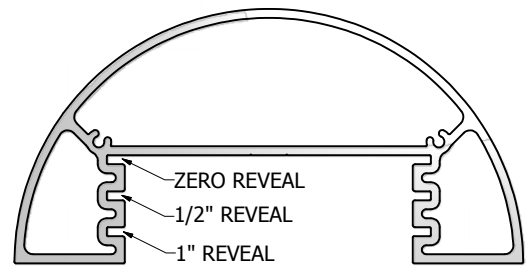


DETAIL A



SERIES 7 REVEAL/FILLER IS CUT TO FIT 6" BELOW THE GRADE.

FOOTING

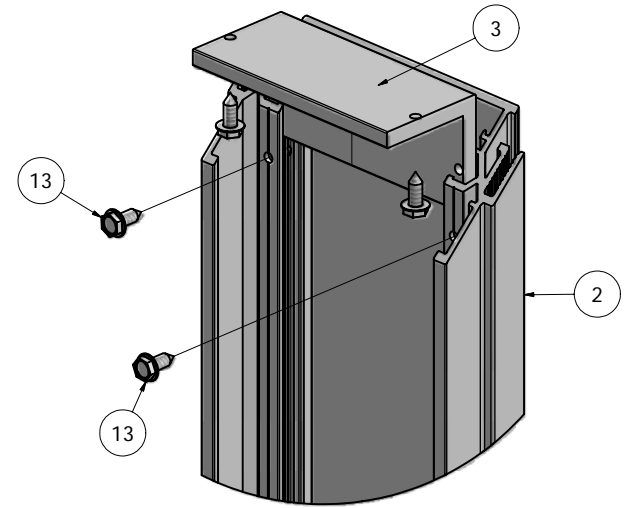
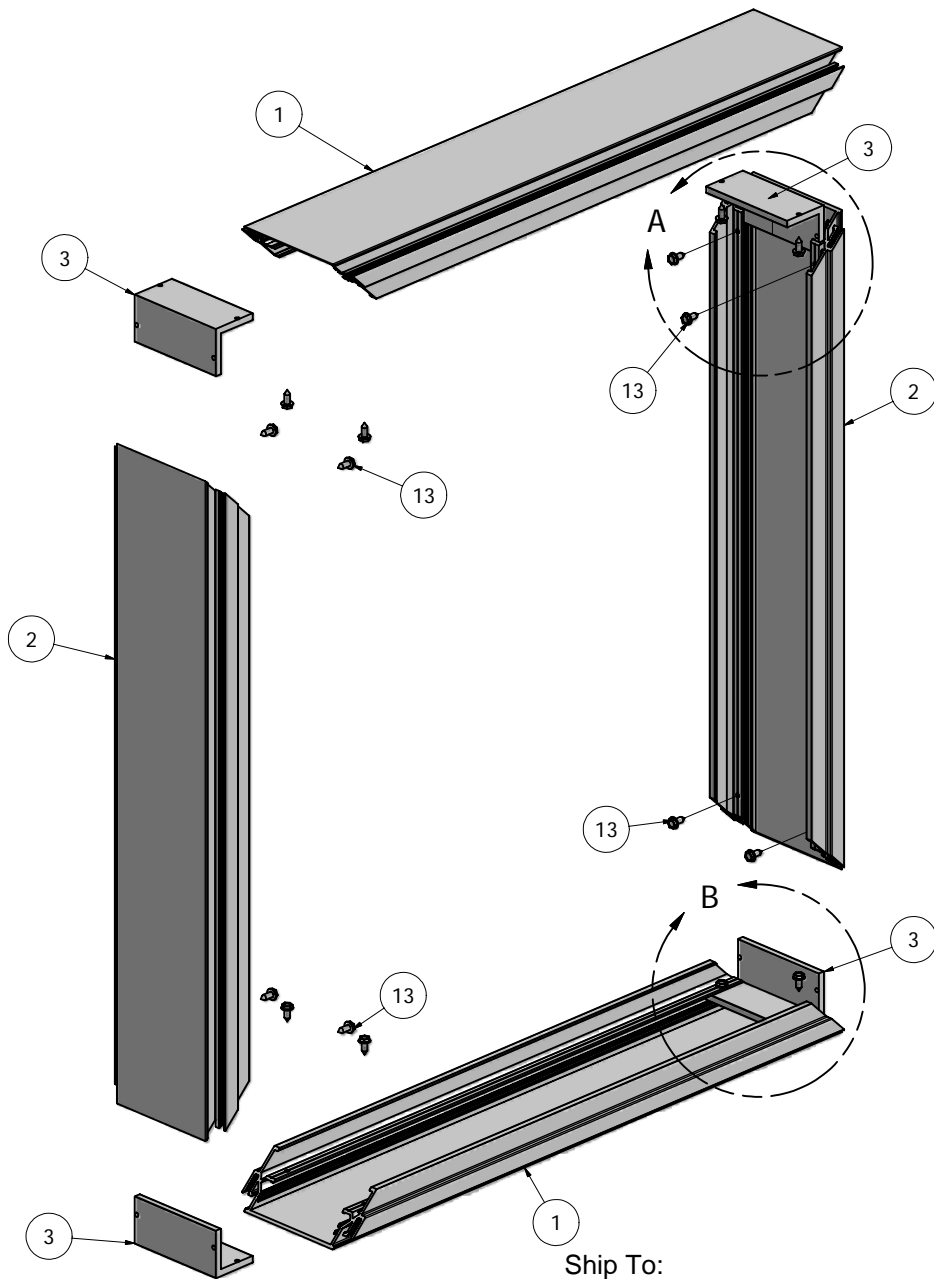


NOTE: PRE-CUT KITS ARE NOT PRE-DRILLED.
 (Holes shown in this drawing are for reference only.
 Drilling of pilot holes are to be done by fabricator.)

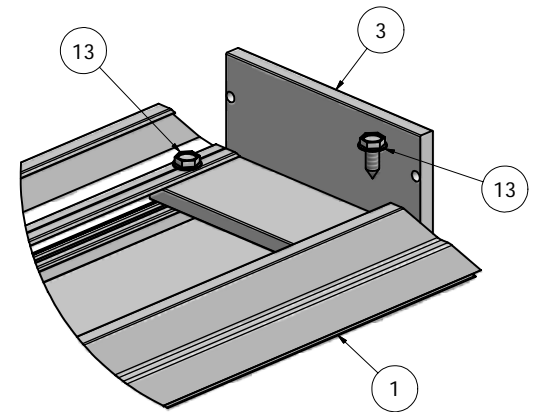
Ship To:
 Order #:

THIS DRAWING WAS CREATED AT NO CHARGE TO ASSIST YOU IN VISUALIZING OUR PROPOSAL. THE DRAWING HEREIN IS THE PROPERTY OF SIGNCOMP. PERMISSION TO COPY OR REVISE THIS DRAWING OR TO USE THIS DRAWING FOR PRODUCTION IS STRICTLY PROHIBITED AND CAN ONLY BE COPIED, REVISED OR USED FOR PRODUCTION WITH THE EXPRESSED WRITTEN PERMISSION OF SIGNCOMP.			
DRAWN	12/11/2009	SignComp	
Steve			
CHECKED		TITLE	
QA		Series 7 Hinge Body/Bleed Retainer - Series 7 Radius Post - Assembly	
MFG		SIZE	DWG NO
APPROVED		C	K1592-00-1632
		SCALE	REV
			1
			SHEET 1 OF 1

Parts List			
ITEM	PART #	DESCRIPTION	NOTES
1	1592	Series 7 Hinge Body	Top & Bottom
2	1592	Series 7 Hinge Body	Sides
3	5344	Series 7 Hinge Body Corner Angle	
13	5218	Corner Angle Screw	Drill 5/32" Pilot Hole



DETAIL A



DETAIL B

NOTE: PRE-CUT KITS ARE NOT PRE-DRILLED.

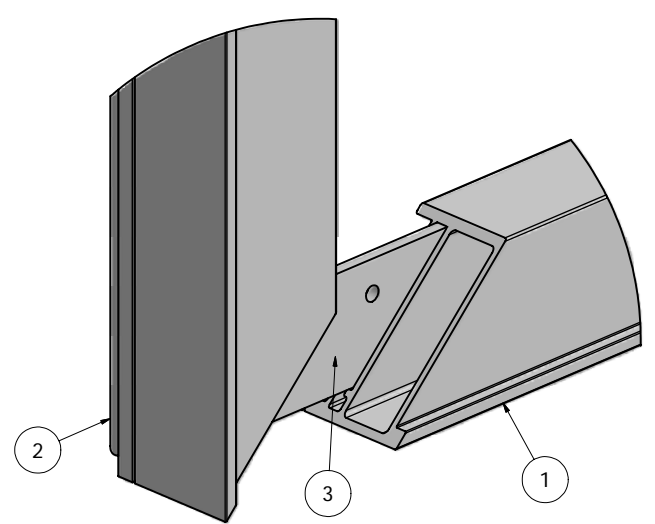
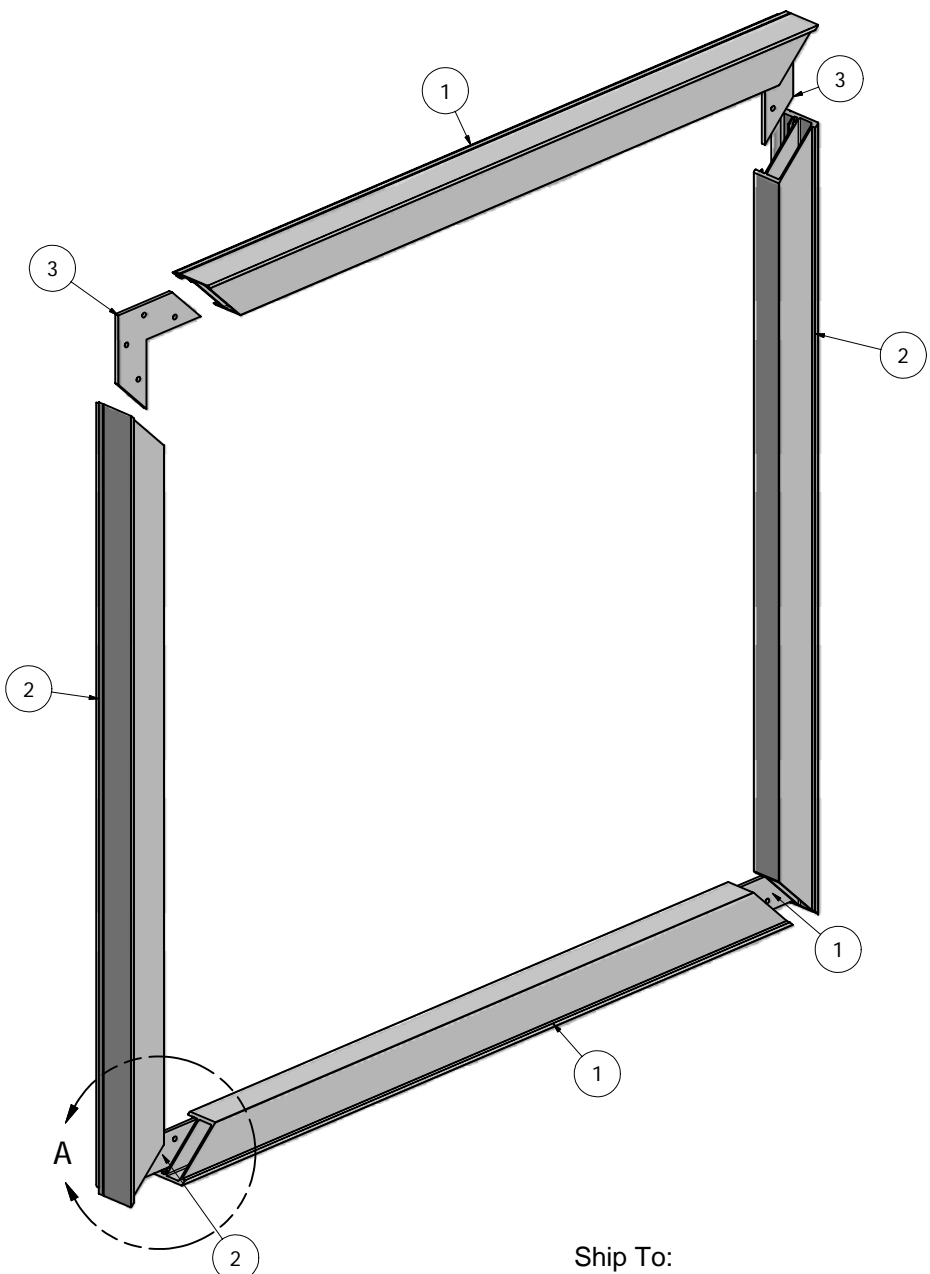
(Holes shown in this drawing are for reference only.
Drilling of pilot holes are to be done by fabricator.)

THIS DRAWING WAS CREATED AT NO CHARGE TO ASSIST YOU IN VISUALIZING OUR PROPOSAL. THE DRAWING HEREIN IS THE PROPERTY OF SIGNCOMP. PERMISSION TO COPY OR REVISE THIS DRAWING OR TO USE THIS DRAWING FOR PRODUCTION IS STRICTLY PROHIBITED AND CAN ONLY BE COPIED, REVISED OR USED FOR PRODUCTION WITH THE EXPRESSED WRITTEN PERMISSION OF SIGNCOMP.

DRAWN Steve	12/12/2008	SignComp					
CHECKED					TITLE Series 7 Hinge Body - Assembly		
QA					SIZE C	DWG NO K1592	REV
MFG					SCALE	SHEET 1 OF 1	
APPROVED							

Ship To:
Order #:

Parts List			
ITEM	PART #	DESCRIPTION	NOTES
1	1632	Bleed Retainer	Top & Bottom
2	1632	Bleed Retainer	Sides
3	5210	Corner Key	Pre-Punched



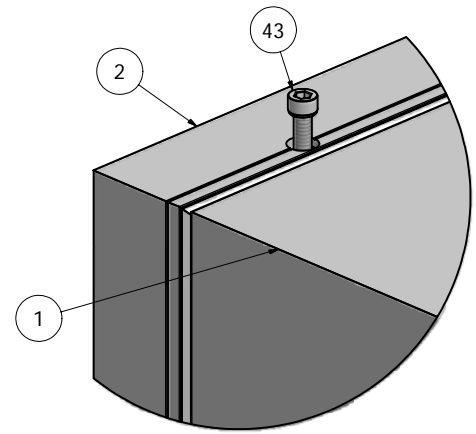
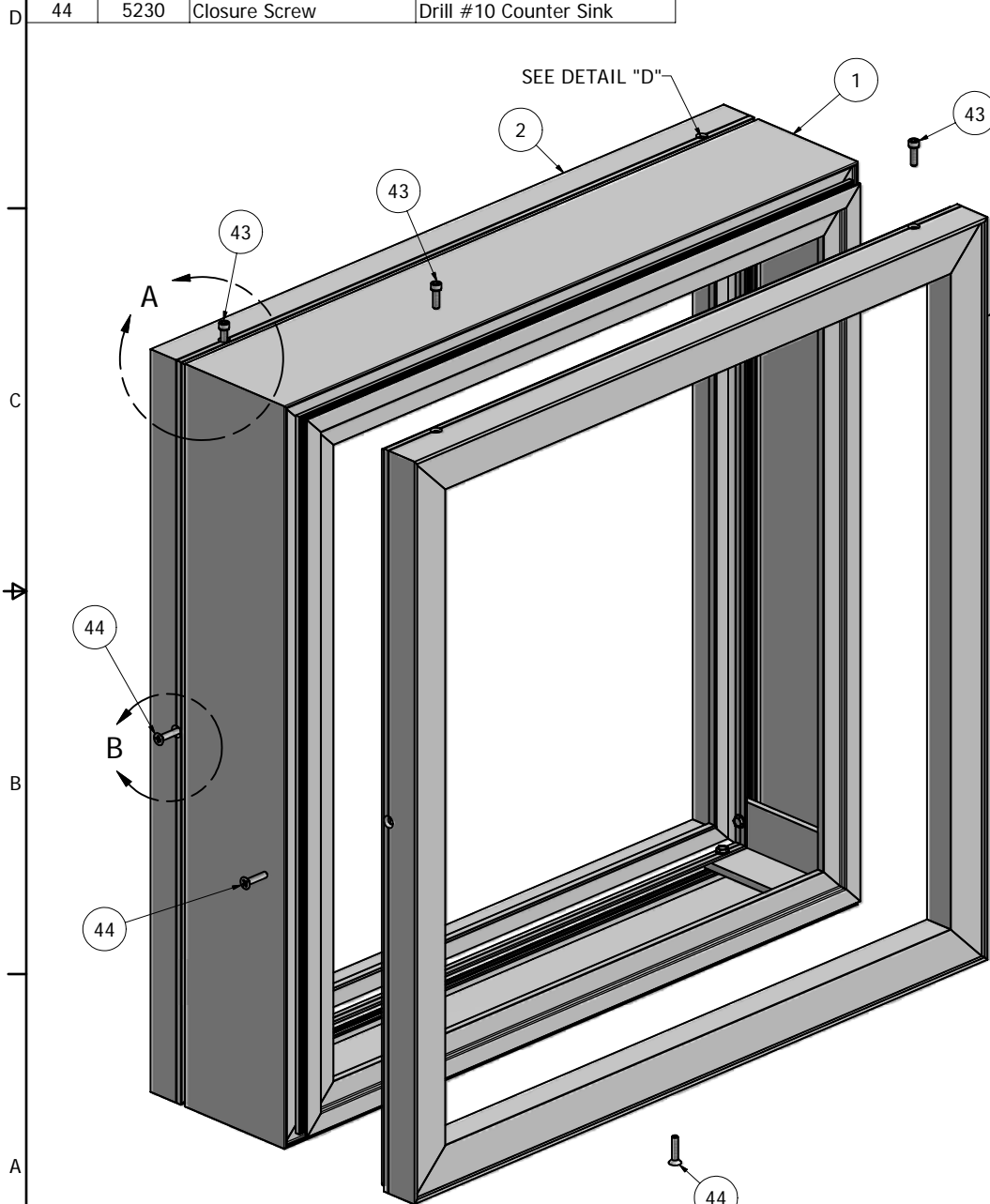
DETAIL A

NOTE: PRE-CUT KITS ARE NOT PRE-DRILLED.
 (Holes shown in this drawing are for reference only.
 Drilling of pilot holes are to be done by fabricator.)

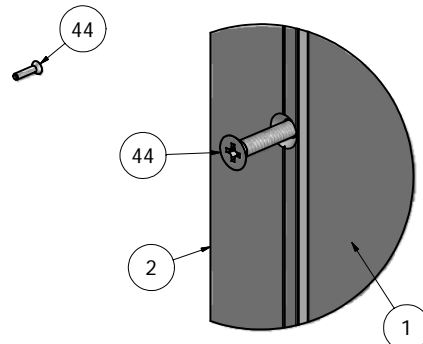
THIS DRAWING WAS CREATED AT NO CHARGE TO ASSIST YOU IN VISUALIZING OUR PROPOSAL. THE DRAWING HEREIN IS THE PROPERTY OF SIGNCOMP. PERMISSION TO COPY OR REVISE THIS DRAWING OR TO USE THIS DRAWING FOR PRODUCTION IS STRICTLY PROHIBITED AND CAN ONLY BE COPIED, REVISED OR USED FOR PRODUCTION WITH THE EXPRESSED WRITTEN PERMISSION OF SIGNCOMP.				
DRAWN	12/22/2008	<h1>SignComp</h1> <p>Bleed Retainer - Assembly</p>		
CHECKED				
QA				
MFG				
APPROVED				
		SIZE	DWG NO	REV
		C	K1632	
		SCALE	SHEET 1 OF 1	

Ship To:
 Order #:

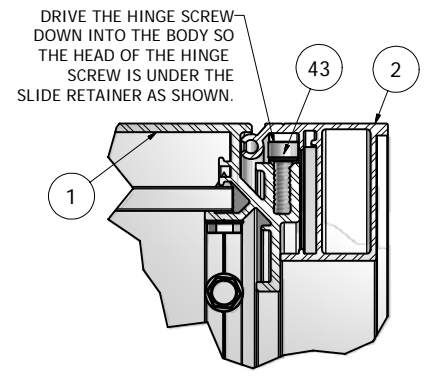
Parts List			
ITEM	PART #	DESCRIPTION	NOTES
1	K1592	Series 7 Hinge Body	Assembly
2	K1632	Bleed Retainer	Assembly
43	5280	Hinge Screw	Drill 11/32" Pilot Hole
44	5230	Closure Screw	Drill #10 Counter Sink



DETAIL A



DETAIL B



DETAIL D

DRIVE THE HINGE SCREW DOWN INTO THE BODY SO THE HEAD OF THE HINGE SCREW IS UNDER THE SLIDE RETAINER AS SHOWN.

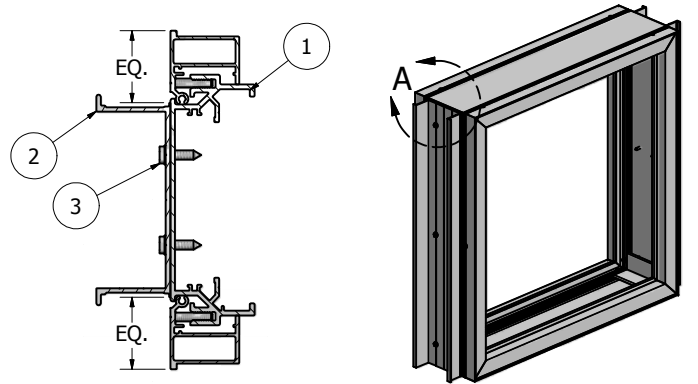
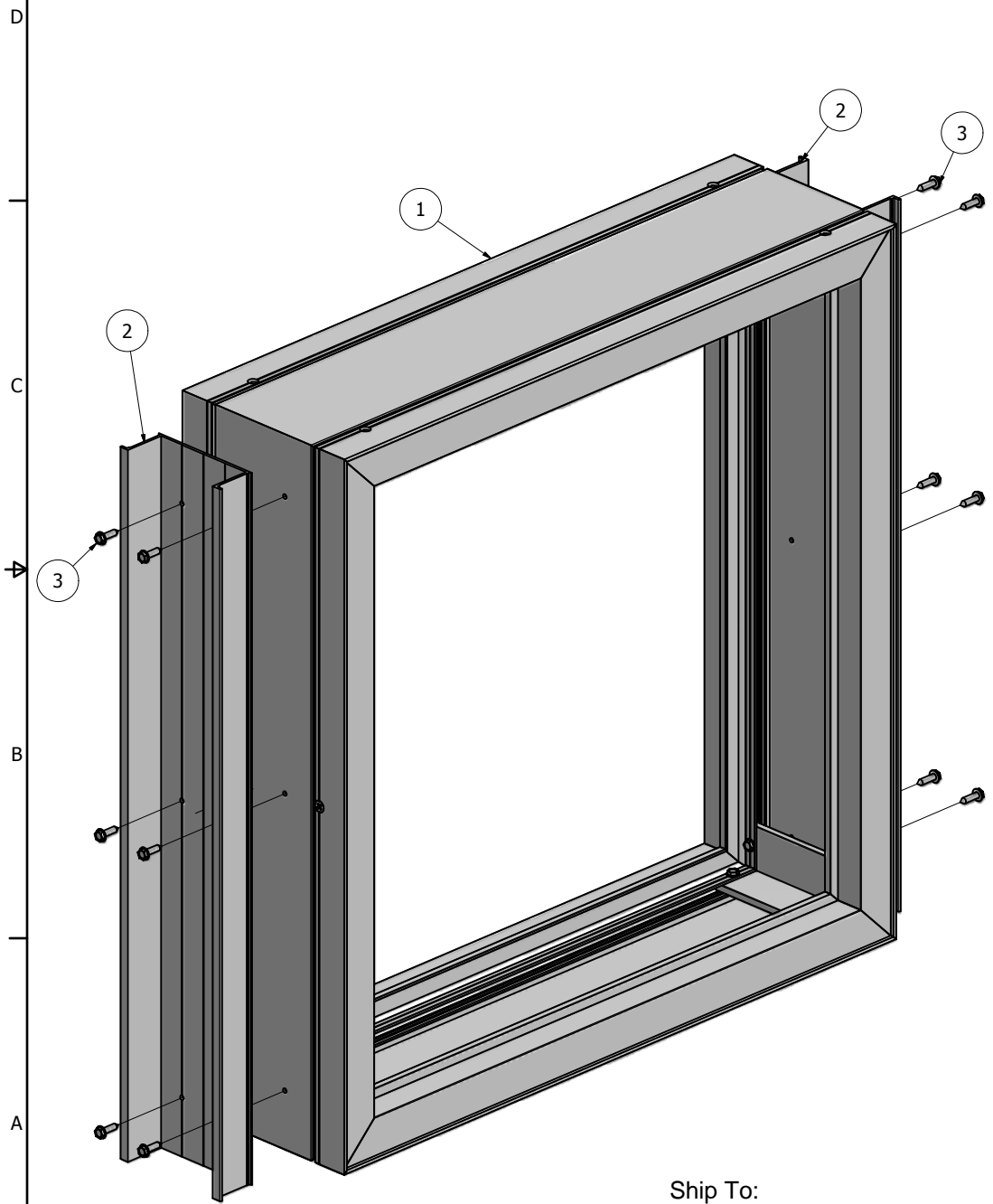
NOTE: PRE-CUT KITS ARE NOT PRE-DRILLED.
 (Holes shown in this drawing are for reference only.
 Drilling of pilot holes are to be done by fabricator.)

THIS DRAWING WAS CREATED AT NO CHARGE TO ASSIST YOU IN VISUALIZING OUR PROPOSAL. THE DRAWING HEREIN IS THE PROPERTY OF SIGNCOMP. PERMISSION TO COPY OR REVISE THIS DRAWING OR TO USE THIS DRAWING FOR PRODUCTION IS STRICTLY PROHIBITED AND CAN ONLY BE COPIED, REVISED OR USED FOR PRODUCTION WITH THE EXPRESSED WRITTEN PERMISSION OF SIGNCOMP.

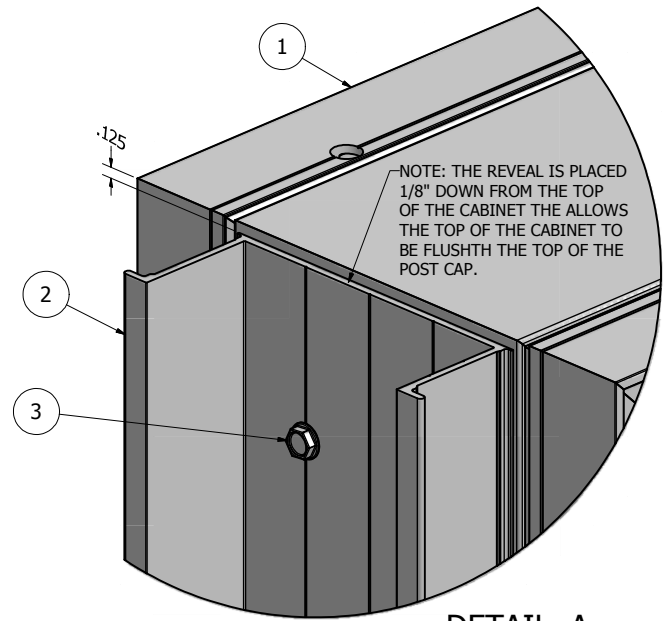
DRAWN	Steve	12/23/2008	SignComp		
CHECKED					
QA			TITLE		
MFG			Series 7 Hinge Body with Bleed Retainer - Assembly		
APPROVED			SIZE	DWG NO	REV
			C	K1592/1632	
			SCALE	SHEET 1 OF 1	

44
 Ship To:
 Order #:

Parts List			
ITEM	PART #	DESCRIPTION	NOTES
1	K1592-1632	Series 7 Hinge Body - Bleed Retainer	Assembly
2	1550	Series 7 Reveal	Attach to Hinge Body
3	5220	Reveal to Body Screw	Drill 5/32" pilot Hole in pairs 12" OC



SECTION B-B



DETAIL A

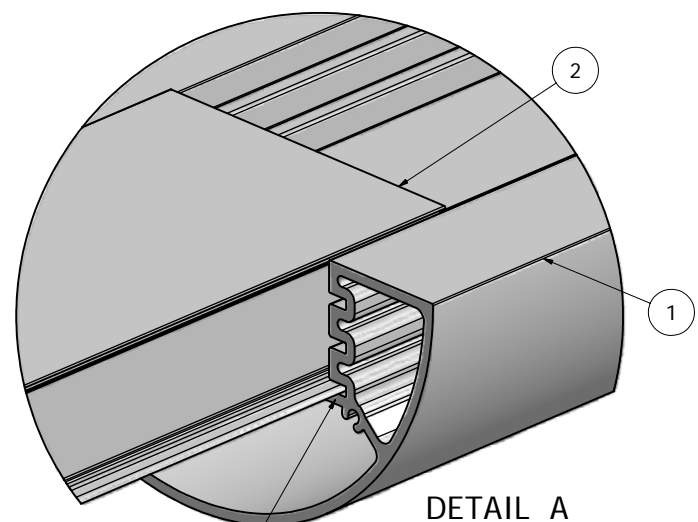
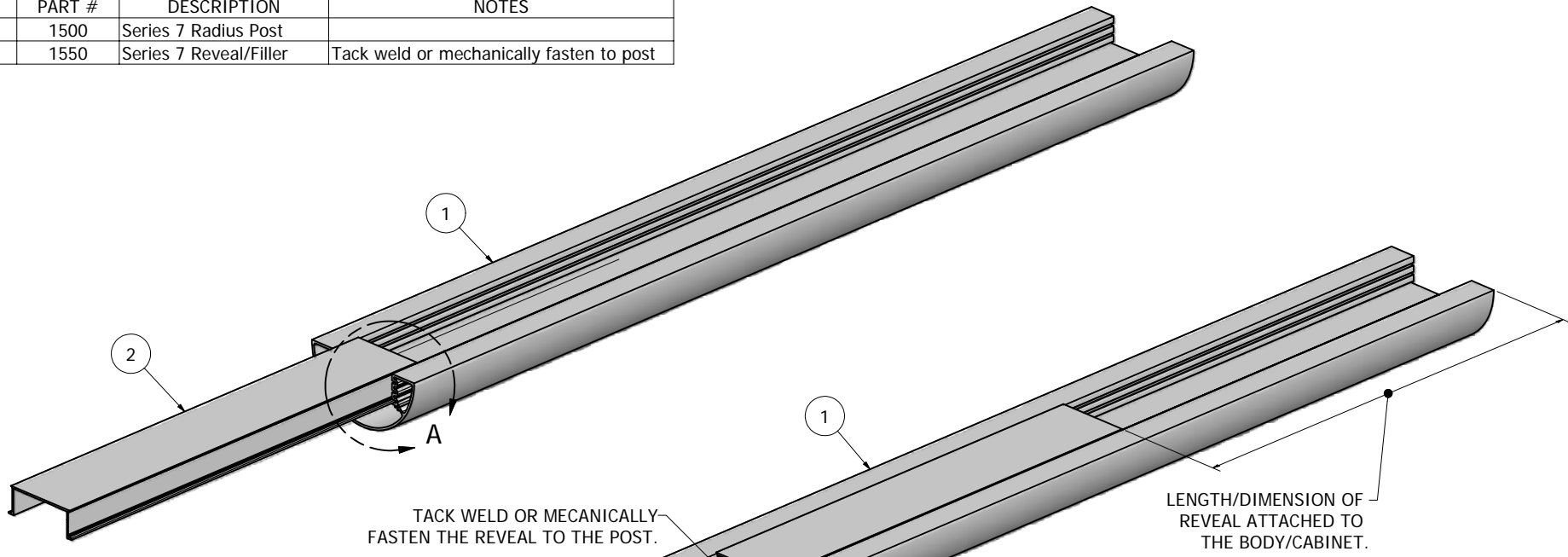
NOTE: PRE-CUT KITS ARE NOT PRE-DRILLED.
 (Holes shown in this drawing are for reference only.
 Drilling of pilot holes are to be done by fabricator.)

THIS DRAWING WAS CREATED AT NO CHARGE TO ASSIST YOU IN VISUALIZING OUR PROPOSAL. THE DRAWING HEREIN IS THE PROPERTY OF SIGNCOMP. PERMISSION TO COPY OR REVISE THIS DRAWING OR TO USE THIS DRAWING FOR PRODUCTION IS STRICTLY PROHIBITED AND CAN ONLY BE COPIED, REVISED OR USED FOR PRODUCTION WITH THE EXPRESSED WRITTEN PERMISSION OF SIGNCOMP.

DRAWN	12/10/2009	SignComp	
CHECKED			
QA		TITLE	
MFG		Series 7 Hinge Body - Bleed Retainer - Series 7 Reveal - Assembly	
APPROVED		SIZE	DWG NO
		C	K1592-50-1632
		SCALE	REV

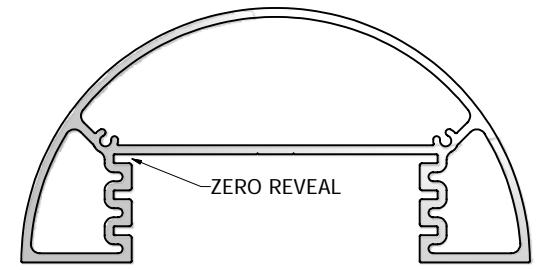
Ship To:
 Order #:

Parts List			
ITEM	PART #	DESCRIPTION	NOTES
1	1500	Series 7 Radius Post	
2	1550	Series 7 Reveal/Filler	Tack weld or mechanically fasten to post



INSERT THE REVEAL/FILLER INTO THE ZERO REVEAL POSTION. SLIDED IT UP INTO THE POST.

Ship To:
Order #:



NOTE: PRE-CUT KITS ARE NOT PRE-DRILLED.
(Holes shown in this drawing are for reference only. Drilling of pilot holes are to be done by fabricator.)

THIS DRAWING WAS CREATED AT NO CHARGE TO ASSIST YOU IN VISUALIZING OUR PROPOSAL. THE DRAWING HEREIN IS THE PROPERTY OF SIGNCOMP. PERMISSION TO COPY OR REVISE THIS DRAWING OR TO USE THIS DRAWING FOR PRODUCTION IS STRICTLY PROHIBITED AND CAN ONLY BE COPIED, REVISED OR USED FOR PRODUCTION WITH THE EXPRESSED WRITTEN PERMISSION OF SIGNCOMP.			
DRAWN	8/5/2009	SignComp	
CHECKED			
QA			
MFG			
APPROVED			
TITLE		Series 7 Radius Post and Reveal/Filler Assembly	
SIZE	C	DWG NO	K1500-50
SCALE			REV
			SHEET 1 OF 1