

Features & Benefits

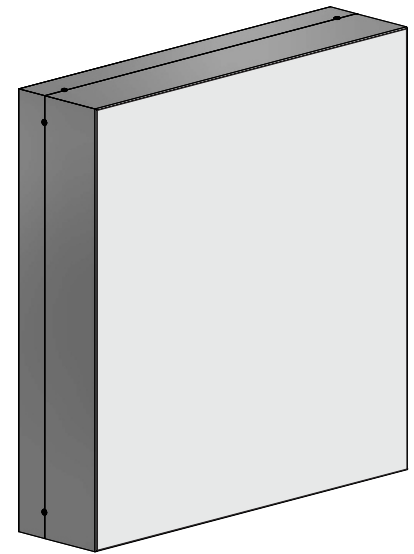
The Flat Bleed Double Face Body is a great option for interior applications with three mounting options: Ceiling mount, Cantilever, and Freestanding. There are internal provisions to accommodate 1" structural tubes. This narrow D/F tension body is ideal for LED applications. Available in Mill Finish.

Answers to FAQ's

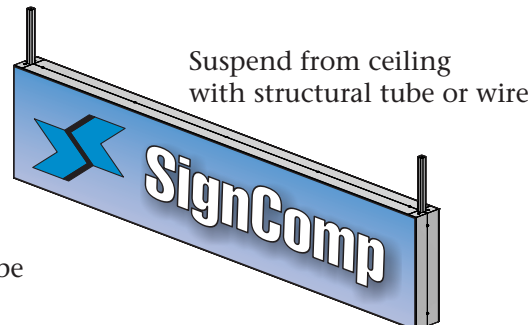
- Accepts up to 22 oz banner material
- Tension Clip placement - Tension Clips are placed approximately 1-1/2" from the edge of the trimmed to size face material
- Tension Clip spacing - Every 5" on center
- Face material trim size - Add 3-1/4" of fabric to all four sides. (Adding a total of 6-1/2" to both the height and width)
- The correct Tension Tool to use with this frame is Part #5135
- No compression bracing required

Optional Items

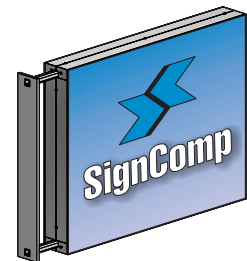
- Tension Tool, part #5135



Freestanding
with structural tube



Suspend from ceiling
with structural tube or wire



Cantilever off walls
with structural tube