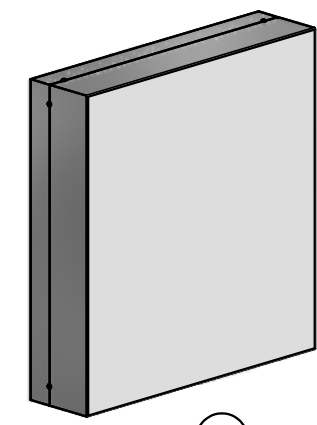
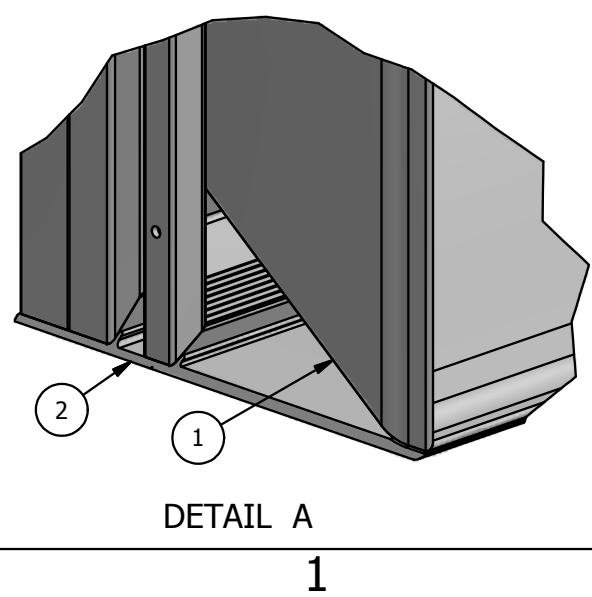
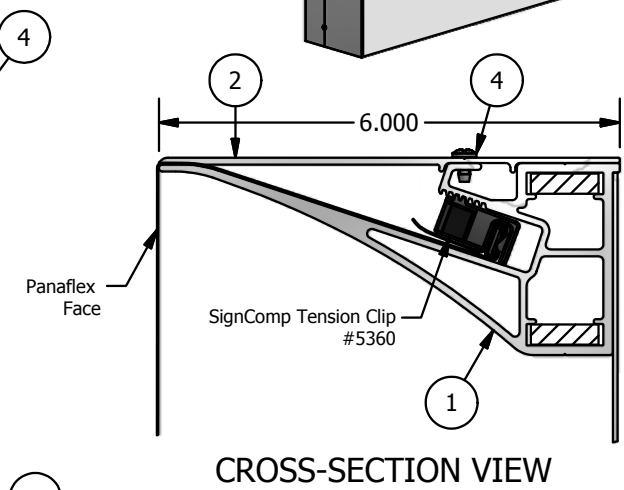
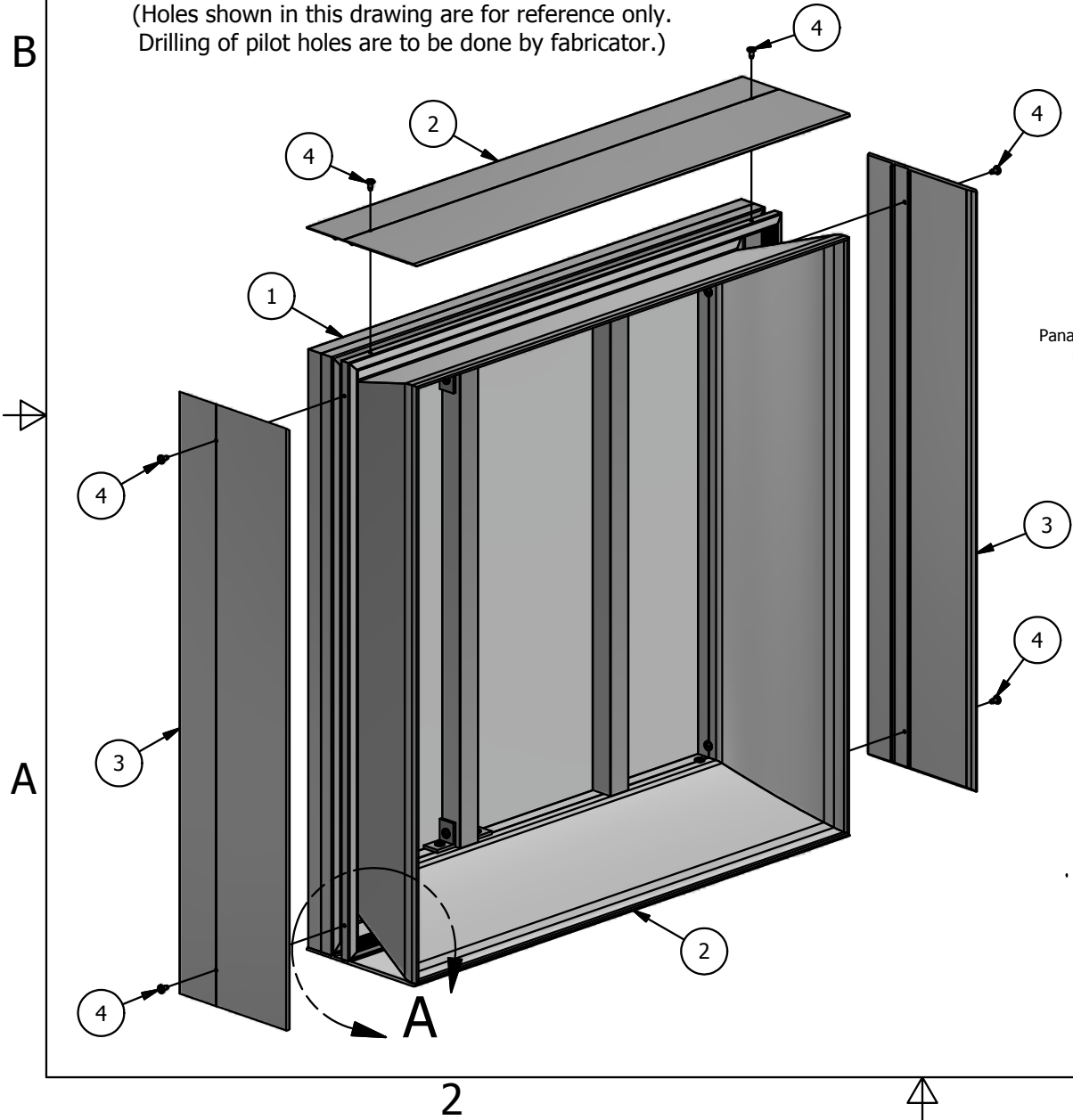


## PARTS LIST

ITEM	PART #	DESCRIPTION	NOTES
1	K2233	6in Flat Bleed Single Face Tension Body	Assembly
2	2238	6in Flat Bleed Single Face Tension Cover	Top & Bottom
3	2238	6in Flat Bleed Single Face Tension Cover	Sides
4	5195	Cover Screw	Pre-drill 1/8" holes 24" o/c

**NOTE: PRE-CUT KITS ARE NOT PRE-DRILLED.**

(Holes shown in this drawing are for reference only.  
Drilling of pilot holes are to be done by fabricator.)



THIS DRAWING WAS CREATED AT NO CHARGE TO ASSIST YOU IN VISUALIZING OUR PROPOSAL. THE DRAWING HEREIN IS THE PROPERTY OF SIGNCOMP. PERMISSION TO COPY OR REVISE THIS DRAWING OR TO USE THIS DRAWING FOR PRODUCTION IS STRICTLY PROHIBITED AND CAN ONLY BE COPIED, REVISED OR USED FOR PRODUCTION WITH THE EXPRESSED WRITTEN PERMISSION OF SIGNCOMP.

Project Name:	6in Flat Bleed Single Face Tension Frame w/ Cover - Assembly
Sign Company:	SignComp
Part #:	K2233-30
Revision:	
Date:	8/19/2016
Sheet:	1 of 1
Size:	A
Drawing By:	SBreihof

2

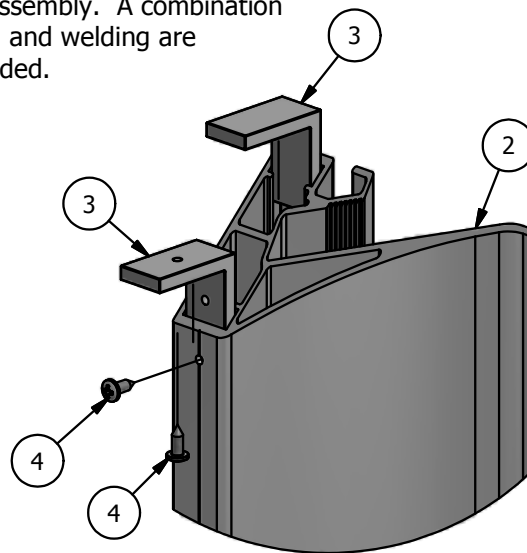


1

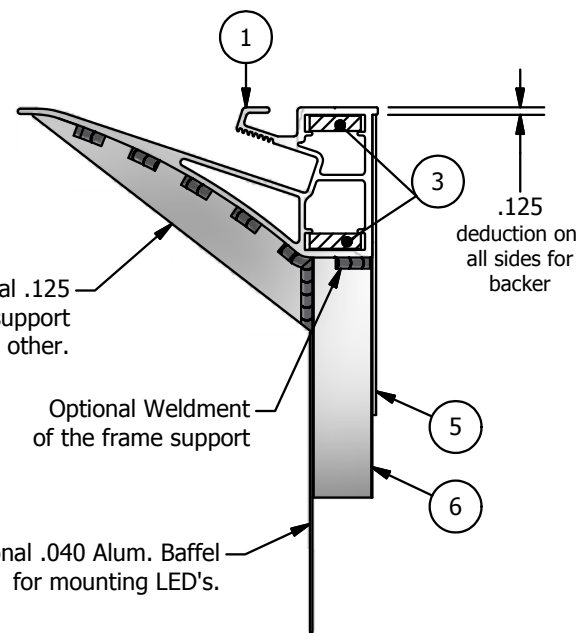
## PARTS LIST

ITEM	PART #	DESCRIPTION	NOTES
1	2233	6in Flat Bleed Single Face Tension Body	Top & Bottom
2	2233	6in Flat Bleed Single Face Tension Body	Sides
3	5320	Frame Corner Angle	Two (2) per corner
4	5218	Corner Angle Screw	Pre-drill 5/32" pilot hole
5		.060 Aluminum Back	By Other
6		1" x 1" Sq Tube Support	SignComp #2177 optional
7		1" x 1" x 3/4" - 1/8" Angle	Provided by Other

**NOTE:** This Body is designed for welded, bonded or mechanically fastened assembly. A combination of bonding and welding are recommended.



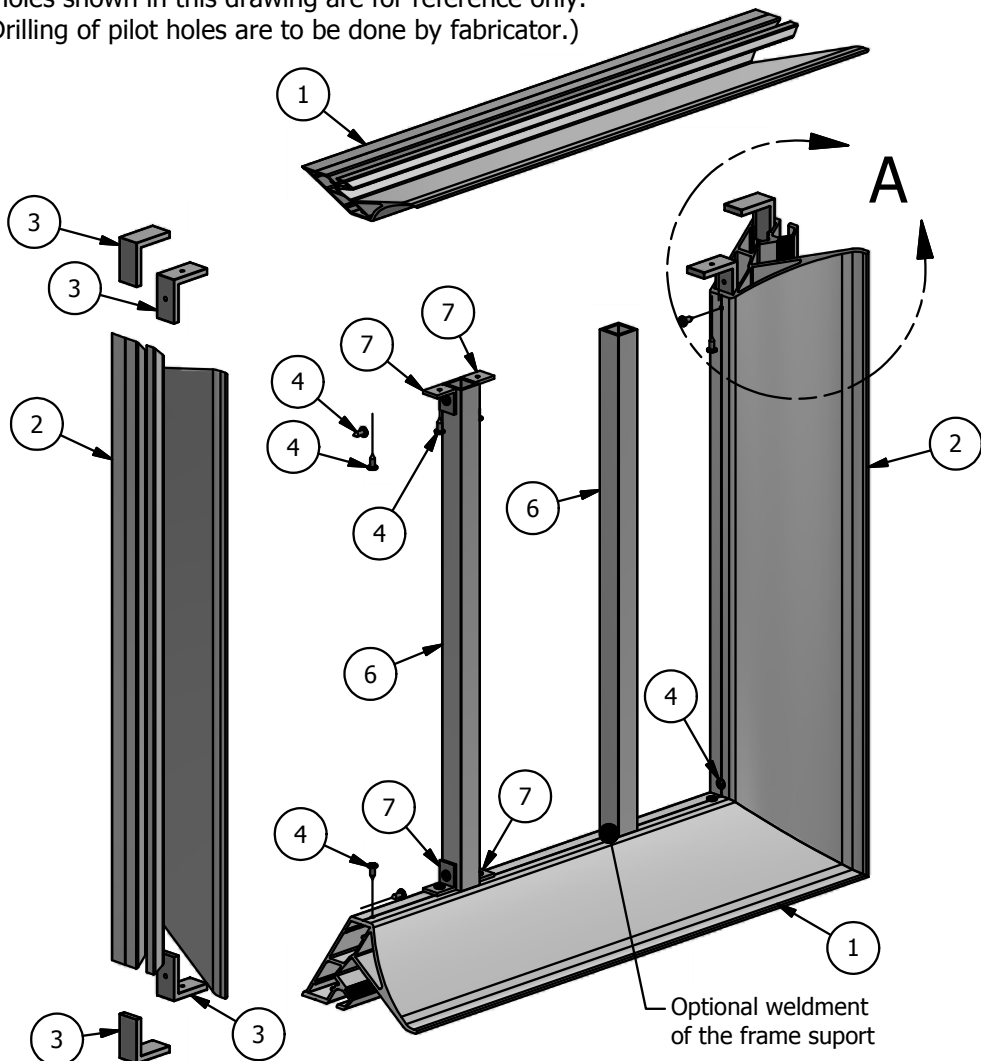
DETAIL A



CROSS-SECTION  
with optional support rib

**NOTE: PRE-CUT KITS ARE NOT PRE-DRILLED.**

(Holes shown in this drawing are for reference only.  
Drilling of pilot holes are to be done by fabricator.)



THIS DRAWING WAS CREATED AT NO CHARGE TO ASSIST YOU IN VISUALIZING OUR PROPOSAL. THE DRAWING HEREIN IS THE PROPERTY OF SIGNCOMP. PERMISSION TO COPY OR REVISE THIS DRAWING OR TO USE THIS DRAWING FOR PRODUCTION IS STRICTLY PROHIBITED AND CAN ONLY BE COPIED, REVISED OR USED FOR PRODUCTION WITH THE EXPRESSED WRITTEN PERMISSION OF SIGNCOMP.

Project Name: 6in Flat Bleed Single Face Tension Body - Assembly

Sign Company:

Part #: K2233

Revision:

Date: 8/18/2016

Drawing By: SBreihof

Sheet: 1 of 1

Size:

**SignComp**

B

B

A

A

2



1