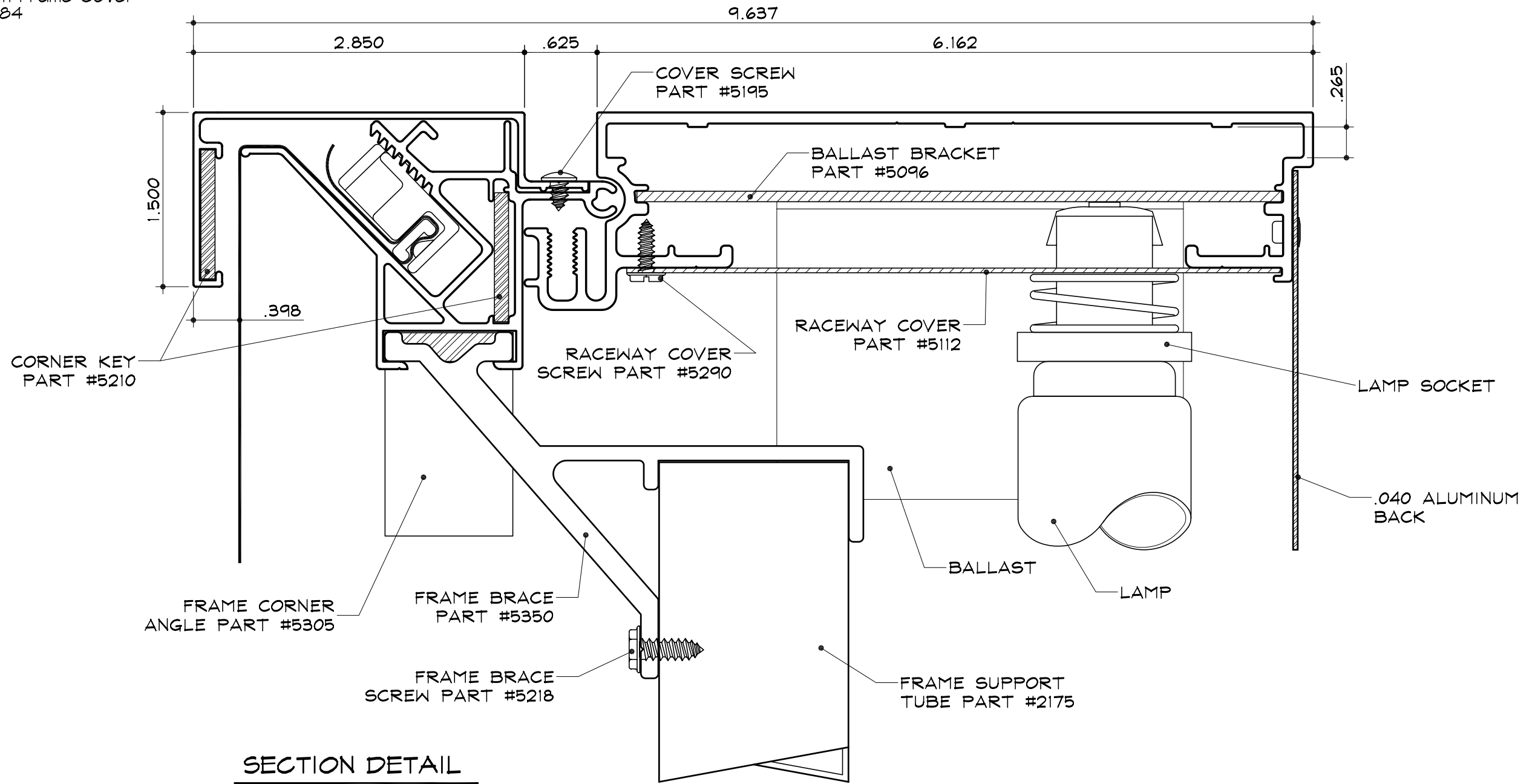


SC-6 for Flex Faces - Electrical

Single Face Body
 Part #2025

Tension Frame
 Part #2085

1/2" Tension Frame Cover
 Part #2084



SECTION DETAIL

SCALE : 1" = 1"

NOTES:

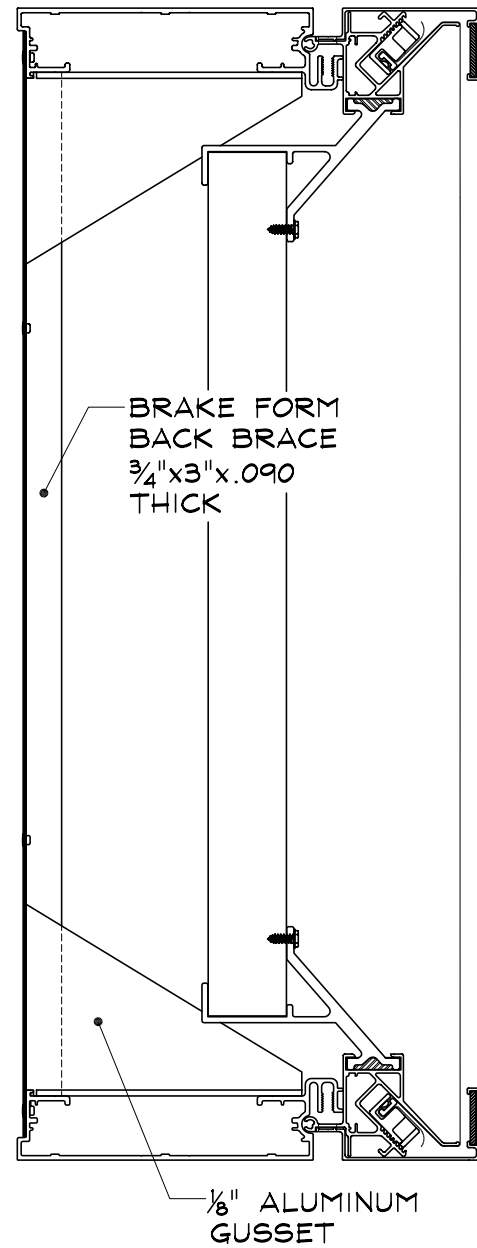
1. Add 1" to size of cabinet (vertical or horizontal) when the size of the cabinet is the same as the nominal lamp length.
2. SignComp does not supply the Ballast(s), Lamps, Lamp Sockets or the .040 Aluminum Back.

SC-6 for Flex Faces - Structural

Single Face Body
 Part #2025

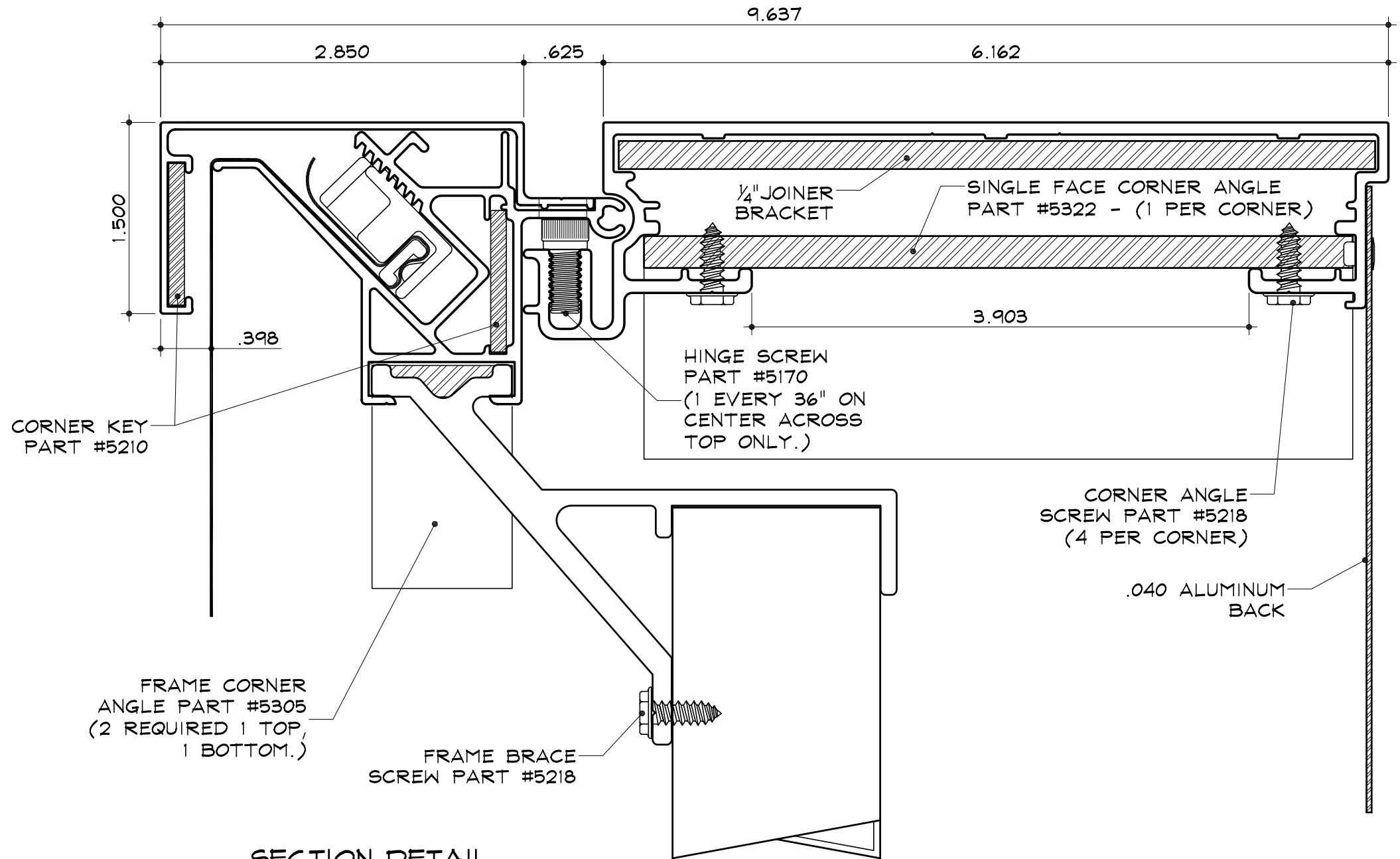
Tension Frame
 Part #2085

1/2" Tension Frame Cover
 Part #2084



FULL SECTION

SCALE : 3" = 1"



SECTION DETAIL

SCALE : 1" = 1"

NOTES:

1. Add 1" to size of cabinet (vertical or horizontal) when the size of the cabinet is the same as the nominal lamp length.
2. SignComp does not supply the Material for Gussets, 1/4" Joiner Bracket, or .040 Aluminum Back.

