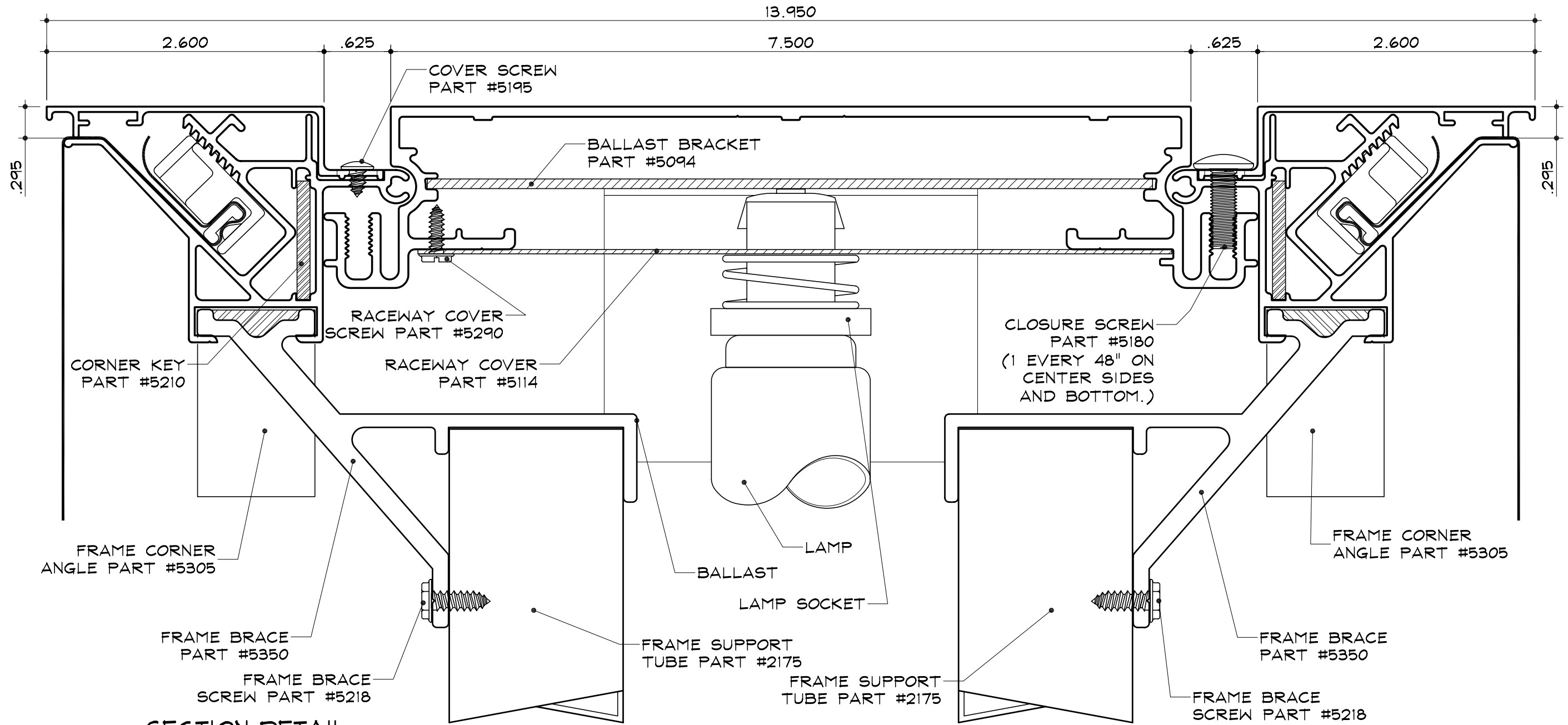


SC-II for Flex Faces - Electrical

Medium Body
 Part #2015

Tension Frame
 Part #2085

Bleed Tension Frame Cover
 Part #2095



SECTION DETAIL

SCALE : 1" = 1"

NOTES:

1. Add 1" to size of cabinet (vertical or horizontal) when the size of the cabinet is the same as the nominal lamp length.

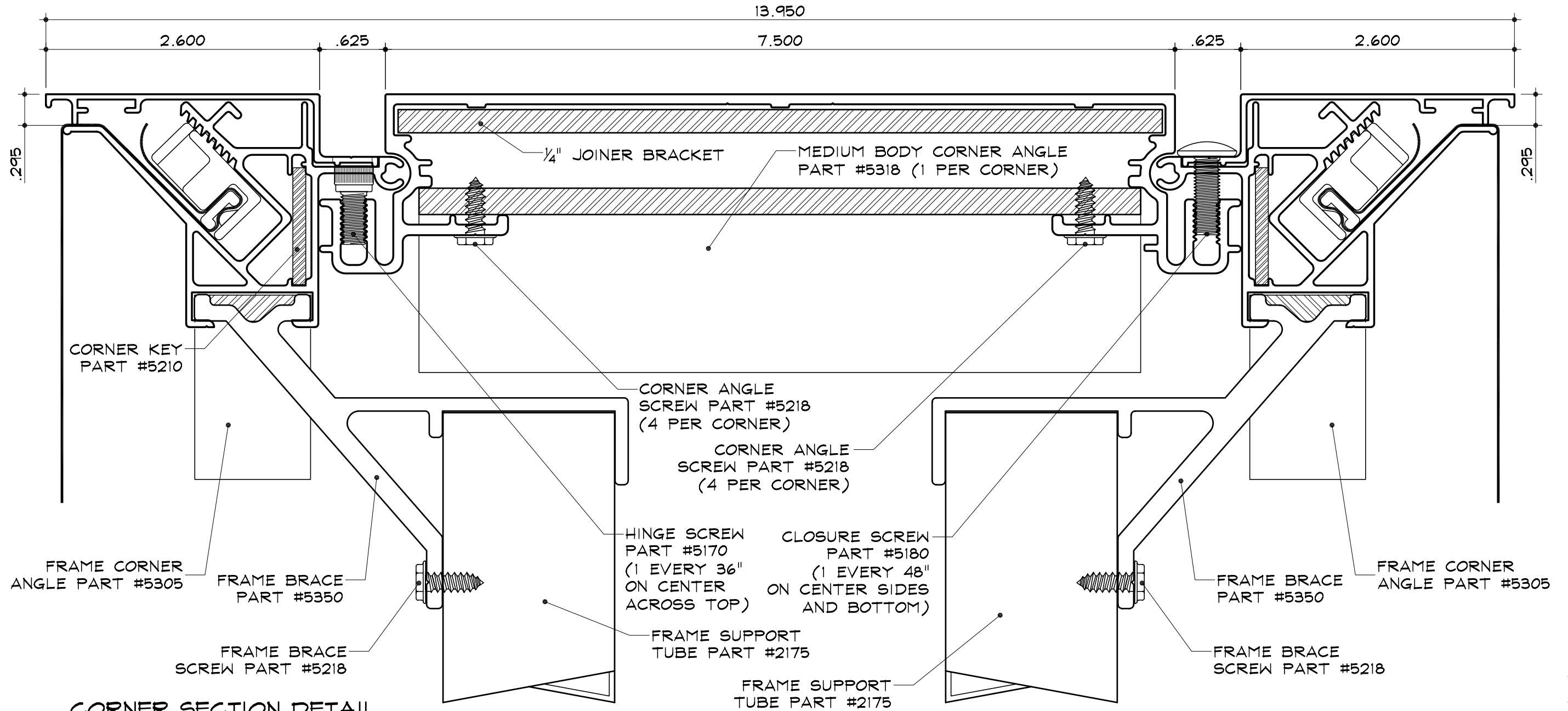
2. SignComp does not supply the Ballast(s), Lamps, or Lamp Sockets.

SC-11 for Flex Faces - Structural (Corner)

Medium Body
Part #2015

Tension Frame
Part #2085

Bleed Tension Frame Cover
Part #2095

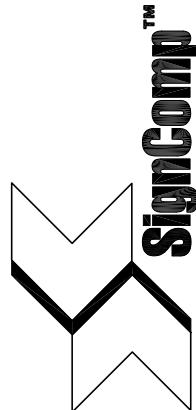


CORNER SECTION DETAIL

SCALE : 1" = 1"

NOTES:

1. Add 1" to size of cabinet (vertical or horizontal) when the size of the cabinet is the same as the nominal lamp length.
2. SignComp does not supply the 1/4" Joiner Bracket.

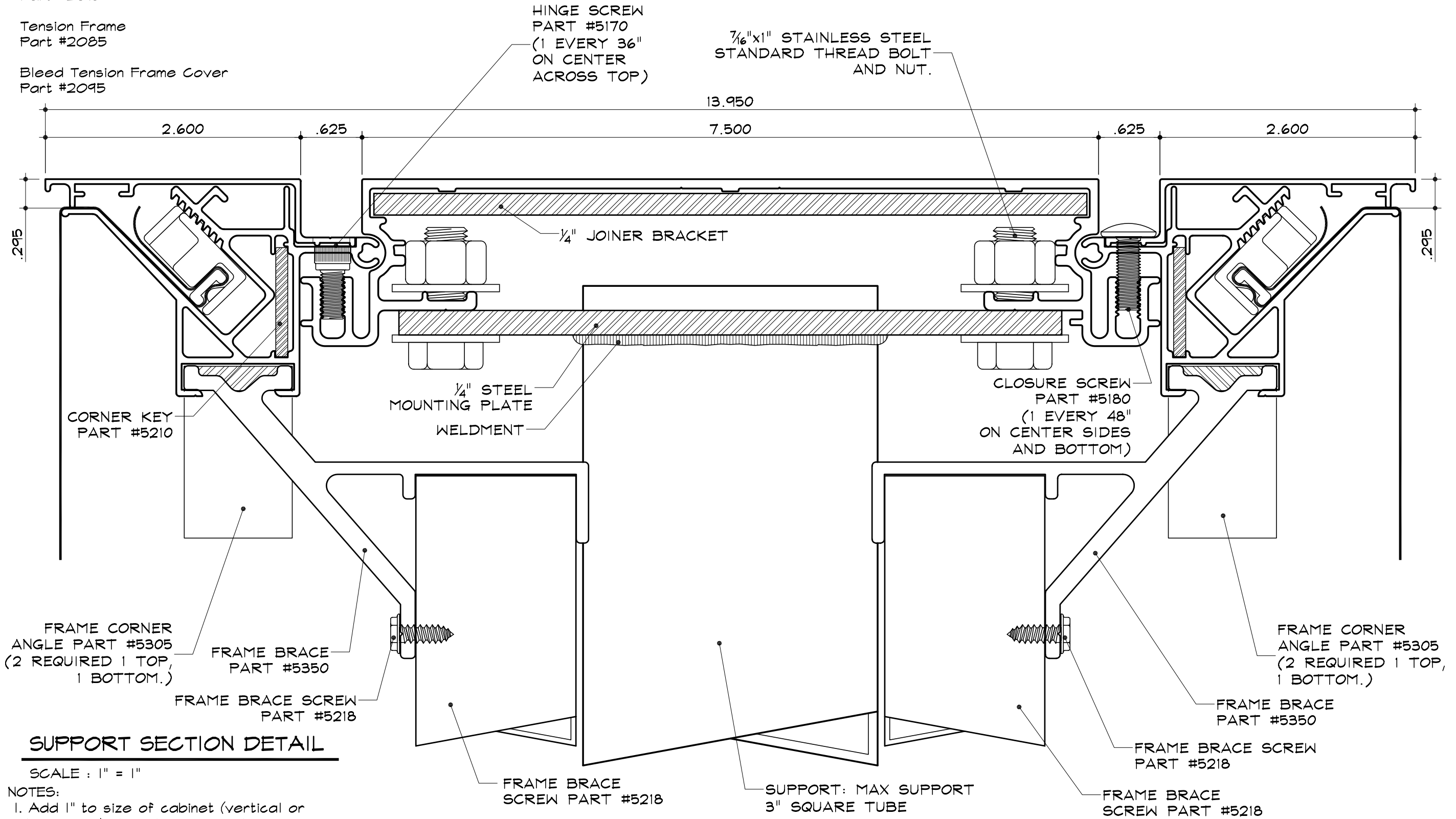


SC-11 for Flex Faces - Structural (Support)

Medium Body
 Part #2015

Tension Frame
 Part #2085

Bleed Tension Frame Cover
 Part #2095



SUPPORT SECTION DETAIL

SCALE : 1" = 1"

NOTES:

1. Add 1" to size of cabinet (vertical or horizontal) when the size of the cabinet is the same as the nominal lamp length.
2. SignComp does not supply the 1/4" Joiner Bracket, 1/4" Mounting Plate, 7/16" Mounting bolts or Support.
3. Max support size to be used 3" Square Tube.

****NOTE:****

FRAME BRACES AND SUPPORT TUBES SHOULD NOT BE PLACE IN FRONT OF SUPPORT TUBE OR PIPE.