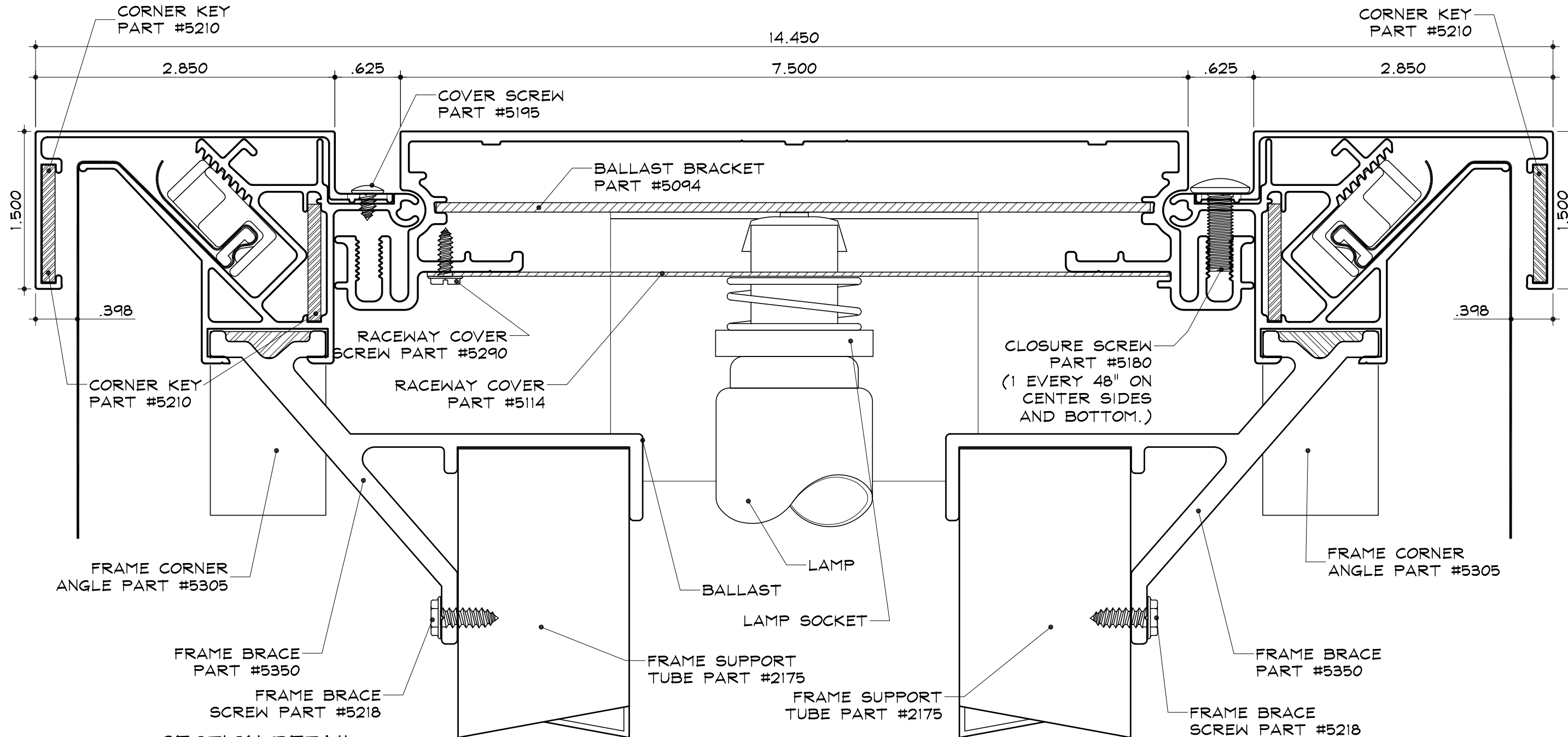


SC-12 for Flex Faces - Electrical

Medium Body  
 Part #2015

Tension Frame  
 Part #2085

1/2" Tension Frame Cover  
 Part #2084

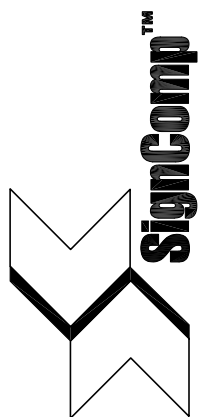


**SECTION DETAIL**

SCALE : 1" = 1"

NOTES:

1. Add 1" to size of cabinet (vertical or horizontal) when the size of the cabinet is the same as the nominal lamp length.
2. SignComp does not supply the Ballast(s), Lamps, or Lamp Sockets.

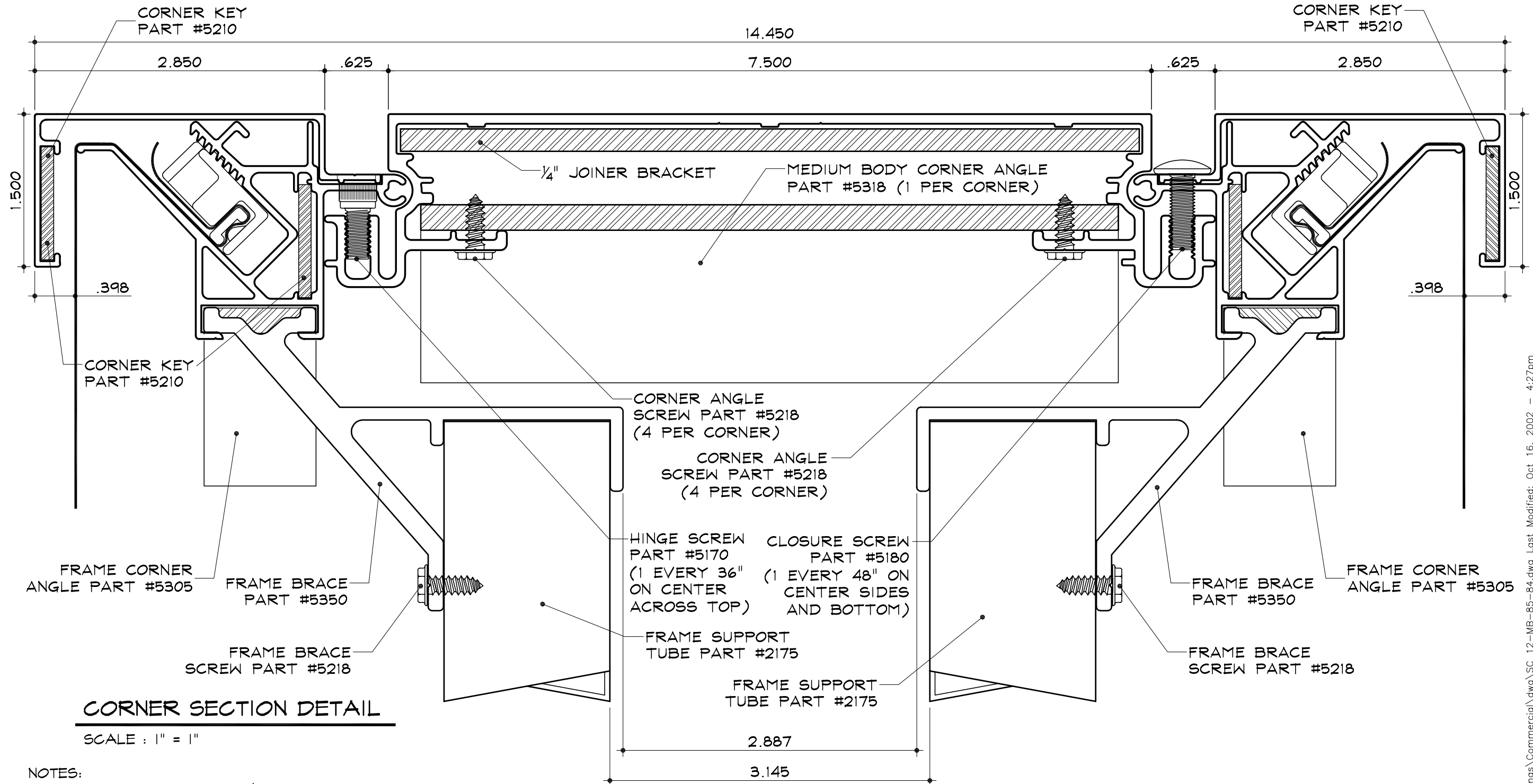


SC-12 for Flex Faces - Structural (Corner)

Medium Body  
 Part #2015

Tension Frame  
 Part #2085

1/2" Tension Frame Cover  
 Part #2084



**CORNER SECTION DETAIL**

SCALE : 1" = 1"

**NOTES:**

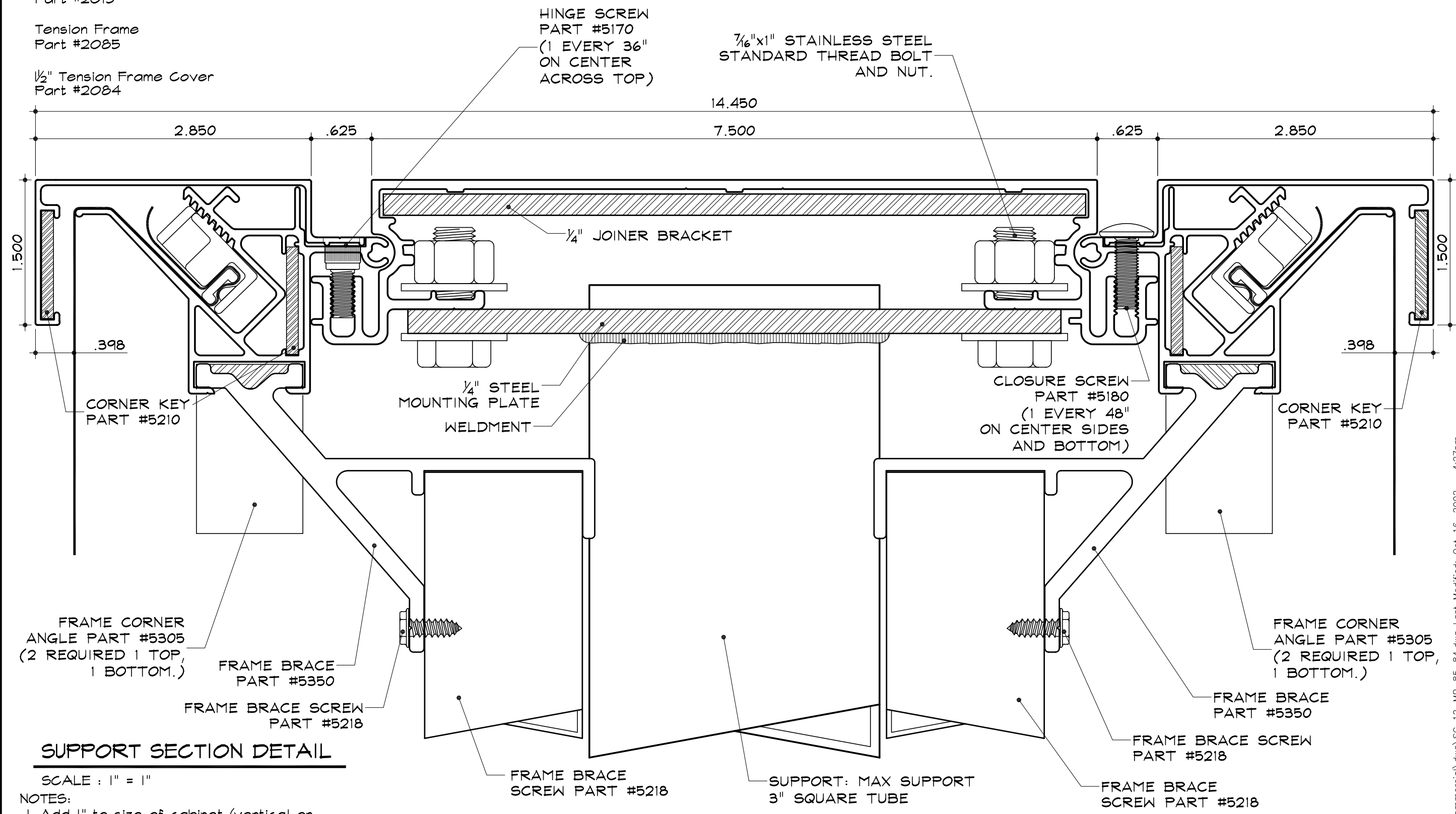
1. Add 1" to size of cabinet (vertical or horizontal) when the size of the cabinet is the same as the nominal lamp length.
2. SignComp does not supply the 1/4" Joiner Bracket.

SC-12 for Flex Faces - Structural (Support)

Medium Body  
Part #2015

Tension Frame  
Part #2085

1/2" Tension Frame Cover  
Part #2084



**SUPPORT SECTION DETAIL**

SCALE : 1" = 1"

NOTES:

1. Add 1" to size of cabinet (vertical or horizontal) when the size of the cabinet is the same as the nominal lamp length.
2. SignComp does not supply the 1/4" Joiner Bracket, 1/4" Mounting Plate, 7/16" Mounting bolts or Support.
3. Max support size to be used 3" Square Tube.

**\*\*NOTE:\*\***  
 FRAME BRACES AND SUPPORT TUBES SHOULD NOT BE PLACE IN FRONT OF SUPPORT TUBE OR PIPE.

