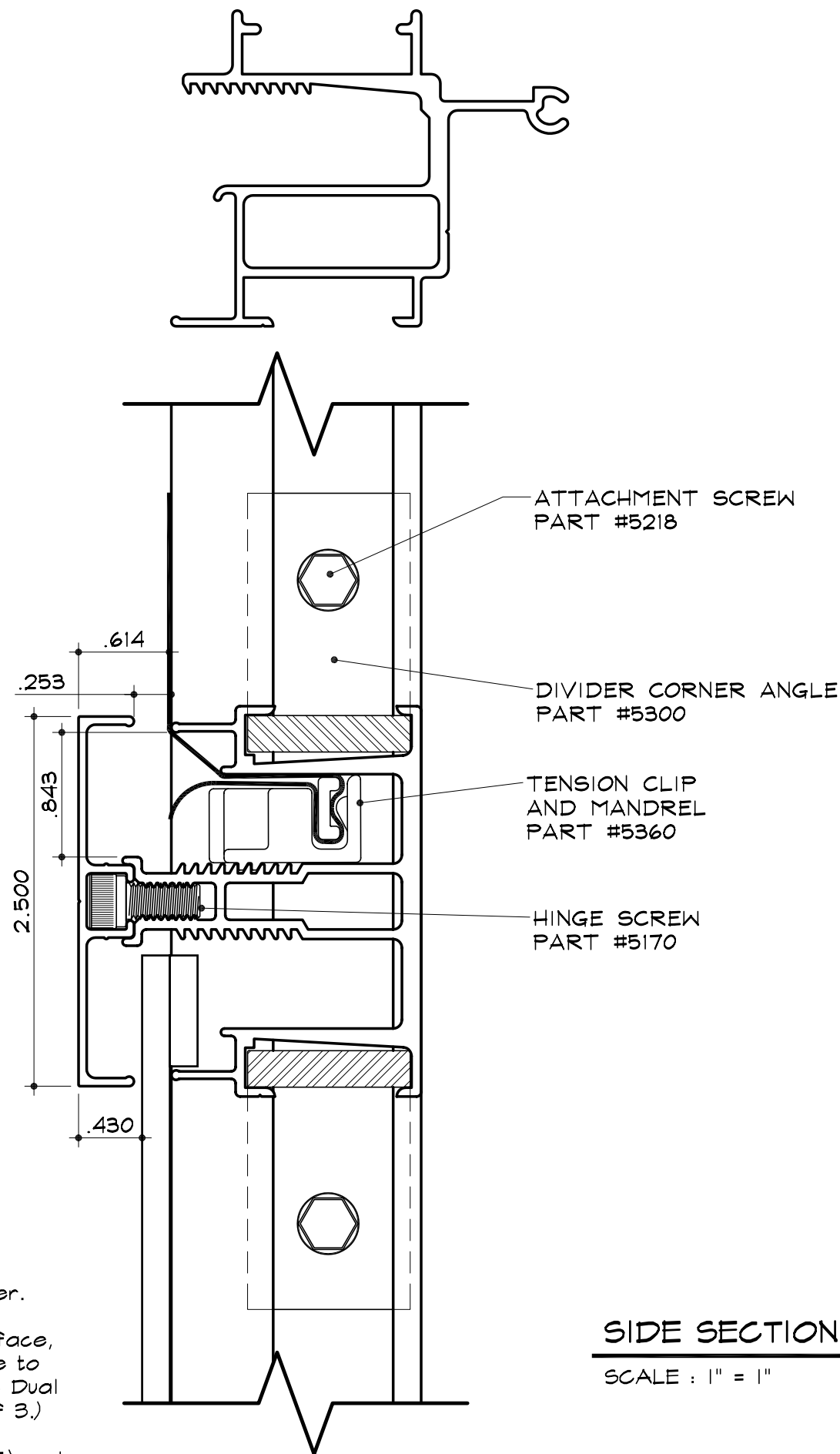


SC-38 for Flex/Rigid Faces.

Dual Divider
Part #2142

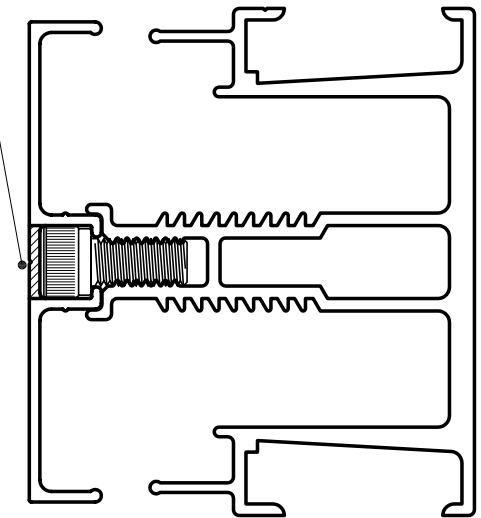
Dual Divider Cover
Part #2146



SIDE SECTION

SCALE : 1" = 1"

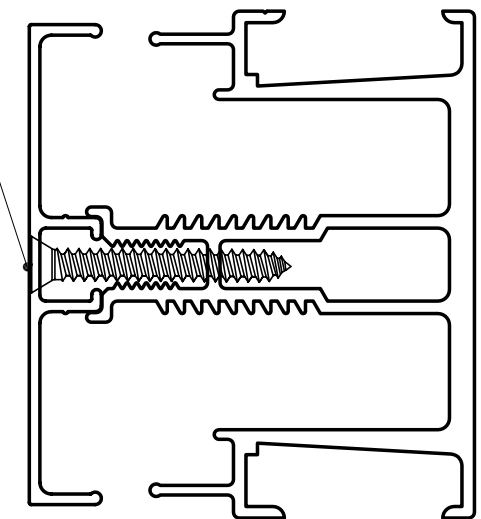
DRILL $\frac{3}{8}$ " HOLE EVERY
36" ON CENTER FOR
INERTION OF HINGE SCREW
TO FASTEN COVER.



OPTION "B" COVER ATTACHMENT

SCALE : 1" = 1"

#8x $\frac{1}{4}$ " COUNTER
SUNK SCREW

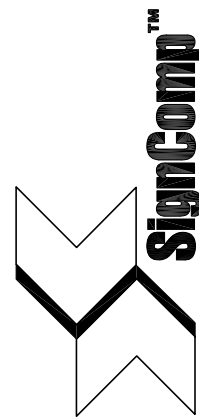


OPTION "C" COVER ATTACHMENT

SCALE : 1" = 1"

NOTES:

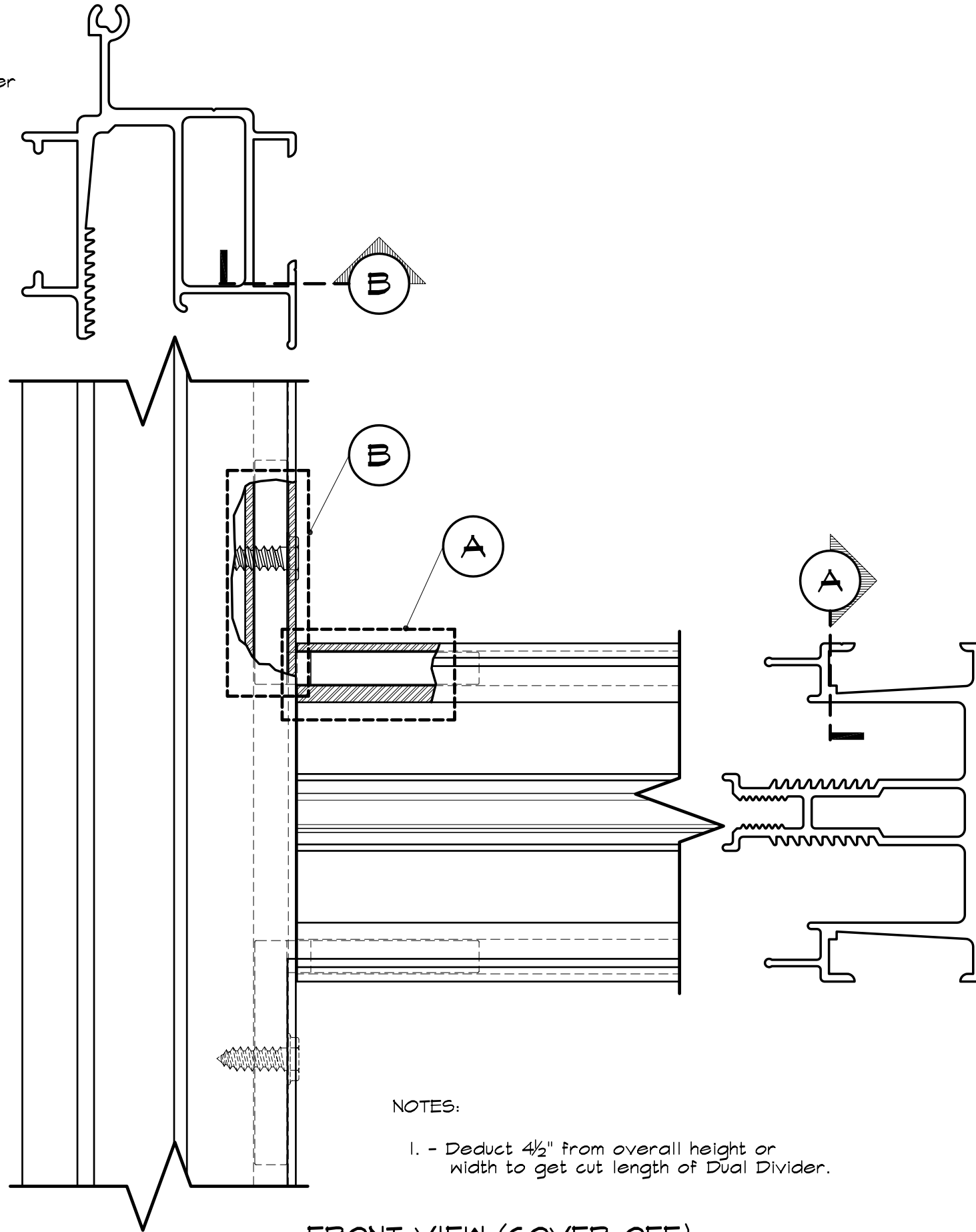
1. - Deduct $4\frac{1}{2}$ " from overall height or width to get cut length of Dual Divider.
2. - When using Dual Divider for flexible face, cut away a portion of the Dual Frame to facilitate a smooth transition into the Dual Frame. (See Detail "A" on sheet 2 of 3.)
3. - For use with Dual Frame (Part #2065) and 2" Retro (Part #2105) ONLY.



SC-38 for Flex/Rigid Faces

Dual Divider
Part #2142

Dual Divider Cover
Part #2146

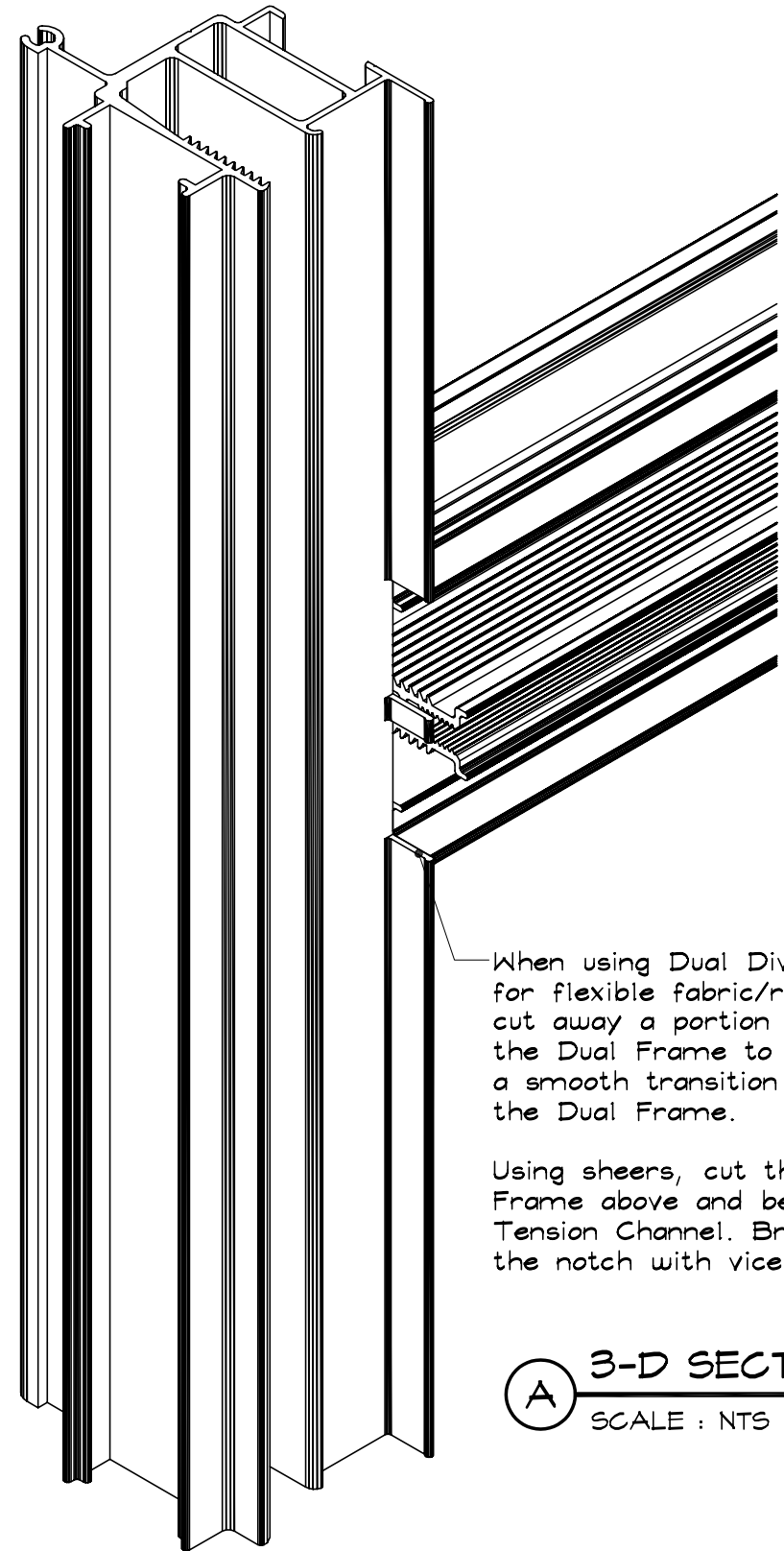


NOTES:

- 1. - Deduct 4½" from overall height or width to get cut length of Dual Divider.

FRONT VIEW (COVER OFF)

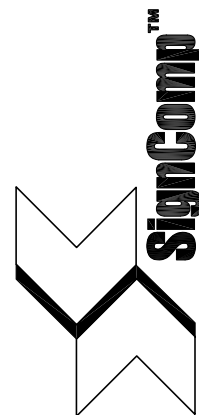
SCALE : 1" = 1"



When using Dual Divider for flexible fabric/rigid faces, cut away a portion of the Dual Frame to facilitate a smooth transition into the Dual Frame.

Using sheers, cut the Dual Frame above and below the Tension Channel. Break away the notch with vice grips.

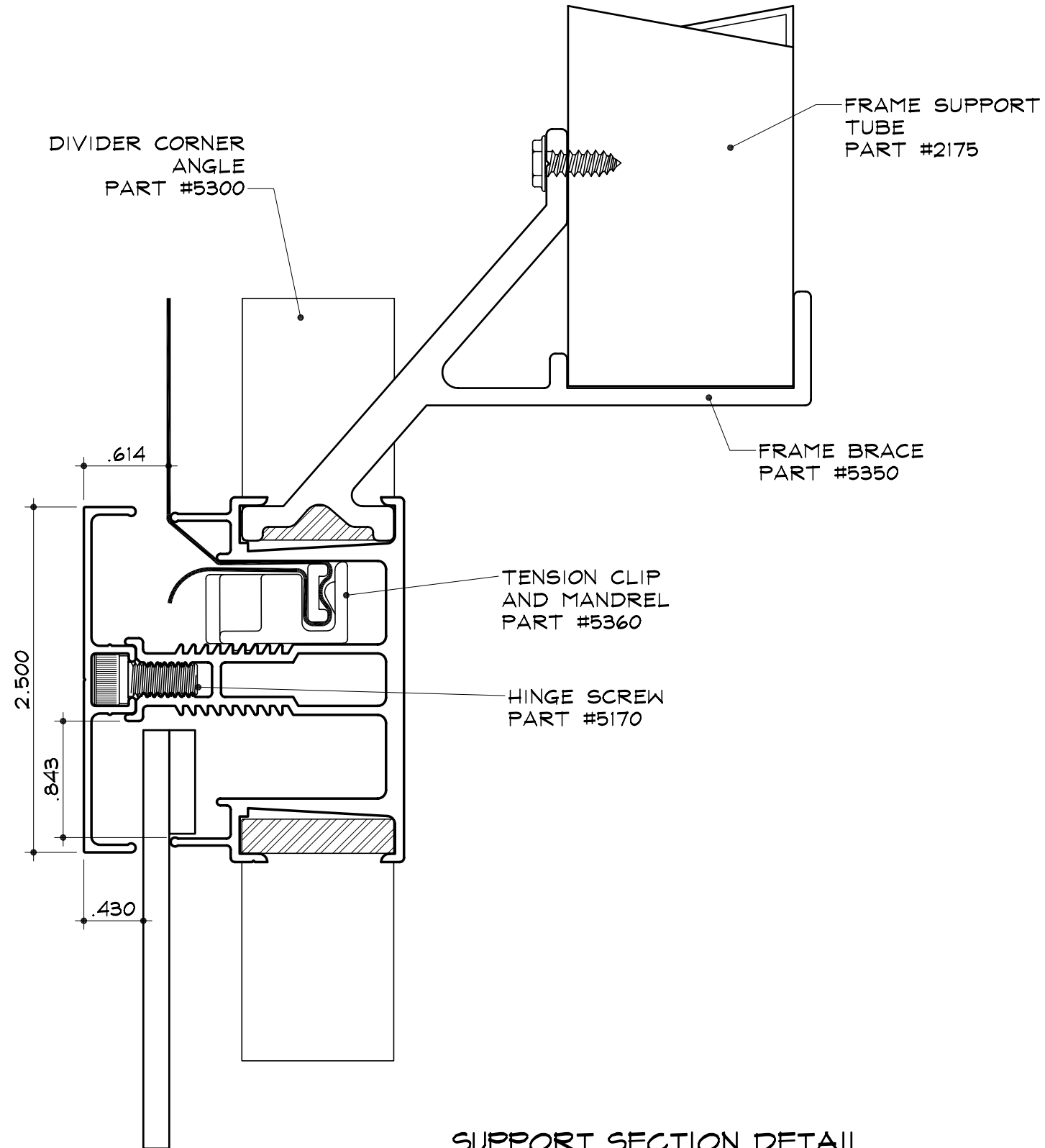
A 3-D SECTION
SCALE : NTS



SC-38 for Flex/Rigid Faces

Dual Divider
Part #2142

Dual Divider Cover
Part #2146



NOTES:

1. - Deduct 4½" from overall height or width to get cut length of Dual Divider.
2. - When using Dual Divider for flexible/rigid face, cut away a portion of the Dual Frame to facilitate a smooth transition into the Dual Frame. (See Detail "A" on sheet 2 of 3.)

SUPPORT SECTION DETAIL

SCALE : 1" = 1"