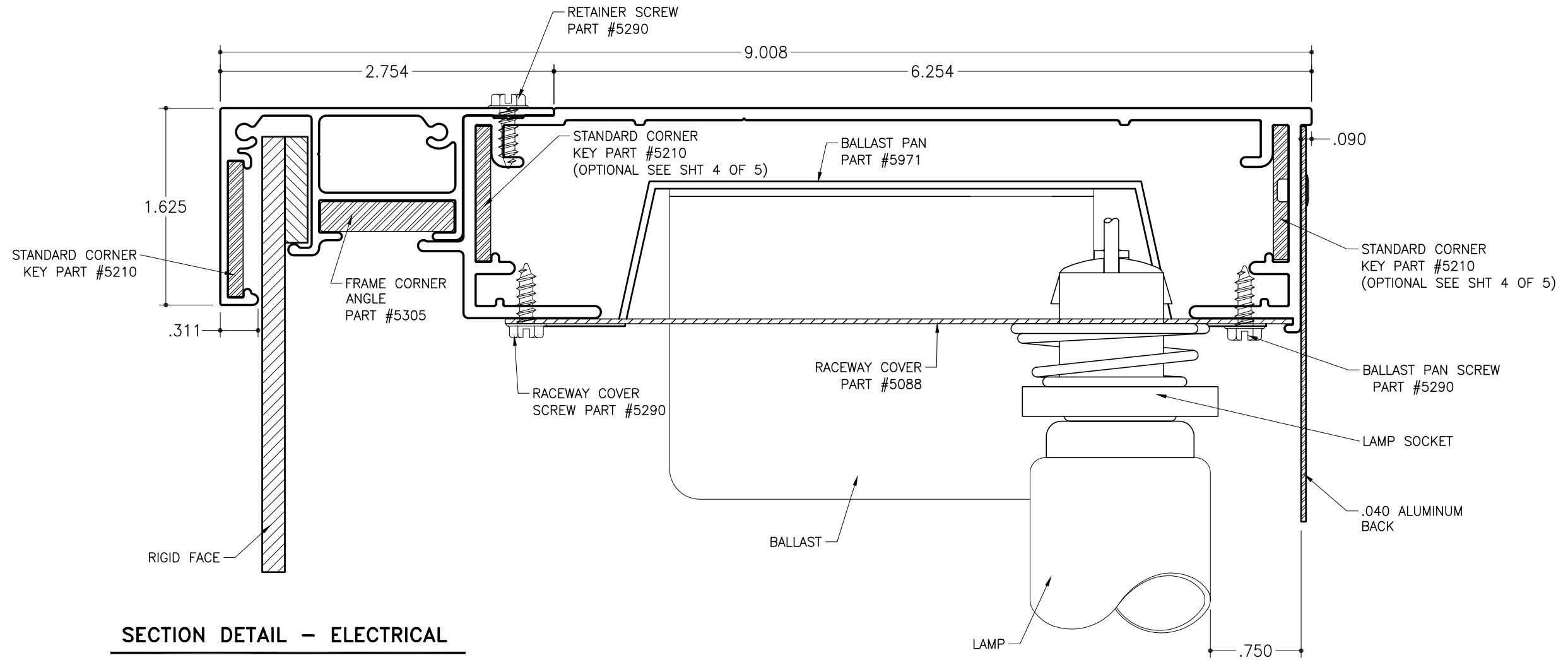


STD-11 for Rigid Faces - Electrical

2Part Single Face Body
Part #1927

2Part Extended Retainer
Part #1940



SECTION DETAIL - ELECTRICAL

SCALE : 1" = 1"

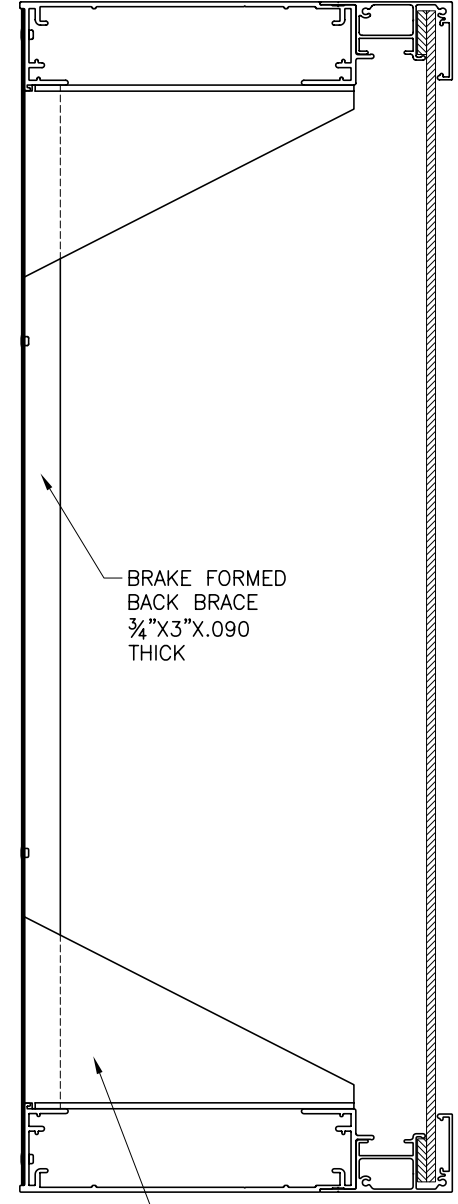
NOTES:

1. Add 1½" to 1¾" to the overall width or height of cabinet depending on which direction the lamps will be placed. (vertical or horizontal)
2. SignComp does not supply the ballast(s), lamps or lamp sockets.

STD-11 for Rigid Faces – Structural Corner

2Part Single Face 8" Body
Part #1927

2Part Extended Retainer
Part #1940



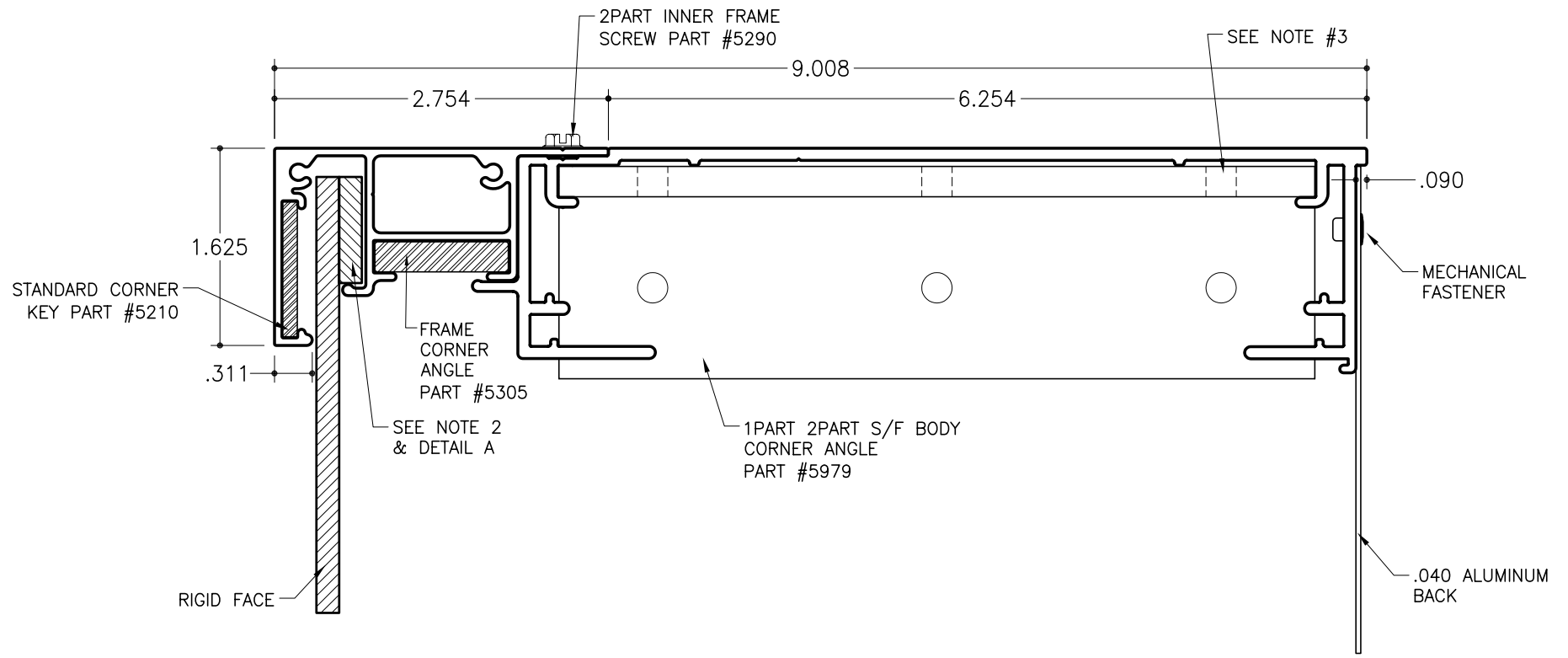
BRAKE FORMED
BACK BRACE
3/4"X3"X.090
THICK

.125 FABRICATED
ALUMINUM GUSSET

FULL SECTION

SCALE : 3" = 1"

NOTE:
SignComp does not supply
the gussets or back braces.

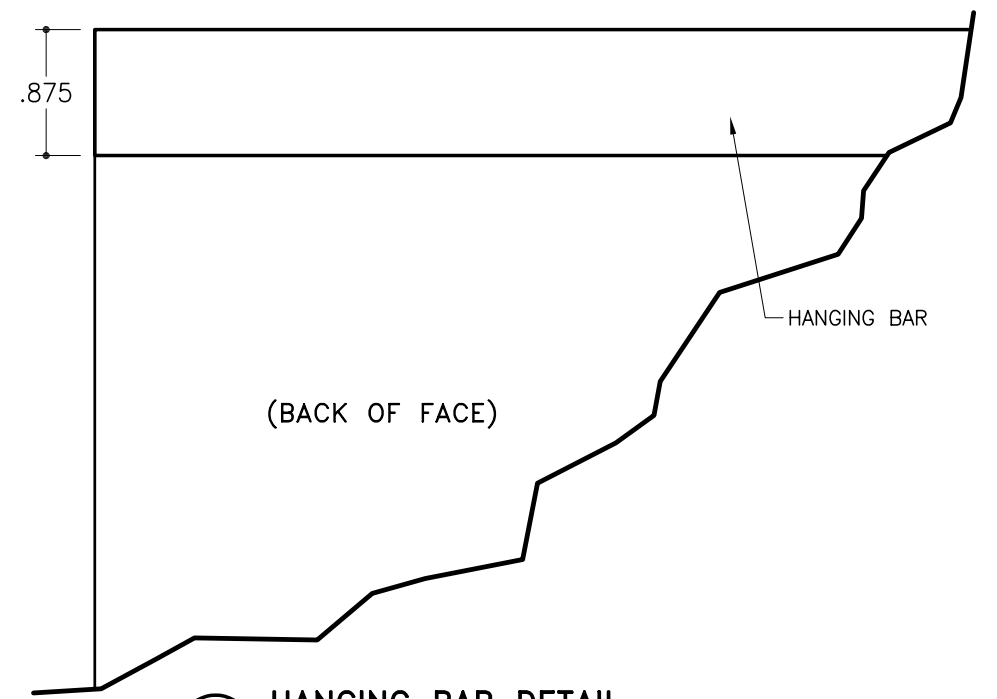


SECTION DETAIL STRUCTURAL (BODY CORNER ANGLE W/ADHESIVE BOND)

SCALE : 3/4" = 1"

NOTES:

1. Add 1 1/2" to 1 3/4" to the overall width or height of cabinet depending on which direction the lamps will be placed. (vertical or horizontal)
2. Hanging bar to be attached to back side of face. Attach hanging bar using mechanical fasteners or adhesive. (SEE DETAIL "A")
3. Holes located in corner angles are adhesive injection points.



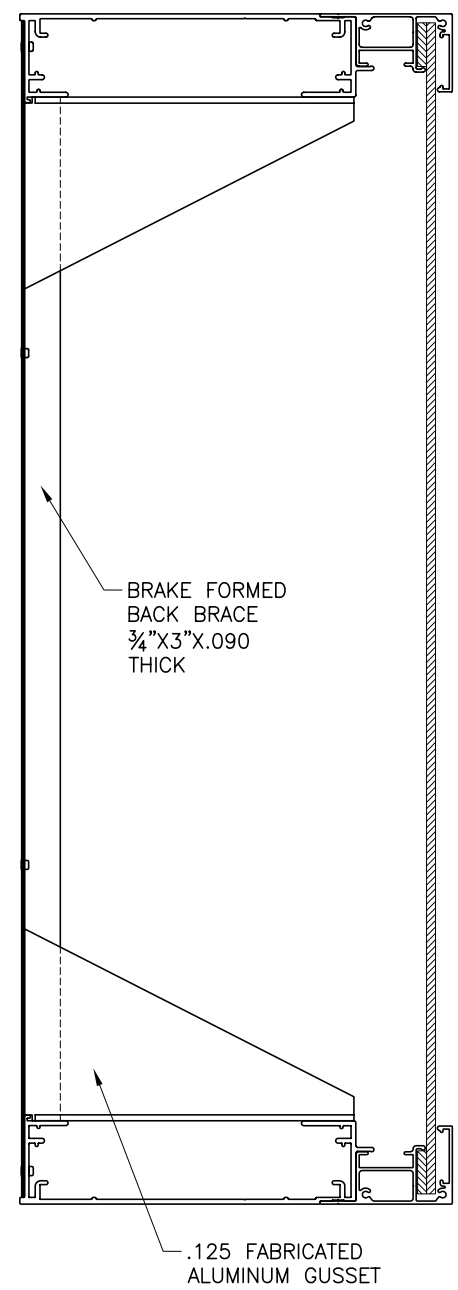
A HANGING BAR DETAIL

SCALE : 3/4" = 1"

STD-11 for Rigid Faces – Structural Corner

2Part Single Face 8" Body
Part #1927

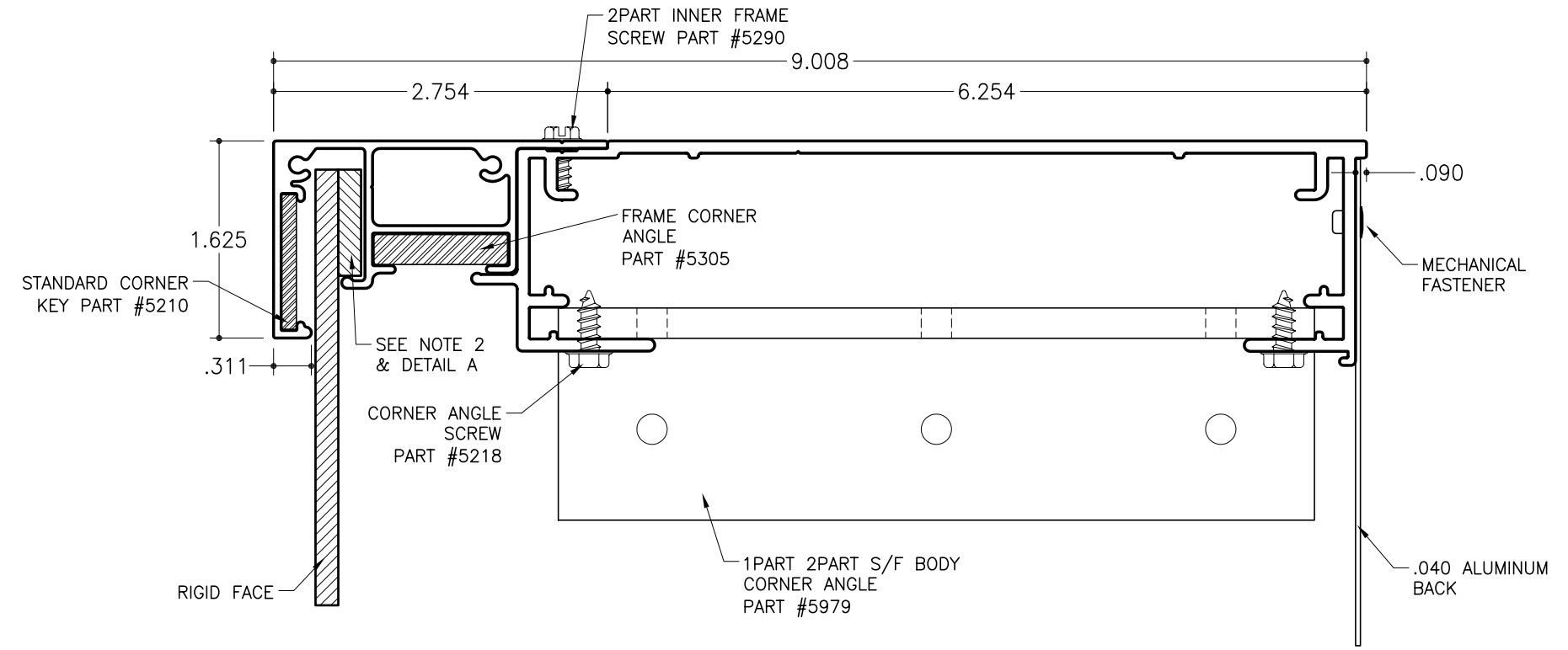
2Part Extended Retainer
Part #1940



FULL SECTION

SCALE : 3" = 1"

NOTE:
SignComp does not supply the gussets or back braces.

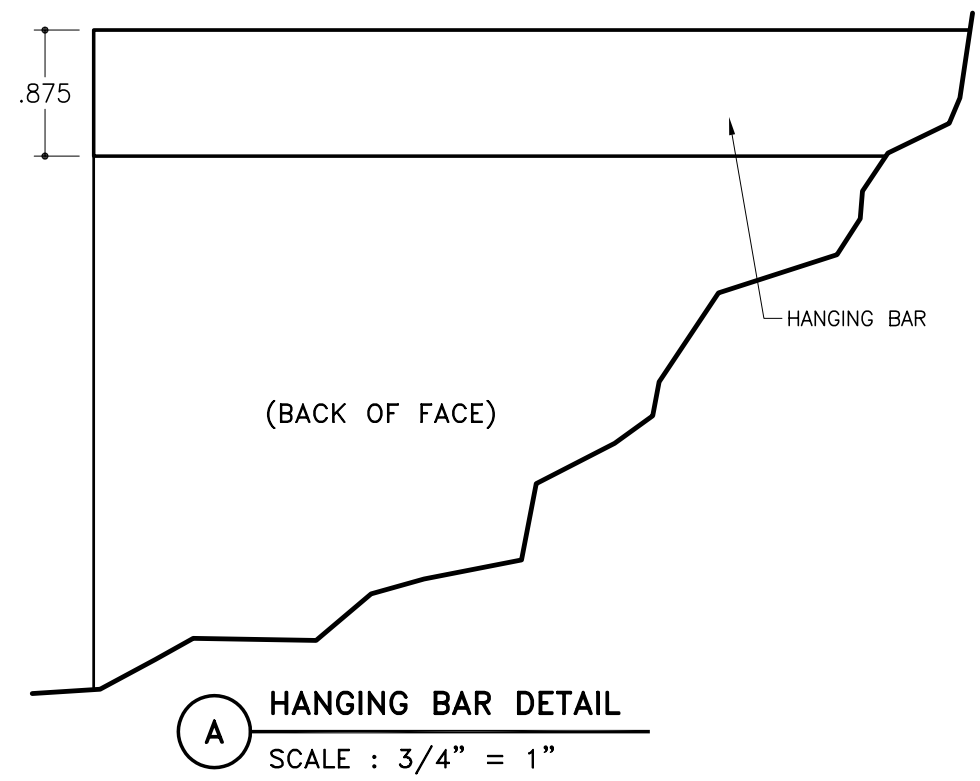


SECTION DETAIL STRUCTURAL (BODY CORNER ANGLE MECHANICALLY FASTENED)

SCALE : 3/4" = 1"

NOTES:

1. Add 1/2" to 1 3/4" to the overall width or height of cabinet depending on which direction the lamps will be placed. (vertical or horizontal)
2. Hanging bar to be attached to back side of face. Attach hanging bar using mechanical fasteners or adhesive. (SEE DETAIL "A")



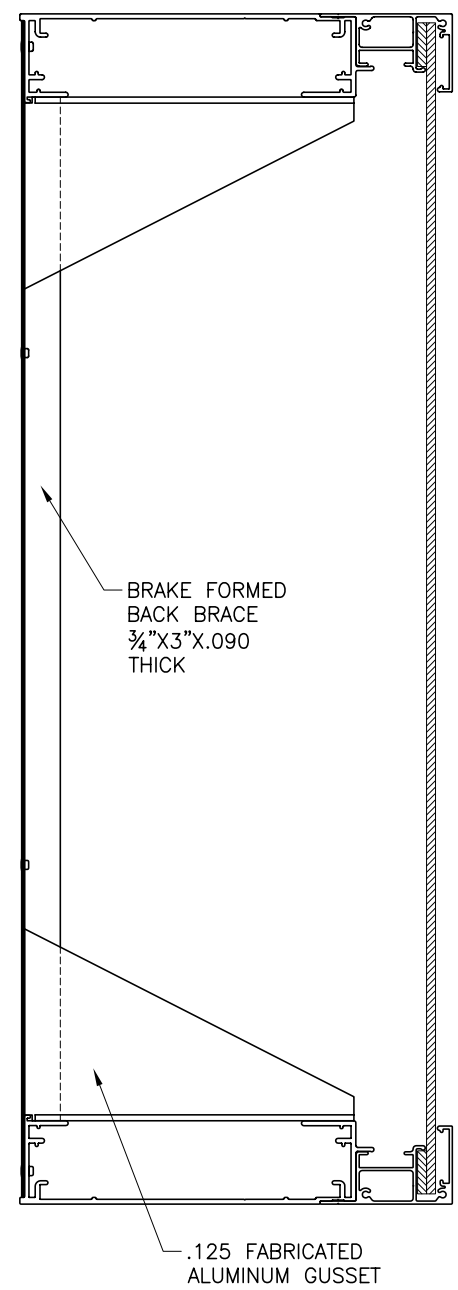
A HANGING BAR DETAIL

SCALE : 3/4" = 1"

STD-11 for Rigid Faces – Structural Corner

2Part Single Face 8" Body
Part #1927

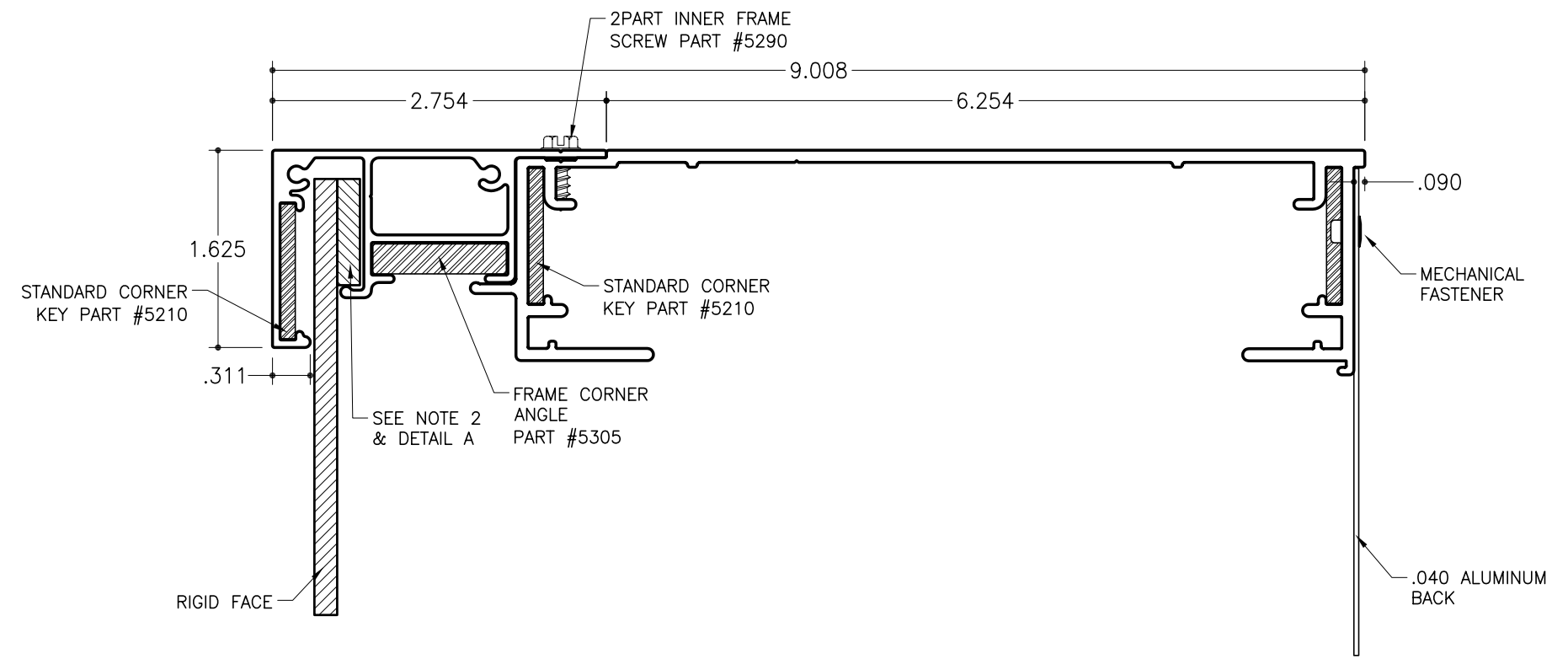
2Part Extended Retainer
Part #1940



FULL SECTION

SCALE : 3" = 1"

NOTE:
SignComp does not supply the gussets or back braces.

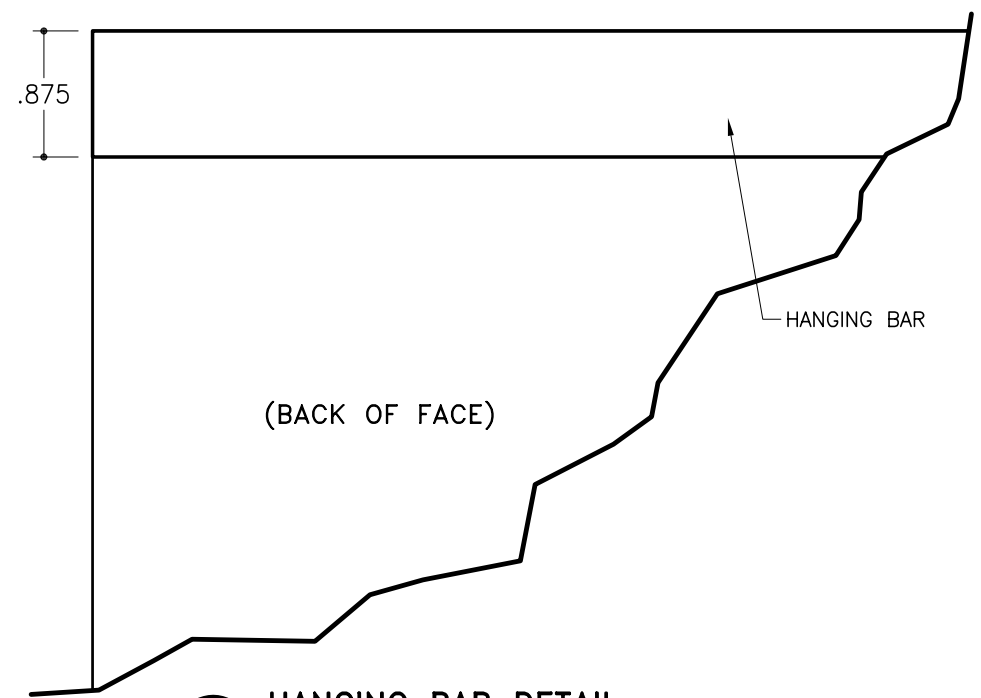


SECTION DETAIL STRUCTURAL (WELDED W/CORNER KEYS)

SCALE : 3/4" = 1"

NOTES:

1. Add 1 1/2" to 1 3/4" to the overall width or height of cabinet depending on which direction the lamps will be placed. (vertical or horizontal)
2. Hanging bar to be attached to back side of face. Attach hanging bar using mechanical fasteners or adhesive. (SEE DETAIL "A")



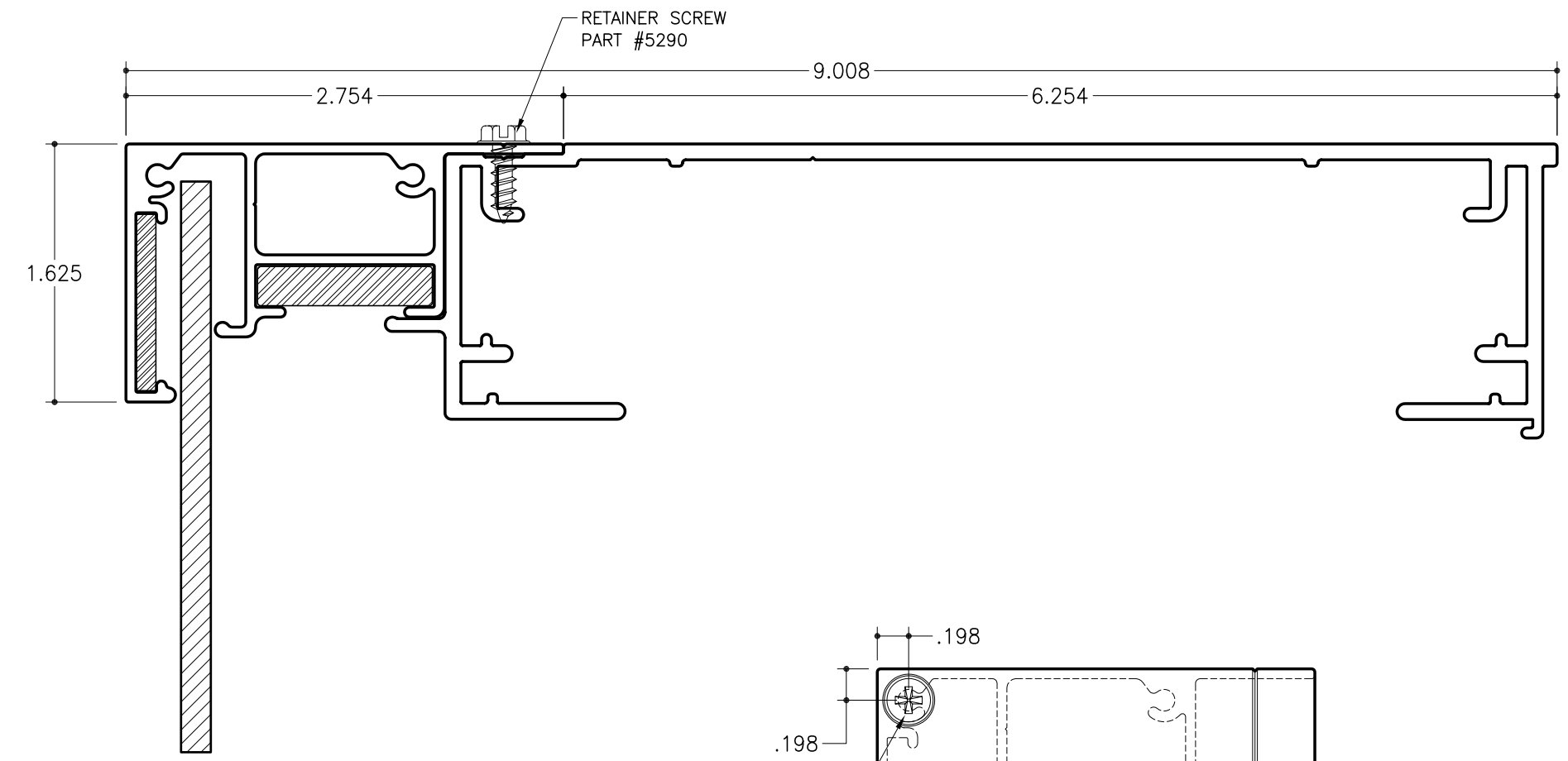
A HANGING BAR DETAIL

SCALE : 3/4" = 1"

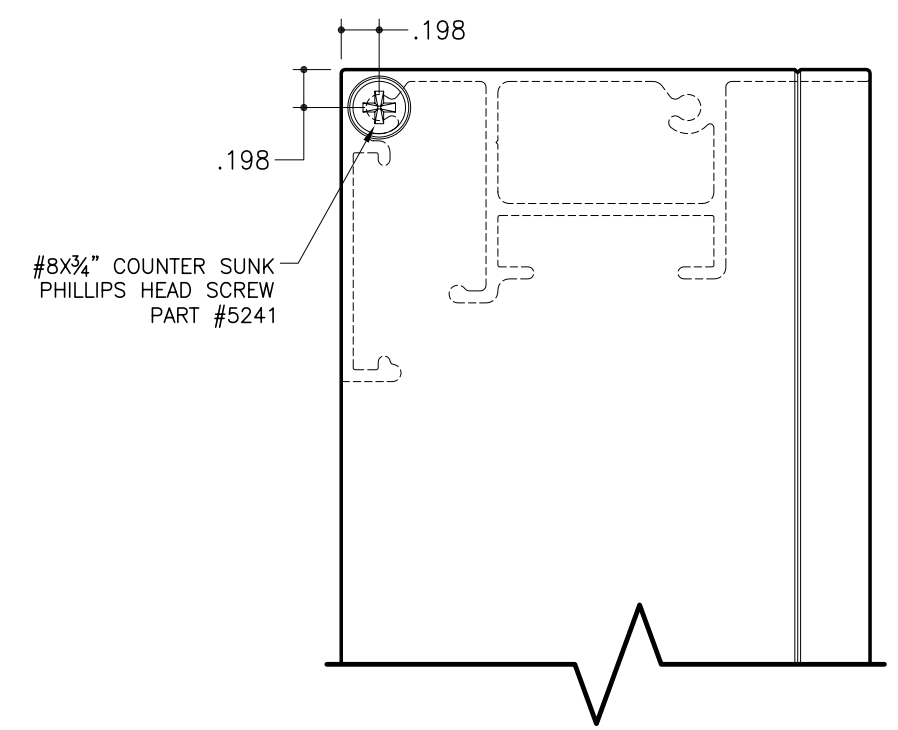
STD-11 for Rigid Faces - Side/End

2Part Single Face Body
Part #1927

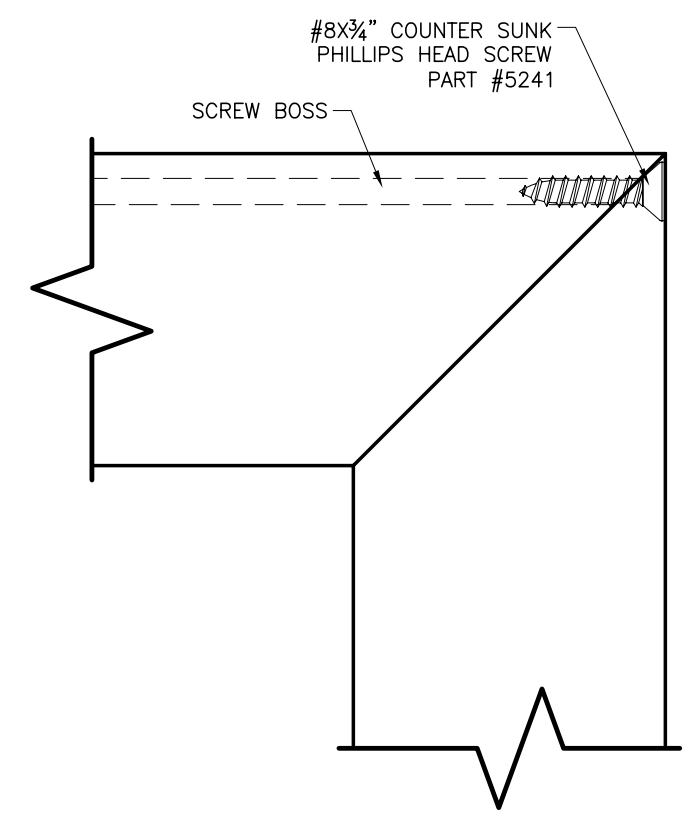
2Part Extended Retainer
Part #1940



SECTION DETAIL - SIDE
SCALE : 1" = 1"



A SIDE VIEW
SCALE : 1"=1"



B FACE VIEW
SCALE : 1"=1"

- NOTES:
1. Add 1½" to 1¾" to the overall width or height of cabinet depending on which direction the lamps will be placed. (vertical or horizontal)
 2. 2Part Extended Retainer has two (2) screw boss for fastening to insure a tight fit. Only the outside screw boss is used when it is attached to the 2Part bodies.