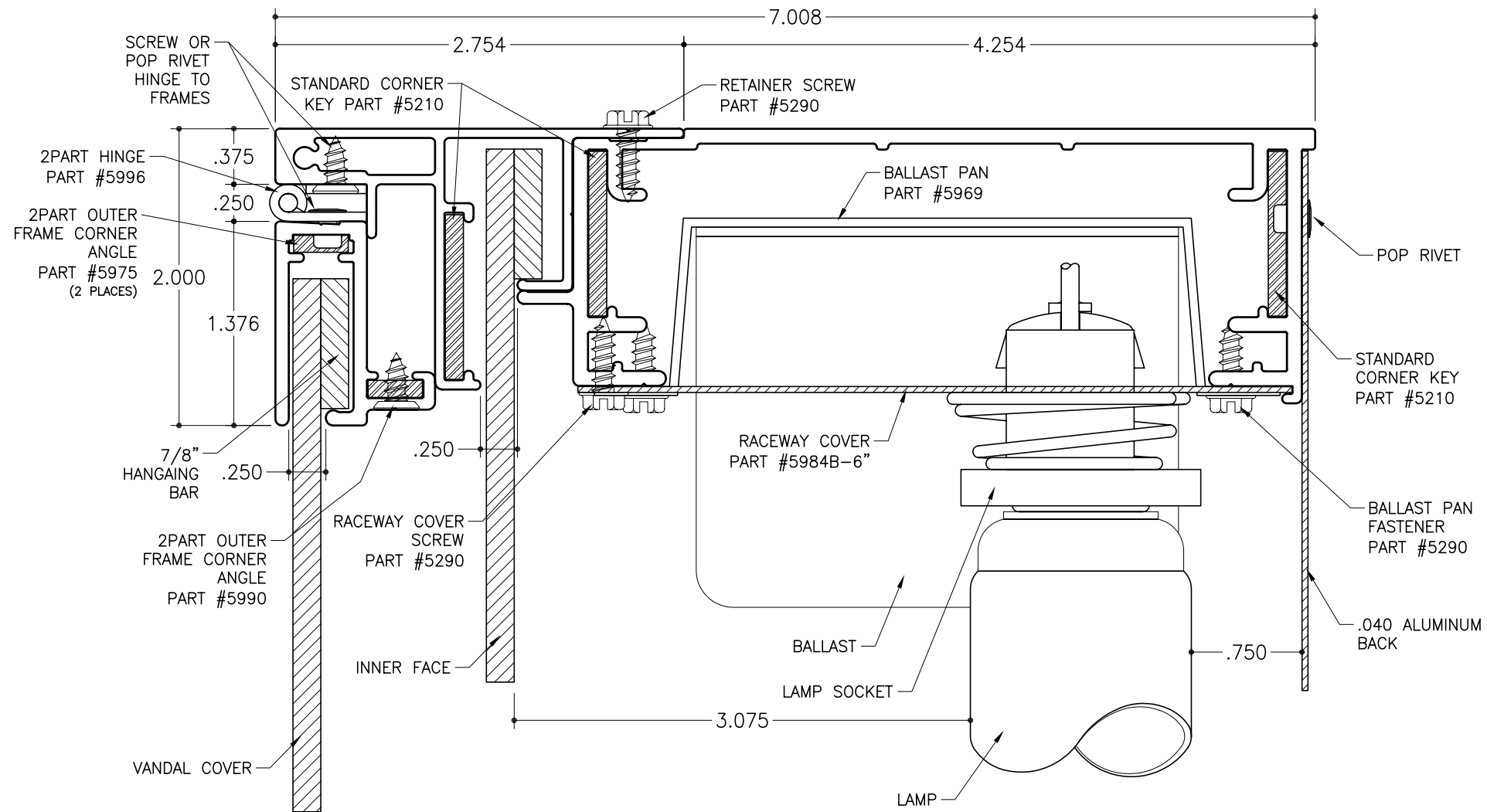


STD-22 for Rigid Faces - Electrical

2Part 6" Single Face Body  
Part #1926

2Part Inner Frame  
Part #1960

2Part Outer Frame  
Part #1942



**SECTION DETAIL - ELECTRICAL**

SCALE : 1"=1"

**GENERAL NOTES:**

1. Lamping - The bodies and retainers should be cut 1-3/4" longer than the nominal lamp size for horizontal or vertical lamping.  
General Lamping Guidelines:  
Double the distance between the front of the lamp and the back of the plastic face for your center to center lamp spacing. Maximum center to center is 12".
2. Hanging Bar - It is recommended to use a hanging bar on all rigid face.
3. SignComp does not supply the ballast(s), lamps, lamp sockets, back supports, gussets or .040 aluminum back.

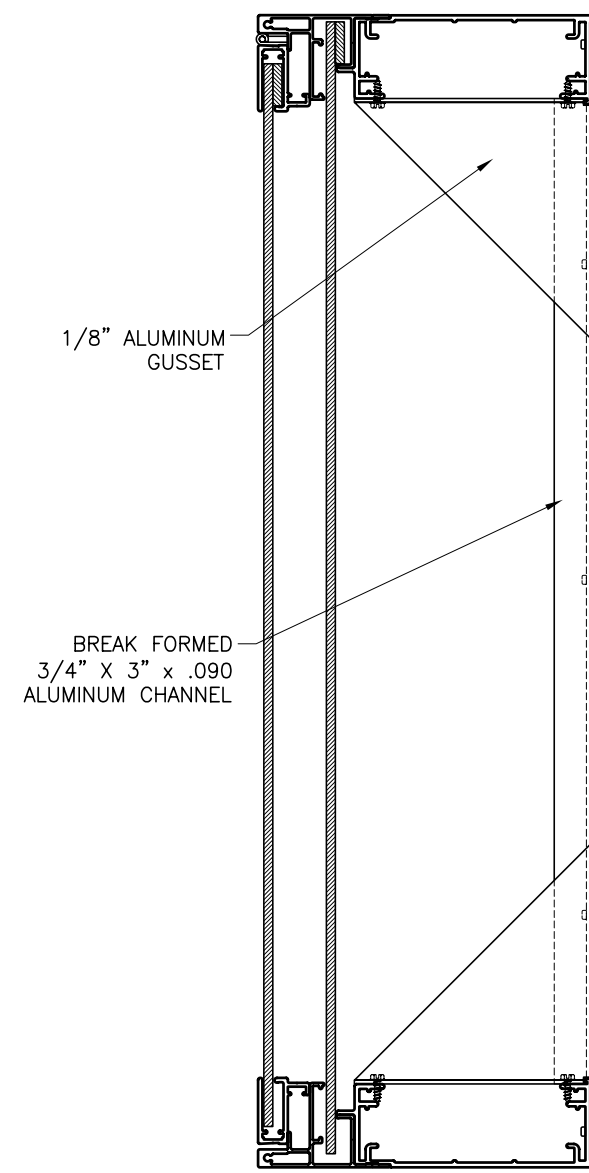
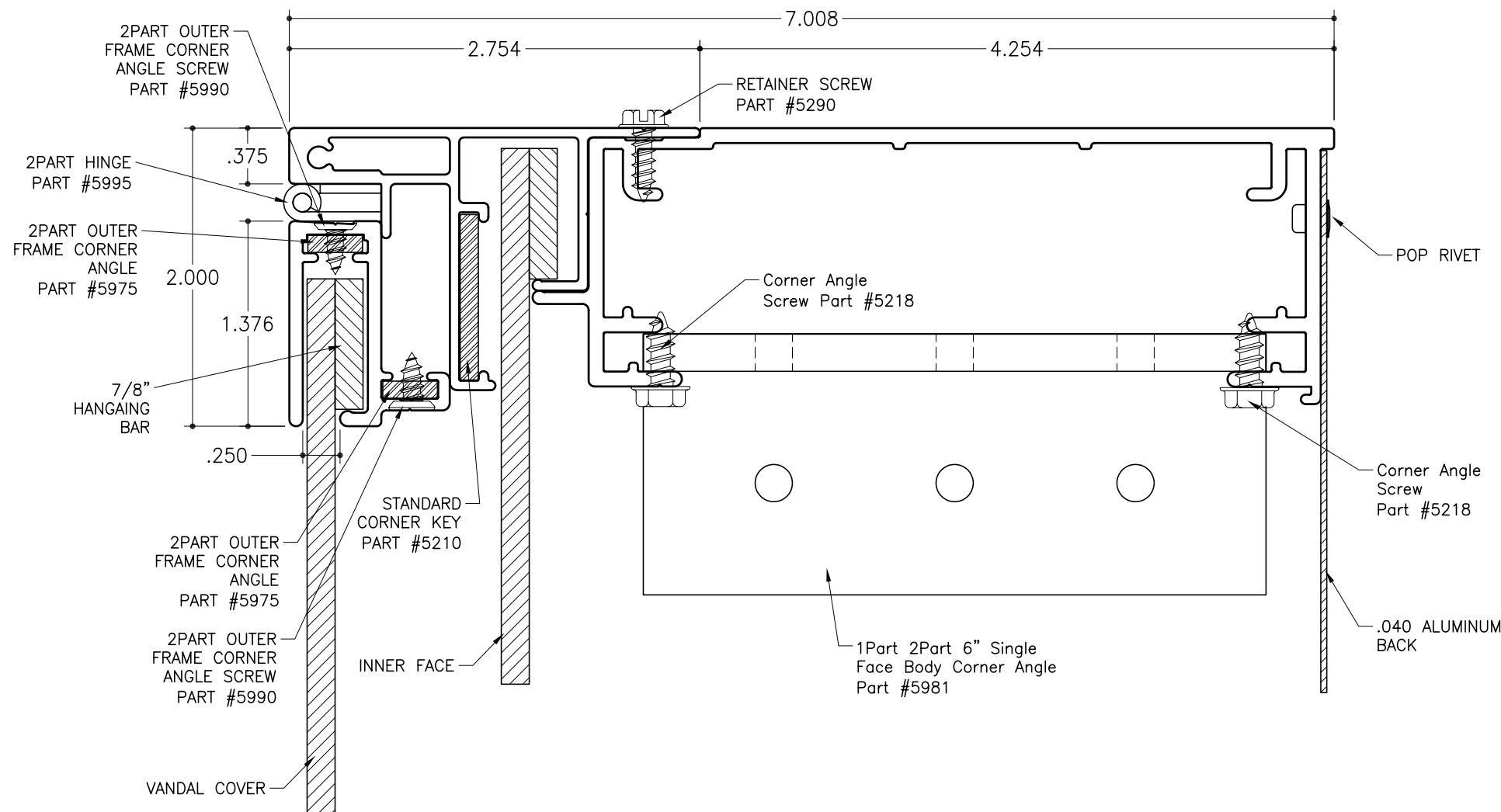
4. Hinge Attachment - See hinge attachment instructions for recommended attachment of the hinge. (HINT:) use a thin adhesive tape or bonding agent to assist in the attachment of the hinge to the frames.
5. The maximum recommended size is 32 sq.ft.
6. Gas Supports are not recommended for use with the 2Part Inner/Outer Frames. Using Gas Supports may result in damage to the frame and or hinge.

STD-22 for Rigid Faces - Mechanically Fastened

2Part 6" Single Face Body  
Part #1926

2Part Inner Frame  
Part #1960

2Part Outer Frame  
Part #1942



**SECTION DETAIL - MECHANICALLY FASTENED**

SCALE : 1"=1"

**BRACING DETAIL**

SCALE : 3"=1'

**GENERAL NOTES:**

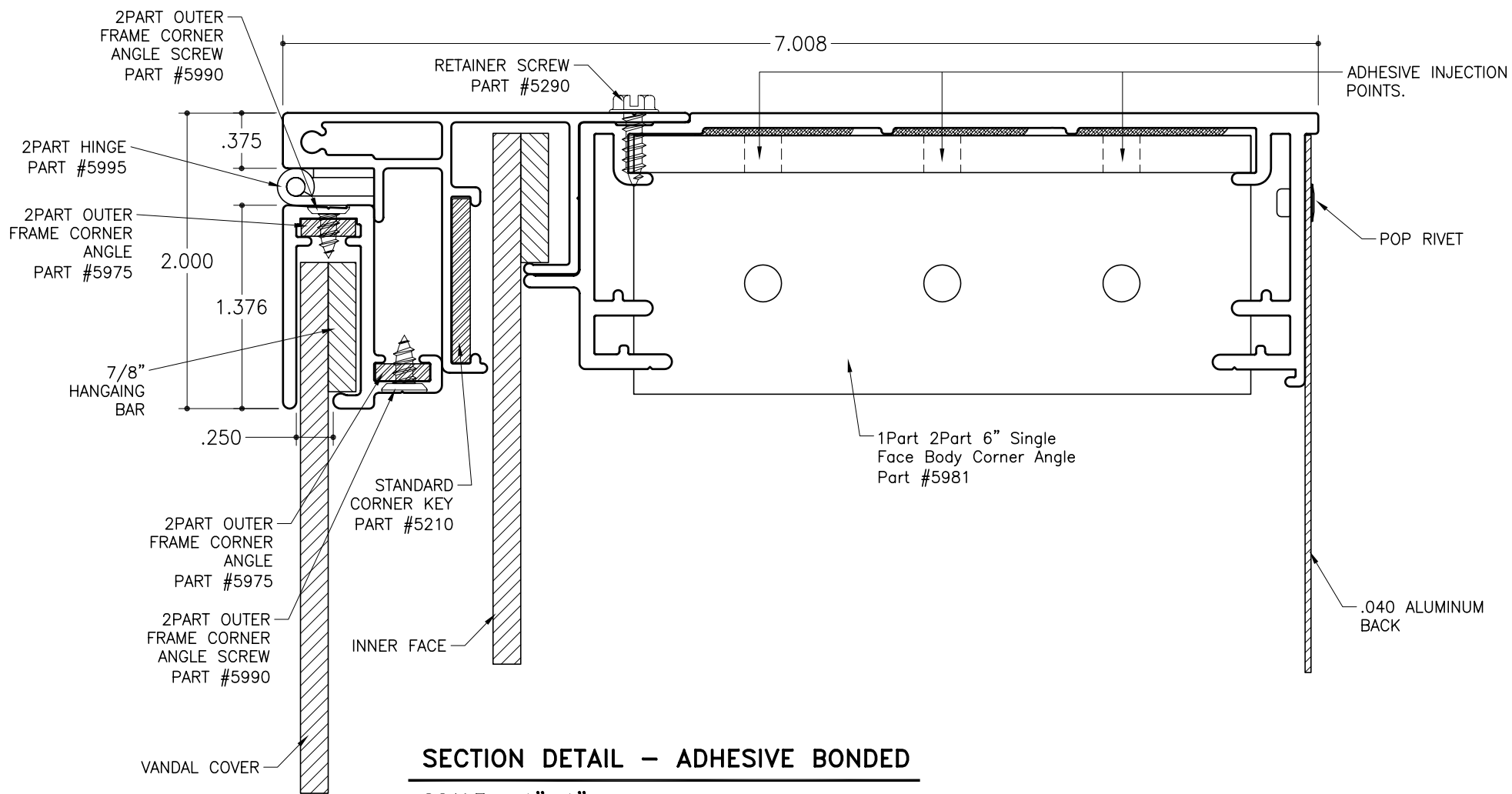
1. Lamping - The bodies and retainers should be cut 1-3/4" longer than the nominal lamp size for horizontal or vertical lamping.  
General Lamping Guidelines:  
Double the distance between the front of the lamp and the back of the plastic face for your center to center lamp spacing. Maximum center to center is 12".
2. Hanging Bar - It is recommended to use a hanging bar on all rigid face.
3. SignComp does not supply the ballast(s), lamps, lamp sockets, back supports, gussets or .040 aluminum back.
4. Hinge Attachment - See hinge attachment instructions for recommended attachment of the hinge. (HINT:) use an thin adhesive tape or bonding agent to assist in the attachment of the hinge to the frames.
5. The maximum recommended size is 32 sq.ft.
6. Gas Supports are not recommended for use with the 2Part Inner/Outer Frames. Using Gas Supports may result in damage to the frame and or hinge.

STD-22 for Rigid Faces - Adhesive Bonded

2Part 6" Single Face Body  
Part #1926

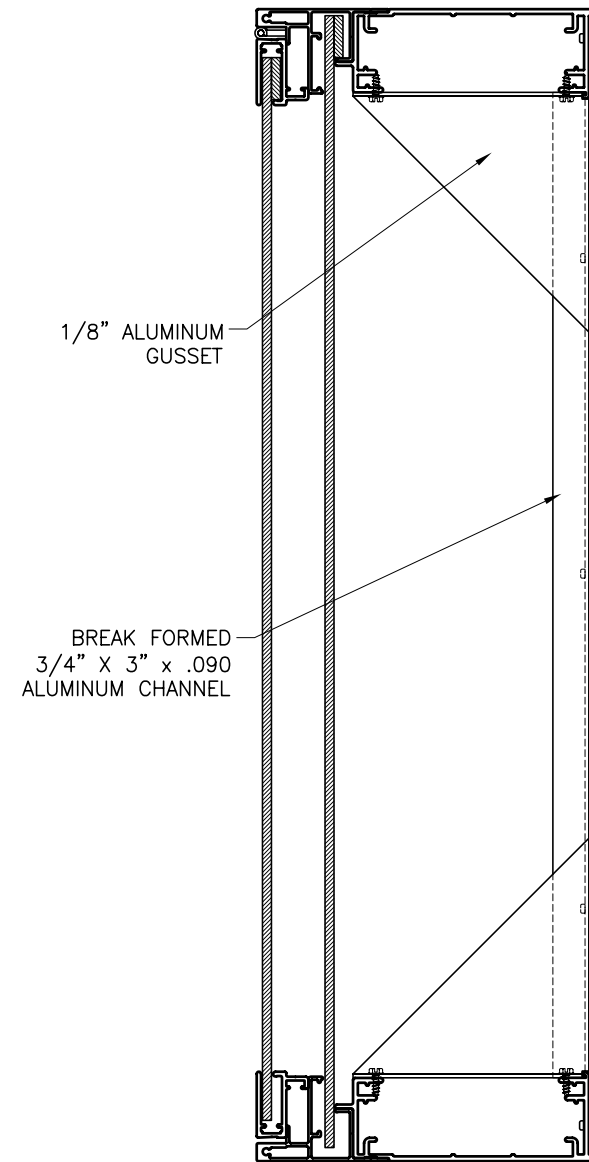
2Part Inner Frame  
Part #1960

2Part Outer Frame  
Part #1942



**SECTION DETAIL - ADHESIVE BONDED**

SCALE : 1"=1"



**BRACING DETAIL**

SCALE : 3"=1'

**GENERAL NOTES:**

1. Lamping - The bodies and retainers should be cut 1-3/4" longer than the nominal lamp size for horizontal or vertical lamping.

**General Lamping Guidelines:**

Double the distance between the front of the lamp and the back of the plastic face for your center to center lamp spacing. Maximum center to center is 12".

2. Hanging Bar - It is recommended to use a hanging bar on all rigid face.

3. SignComp does not supply the ballast(s), lamps, lamp sockets, back supports, gussets or .040 aluminum back.

4. Hinge Attachment - See hinge attachment instructions for recommended attachment of the hinge. (HINT:) use an thin adhesive tape or bonding agent to assist in the attachment of the hinge to the frames.

5. The maximum recommended size is 32 sq.ft.

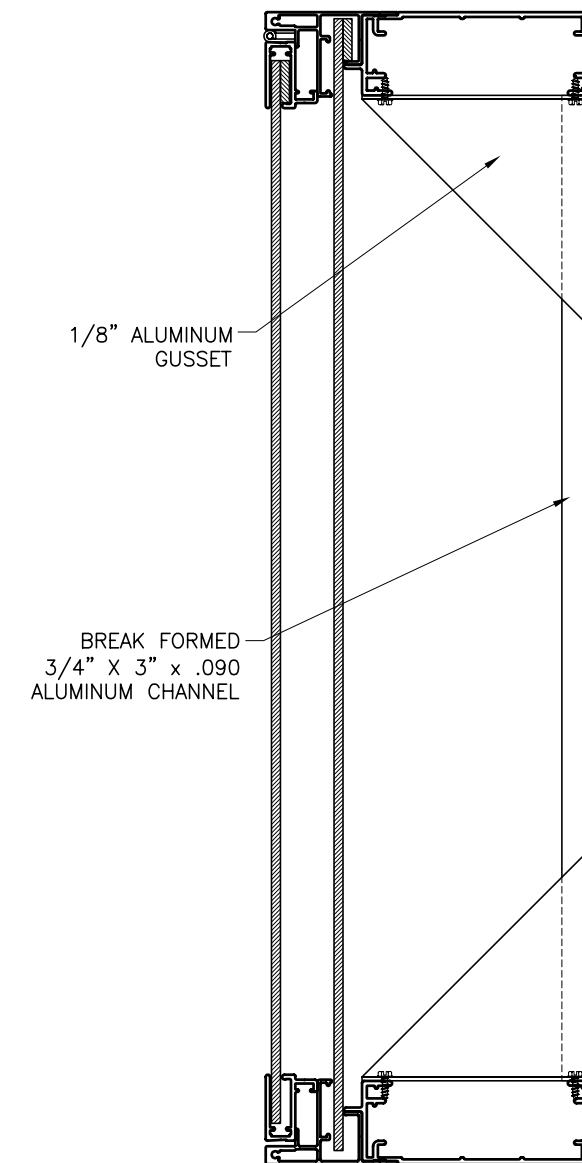
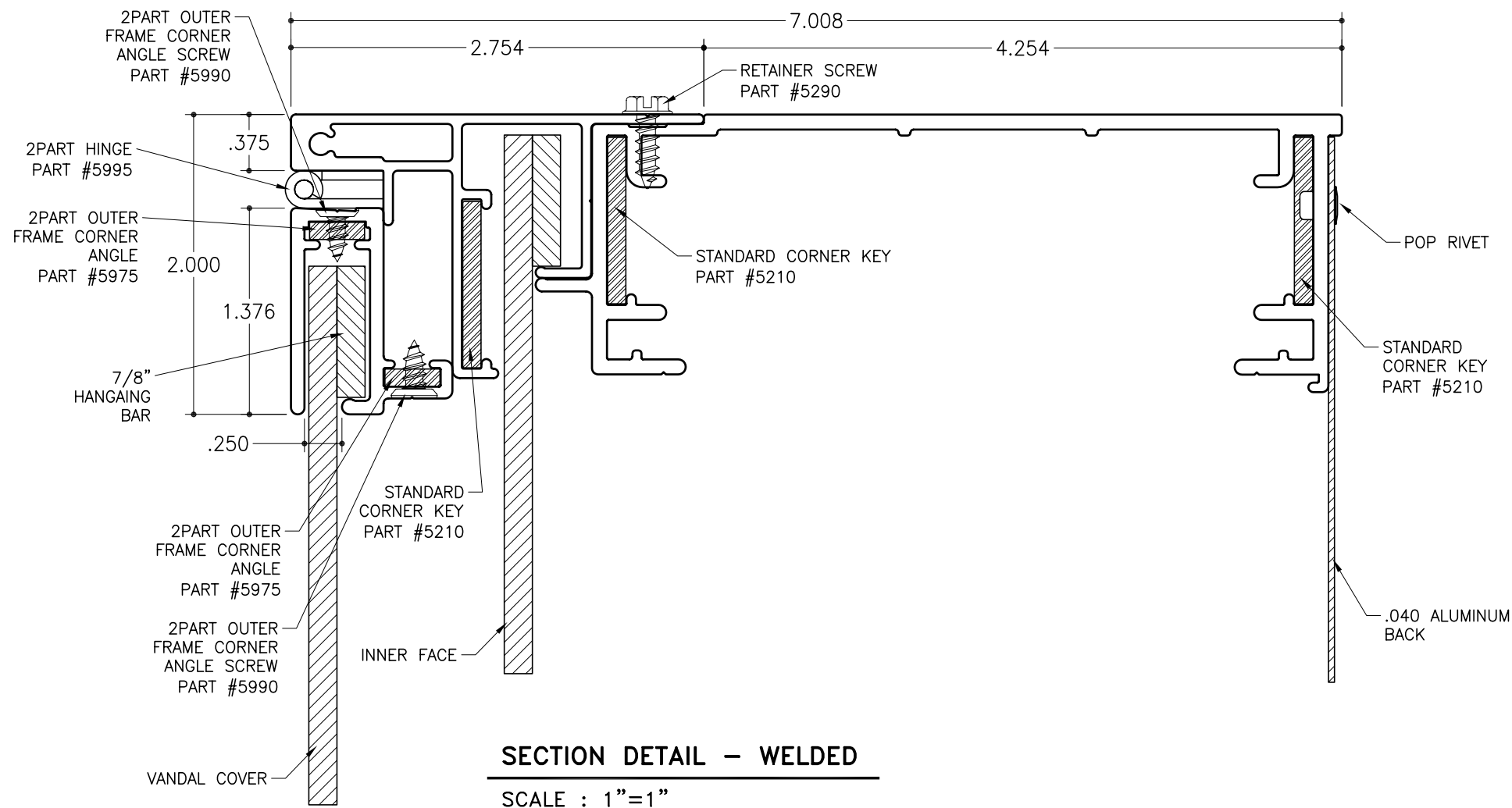
6. Gas Supports are not recommended for use with the 2Part Inner/Outer Frames. Using Gas Supports may result in damage to the frame and or hinge.

STD-22 for Rigid Faces - Welded

2Part 6" Single Face Body  
Part #1926

2Part Inner Frame  
Part #1960

2Part Outer Frame  
Part #1942



**GENERAL NOTES:**

1. Lamping - The bodies and retainers should be cut 1-3/4" longer than the nominal lamp size for horizontal or vertical lamping.  
General Lamping Guidelines:  
Double the distance between the front of the lamp and the back of the plastic face for your center to center lamp spacing. Maximum center to center is 12".
2. Hanging Bar - It is recommended to use a hanging bar on all rigid face.
3. SignComp does not supply the ballast(s), lamps, lamp sockets, back supports, gussets or .040 aluminum back.

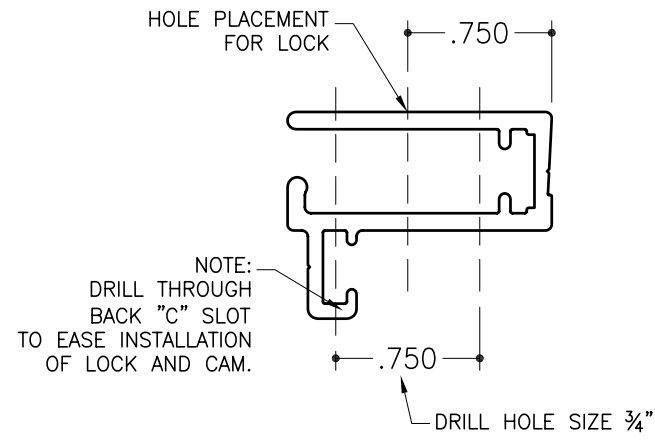
4. Hinge Attachment - See hinge attachment instructions for recommended attachment of the hinge. (HINT:) use a thin adhesive tape or bonding agent to assist in the attachment of the hinge to the frames.
5. The maximum recommended size is 32 sq.ft.
6. Gas Supports are not recommended for use with the 2Part Inner/Outer Frames. Using Gas Supports may result in damage to the frame and or hinge.

STD-22 for Rigid Faces - Side/Bottom Lock Attachment

2Part 6" Single Face Body  
Part #1926

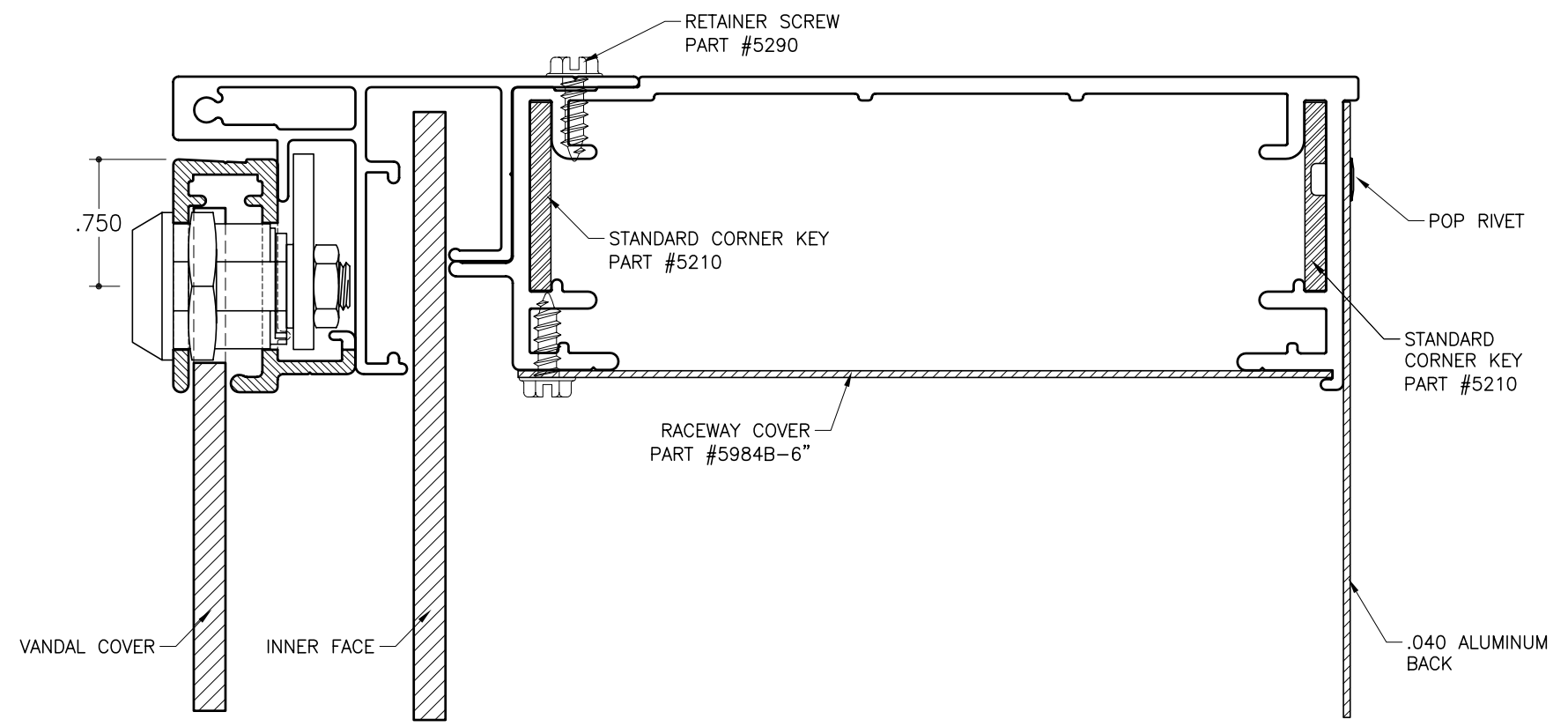
2Part Inner Frame  
Part #1960

2Part Outer Frame  
Part #1942



**LOCK PLACEMENT DETAIL**

SCALE : 1"=1"

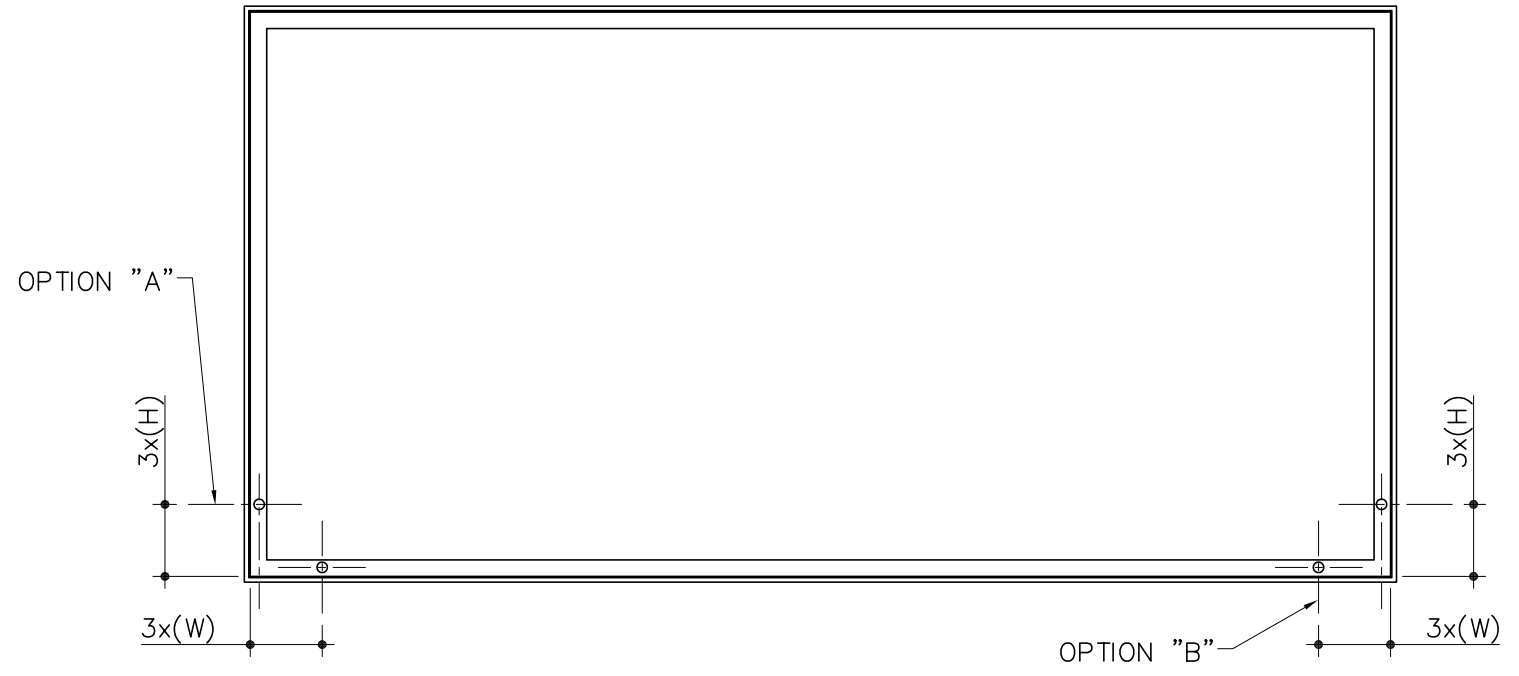


**SECTION DETAIL - SIDE / BOTTOM**

SCALE : 1"=1"

**GENERAL NOTES:**

1. Lamping - The bodies and retainers should be cut 1-3/4" longer than the nominal lamp size for horizontal or vertical lamping.  
General Lamping Guidelines:  
Double the distance between the front of the lamp and the back of the plastic face for your center to center lamp spacing. Maximum center to center is 12".
2. Hanging Bar - It is recommended to use a hanging bar on all rigid face.
3. SignComp does not supply the ballast(s), lamps, lamp sockets, back supports, gussets or .040 aluminum back.
4. Hinge Attachment - See hinge attachment instructions for recommended attachment of the hinge. (HINT:) use a thin adhesive tape or bonding agent to assist in the attachment of the hinge to the frames.
5. The maximum recommended size is 32 sq.ft.
6. Gas Supports are not recommended for use with the 2Part Inner/Outer Frames. Using Gas Supports may result in damage to the frame and or hinge.



**LOCK PLACEMENT**

SCALE : 3/4"=1'

OPTION "A":  
LOCKS ON SIDE.

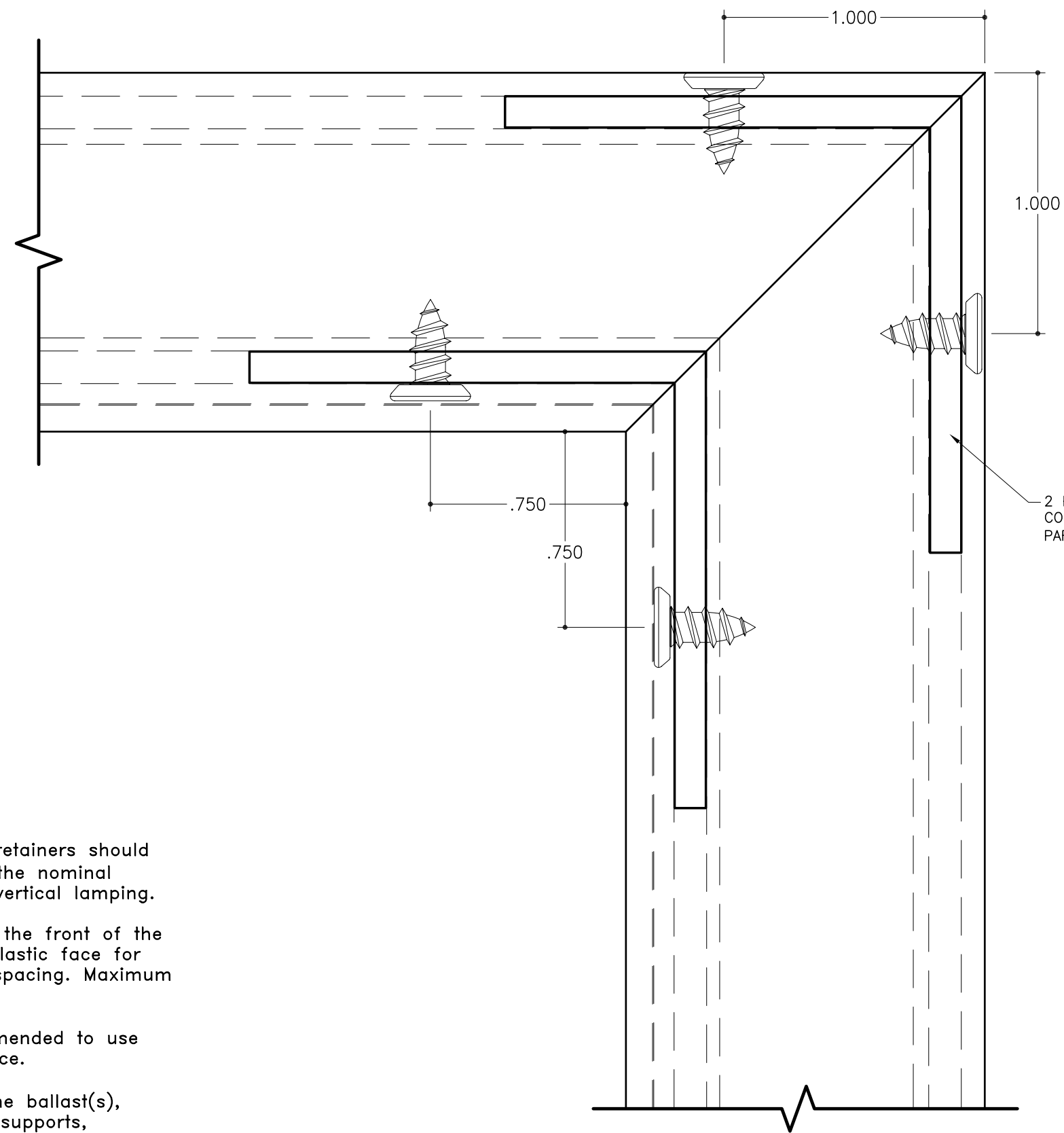
OPTION "B"  
LOCKS ON BOTTOM

STD-22 for Rigid Faces - Welded

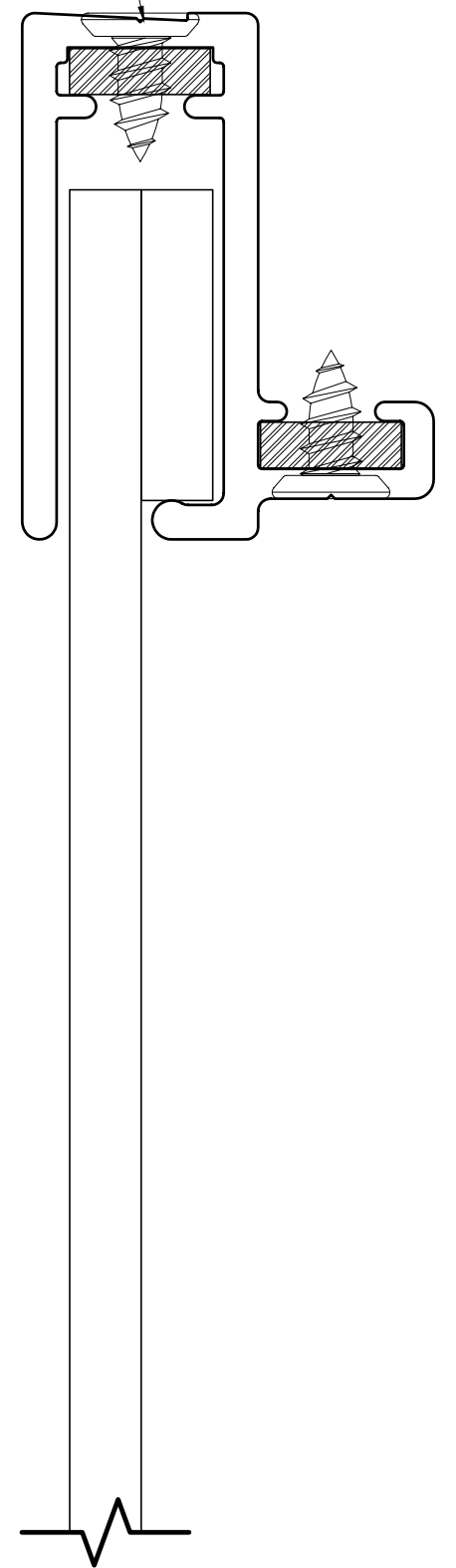
2Part 6" Single Face Body  
Part #1926

2Part Inner Frame  
Part #1960

2Part Outer Frame  
Part #1942



2 PART OUTER FRAME  
CORNER ANGLE SCREW  
#8x<sup>3</sup>/<sub>8</sub>" PHILLIPS HEAD (SS)  
PART #5990



2 PART OUTER FRAME  
CORNER ANGLE  
PART #5975

**2PART OUTER FRAME CORNER SECTION**

SCALE : 2"=1"

**2PART OUTER FRAME SECTION**

SCALE : 2"=1"

**GENERAL NOTES:**

1. Lamping - The bodies and retainers should be cut 1-3/4" longer than the nominal lamp size for horizontal or vertical lamping.  
 General Lamping Guidelines:  
 Double the distance between the front of the lamp and the back of the plastic face for your center to center lamp spacing. Maximum center to center is 12".
2. Hanging Bar - It is recommended to use a hanging bar on all rigid face.
3. SignComp does not supply the ballast(s), lamps, lamp sockets, back supports, gussets or .040 aluminum back.
4. Hinge Attachment - See hinge attachment instructions for recommended attachment of the hinge. (HINT:) use a thin adhesive tape or bonding agent to assist in the attachment of the hinge to the frames.