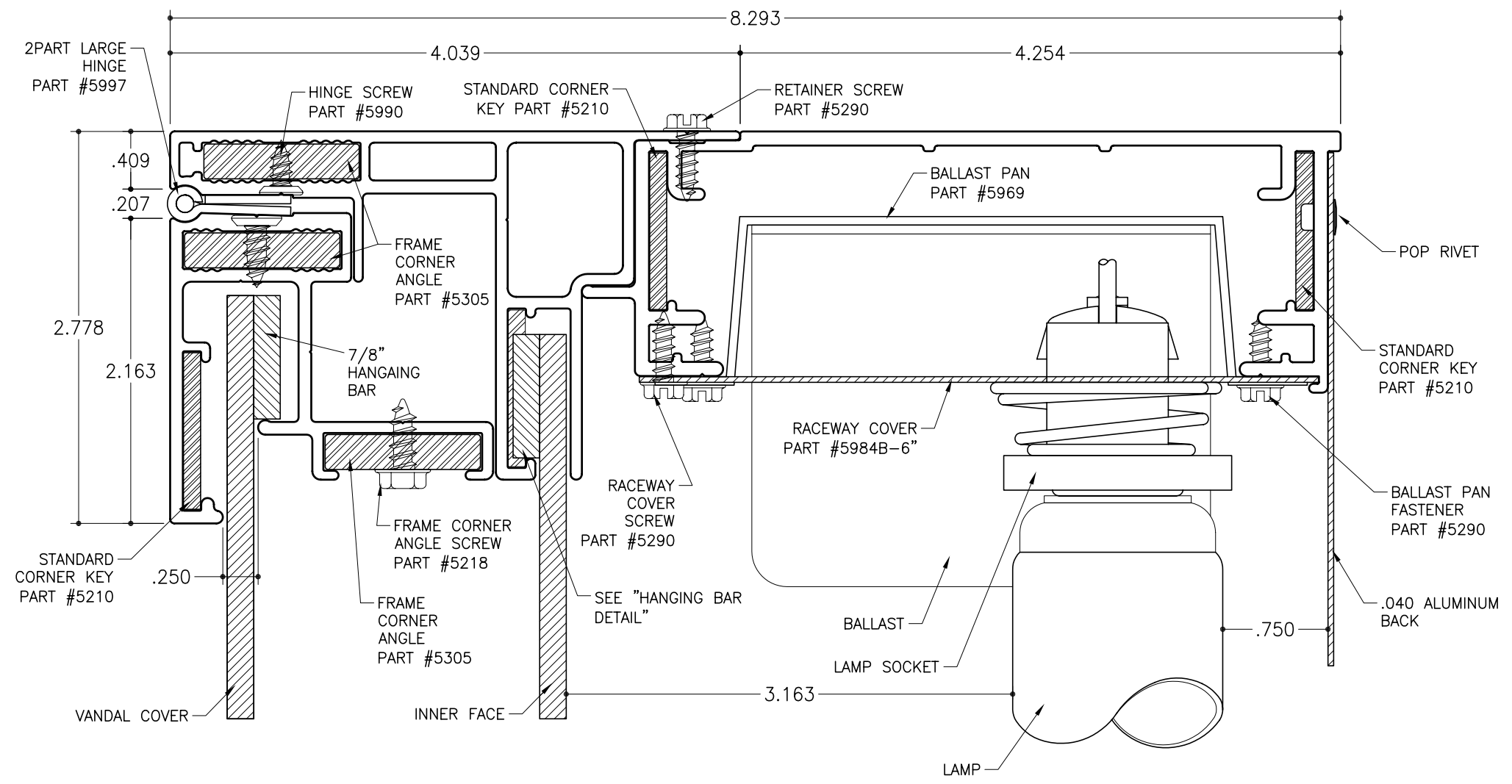


STD-24 for Rigid Faces - Electrical

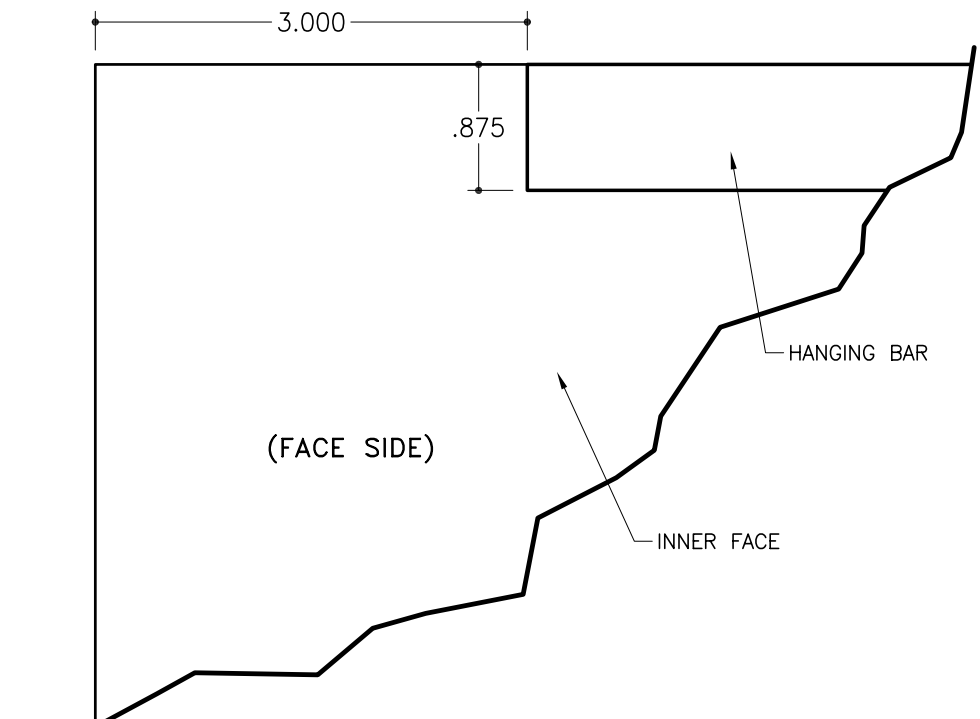
- 2Part 6" Single Face Body
Part #1926
- 2Part Large Inner Frame
Part #1959
- 2Part Large Outer Frame
Part #1941



SECTION DETAIL - ELECTRICAL
SCALE : 1"=1"

GENERAL NOTES:

1. Lamping - The bodies and retainers should be cut 1-3/4" longer than the nominal lamp size for horizontal or vertical lamping.
General Lamping Guidelines:
Double the distance between the front of the lamp and the back of the plastic face for your center to center lamp spacing. Maximum center to center is 12".
2. Hanging Bar - It is recommended to use a hanging bar on all rigid face.
3. SignComp does not supply the ballast(s), lampss, lamp sockets, back supports, gussets or .040 aluminum back.
4. 2Part Large Outer Frame to be cut 1-3/16" less than the overall width and 1-3/8" less than the overall height when the vandal cover is to be top hinged.
5. Inner face hanging bar to be placed 3" in from edges of inner face, this will allow the hanging bar to clear the corner keys. The hanging bar is to be attached to the face side if the inner face.



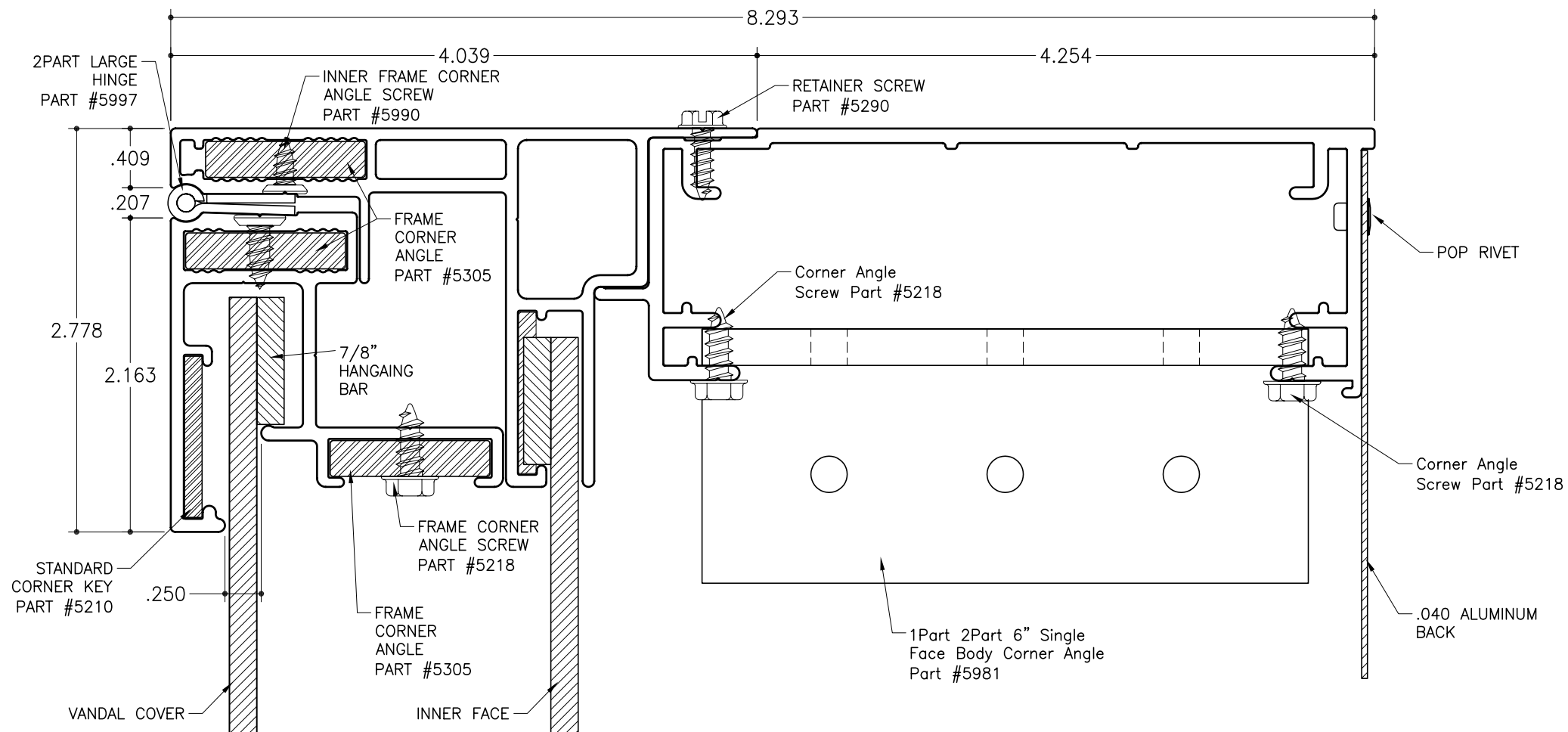
A HANGING BAR DETAIL
SCALE : 3/4" = 1"

STD-24 for Rigid Faces - Mechanically Fastened

2Part 6" Single Face Body
Part #1926

2Part Large Inner Frame
Part #1959

2Part Large Outer Frame
Part #1941



SECTION DETAIL - MECHANICALLY FASTENED

SCALE : 1"=1"

GENERAL NOTES:

1. Lamping - The bodies and retainers should be cut 1-3/4" longer than the nominal lamp size for horizontal or vertical lamping.

General Lamping Guidelines:

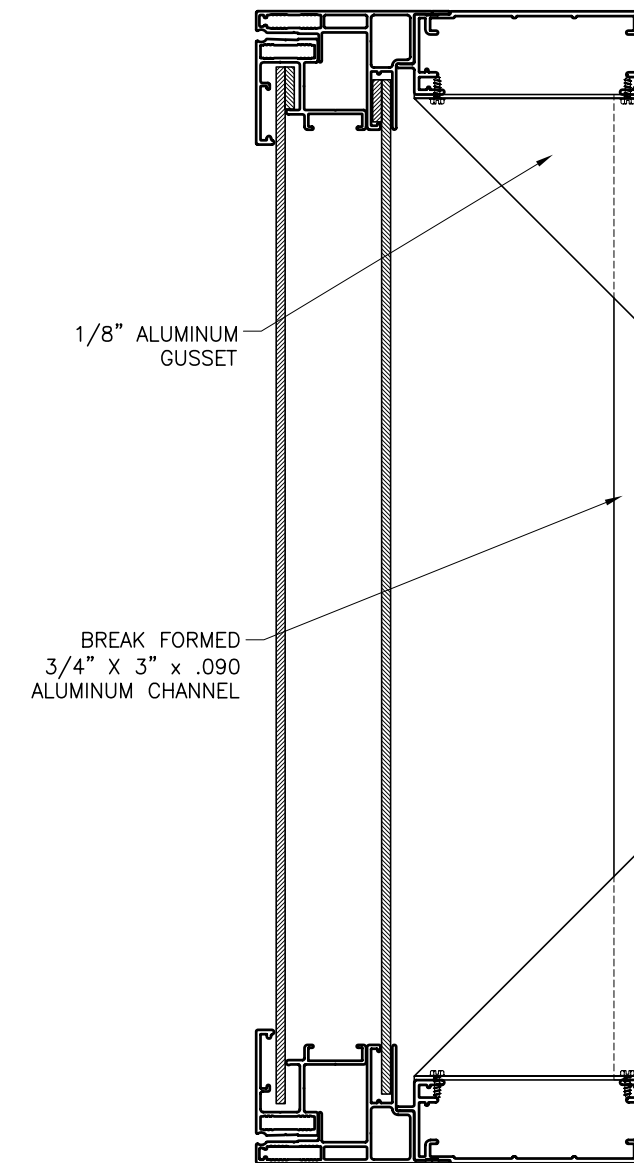
Double the distance between the front of the lamp and the back of the plastic face for your center to center lamp spacing. Maximum center to center is 12".

2. Hanging Bar - It is recommended to use a hanging bar on all rigid face.

3. SignComp does not supply the ballast(s), lamps, lamp sockets, back supports, gussets or .040 aluminum back.

4. 2Part Large Outer Frame to be cut 1-3/16" less than the overall width and 1-3/8" less than the overall height when the vandal cover is to be top hinged.

5. Inner face hanging bar to be placed 3" in from edges of inner face, this will allow the hanging bar to clear the corner keys. The hanging bar is to be attached to the face side if the inner face. See Detail "A" on page 1 of 7.



BRACING DETAIL

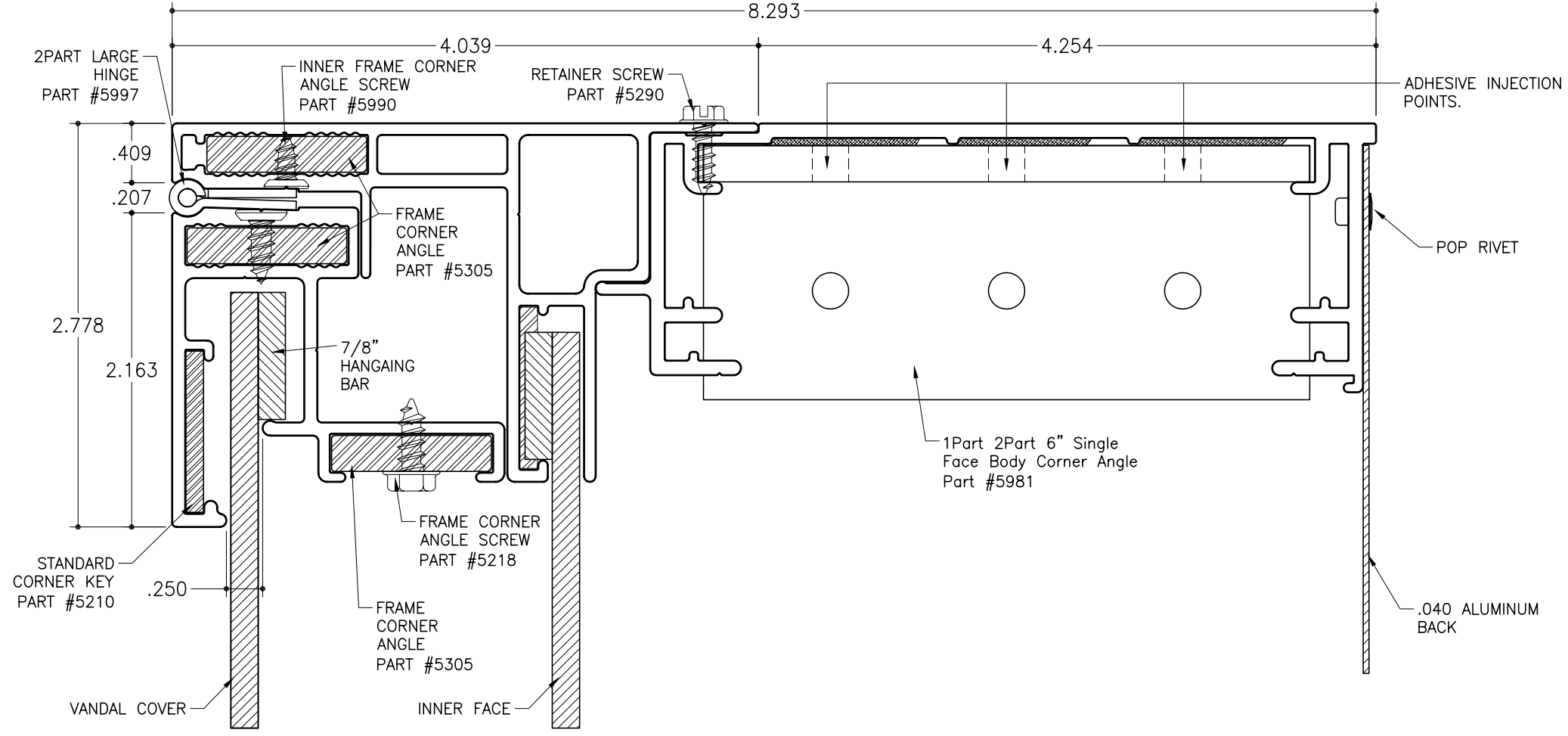
SCALE : 3"=1"

STD-24 for Rigid Faces - Adhesive Bonded

2Part 6" Single Face Body
Part #1926

2Part Large Inner Frame
Part #1959

2Part Large Outer Frame
Part #1941

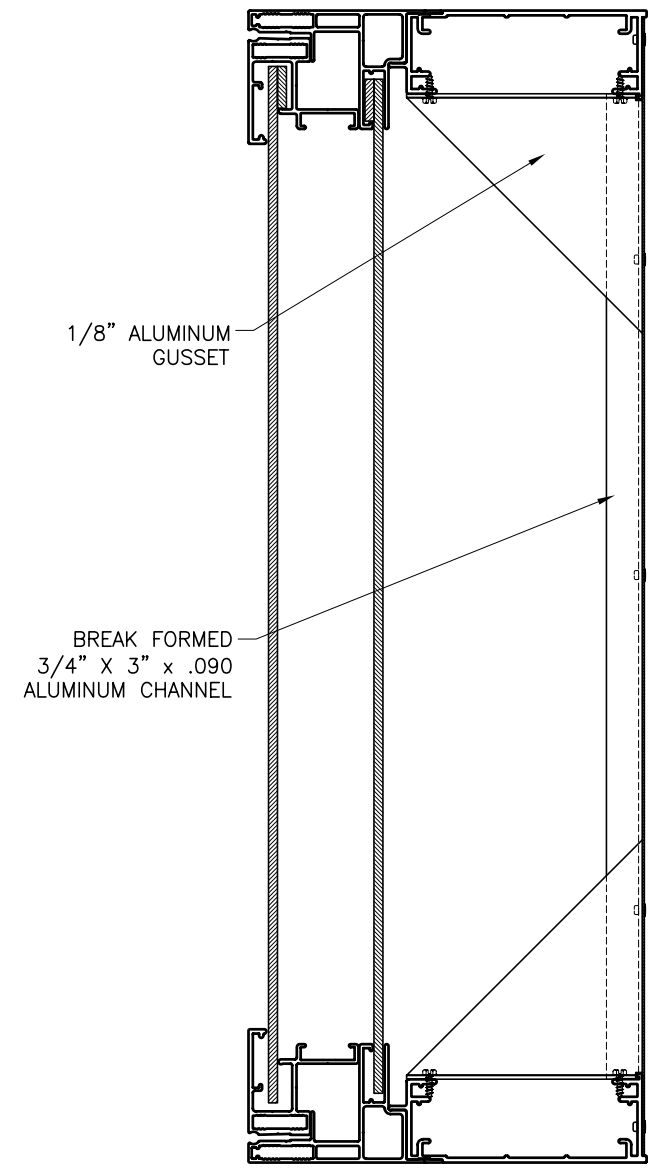


SECTION DETAIL - ADHESIVE BONDED

SCALE : 1"=1"

GENERAL NOTES:

1. Lamping - The bodies and retainers should be cut 1-3/4" longer than the nominal lamp size for horizontal or vertical lamping.
General Lamping Guidelines:
Double the distance between the front of the lamp and the back of the plastic face for your center to center lamp spacing. Maximum center to center is 12".
2. Hanging Bar - It is recommended to use a hanging bar on all rigid face.
3. SignComp does not supply the ballast(s), lamps, lamp sockets, back supports, gussets or .040 aluminum back.
4. 2Part Large Outer Frame to be cut 1-3/16" less than the overall width and 1-3/8" less than the overall height when the vandal cover is to be top hinged.
5. Inner face hanging bar to be placed 3" in from edges of inner face, this will allow the hanging bar to clear the corner keys. The hanging bar is to be attached to the face side of the inner face. See Detail "A" on page 1 of 7.



BRACING DETAIL

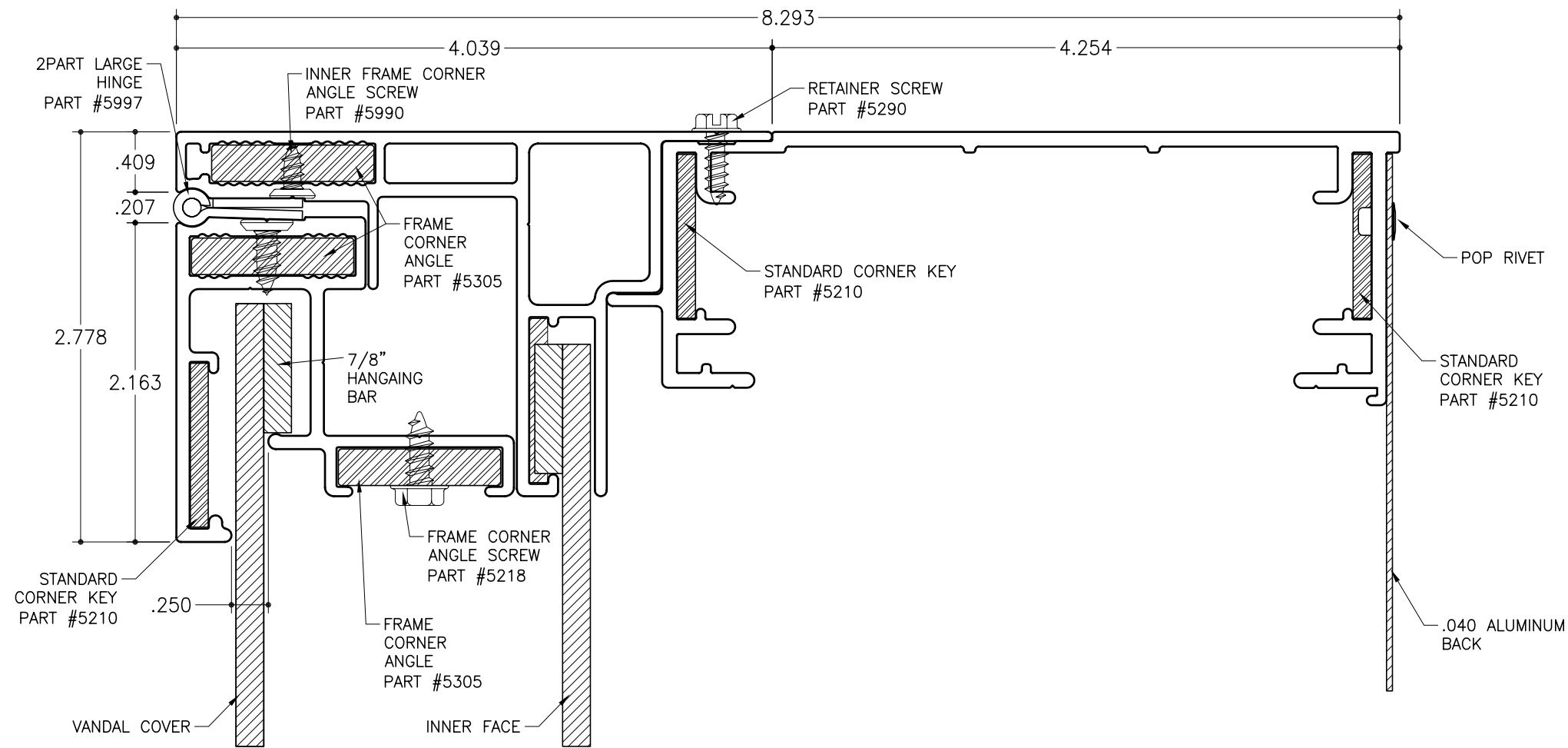
SCALE : 3"=1'

STD-24 for Rigid Faces - Welded

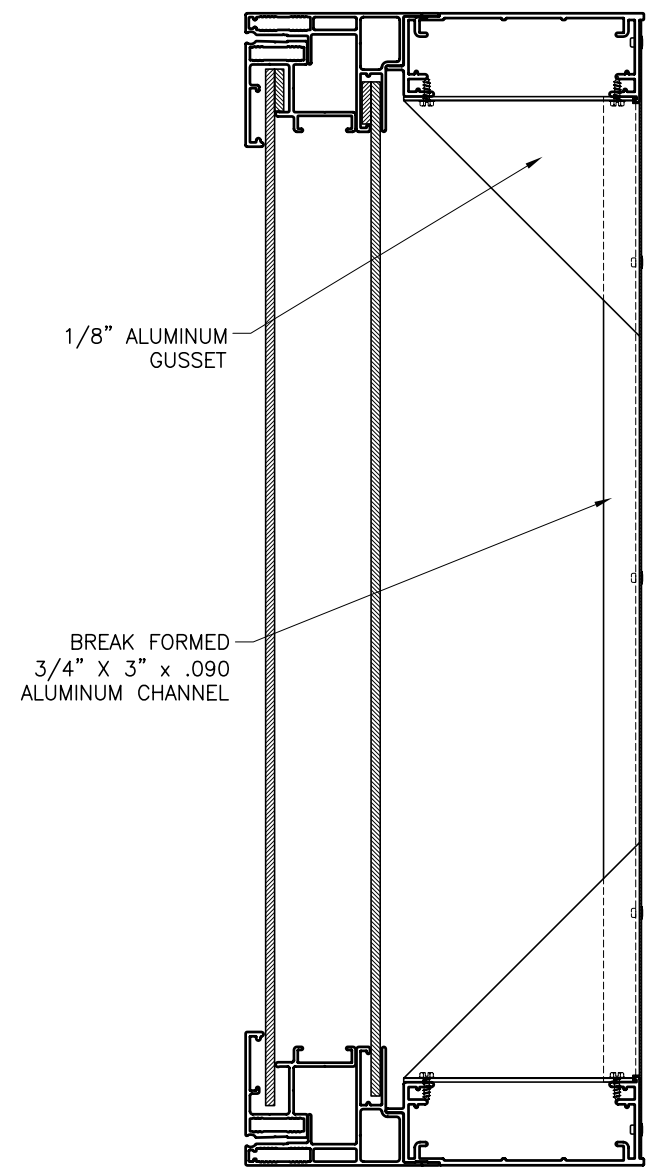
2Part 6" Single Face Body
 Part #1926

2Part Large Inner Frame
 Part #1959

2Part Large Outer Frame
 Part #1941



SECTION DETAIL - WELDED
 SCALE : 1"=1"



BRACING DETAIL
 SCALE : 3"=1'

GENERAL NOTES:

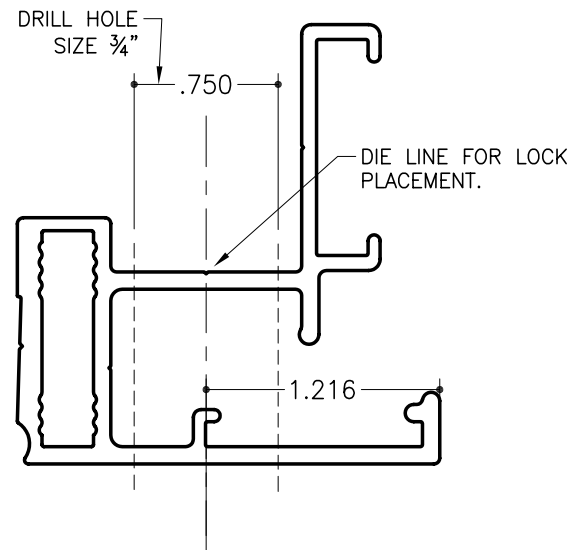
1. Lamping - The bodies and retainers should be cut 1-3/4" longer than the nominal lamp size for horizontal or vertical lamping.
 General Lamping Guidelines:
 Double the distance between the front of the lamp and the back of the plastic face for your center to center lamp spacing. Maximum center to center is 12".
2. Hanging Bar - It is recommended to use a hanging bar on all rigid face.
3. SignComp does not supply the ballast(s), lamps, lamp sockets, back supports, gussets or .040 aluminum back.
4. 2Part Large Outer Frame to be cut 1-3/16" less than the overall width and 1-3/8" less than the overall height when the vandal cover is to be top hinged.
5. Inner face hanging bar to be placed 3" in from edges of inner face, this will allow the hanging bar to clear the corner keys. The hanging bar is to be attached to the face side if the inner face. See Detail "A" on page 1 of 7.

STD-24 for Rigid Faces - Removeable Retainer

2Part 6" Single Face Body
Part #1926

2Part Large Inner Frame
Part #1959

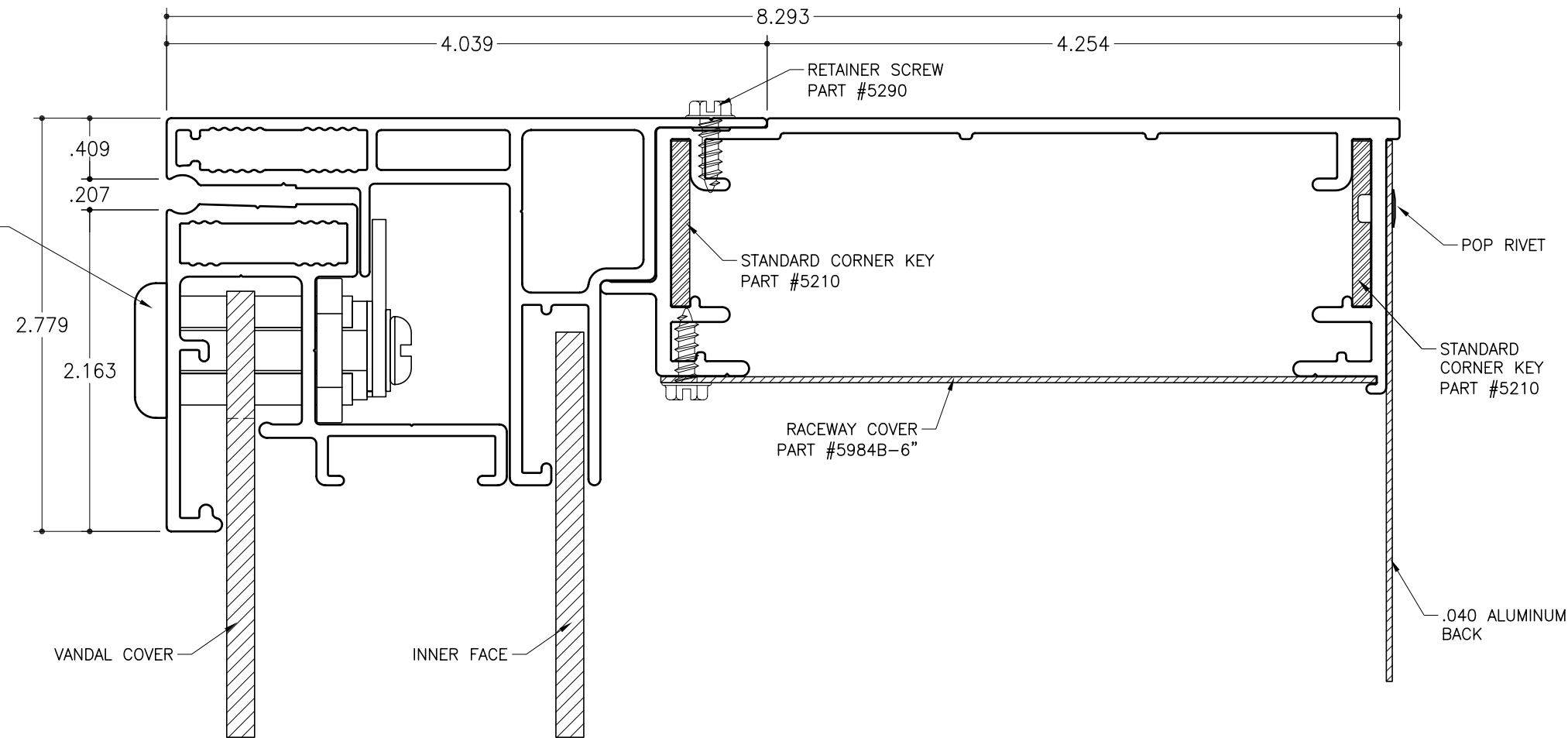
2Part Large Outer Frame
Part #1941



LOCK HOLE DETAIL

SCALE : 1" = 1"

2PART LARGE
LOCK PART #5993



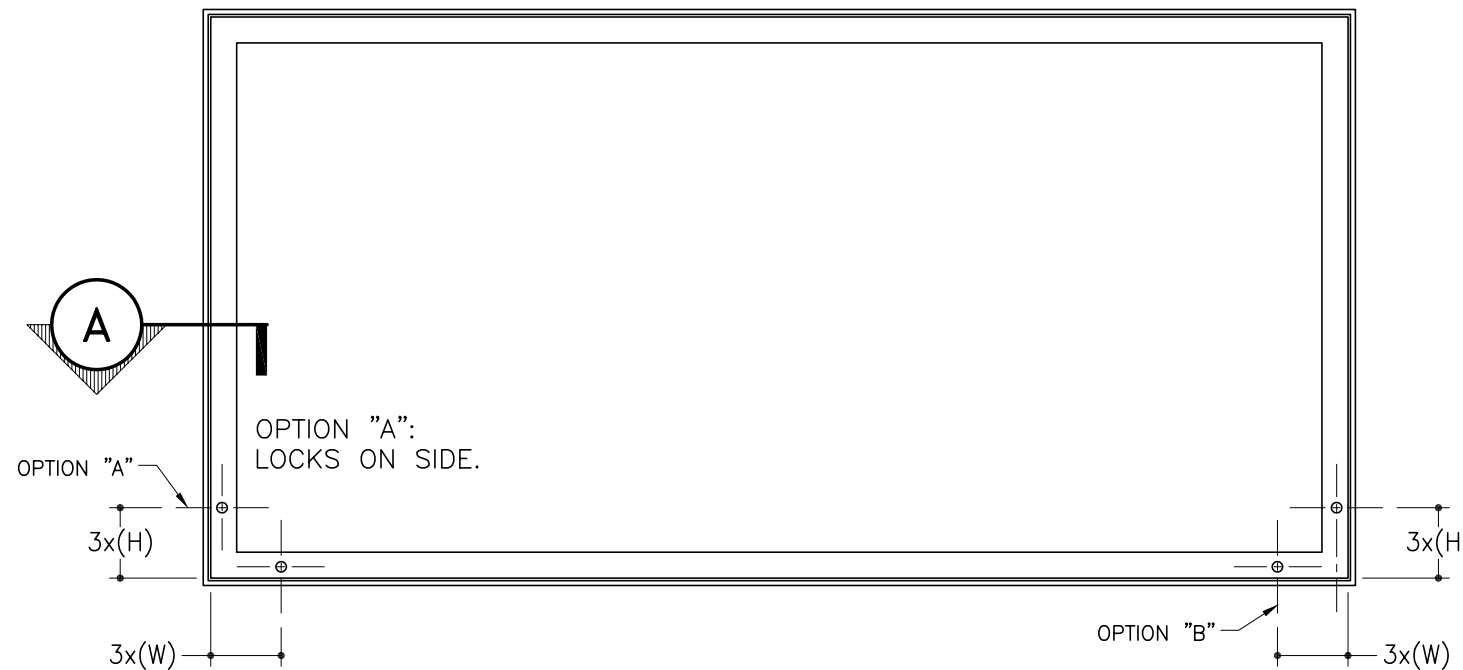
SECTION DETAIL - SIDE

SCALE : 1"=1"

GENERAL NOTES:

1. Lamping - The bodies and retainers should be cut 1-3/4" longer than the nominal lamp size for horizontal or vertical lamping.
General Lamping Guidelines:
Double the distance between the front of the lamp and the back of the plastic face for your center to center lamp spacing. Maximum center to center is 12".
2. Hanging Bar - It is recommended to use a hanging bar on all rigid face.
3. SignComp does not supply the ballast(s), lampss, lamp sockets, back supports, gussets or .040 aluminum back.

5. Notch face to fit around lock leaving 1/2" of space around lock for proper expansion and contraction of face.
6. DO NOT OVER TIGHTEN LOCK NUT. Over tightening the will cause the allowed space for the face to close down onto the face which may result in damage to the face.
7. Apply "lock tight" to the nut. Apply nut and snug down.
8. Locks can be places on the side or the bottom Frame(s).



LOCK PLACEMENT

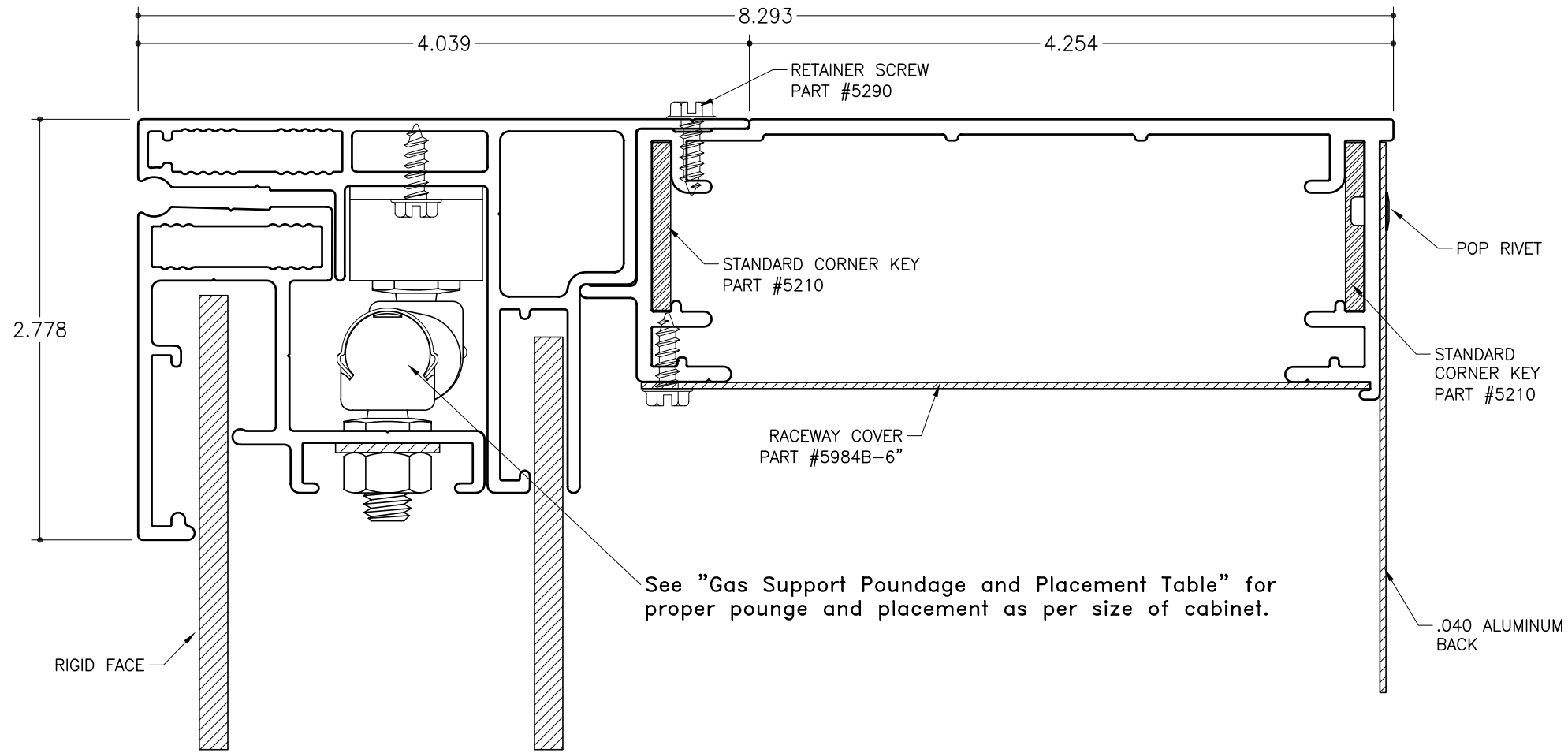
SCALE : 3/4" = 1"

STD-24 for Rigid Faces - Side w/Gas Support

2Part 6" Single Face Body
Part #1926

2Part Large Inner Frame
Part #1959

2Part Large Outer Frame
Part #1941



SECTION DETAIL - SIDE

SCALE : 1"=1"

GENERAL NOTES:

1. Lamping - The bodies and retainers should be cut 1-3/4" longer than the nominal lamp size for horizontal or vertical lamping.

General Lamping Guidelines:

Double the distance between the front of the lamp and the back of the plastic face for your center to center lamp spacing. Maximum center to center is 12".

2. Hanging Bar - It is recommended to use a hanging bar on all rigid face.

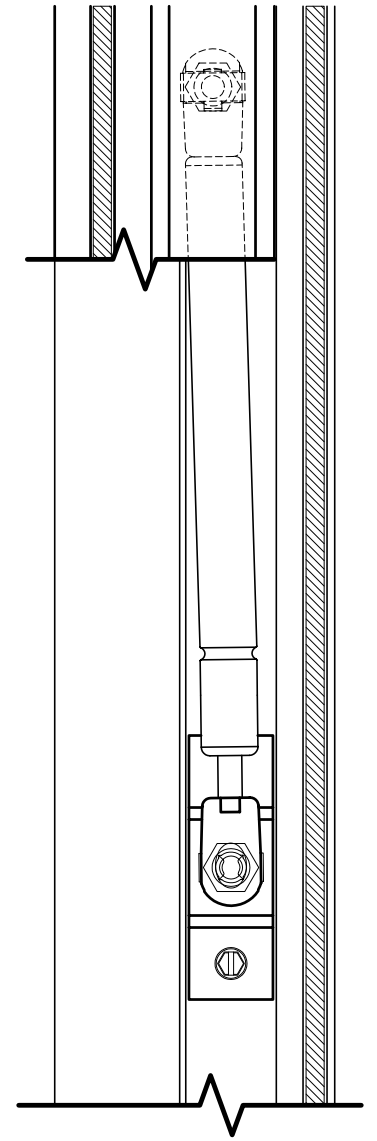
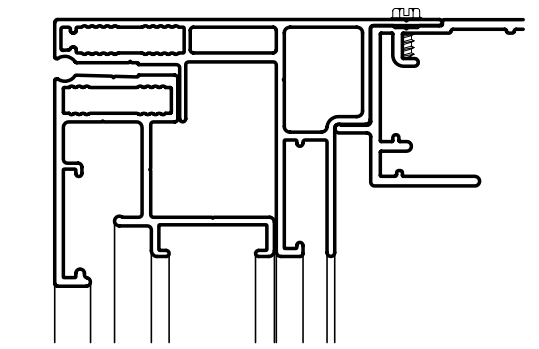
3. SignComp does not supply the ballast(s), lamps, lamp sockets, back supports, gussets or .040 aluminum back.

STD-24 for Rogid Faces - Gas Supports

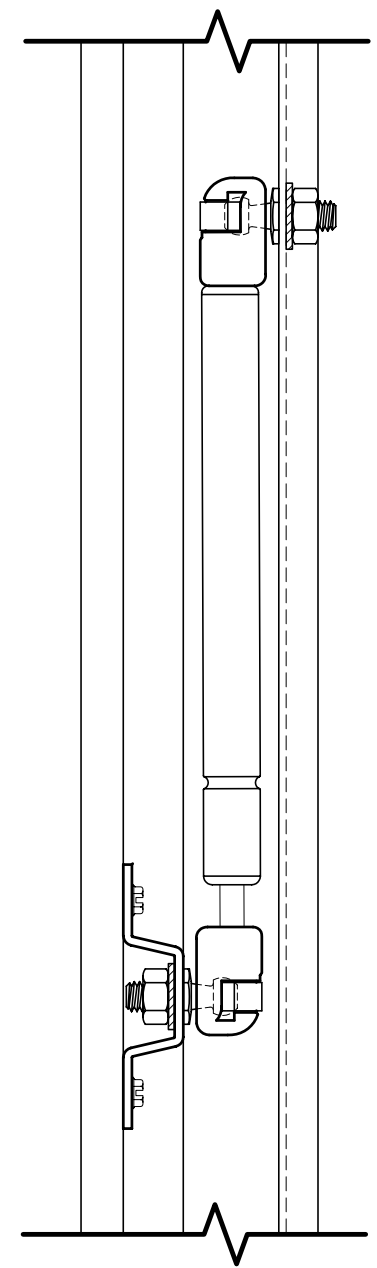
2Part 6" Single Face Body
Part #1926

2Part Large Inner Frame
Part #1959

2Part Large Outer Frame
Part #1941



A SECTION VIEW (INSIDE SIDE)
SCALE : 1/2"=1"



B SECTION VIEW (FACE VIEW)
SCALE : 1/2"=1"

