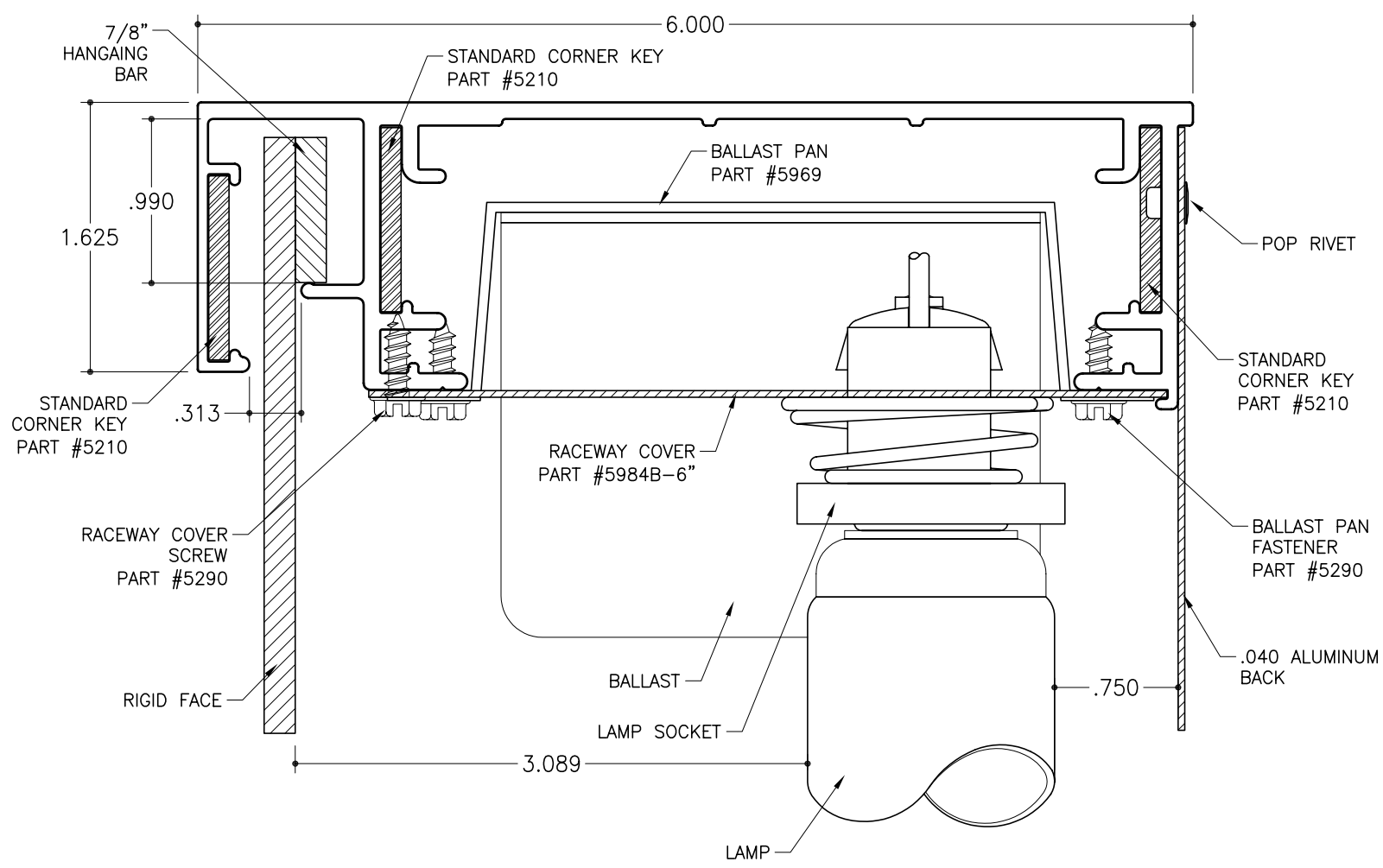


STD-20 for Rigid Faces - Electrical

- 1Part 6" Single Face Body
Part #1921
- 2Part 6" Single Face Body
Part #1926
- 2Part Retainer
Part #1944



SECTION DETAIL - ELECTRICAL
SCALE : 1"=1"

GENERAL NOTES:

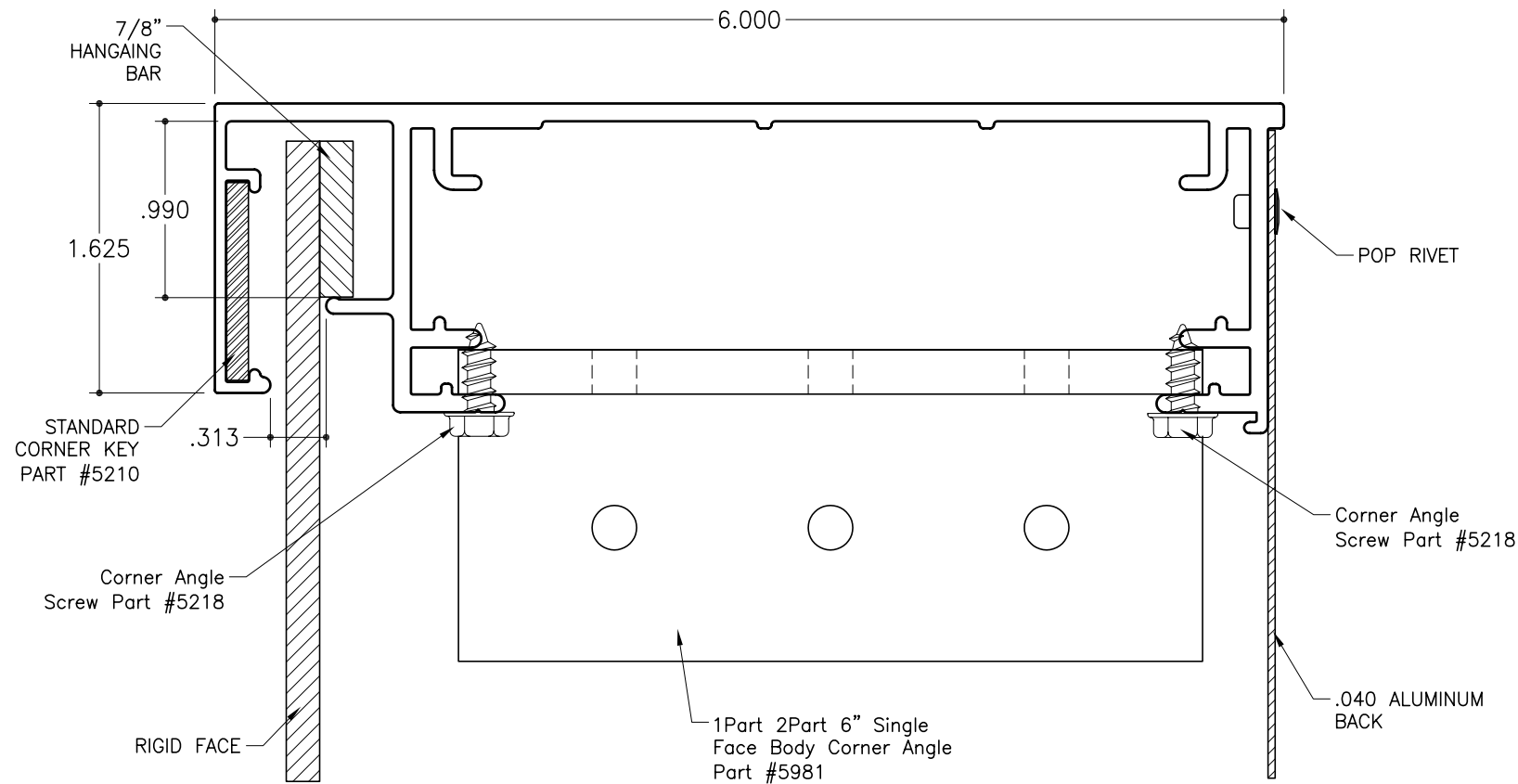
1. Lamping - The bodies and retainers should be cut 1-3/4" longer than the nominal lamp size for horizontal or vertical lamping.
 General Lamping Guidelines:
 Double the distance between the front of the lamp and the back of the plastic face for your center to center lamp spacing. Maximum center to center is 12".
2. Hanging Bar - It is recommended to use a hanging bar on all rigid face.
3. SignComp does not supply the ballast(s), lamp(s), lamp sockets, back supports, gussets or .040 aluminum back.

STD-20 for Rigid Faces - Mechanically Fastened

1Part 6" Single Face Body
Part #1921

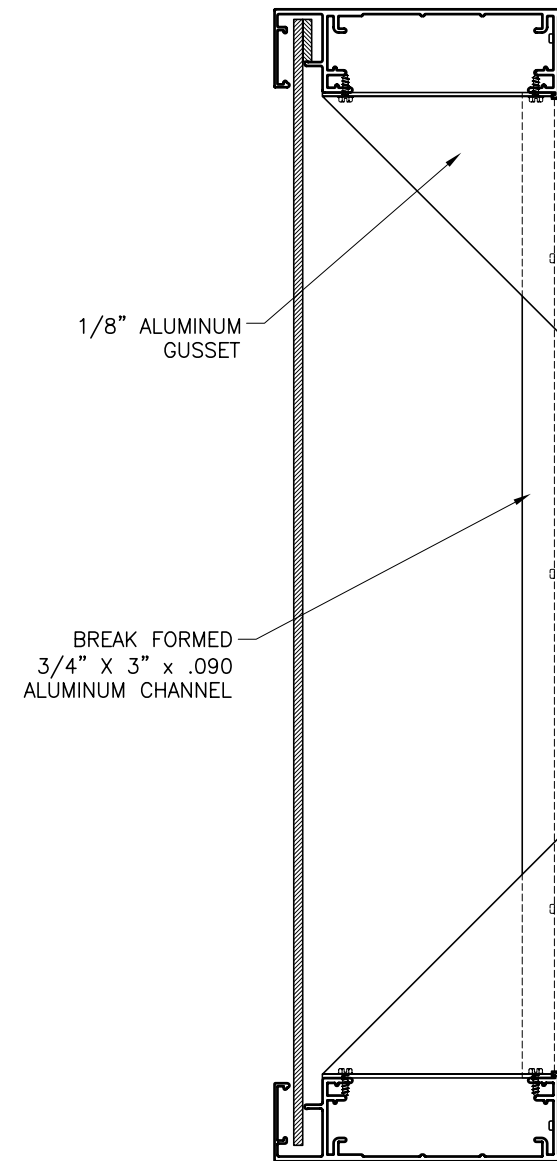
2Part 6" Single Face Body
Part #1926

2Part Retainer
Part #1944



SECTION DETAIL - MECHANICALLY FASTENED

SCALE : 1"=1"



BRACING DETAIL

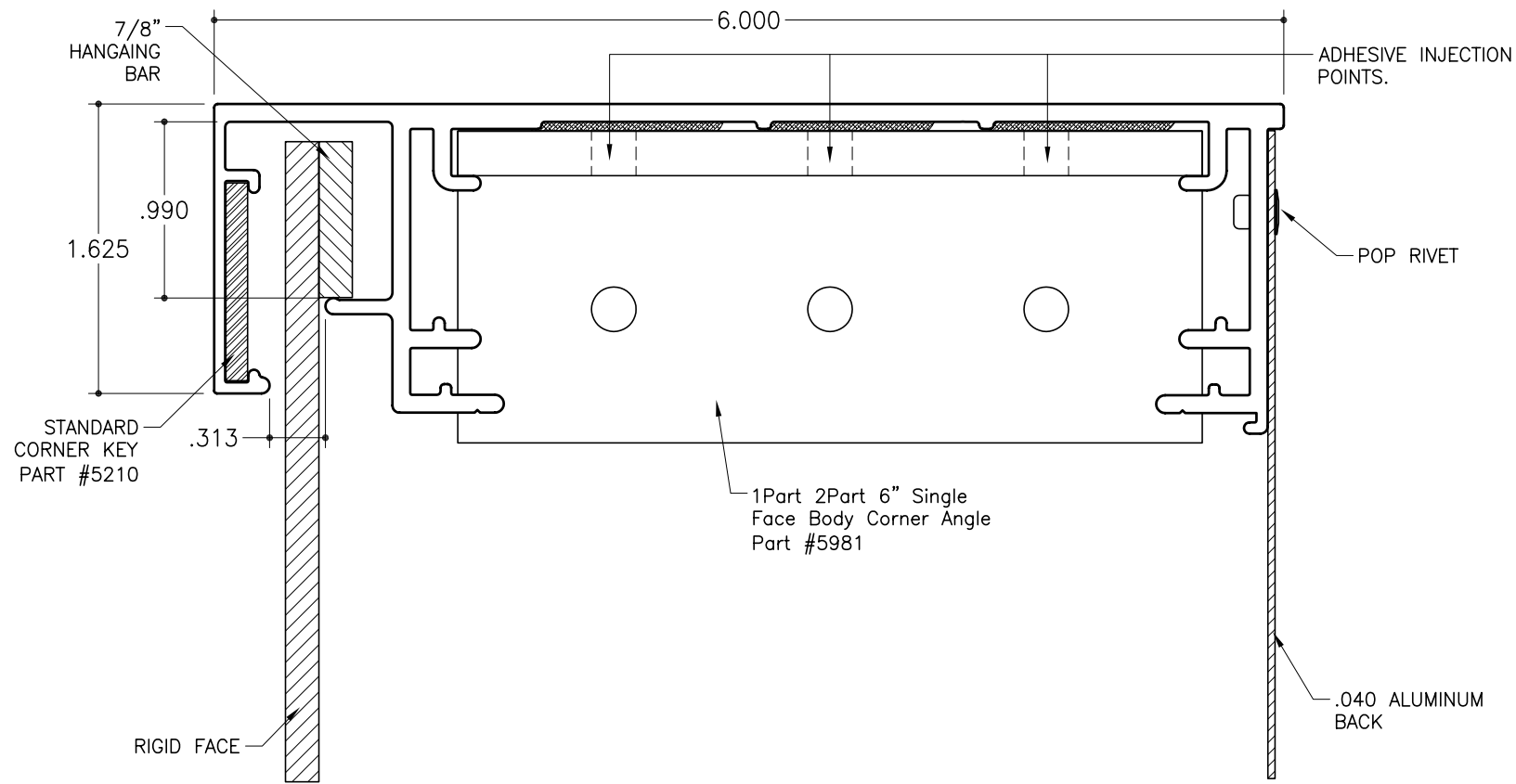
SCALE : 3"=1'

GENERAL NOTES:

1. Lamping - The bodies and retainers should be cut 1-3/4" longer than the nominal lamp size for horizontal or vertical lamping.
 General Lamping Guidelines:
 Double the distance between the front of the lamp and the back of the plastic face for your center to center lamp spacing. Maximum center to center is 12".
2. Hanging Bar - It is recommended to use a hanging bar on all rigid face.
3. SignComp does not supply the ballast(s), lamps, lamp sockets, back supports, gussets or .040 aluminum back.

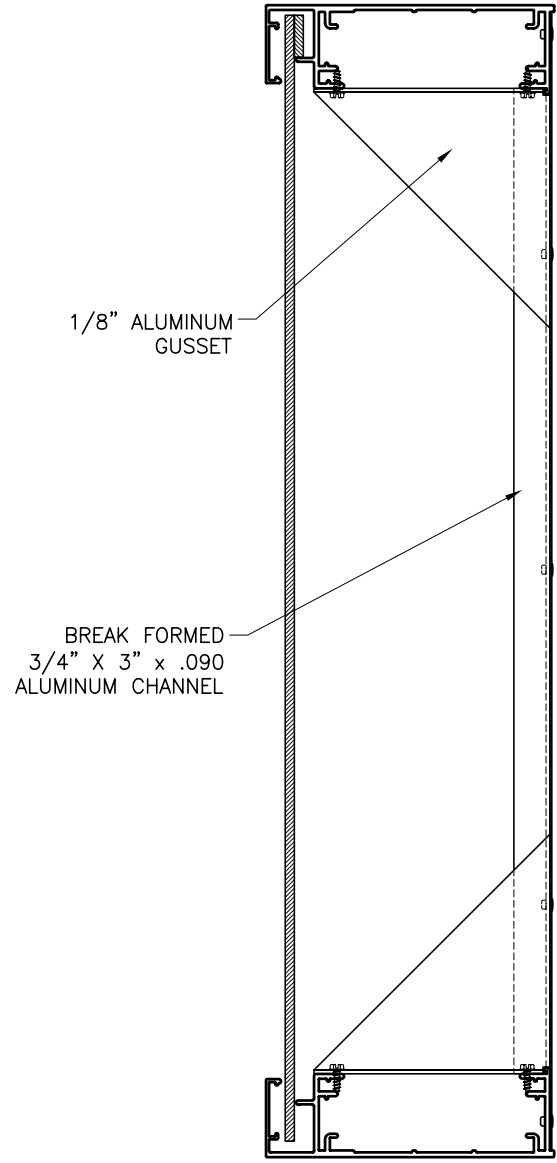
STD-20 for Rigid Faces - Adhesive Bonded

- 1Part 6" Single Face Body
Part #1921
- 2Part 6" Single Face Body
Part #1926
- 2Part Retainer
Part #1944



SECTION DETAIL - ADHESIVE BONDED

SCALE : 1"=1"



BRACING DETAIL

SCALE : 3"=1'

GENERAL NOTES:

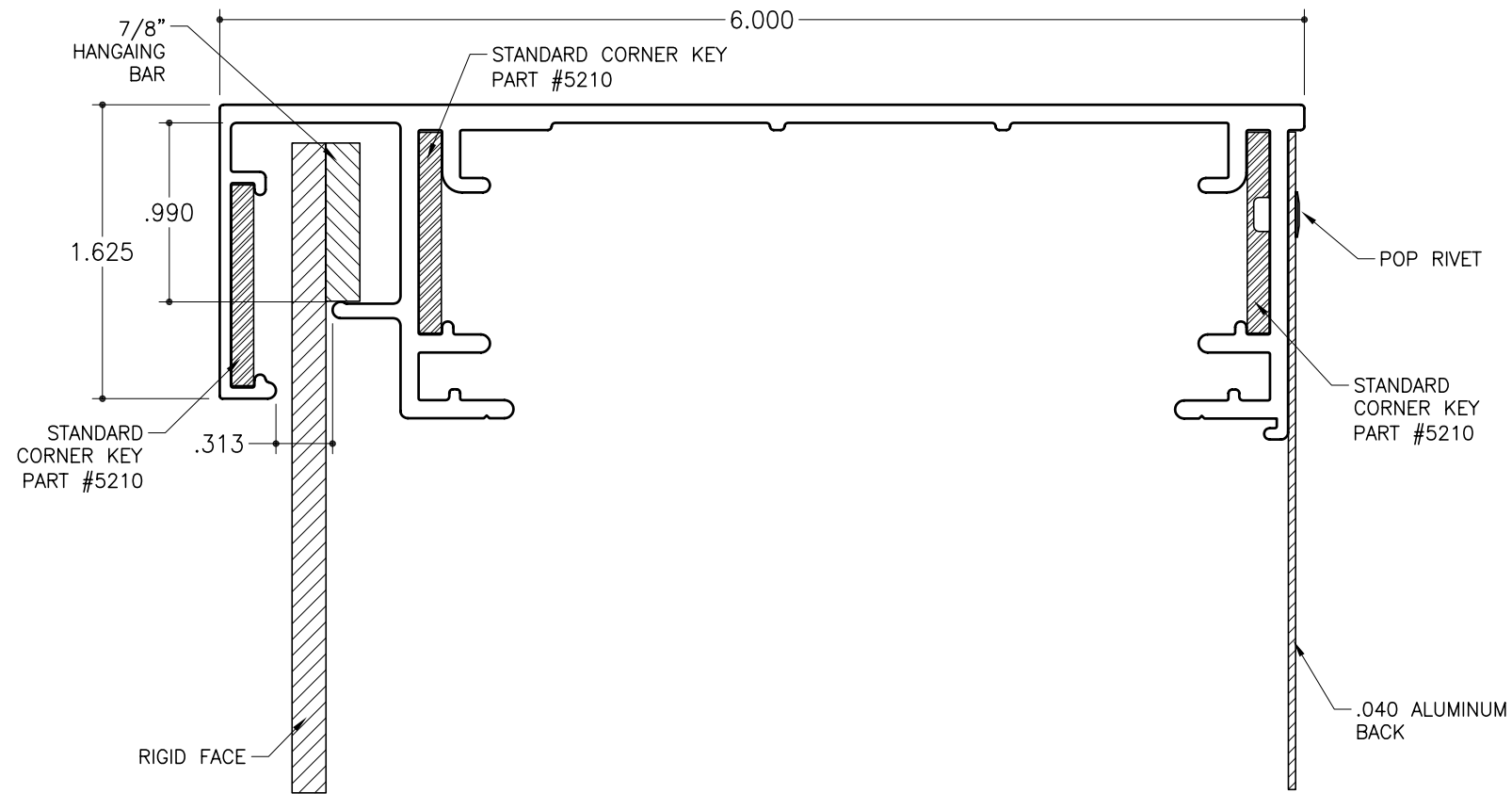
1. Lamping - The bodies and retainers should be cut 1-3/4" longer than the nominal lamp size for horizontal or vertical lamping.
 General Lamping Guidelines:
 Double the distance between the front of the lamp and the back of the plastic face for your center to center lamp spacing. Maximum center to center is 12".
2. Hanging Bar - It is recommended to use a hanging bar on all rigid face.
3. SignComp does not supply the ballast(s), lampss, lamp sockets, back supports, gussets or .040 aluminum back.

STD-20 for Rigid Faces - Welded

1Part 6" Single Face Body
Part #1921

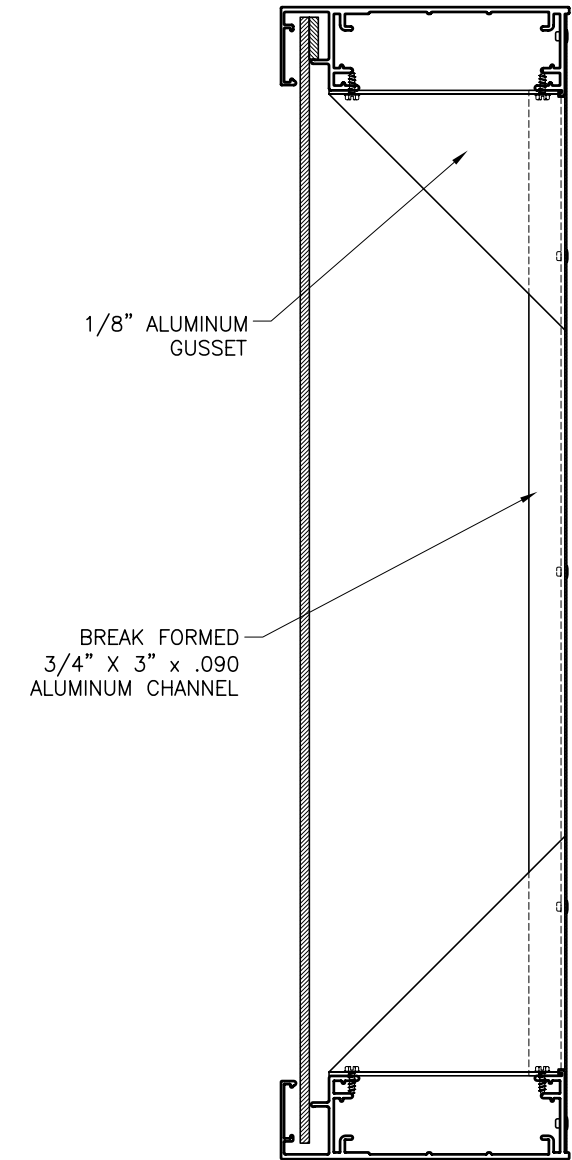
2Part 6" Single Face Body
Part #1926

2Part Retainer
Part #1944



SECTION DETAIL - WELDED

SCALE : 1"=1"



BRACING DETAIL

SCALE : 3"=1'

GENERAL NOTES:

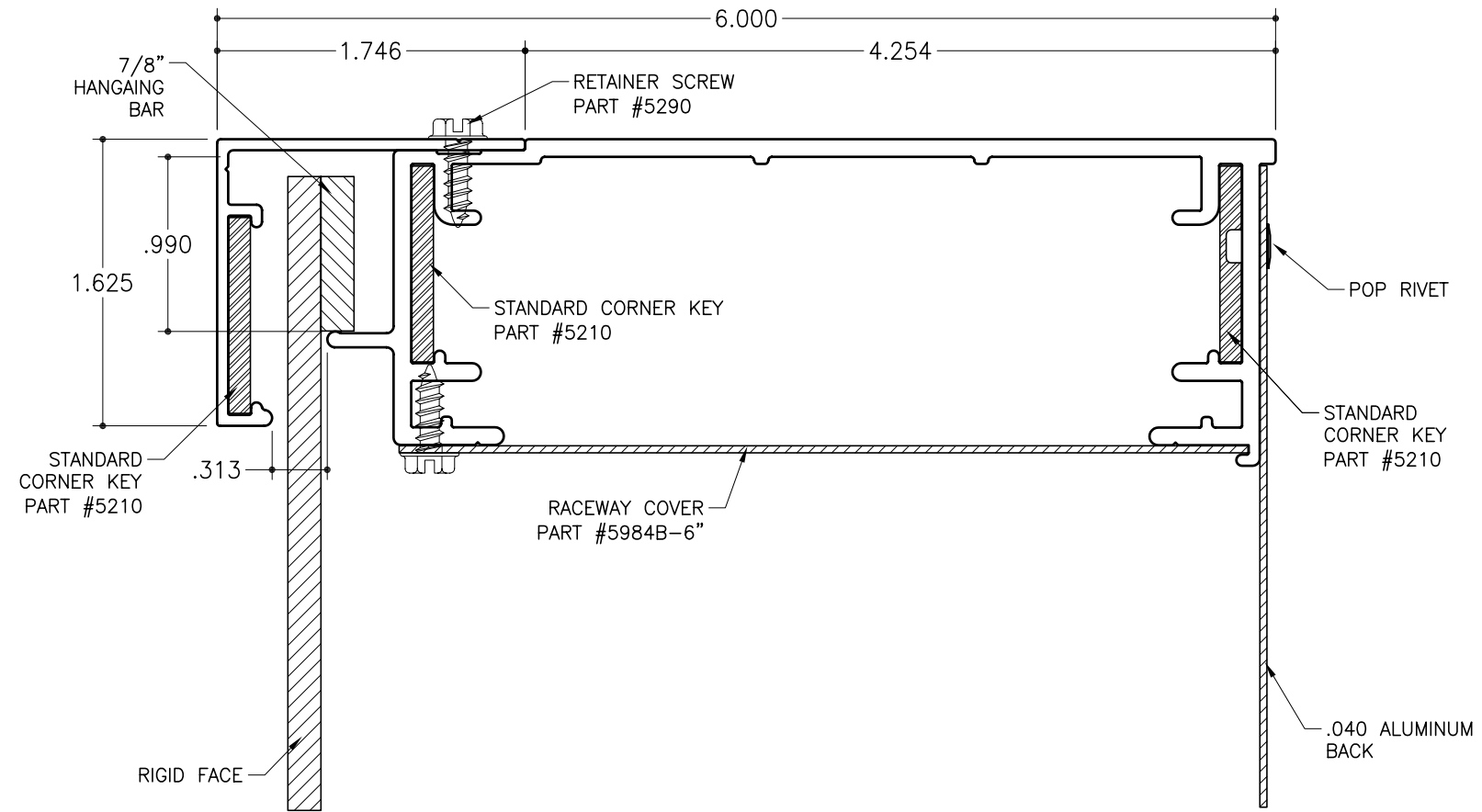
1. Lamping - The bodies and retainers should be cut 1-3/4" longer than the nominal lamp size for horizontal or vertical lamping.
General Lamping Guidelines:
Double the distance between the front of the lamp and the back of the plastic face for your center to center lamp spacing. Maximum center to center is 12".
2. Hanging Bar - It is recommended to use a hanging bar on all rigid face.
3. SignComp does not supply the ballast(s), lamps, lamp sockets, back supports, gussets or .040 aluminum back.

STD-20 for Rigid Faces - Removeable Retainer

1Part 6" Single Face Body
Part #1921

2Part 6" Single Face Body
Part #1926

2Part Retainer
Part #1944



SECTION DETAIL - REMOVEABLE RETAINER

SCALE : 1"=1"

GENERAL NOTES:

1. Lamping - The bodies and retainers should be cut 1-3/4" longer than the nominal lamp size for horizontal or vertical lamping.

General Lamping Guidelines:

Double the distance between the front of the lamp and the back of the plastic face for your center to center lamp spacing. Maximum center to center is 12".

2. Hanging Bar - It is recommended to use a hanging bar on all rigid face.

3. SignComp does not supply the ballast(s), lamps, lamp sockets, back supports, gussets or .040 aluminum back.