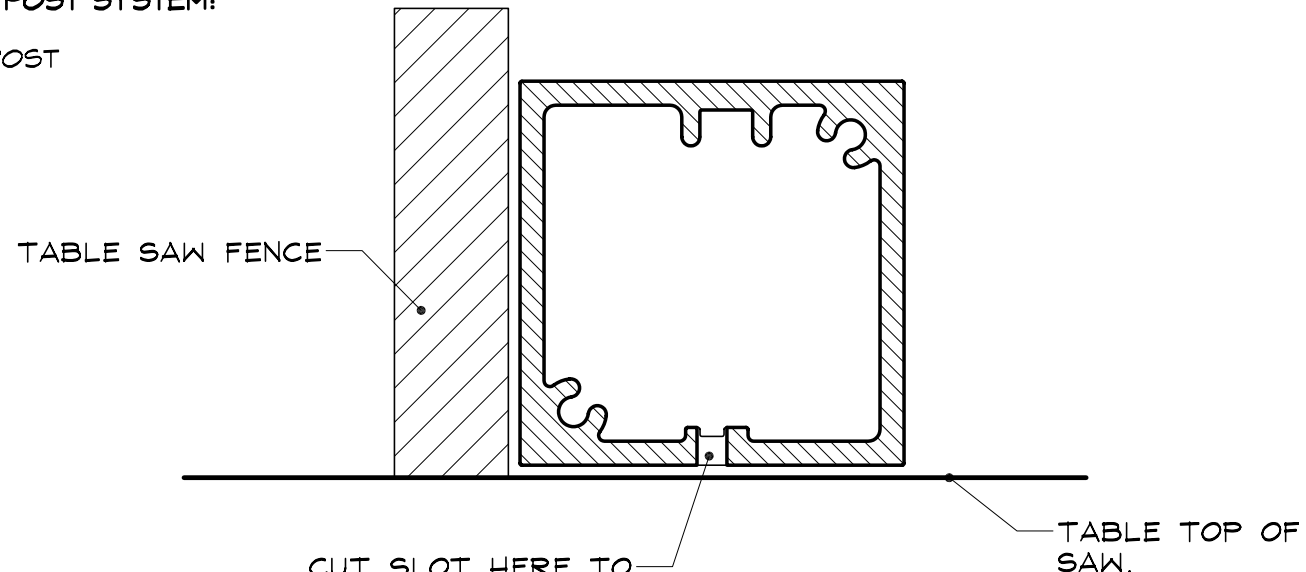


SERIES 1 - 1/8" FACE & POST SYSTEM:

SERIES 1 2" SQUARE POST
 PART #1000

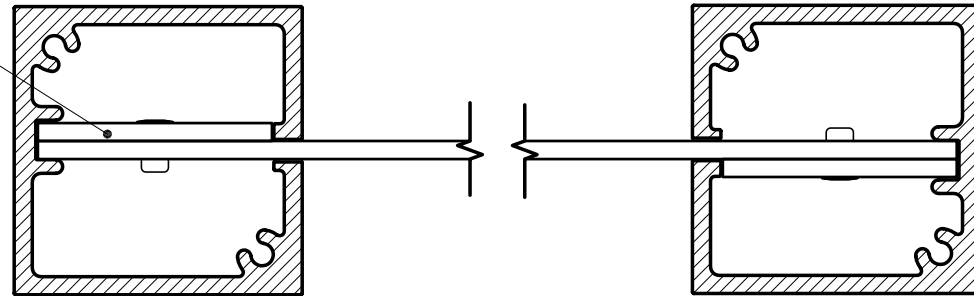


CUT SLOT HERE TO ACCEPT THE DESIRED HEIGHT OF PANEL.
 (BLADE THICKNESS 5/32" MIN. - 3/16" MAX. FOR SLOTTING.)

SLOTING LAYOUT INSTRUCTIONS

SCALE : 1" = 1"

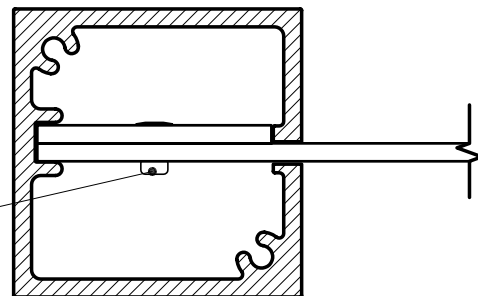
DOUBLE POST APPLICATIONS PLACE LOCKING STRIPS ON THE OPPOSITE SIDES.



DOUBLE POST DISPLAY

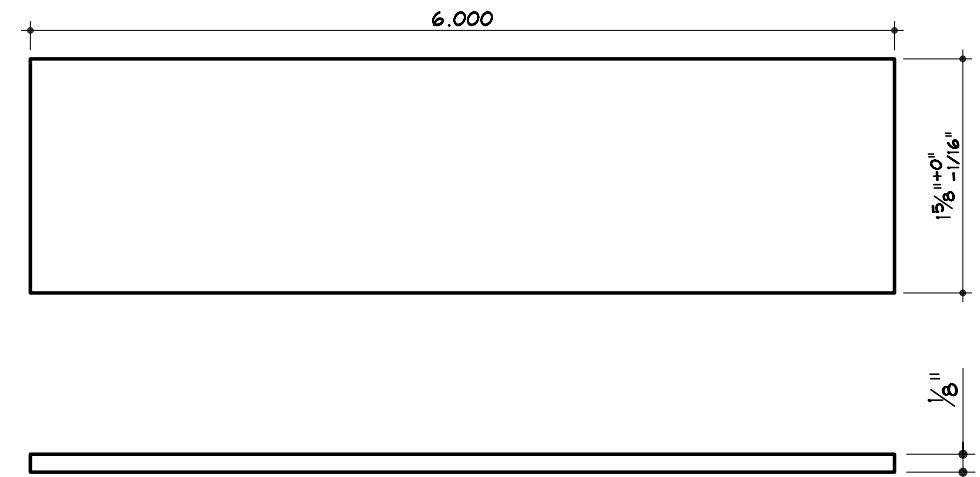
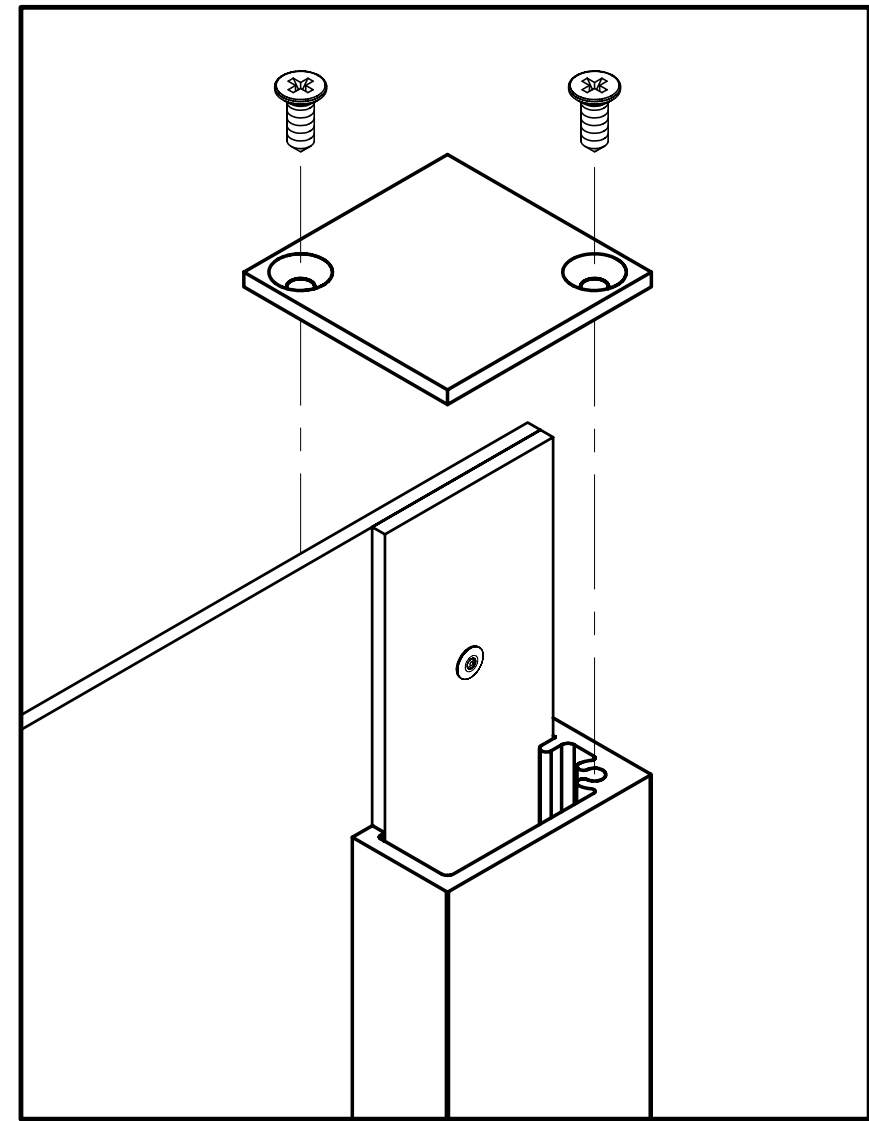
SCALE : 3/4" = 1"

RIVET, SCREW OR GLUE LOCKING STRIPS TO PANEL.
 (NOTE: 2 RIVETS OR SCREWS PER LOCKING STRIP.)



SINGLE POST DISPLAY

SCALE : 3/4" = 1"



LOCKING STRIP DETAIL

SCALE : 3/4" = 1"

SER 1 - 1000-1