

2



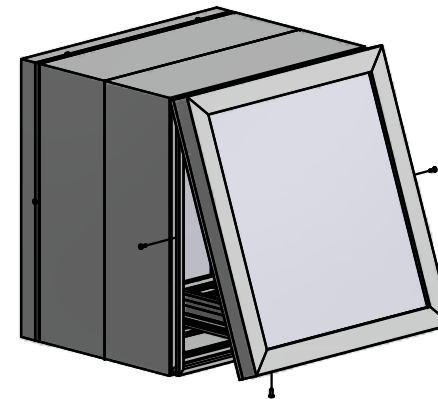
1

PARTS LIST

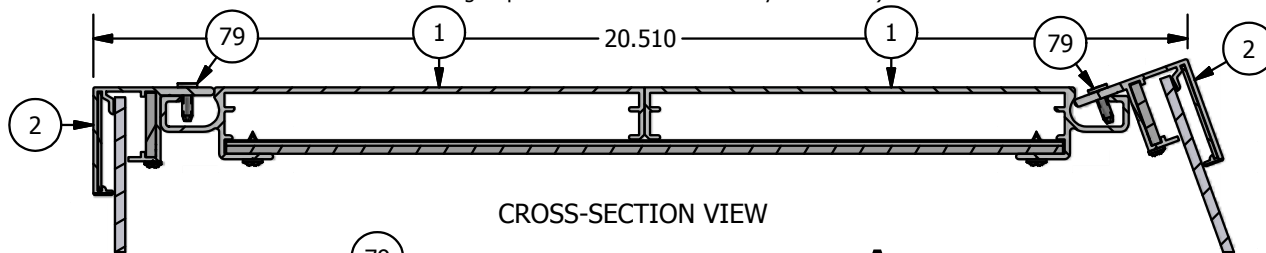
ITEM	PART #	DESCRIPTION	NOTES
1	2009	Flat 2 Piece Double Face Body	Assembly
2	2047	Flat 2" Retainer	Assembly
79	5178	Hinge Screw - #10 x 5/8" pancake head	Pre-drill 5/32" pilot hole every 36" - Top only
80	5178	Closure Screw - #10 x 5/8" pancake head	Pre-drill 5/32" pilot hole every 48" - Sides & Bottom

NOTE: PRE-CUT KITS ARE NOT PRE-DRILLED.

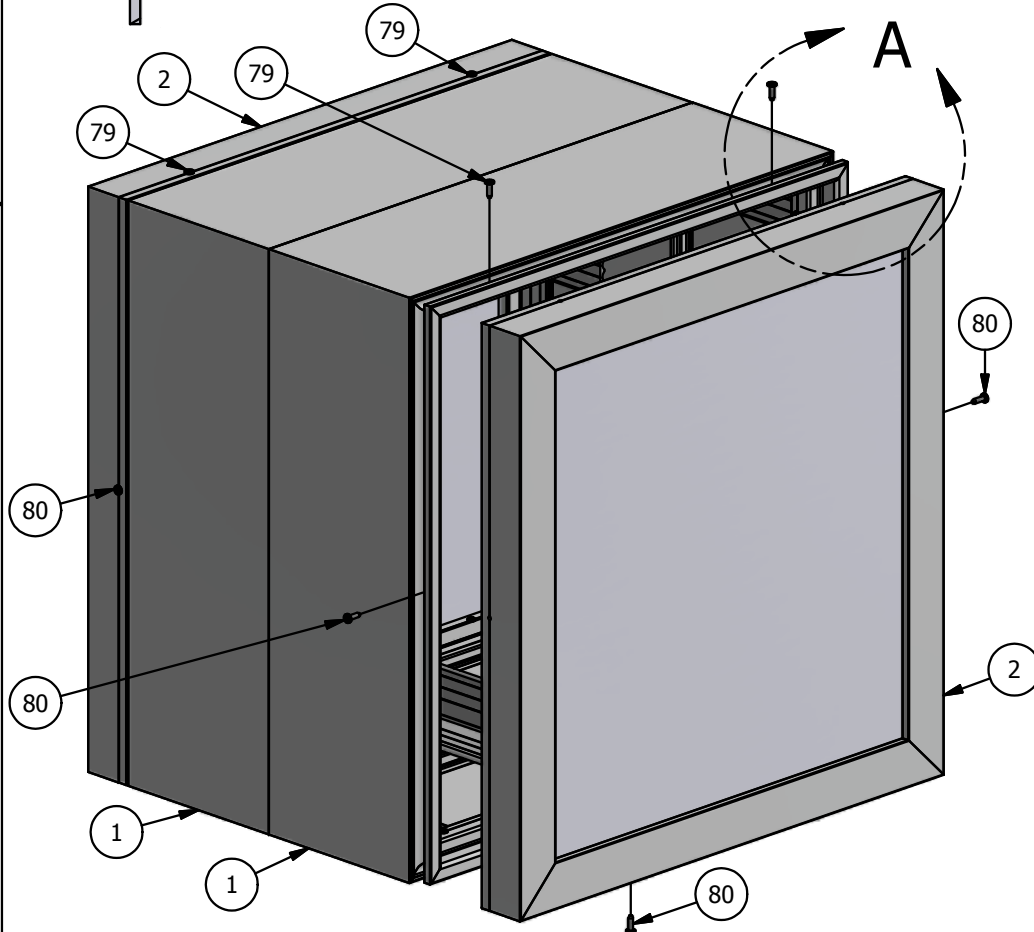
(Holes shown in this drawing are for reference only.
Drilling of pilot holes are to be done by fabricator.)



B

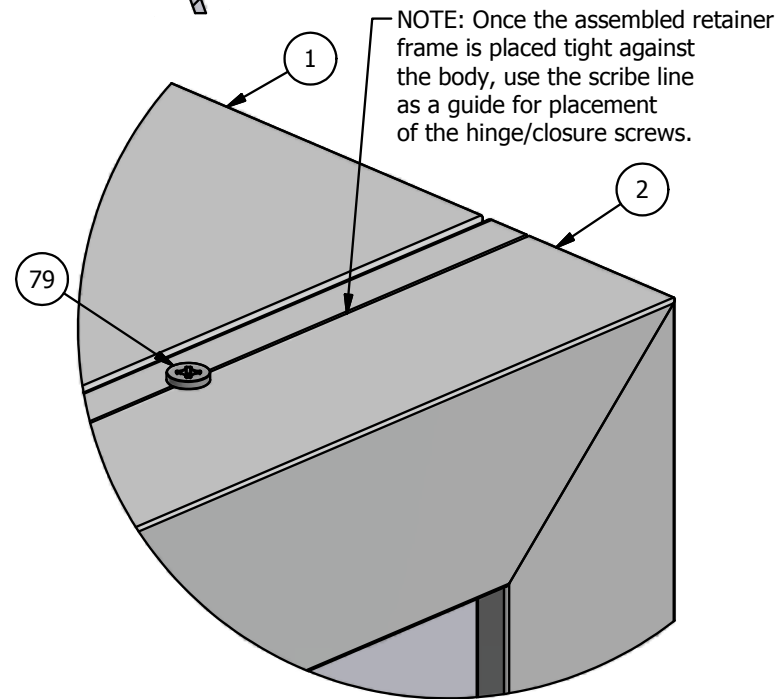


CROSS-SECTION VIEW



A

A



DETAIL A

NOTE: Once the assembled retainer frame is placed tight against the body, use the scribe line as a guide for placement of the hinge/closure screws.

Ship To;
Sales Order #

2



1

THIS DRAWING WAS CREATED AT NO CHARGE TO ASSIST YOU IN VISUALIZING OUR PROPOSAL. THE DRAWING HEREIN IS THE PROPERTY OF SIGNCOMP. PERMISSION TO COPY OR REVISE THIS DRAWING OR TO USE THIS DRAWING FOR PRODUCTION IS STRICTLY PROHIBITED AND CAN ONLY BE COPIED, REVISED OR USED FOR PRODUCTION WITH THE EXPRESSED WRITTEN PERMISSION OF SIGNCOMP.

Part Name: Flat 2 Piece Double Face Body w/ Flat 2" Retainer

Part Number: K2009/2047

Revision: 5/7/2015

Drawing By: SBreihof

Sheet: 1 of 1

Size: A

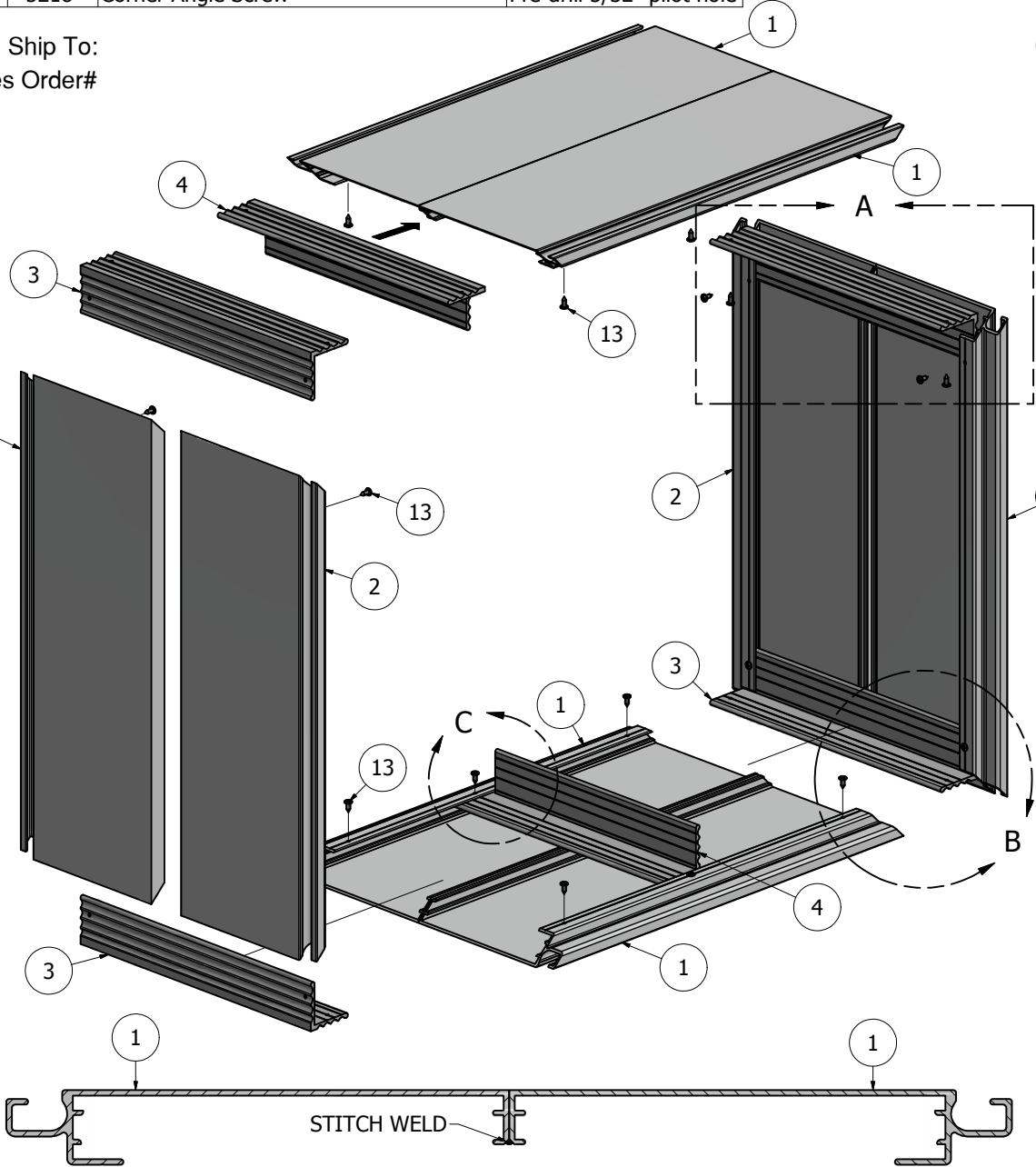
SignComp

A

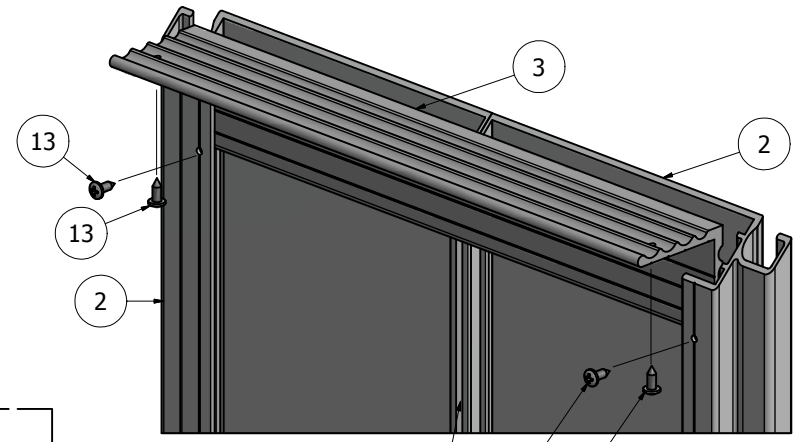
B

PARTS LIST			
ITEM	PART #	DESCRIPTION	NOTES
1	2009	Flat 2PC Double Face Body	Top & Bottom
2	2009	Flat 2PC Double Face Body	Sides
3	5909	Flat 2PC Double Face Body Corner Angle	One (1) per corner
4	5909	Flat 2PC Double Face Body Corner Angle	Notched by Other
13	5218	Corner Angle Screw	Pre-drill 5/32" pilot hole

Ship To:
Sales Order#

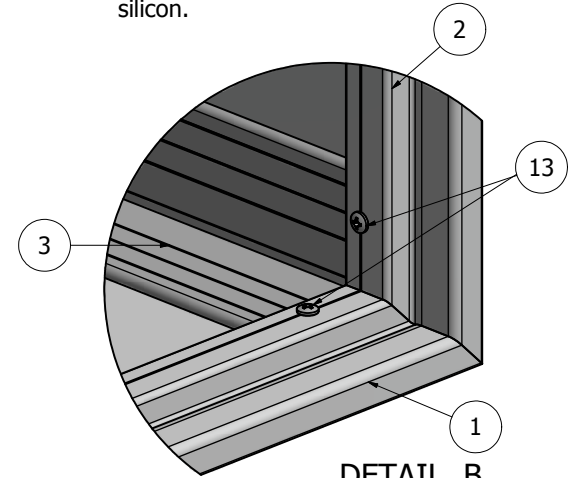


CROSS-SECTION VIEW



NOTE: Stitch weld the body joint then fill in the gaps between the welds with a bead of silicon.

DETAIL A



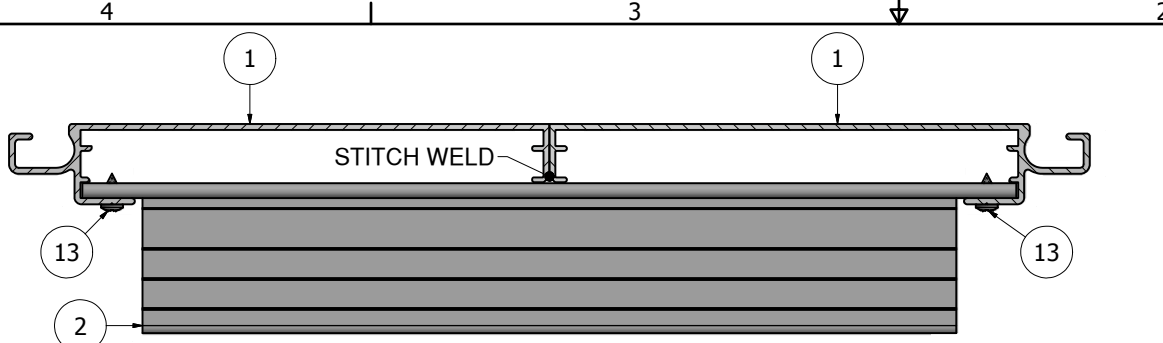
DETAIL B ASSEMBLED

NOTE: PRE-CUT KITS ARE NOT PRE-DRILLED.
(Holes shown in this drawing are for reference only. Drilling of pilot holes are to be done by fabricator.)

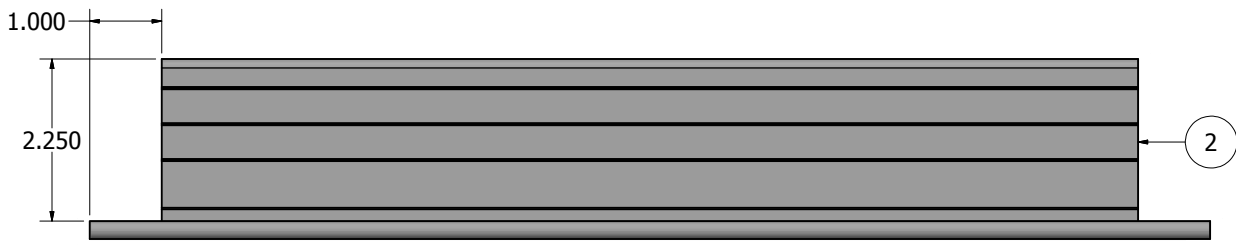
THIS DRAWING WAS CREATED AT NO CHARGE TO ASSIST YOU IN VISUALIZING OUR PROPOSAL. THE DRAWING HEREIN IS THE PROPERTY OF SIGNCOMP. PERMISSION TO COPY OR REVISE THIS DRAWING OR TO USE THIS DRAWING FOR PRODUCTION IS STRICTLY PROHIBITED AND CAN ONLY BE COPIED, REVISED OR USED FOR PRODUCTION WITH THE EXPRESSED WRITTEN PERMISSION OF SIGNCOMP.

DRAWING BY:	SBreihof	8/14/2013
Centroid X:	0.000 in	
Centroid Y:	0.000 in	
Principal Moments Ix:	0.000 in ⁴	
Principal Moments Iy:	0.000 in ⁴	
Section Modulus Ix:	0.000 in ³	
Section Modulus Iy:	0.000 in ³	

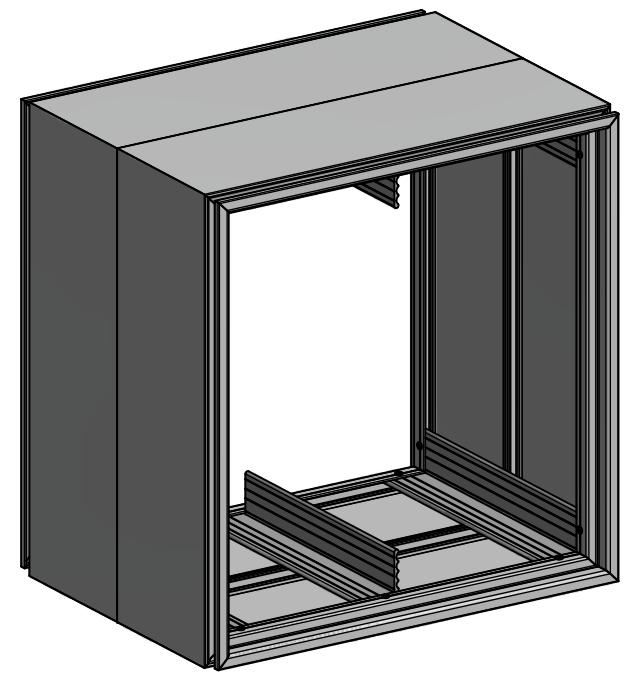
<h1>SignComp</h1>		TITLE
		Flat 2PC Double Face Body - Assembly
PART NO	K2009	REV
SHEET 1 OF 2		



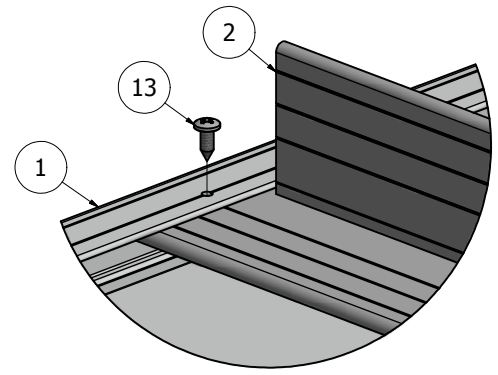
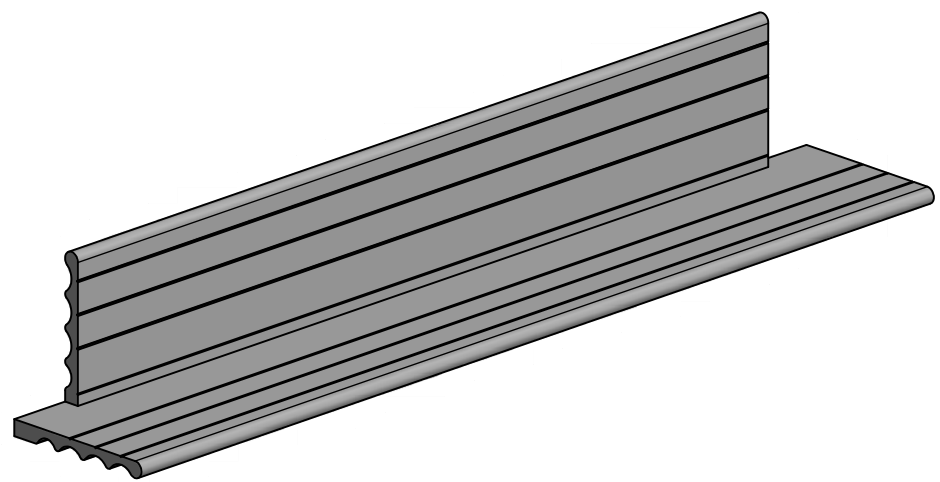
TOP & BOTTOM CROSS-SECTION VIEW
AT BODY BRACE



NOTE: NOTCH BOTH ENDS OF THE ANGLE ABOVE TO BYPASS THE INNER BODY FLANGES. THIS SERVES AS A BRACE TO PROVIDE ADDITIONAL SUPPORT TO THE JOINED BODY SECTIONS.



NOTE: BRACES SHOULD BE SPACED A MIN. OF 48" ON CENTER.



DETAIL C

THIS DRAWING WAS CREATED AT NO CHARGE TO ASSIST YOU IN VISUALIZING OUR PROPOSAL. THE DRAWING HEREIN IS THE PROPERTY OF SIGNCOMP. PERMISSION TO COPY OR REVISE THIS DRAWING OR TO USE THIS DRAWING FOR PRODUCTION IS STRICTLY PROHIBITED AND CAN ONLY BE COPIED, REVISED OR USED FOR PRODUCTION WITH THE EXPRESSED WRITTEN PERMISSION OF SIGNCOMP.

DRAWING BY:	SBreihof	8/14/2013	SignComp
Centroid X:	0.000 in		
Centroid Y:	0.000 in		
Principal Moments Ix:	0.000 in ⁴		
Principal Moments Iy:	0.000 in ⁴		
Section Modulus Ix:	0.000 in ³		TITLE
Section Modulus Iy:	0.000 in ³		Flat 2PC Double Face Body - Assembly
PART NO			REV
			K2009
			SHEET 2 OF 2

PARTS LIST			
ITEM	PART	DESCRIPTION	NOTES
1	2009	Flat 2PC Double Face Body	All Sides
2	5909	Flat 2PC Double Face Body Corner Angle	Notched by Other
13	5218	Corner Angle Screw	Pre-drill 5/32" pilot hole

2

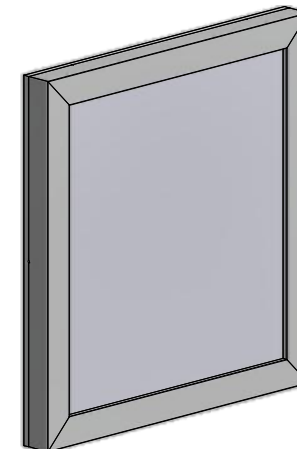
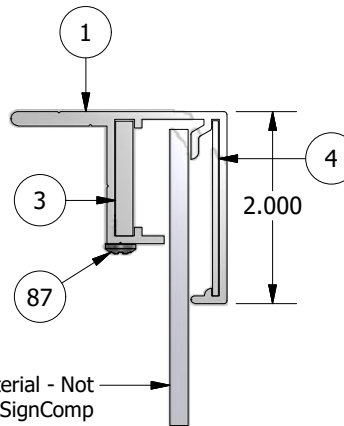
1

PARTS LIST

ITEM	PART #	DESCRIPTION	NOTES
1	2047	Flat 2" Retainer	Top & Bottom Retainers
2	2047	Flat 2" Retainer	Sides
3	5214	Flat 2" Frame Corner Bracket	
4	5214	Flat 2" Frame Corner Key	
87	5195	Flat Frame Corner Bracket Screw	#8 x 5/16" - Pre-drill 1/8" holes Four (4) per corner

NOTE: PRE-CUT KITS ARE NOT PRE-DRILLED.

(Holes shown in this drawing are for reference only.
Drilling of pilot holes are to be done by fabricator.)

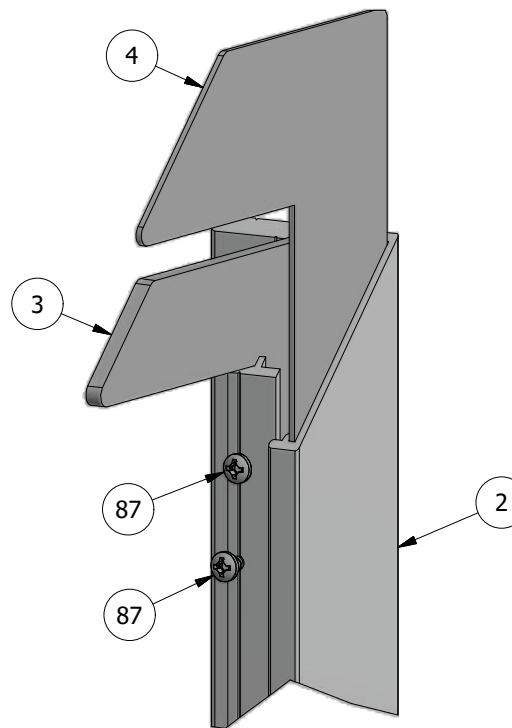
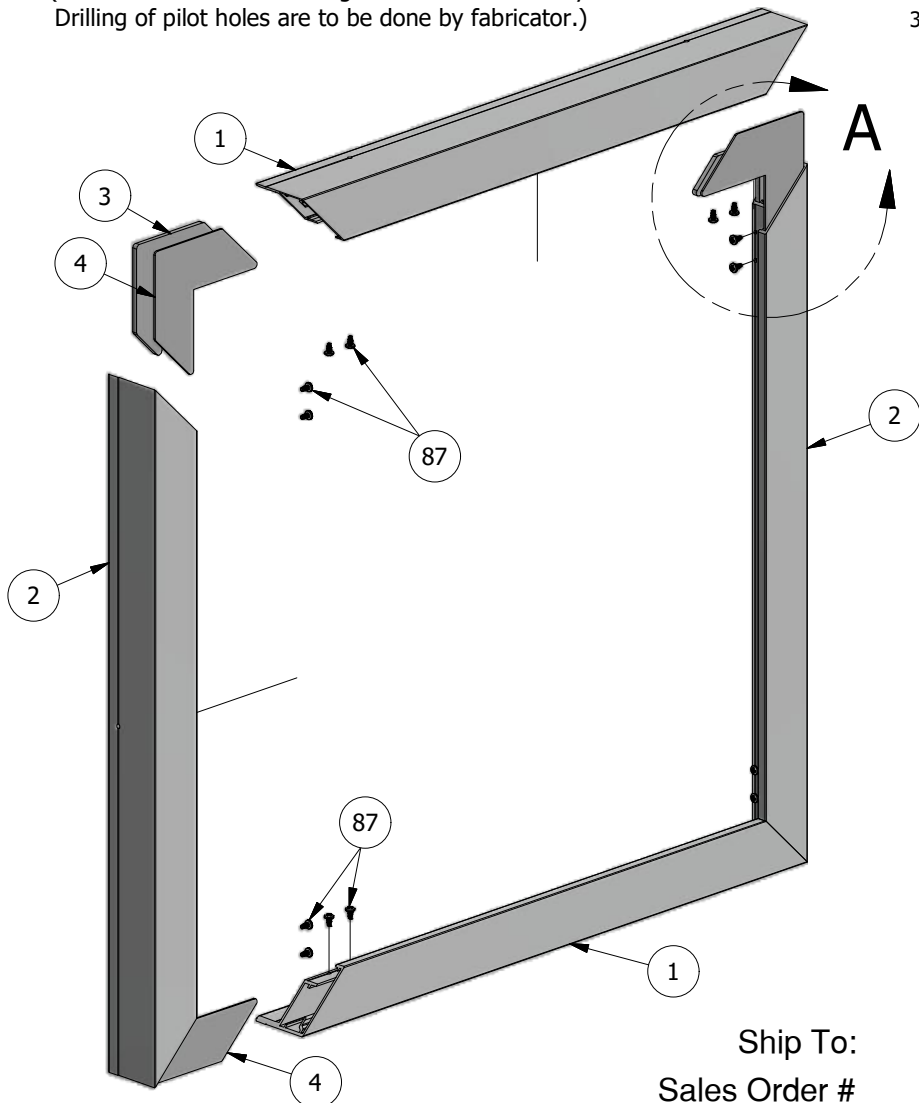


3/16" Face Material - Not provided by SignComp

CROSS-SECTION VIEW

B

B



DETAIL A

Ship To:
Sales Order #

2

1

THIS DRAWING WAS CREATED AT NO CHARGE TO ASSIST YOU IN VISUALIZING OUR PROPOSAL. THE DRAWING HEREIN IS THE PROPERTY OF SIGNCOMP. PERMISSION TO COPY OR REVISE THIS DRAWING OR TO USE THIS DRAWING FOR PRODUCTION IS STRICTLY PROHIBITED AND CAN ONLY BE COPIED, REVISED OR USED FOR PRODUCTION WITH THE EXPRESSED WRITTEN PERMISSION OF SIGNCOMP.

Part Name: Flat 2" Retainer	Revision: 2047	Date: 4/27/2015	Sheet: 1 of 1	Size: A
	Part Number: 2047	Revision: 2047	Sheet: 1 of 1	Size: A
Drawing By: SBreihof				



A

A