

RTS - Post & Panel System (Powder Coat Finish)

READY TO SHIP



Flagmount

Double Post Mount
(2 Posts Required)



Double Post Mount (3-1/4" Square Post shown)
(2 Posts Required)

Note: All mounting provisions to be provided by fabricator.

Square Post

96" Post

Part #RTS-1015-8 WHT

Part #RTS-1015-8 BLK

144" Post

Part #RTS-1015-12 WHT

Part #RTS-1015-12 BLK

Round Post

96" Post

Part #RTS-1017-8 WHT

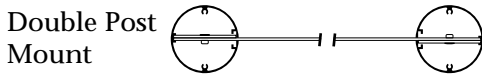
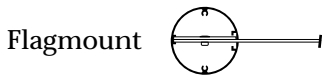
Part #RTS-1017-8 BLK

144" Post

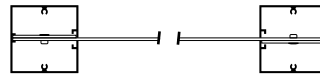
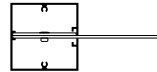
Part #RTS-1017-12 WHT

Part #RTS-1017-12 BLK

3-1/4" Round Post



3-1/4" Square Post



Available in powder coated gloss white and gloss black finishes, 96" and 144" posts.

Each 96" and 144" RTS Post Kit includes:

- 48" slot to accommodate up to a 48" high, 1/8" or 3mm panel.
- One (1) adjustable, 48" aluminum Post Filler to accommodate a panel less than 48" high.
- One (1) 1/8" aluminum Post Cap with two (2) countersunk cap screws.
- One (1) 96" adjustable 96" Panel Trim for 1/8" or 3mm hollow core panel material.
- Two (2) 6" Locking Strips.
- One (1) 96" or 144" powder coated gloss white or gloss black RTS Post.

NOTE: Face material not included.

List Price Per Single Post (2 post kits required for double post mount)

Ball Finial

Ball Finial w/ Square Cap
(Cap Screws and Threaded Insert Included)

Part #RTS-5700F WHT

Part #RTS-5700F BLK

Ball Finial w/ Round Cap
(Cap Screws and Threaded Insert Included)

Part #RTS-5701F WHT

Part #RTS-5701F BLK

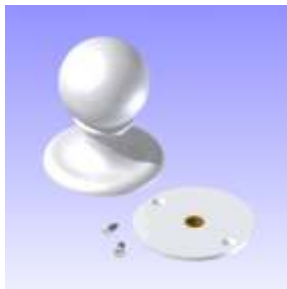
NOTE: Caps are slightly oversized.

Optional Accessories



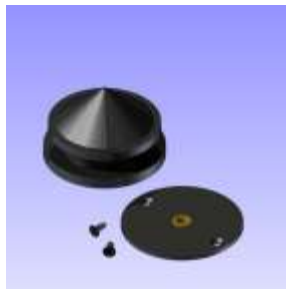
Ball Finial Kit
w/Square Cap

White - Part #RTS-5700F WHT
Black - Part #RTS-5700F BLK



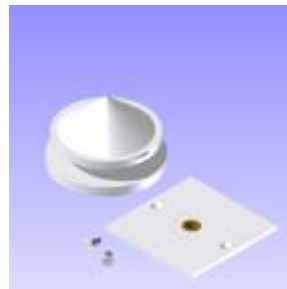
Ball Finial Kit
w/Round Cap

White - Part #RTS-5701F WHT
Black - Part #RTS-5701F BLK



Tapered Ring Finial Kit
w/Round Cap

White - Part #RTS-5703F WHT
Black - Part #RTS-5703F BLK



Tapered Ring Finial Kit
w/Square Cap

White - Part #RTS-5702F WHT
Black - Part #RTS-5702F BLK

Tapered Ring Finial

Tapered Ring Finial
w/ Square Cap

(Cap Screws and Threaded Insert Included)

Part #RTS-5702F WHT

Part #RTS-5702F BLK

Tapered Ring Finial
w/ Round Cap

(Cap Screws and Threaded Insert Included)

Part #RTS-5703F WHT

Part #RTS-5703F BLK

NOTE: Caps are slightly oversized.

Finial Kit Includes: Finial with 1/4" threaded stud, Cap with 1/4" threaded insert and two (2) Cap Screws.