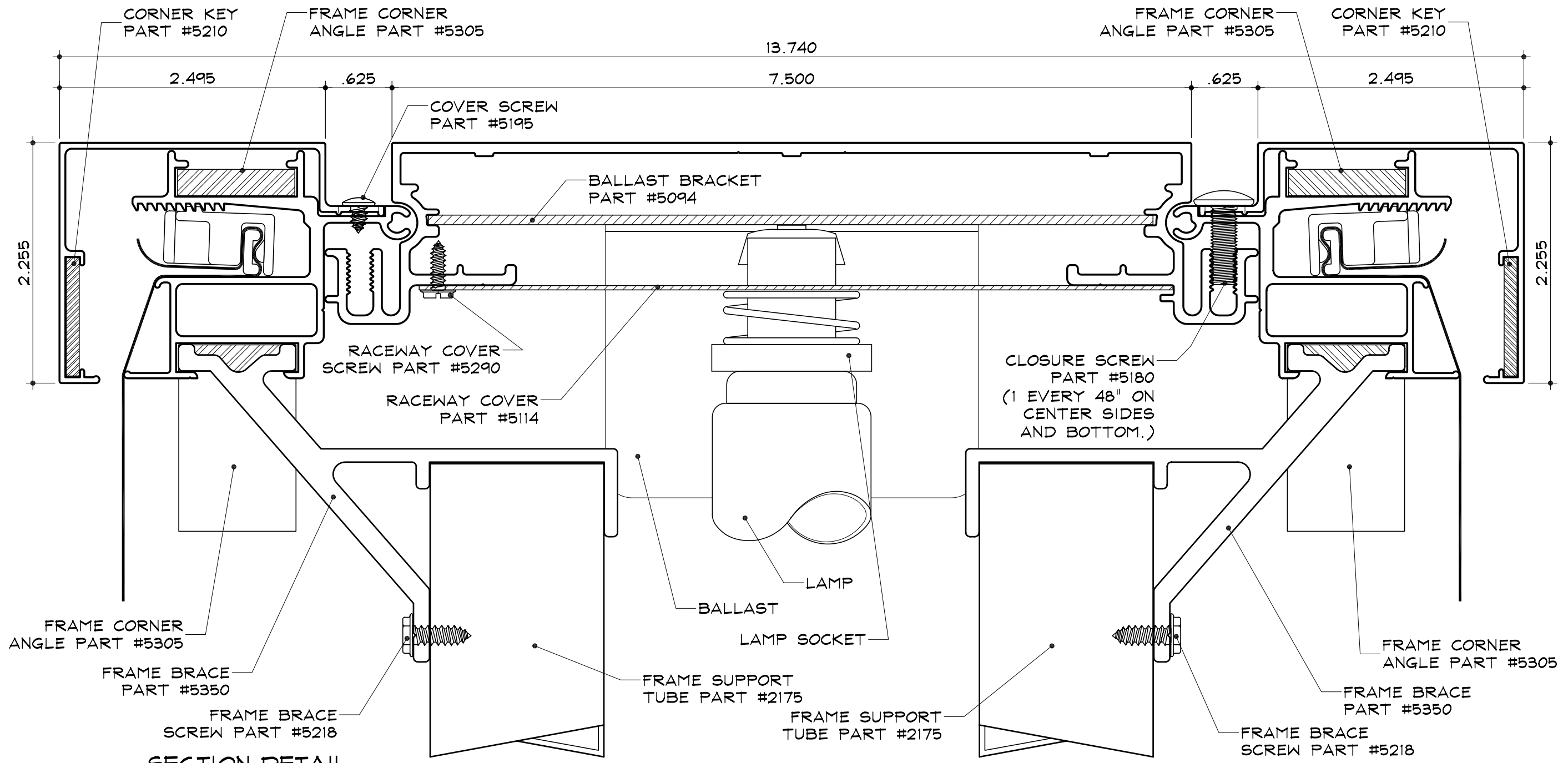


SC-10 for Flex Faces - Electrical

Medium Body  
 Part #2015

Dual Frame  
 Part #2065

2 1/4" Dual Frame Cover  
 Part #2075

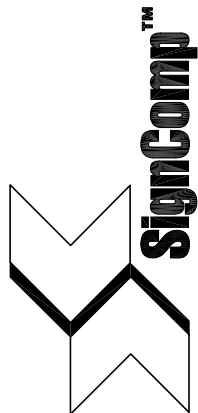


**SECTION DETAIL**

SCALE : 1" = 1"

NOTES:

1. Add 1" to size of cabinet (vertical or horizontal) when the size of the cabinet is the same as the nominal lamp length.
2. SignComp does not supply the Ballast(s), Lamps, or Lamp Sockets.

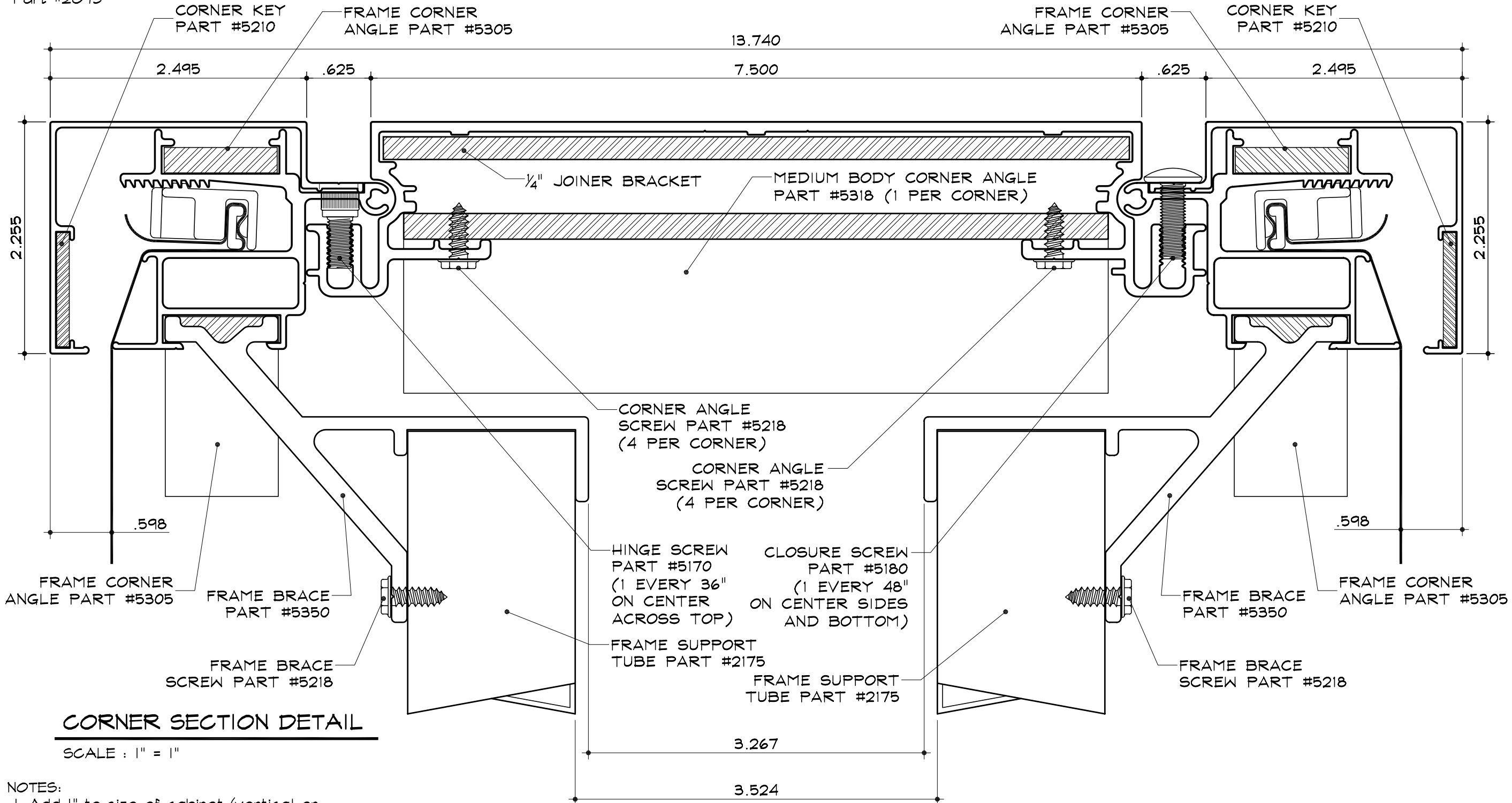


SC-10 for Flex Faces - Structural (Corner)

Medium Body  
 Part #2015

Dual Frame  
 Part #2065

Dual Frame Cover  
 Part #2075

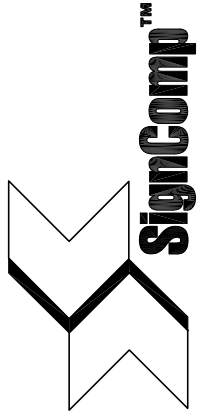


**CORNER SECTION DETAIL**

SCALE : 1" = 1"

NOTES:

1. Add 1" to size of cabinet (vertical or horizontal) when the size of the cabinet is the same as the nominal lamp length.
2. SignComp does not supply the 1/4" Joiner Bracket.



SC-10 for Flex Faces - Structural (Support)

Medium Body  
Part #2015

Dual Frame  
Part #2065

2 1/4" Dual Frame Cover  
Part #2075

CORNER KEY  
PART #5210

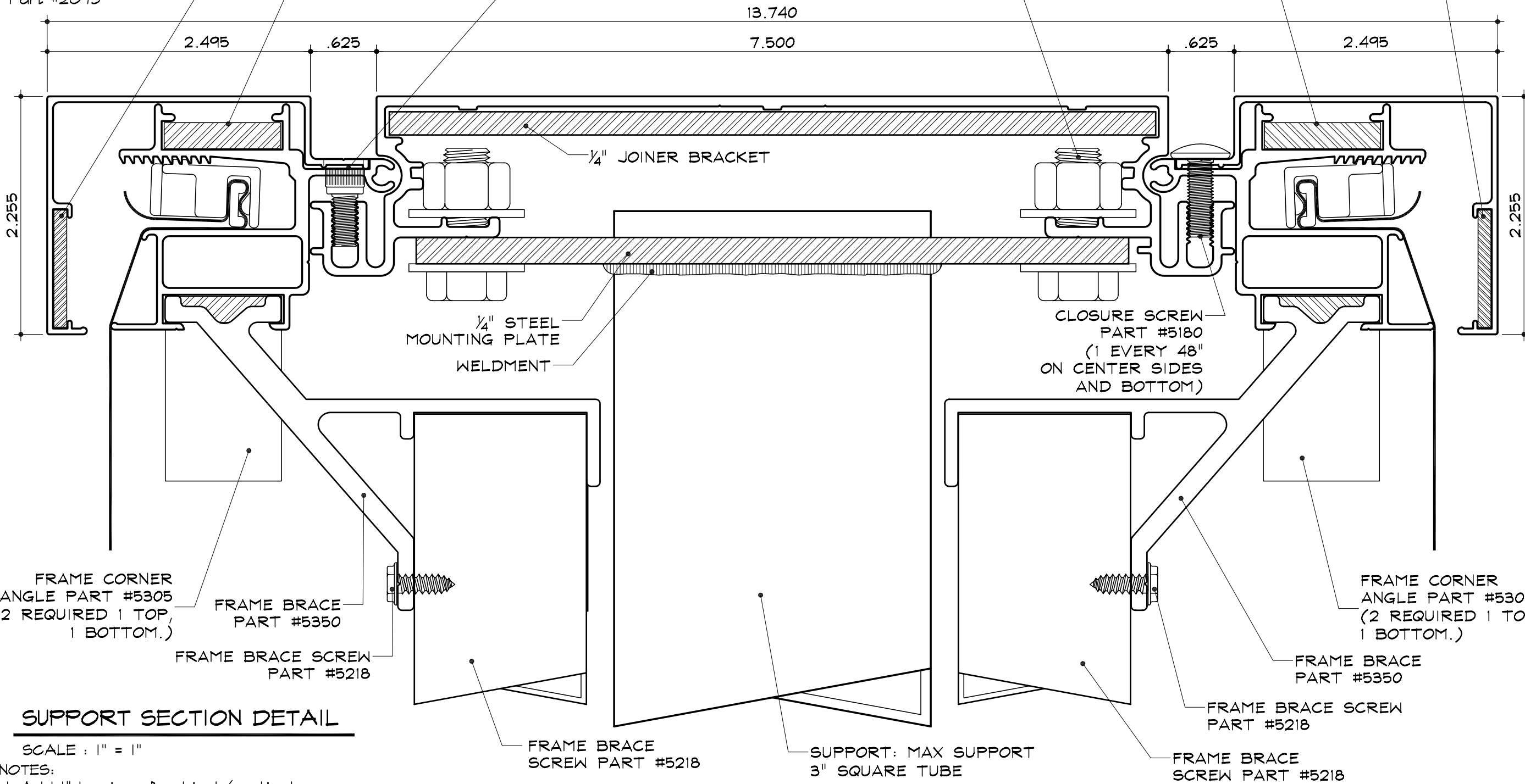
FRAME CORNER  
ANGLE PART #5305

HINGE SCREW  
PART #5170  
(1 EVERY 36"  
ON CENTER  
ACROSS TOP)

7/16"x1" STAINLESS STEEL  
STANDARD THREAD BOLT  
AND NUT.

FRAME CORNER  
ANGLE PART #5305

CORNER KEY  
PART #5210



FRAME CORNER  
ANGLE PART #5305  
(2 REQUIRED 1 TOP,  
1 BOTTOM.)

FRAME BRACE  
PART #5350

FRAME BRACE SCREW  
PART #5218

1/4" STEEL  
MOUNTING PLATE  
WELDMENT

1/4" JOINER BRACKET

CLOSURE SCREW  
PART #5180  
(1 EVERY 48"  
ON CENTER SIDES  
AND BOTTOM)

FRAME CORNER  
ANGLE PART #5305  
(2 REQUIRED 1 TOP,  
1 BOTTOM.)

FRAME BRACE  
PART #5350

FRAME BRACE SCREW  
PART #5218

FRAME BRACE  
SCREW PART #5218

SUPPORT: MAX SUPPORT  
3" SQUARE TUBE

FRAME BRACE  
SCREW PART #5218

**SUPPORT SECTION DETAIL**

SCALE : 1" = 1"

NOTES:

1. Add 1" to size of cabinet (vertical or horizontal) when the size of the cabinet is the same as the nominal lamp length.
2. SignComp does not supply the 1/4" Joiner Bracket, 1/4" Mounting Plate, 7/16" Mounting bolts or Support.
3. Max support size to be used 3" Square Tube.

**\*\*NOTE:\*\***  
FRAME BRACES AND SUPPORT TUBES  
SHOULD NOT BE PLACE IN FRONT OF  
SUPPORT TUBE OR PIPE.

