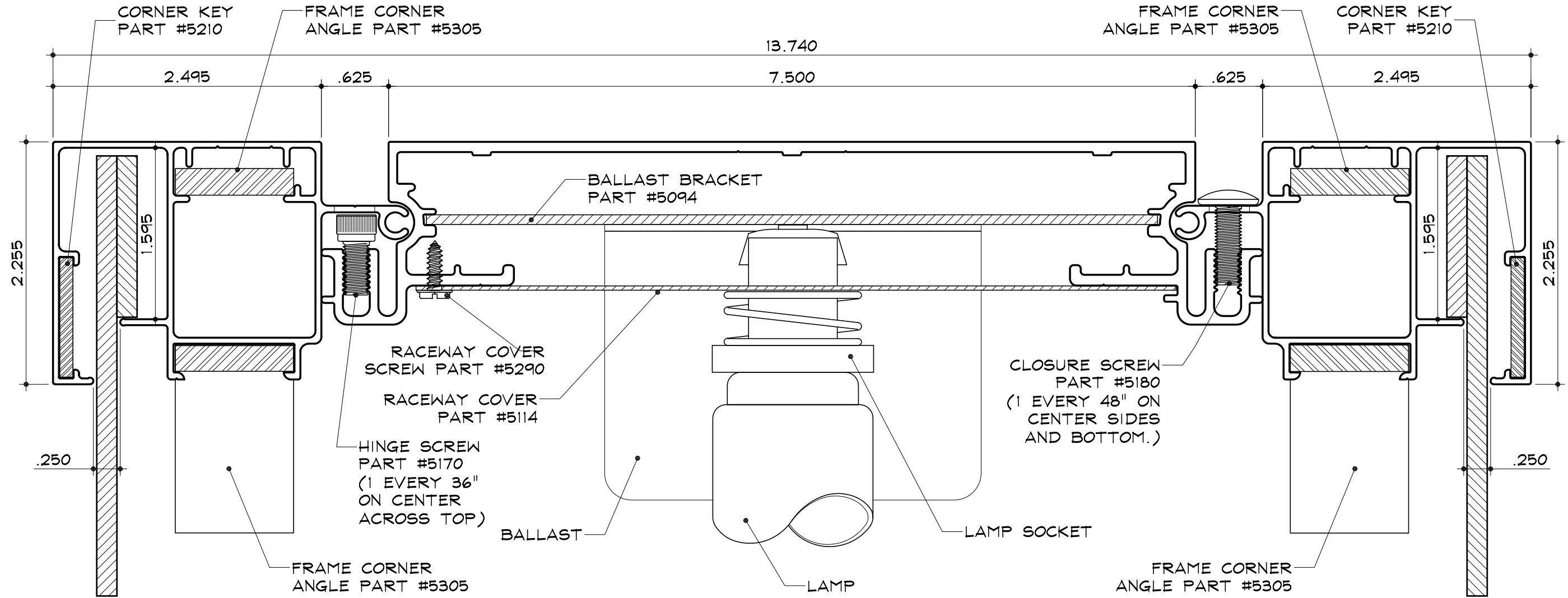


SC-8 for Rigid Faces - Electrical

Medium Body
 Part #2015

2 1/4" Retainer
 Part #2045

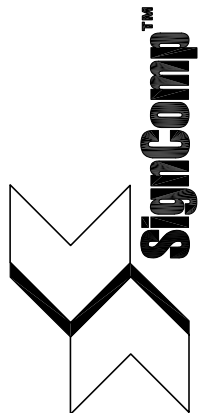


SECTION DETAIL

SCALE : 1" = 1"

NOTES:

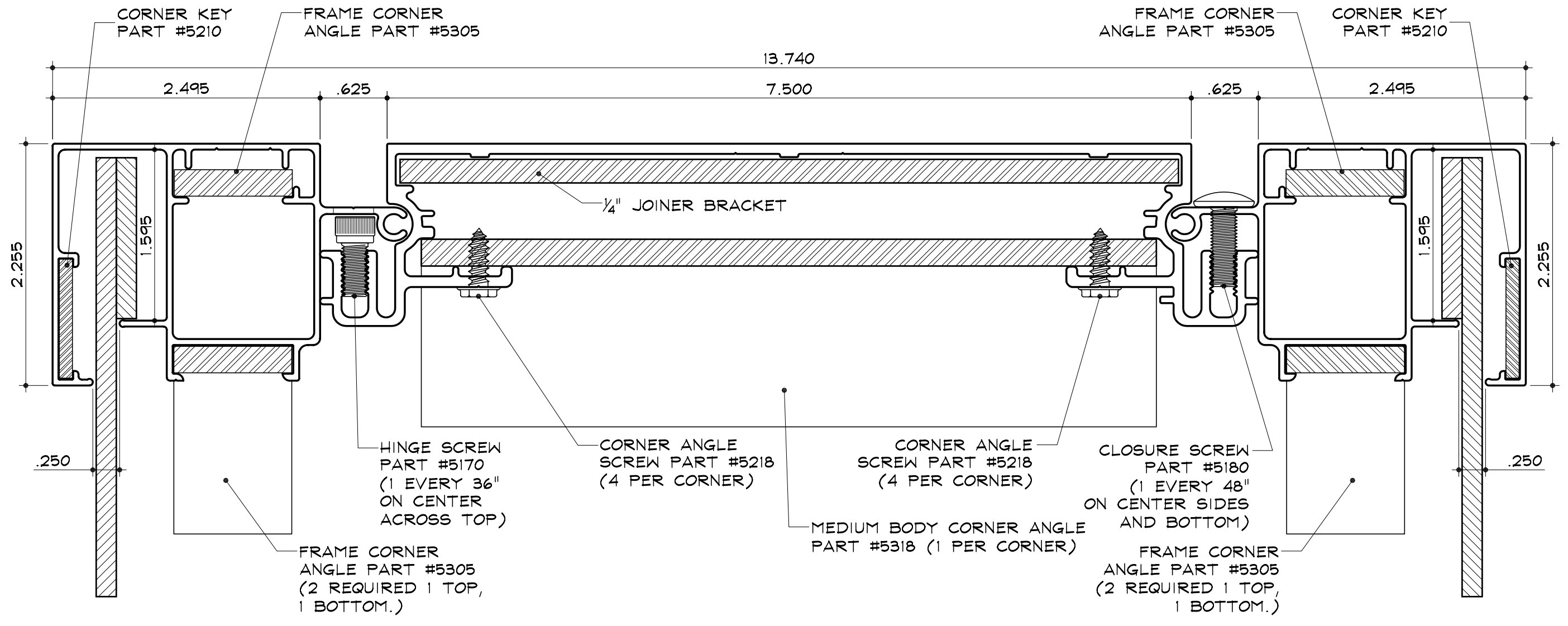
1. Add 1" to size of cabinet (vertical or horizontal) when the size of the cabinet is the same as the nominal lamp length.
2. SignComp does not supply the Ballast(s), Lamps, or Lamp Sockets.



SC-8 for Rigid Faces - Structural (Corner)

Medium Body
Part #2015

2 1/4" Retainer
Part #2045

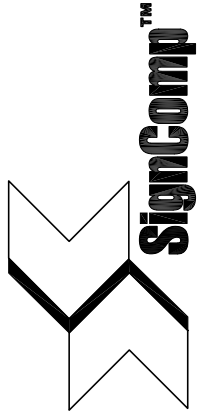


CORNER SECTION DETAIL

SCALE : 1" = 1"

NOTES:

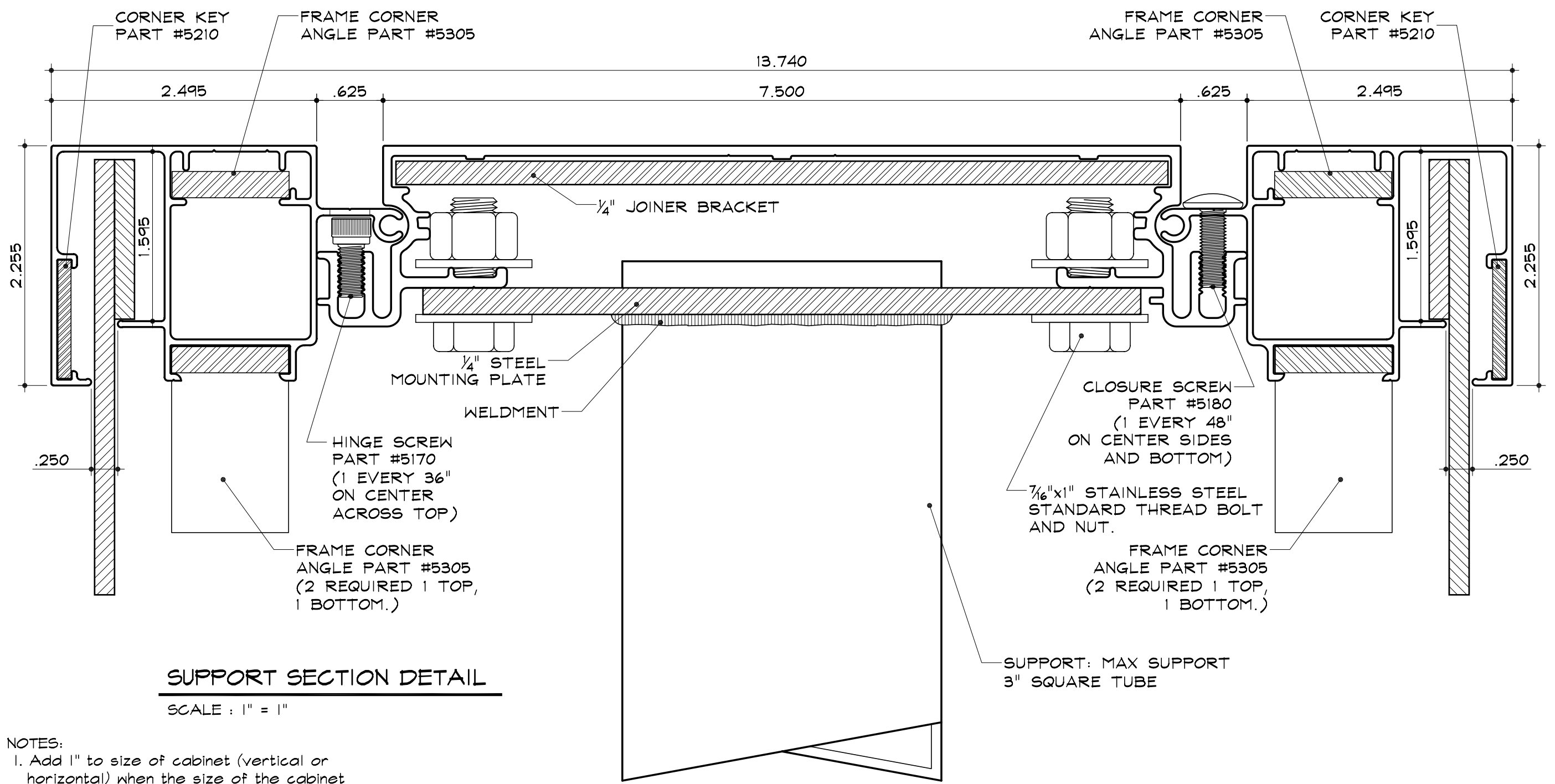
1. Add 1" to size of cabinet (vertical or horizontal) when the size of the cabinet is the same as the nominal lamp length.
2. SignComp does not supply the 1/4" Joiner Bracket.



SC-8 for Rigid Faces - Structural (Support)

Medium Body
Part #2015

2 1/4" Retainer
Part #2045

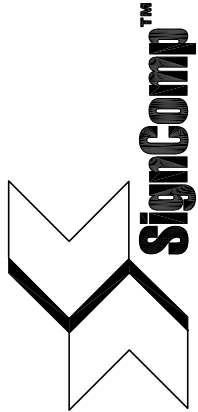


SUPPORT SECTION DETAIL

SCALE : 1" = 1"

NOTES:

1. Add 1" to size of cabinet (vertical or horizontal) when the size of the cabinet is the same as the nominal lamp length.
2. SignComp does not supply the 1/4" Joiner Bracket, 1/4" Mounting Plate, 7/16" Mounting bolts or Support.
3. Max support size to be used 3" Square Tube.

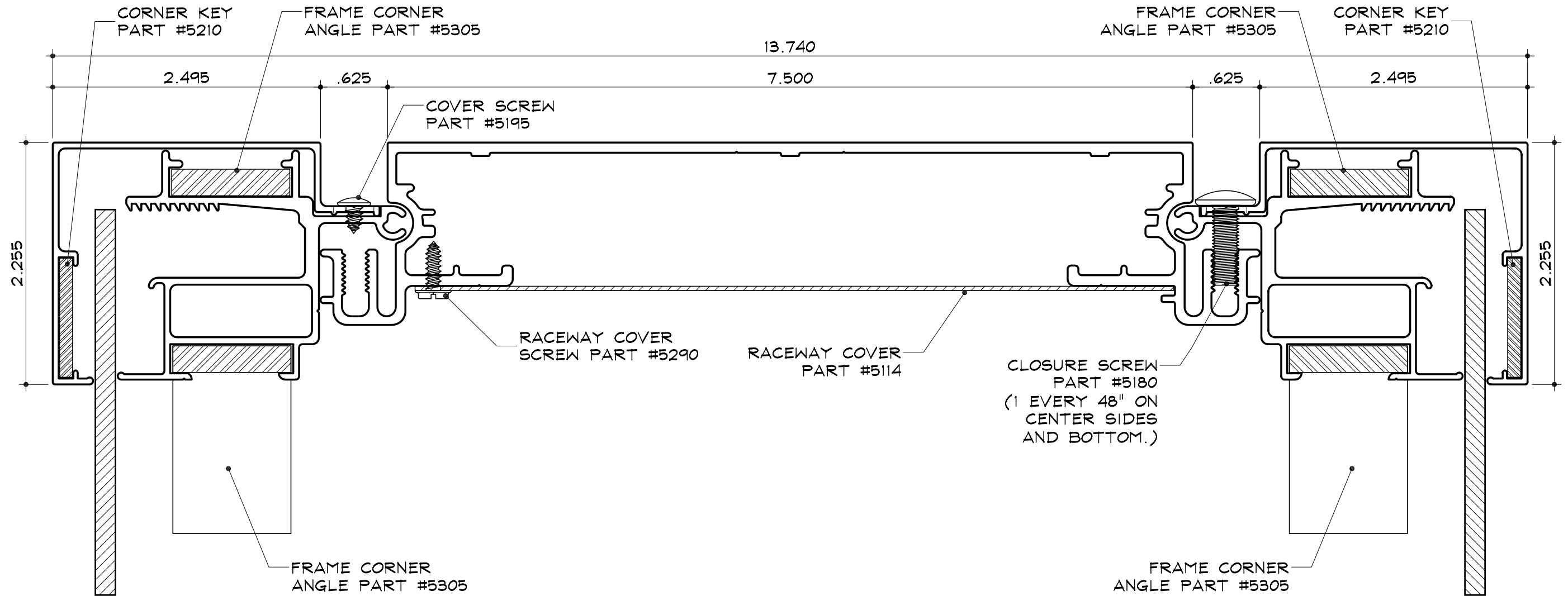


SC-8 for Rigid Faces - Side View

Medium Body
 Part #2015

Dual Frame
 Part #2065

2 1/4" Dual Frame Cover
 Part #2075



SECTION DETAIL

SCALE : 1" = 1"

NOTES:

1. Add 1" to size of cabinet (vertical or horizontal) when the size of the cabinet is the same as the nominal lamp length.