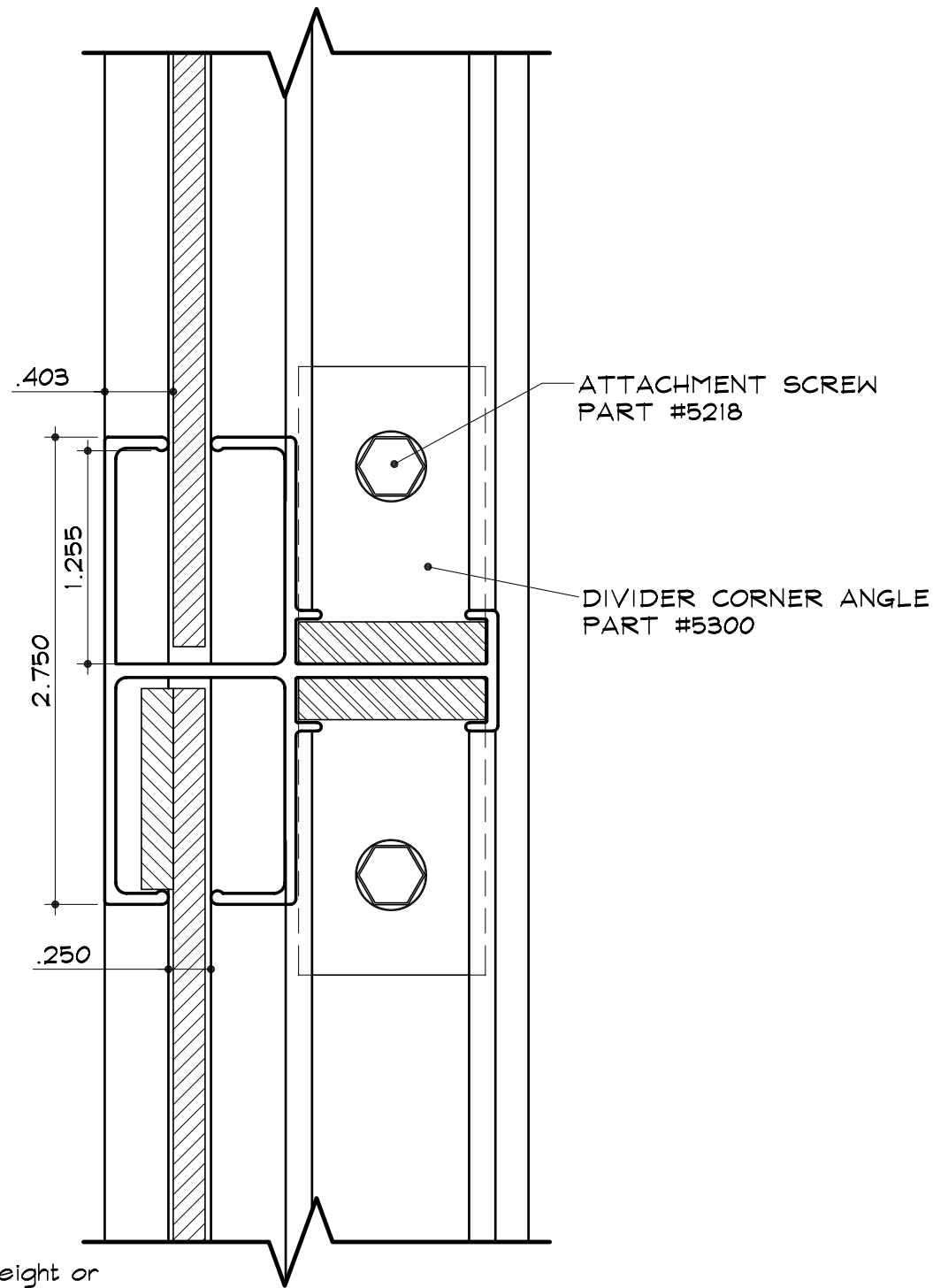


SC-40 for Rigid Faces.

2 3/4" Divider  
 Part #2128

2 1/4" Retainer  
 Part #2045

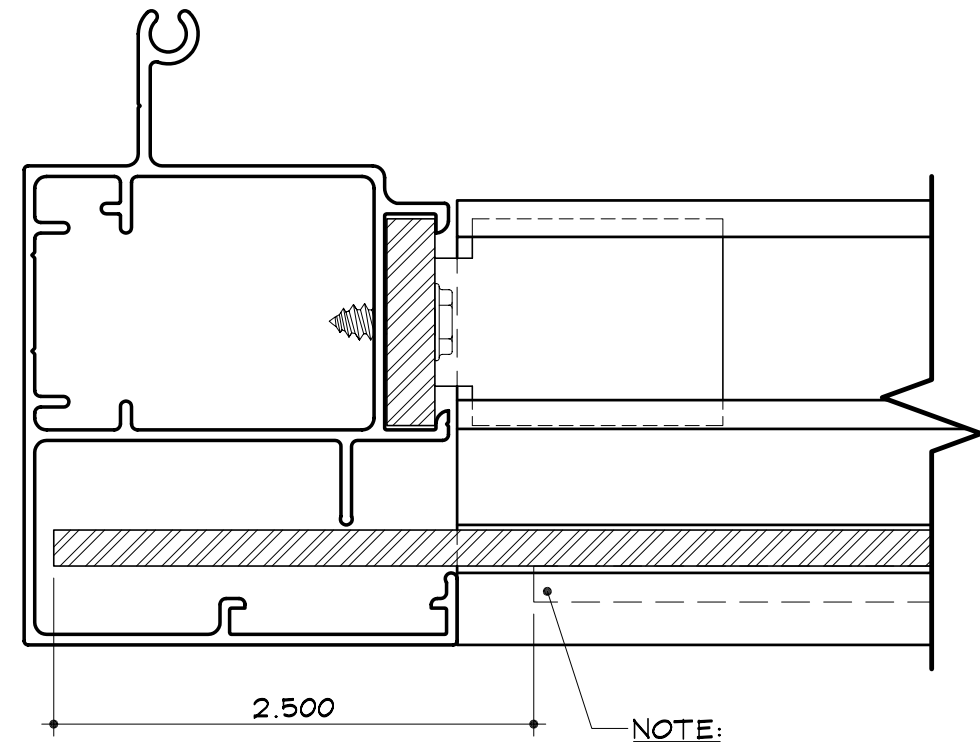


**SIDE VIEW**

SCALE : 1" = 1"

NOTES:

1. - Deduct 4 1/2" from overall height or width to get cut length of 2 3/4" Divider.
2. - When using 2 3/4" divider install the hanging bar on the front side of the face. Cut the hanging bar 5" shorter than the length of the face and place it in 2 1/2" in from the outside edge of the face.
3. - On one or both sides use the Dual Frame Part #2065 and the Dual Cover Part #2075 so at the cover can be removed and the faces can be slid in and out easily.
4. - for use with 2 1/4" Retainer (Part #2045) and 2" Retro Frame (Part #2112) ONLY.

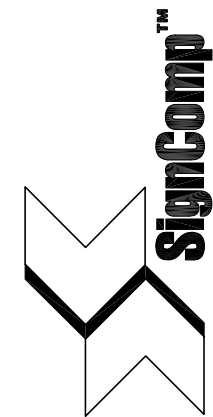


**TOP VIEW**

SCALE : 1" = 1"

NOTE:

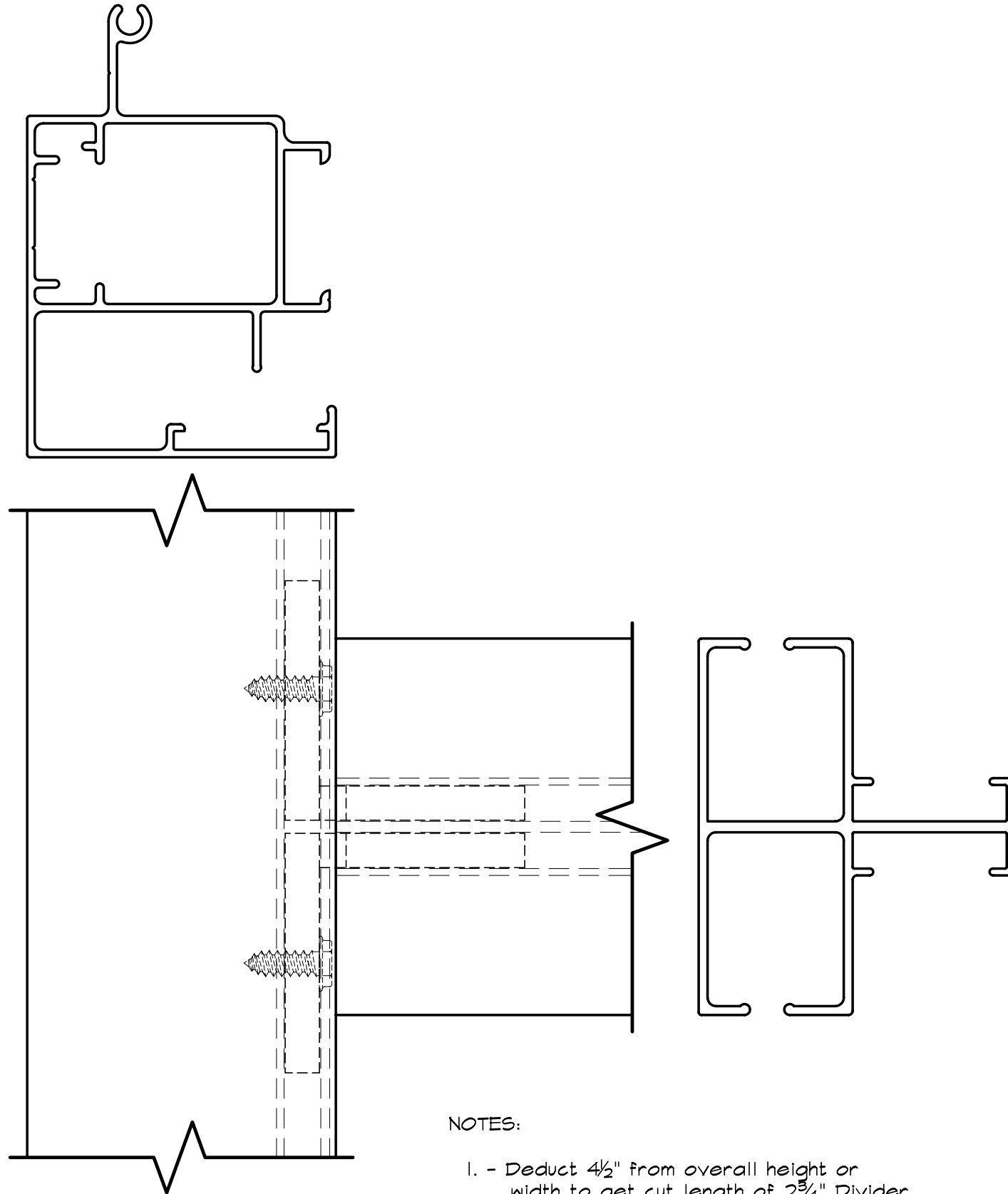
STOP HANGING BAR  
 2 1/2" FROM END OF  
 FACE AT EACH END.



SC-40 for Rigid Faces

2<sup>3</sup>/<sub>4</sub>" Divider  
Part #2128

2<sup>1</sup>/<sub>4</sub>" Retainer  
Part #2045

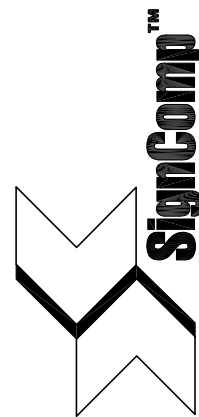


**FACE VIEW**

SCALE : 1" = 1"

NOTES:

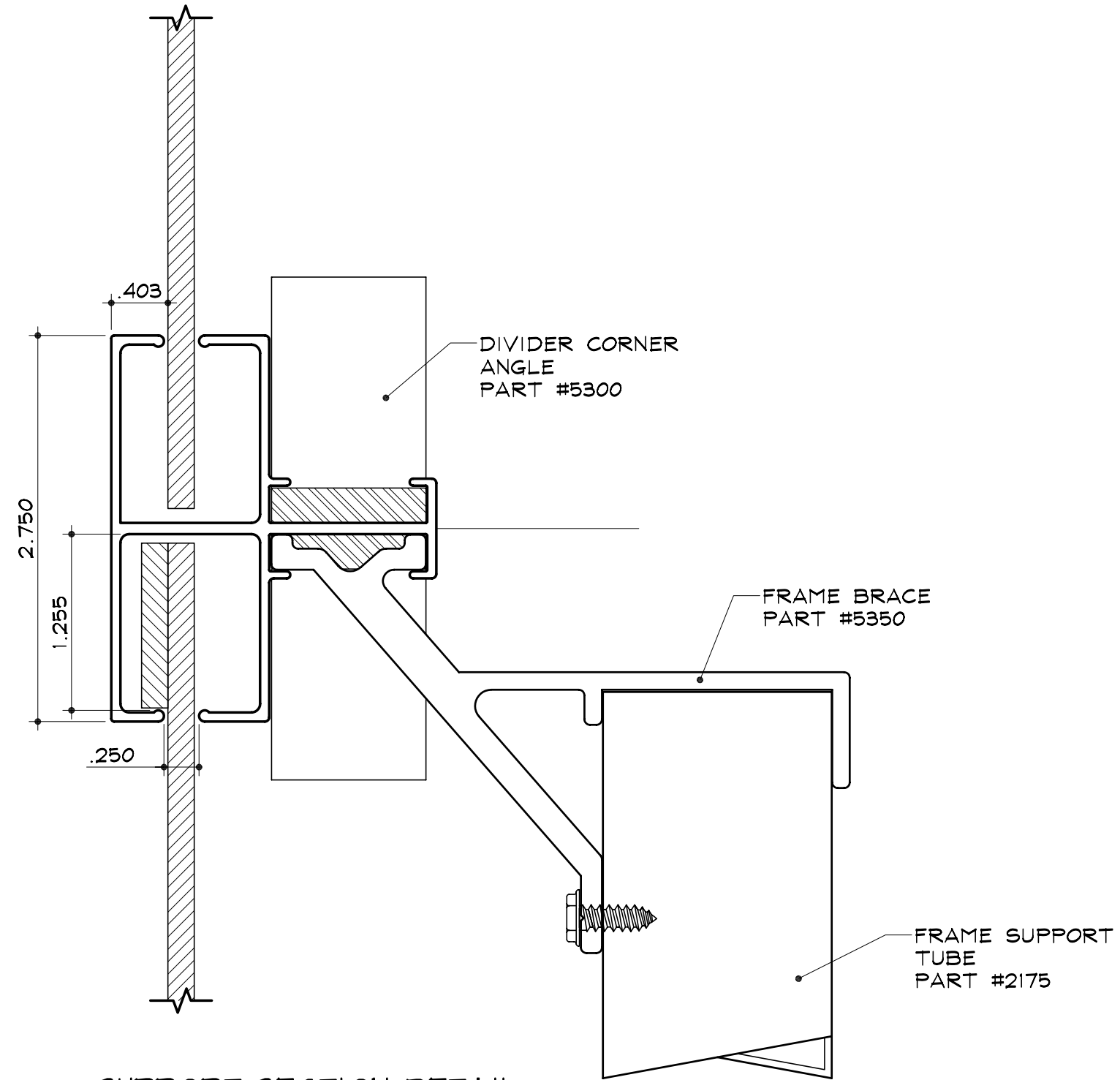
1. - Deduct 4<sup>1</sup>/<sub>2</sub>" from overall height or width to get cut length of 2<sup>3</sup>/<sub>4</sub>" Divider.



SC-40 for Rigid Faces

2 3/4" Divider  
Part #2128

2 1/4" Retainer  
Part #2045



**SUPPORT SECTION DETAIL**

SCALE : 1" = 1"

NOTES:

- 1. - Deduct 4 1/2" from overall height or width to get cut length of 2 3/4" Divider.