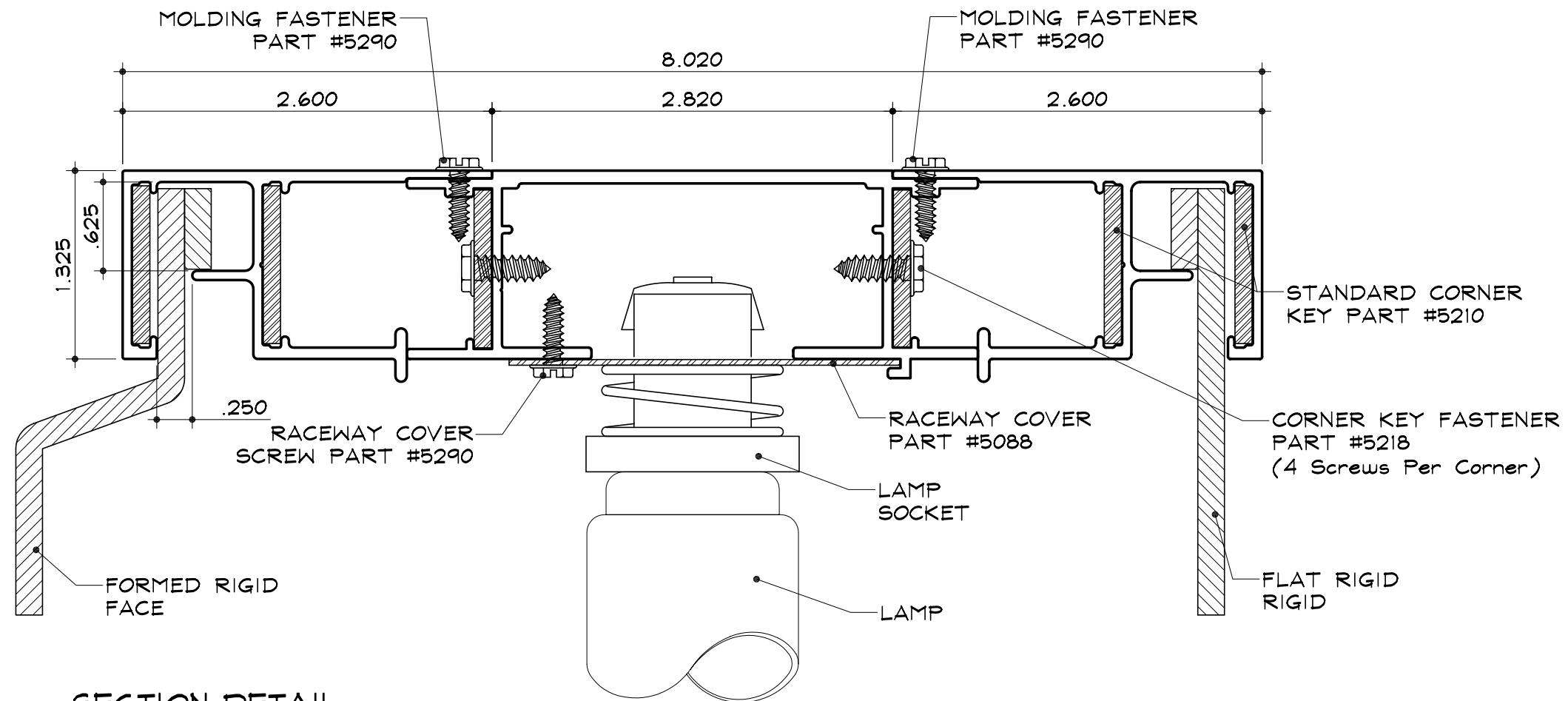


EC-4 for Rigid Faces - Electrical

Medium Double Filler  
Part #2036

Extended Econo Molding  
Part #2058



**SECTION DETAIL**

SCALE : 1" = 1"

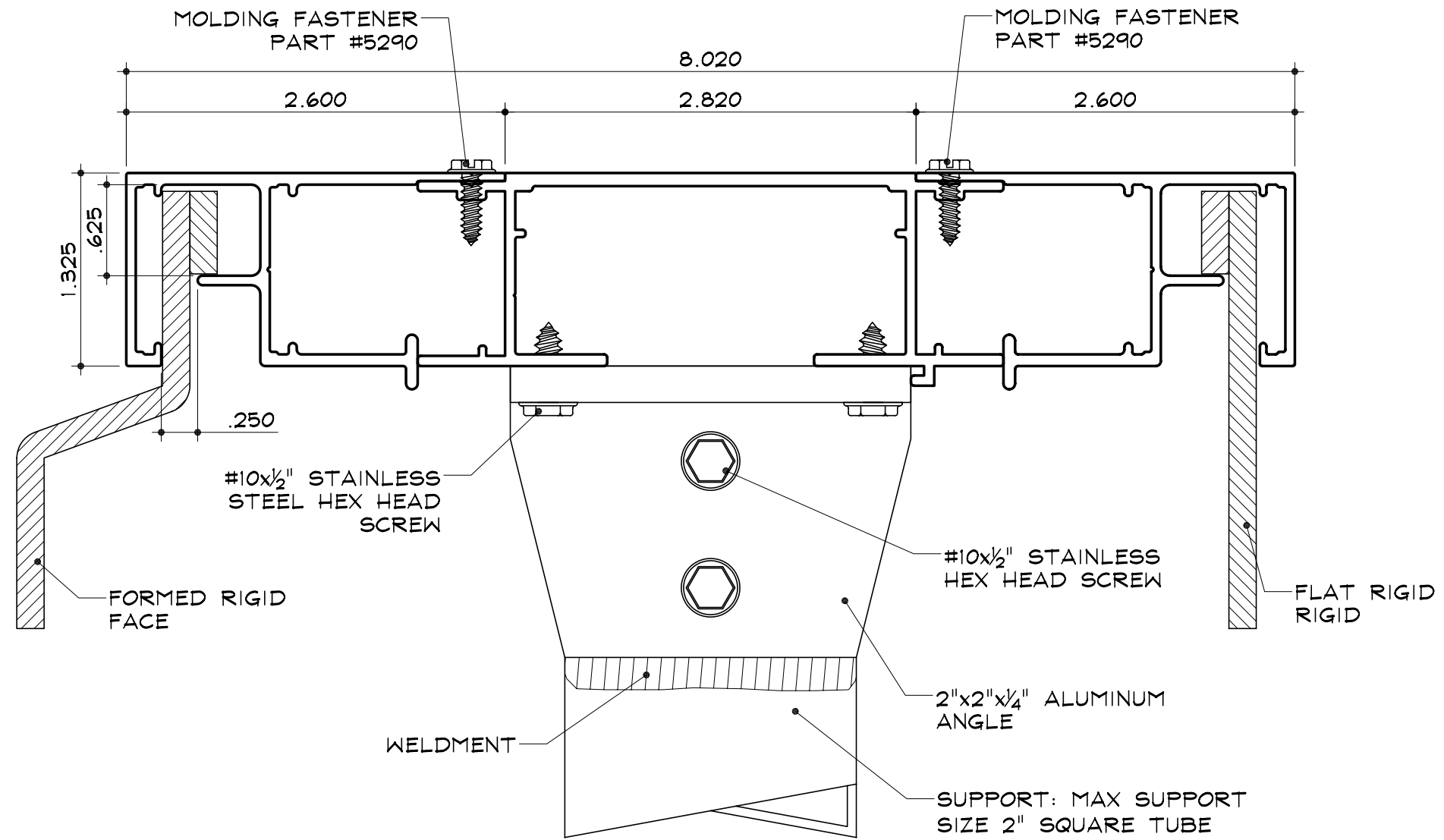
**NOTES:**

1. Add 1" to the size of the cabinet (vertical or horizontal) when the size of the cabinet is the same as the nominal lamp length.
2. SignComp does not supply the Ballast(s), Lamps, Lamp Sockets, Racenay Covers or Racenay Cover Screws.

EC-4 for Rigid Faces - Structural

Medium Double Filler  
 Part #2036

Extended Econo Molding  
 Part #2058

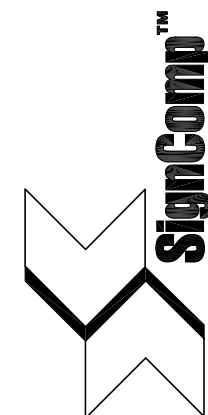


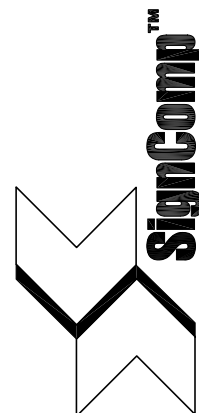
**SUPPORT SECTION DETAIL**

SCALE : 1" = 1"

**NOTES:**

1. Add 1" to the size of the cabinet (vertical or horizontal) when the size of the cabinet is the same as the nominal lamp length.
2. SignComp does not supply the Mounting Angles/Mounting plate, Mounting Screws, Support or Joiner Bracket.
3. Substituting or adding 1/4" plate stock for angles will increase the strength of the cabinet.
4. Max support size to be used 2" square tube.

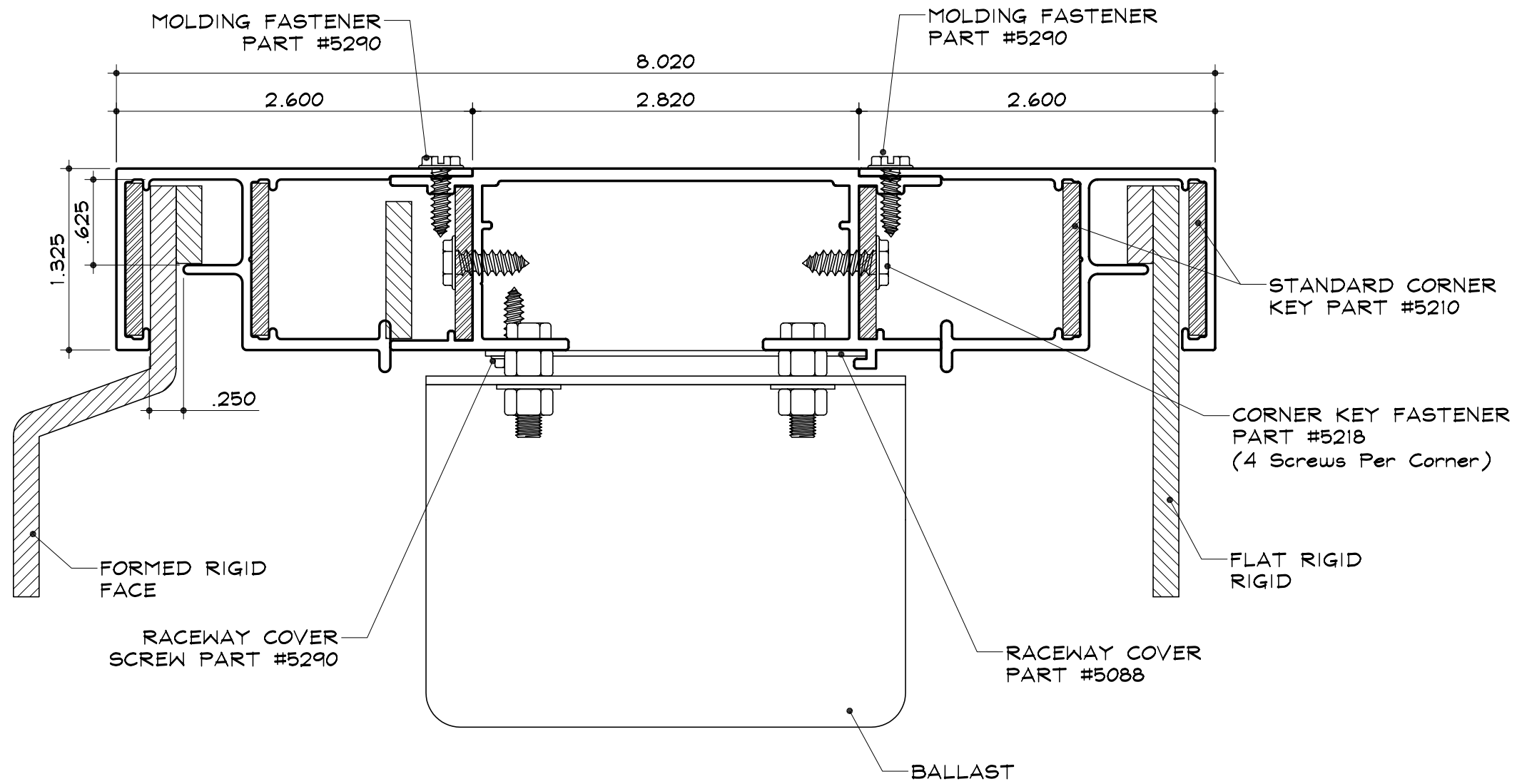




EC-4 for Rigid Faces - Side

Medium Double Filler  
Part #2036

Extended Econo Molding  
Part #2058



**SIDE SECTION DETAIL**

SCALE : 1" = 1"

NOTES:

1. Add 1" to the size of the cabinet (vertical or horizontal) when the size of the cabinet is the same as the nominal lamp length.
2. SignComp does not supply the Ballast(s), Lamps, Lamp Sockets, Racenay Covers or Racenay Cover Screws.