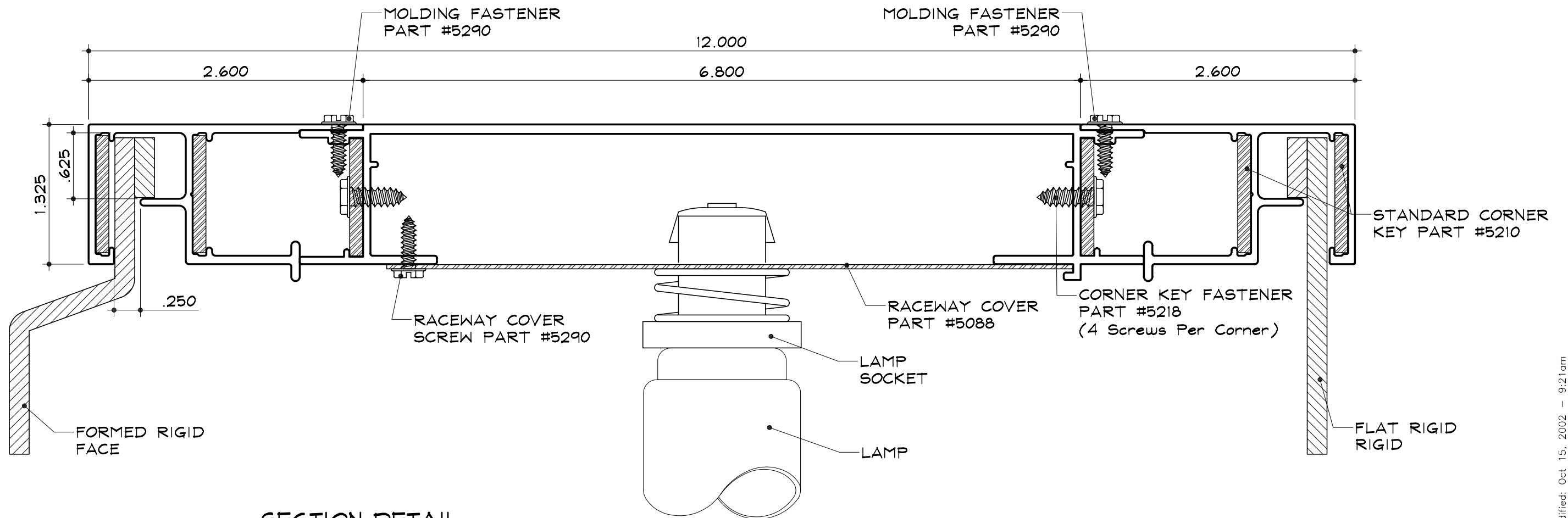


EC-2 for Rigid Faces - Electrical

Large Double Filler
Part #2032

Extended Econo Molding
Part #2058



SECTION DETAIL
SCALE : 1" = 1"

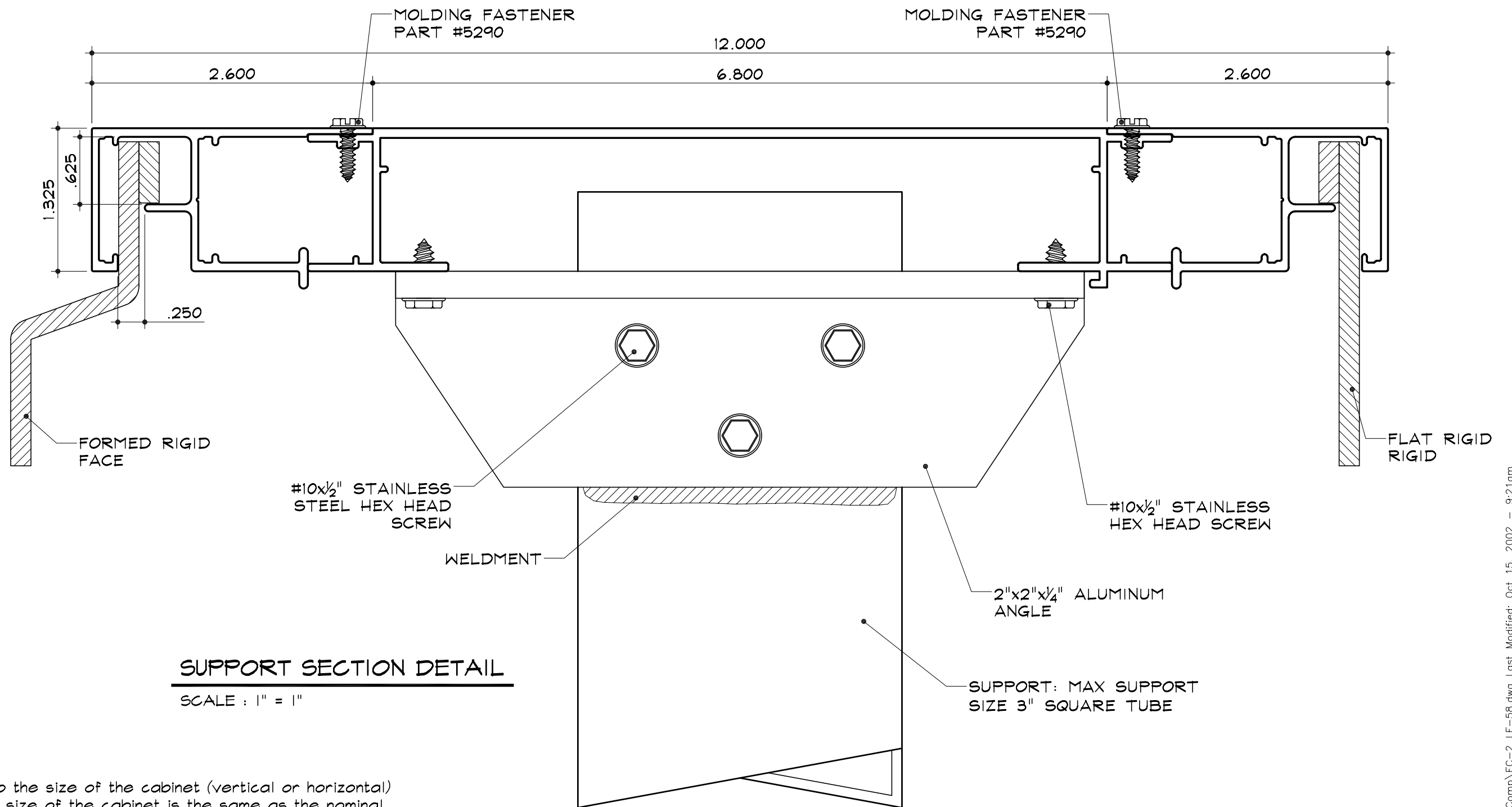
NOTES:

1. Add 1" to the size of the cabinet (vertical or horizontal) when the size of the cabinet is the same as the nominal lamp length.
2. SignComp does not supply the Ballast(s), Lamps, Racenay Covers, Racenay Cover Screws or Lamp Sockets.

EC-2 for Rigid Faces - Structural

Large Double Filler
 Part #2032

Extended Econo Molding
 Part #2058



SUPPORT SECTION DETAIL

SCALE : 1" = 1"

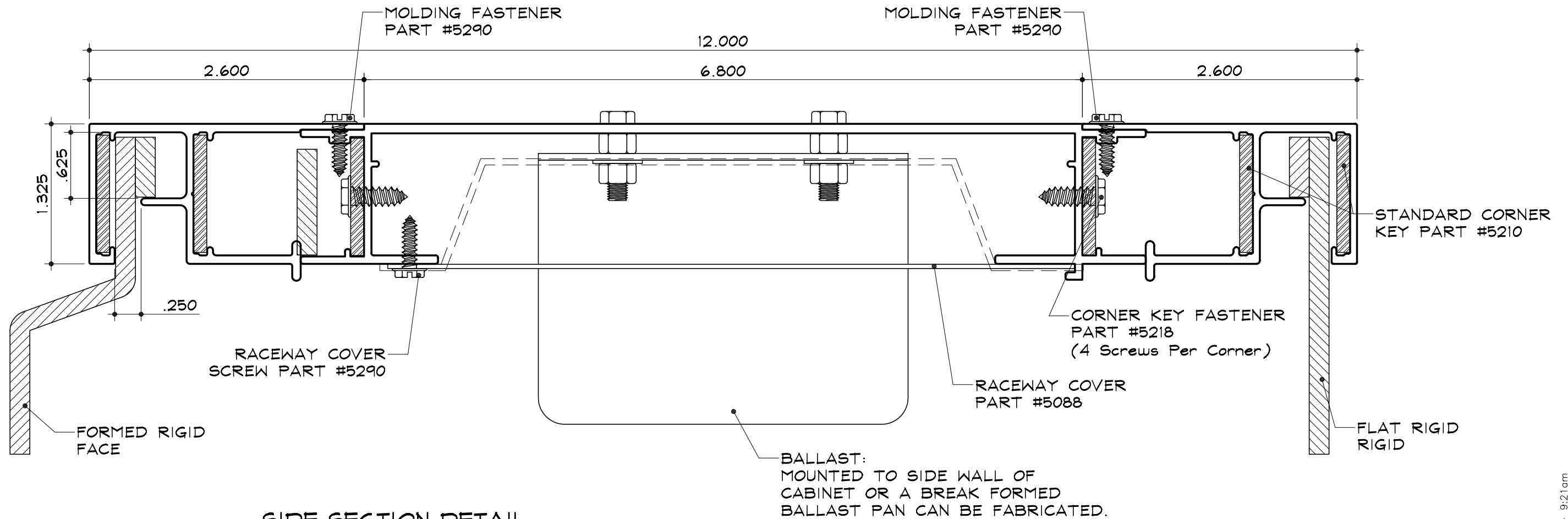
NOTES:

1. Add 1" to the size of the cabinet (vertical or horizontal) when the size of the cabinet is the same as the nominal lamp length.
2. SignComp does not supply the Mounting Angles/Mounting plate, Mounting Screws, Support or Joiner Bracket.
3. Substituting or adding 1/4" plate stock for angles will increase the strength of the cabinet.
4. Max support size to be used 3" square tube.

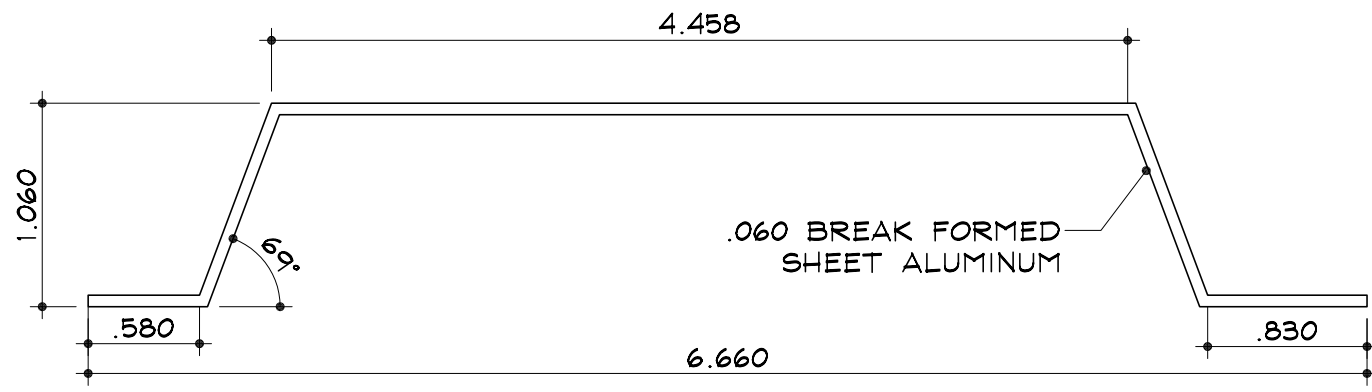
EC-2 for Rigid Faces - Side

Large Double Filler
 Part #2032

Extended Econo Molding
 Part #2058



SIDE SECTION DETAIL
 SCALE : 1" = 1"



BALLAST PAN DETAIL
 SCALE : 1" = 1"

NOTES:

1. Add 1" to the size of the cabinet (vertical or horizontal) when the size of the cabinet is the same as the nominal lamp length.
2. SignComp does not supply the Ballast(s), Lamps, Lamp Sockets, Raceway Covers, Raceway Cover Screws or Ballast Pans.