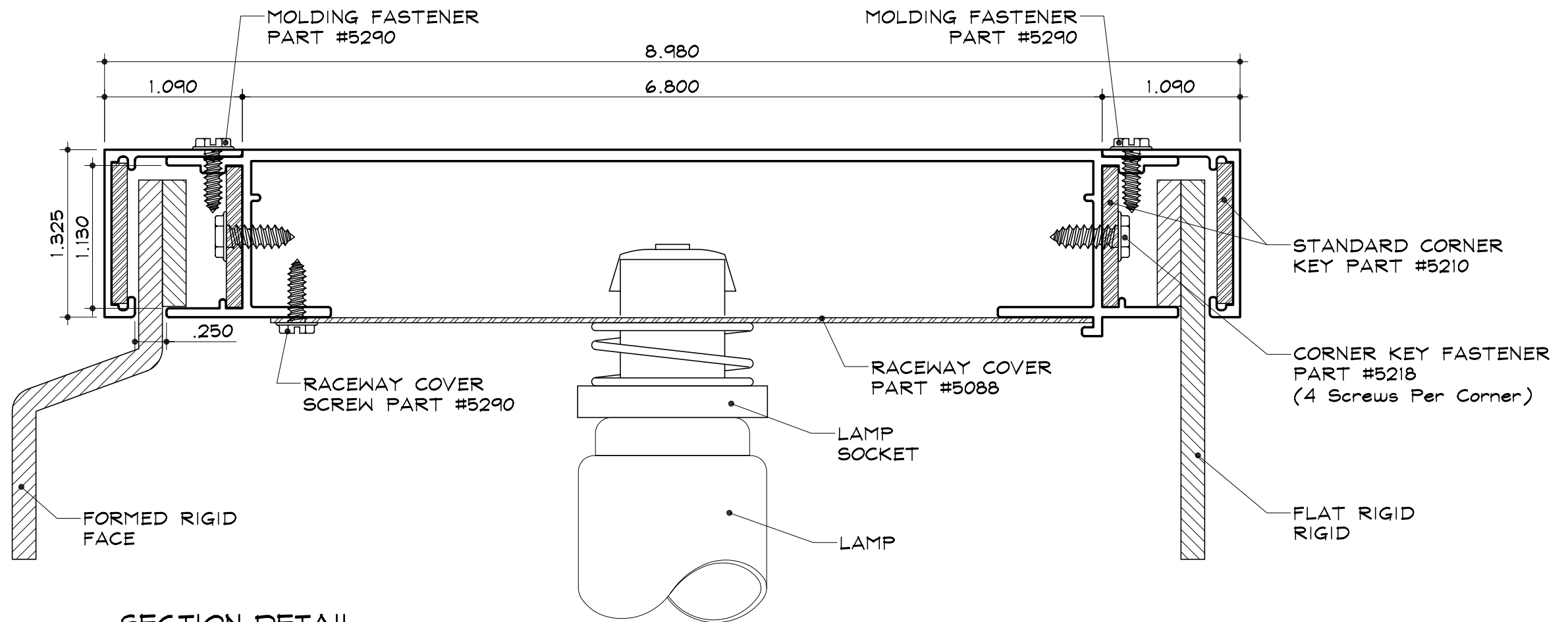


EC-1 for Rigid Faces - Electrical

Large Double Filler
Part #2032

Econo Molding
Part #2056



SECTION DETAIL

SCALE : 1" = 1"

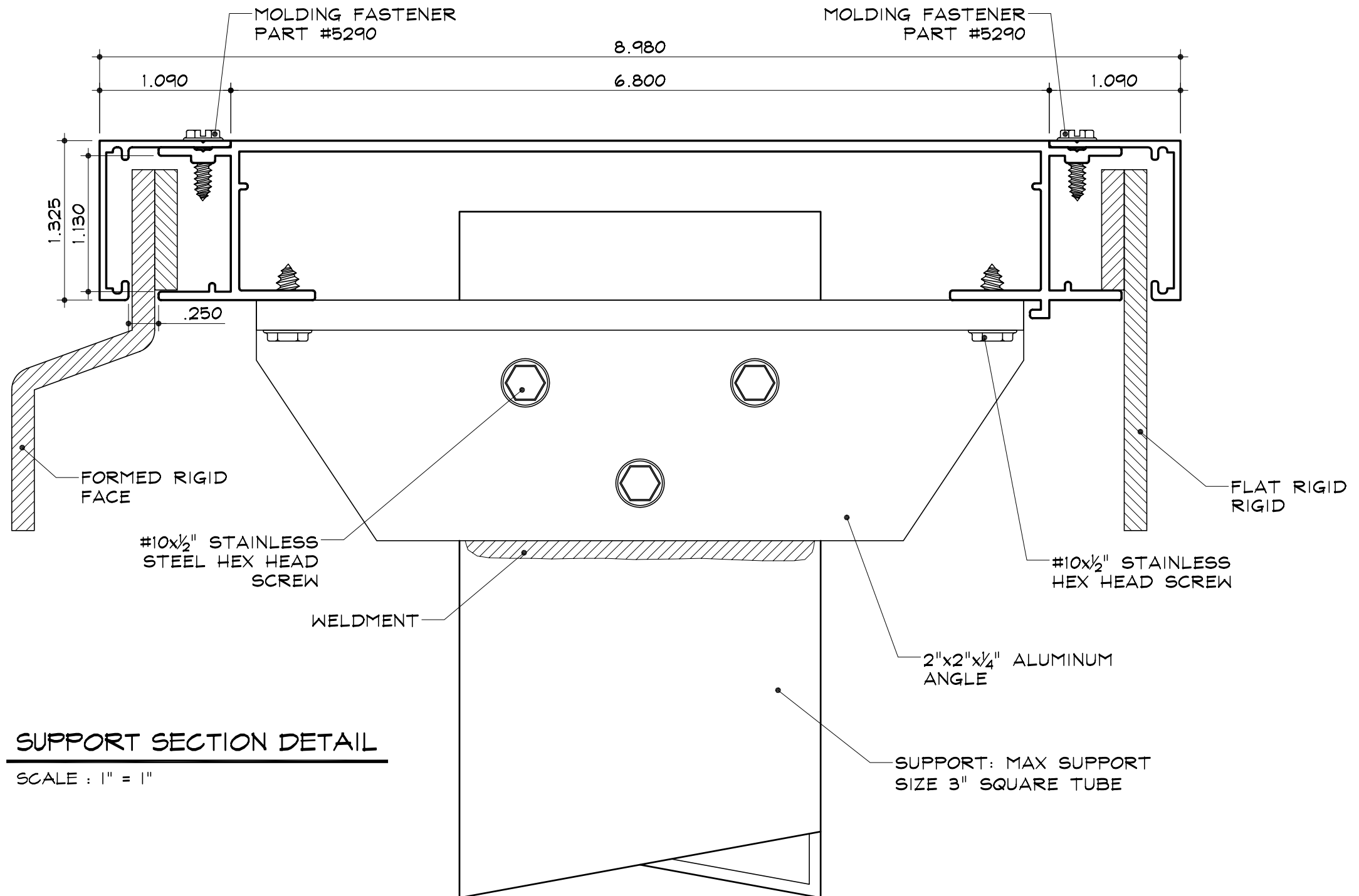
NOTES:

1. Add 1" to the size of the cabinet (vertical or horizontal) when the size of the cabinet is the same as the nominal lamp length.
2. SignComp does not supply the Ballast(s), Lamps, Lamp Sockets, Raceway Covers or Raceway Cover Screws.

EC-1 for Rigid Faces - Structural

Large Double Filler
 Part #2032

Econo Molding
 Part #2056



SUPPORT SECTION DETAIL

SCALE : 1" = 1"

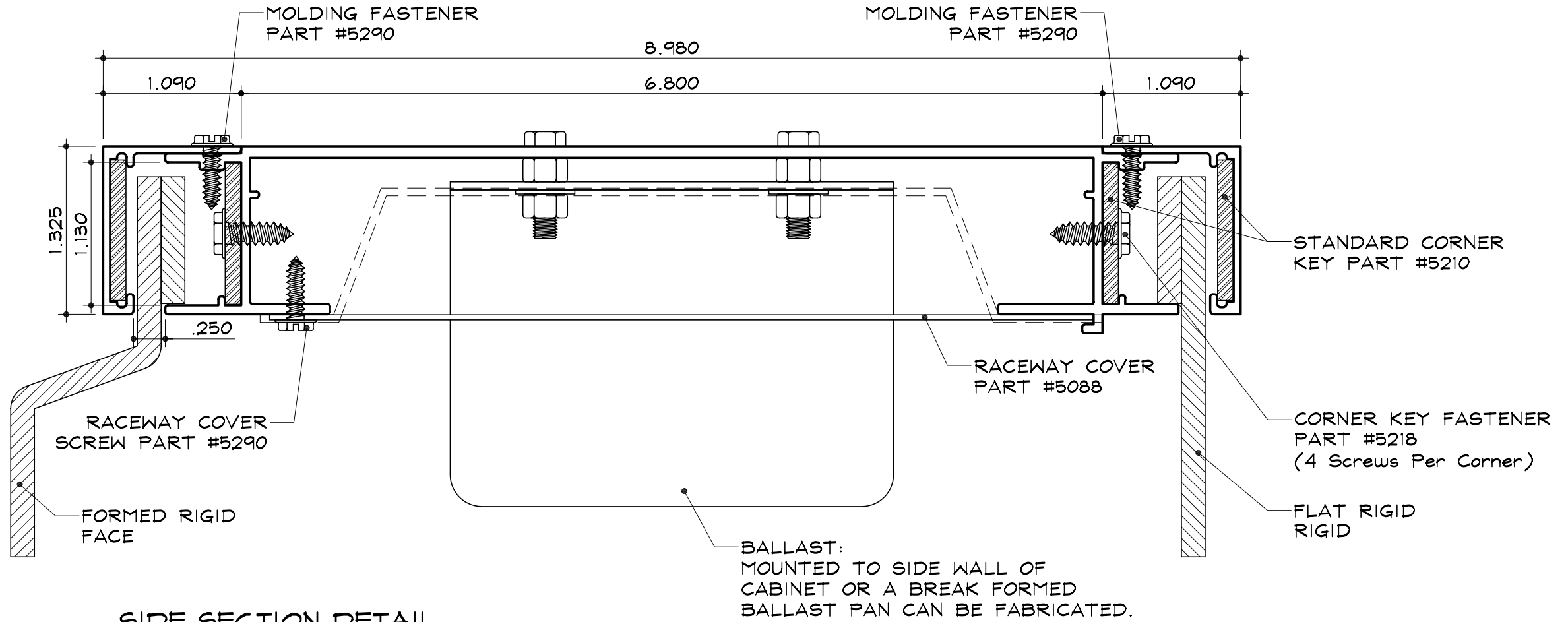
NOTES:

1. Add 1" to the size of the cabinet (vertical or horizontal) when the size of the cabinet is the same as the nominal lamp length.
2. SignComp does not supply the Mounting Angles/Mounting plate, Mounting Screws, Support or Joiner Bracket.
3. Substituting or adding 1/4" plate stock for angles will increase the strength of the cabinet.
4. Max support size to be used 3" square tube.

EC-1 for Rigid Faces - Side

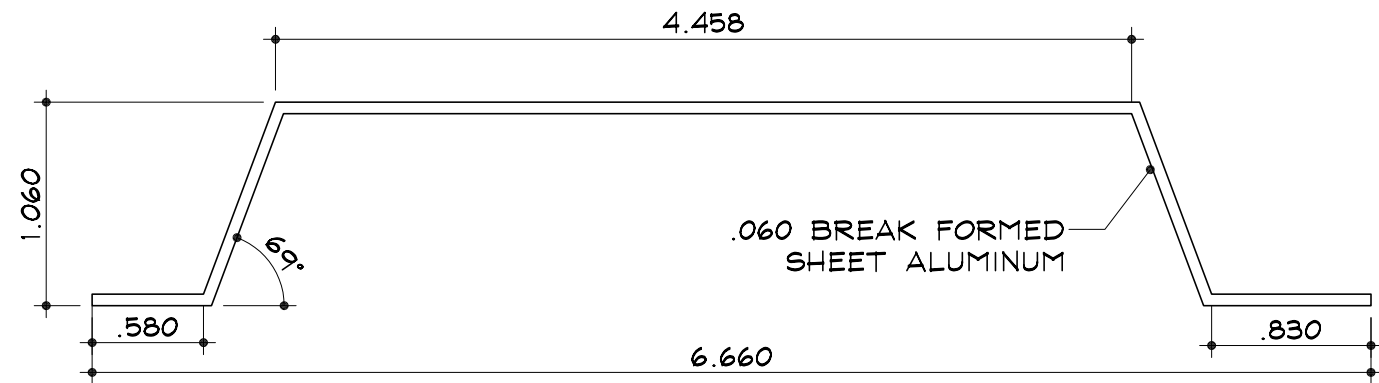
Large Double Filler
 Part #2032

Econo Molding
 Part #2056



SIDE SECTION DETAIL

SCALE : 1" = 1"



BALLAST PAN DETAIL

SCALE : 1" = 1"

NOTES:

1. Add 1" to the size of the cabinet (vertical or horizontal) when the size of the cabinet is the same as the nominal lamp length.
2. SignComp does not supply the Ballast(s), Lamps, Lamp Sockets, Ballast Pans, Raceway Covers or Raceway Cover Screws.